



Technology in connectors

Designed to perform

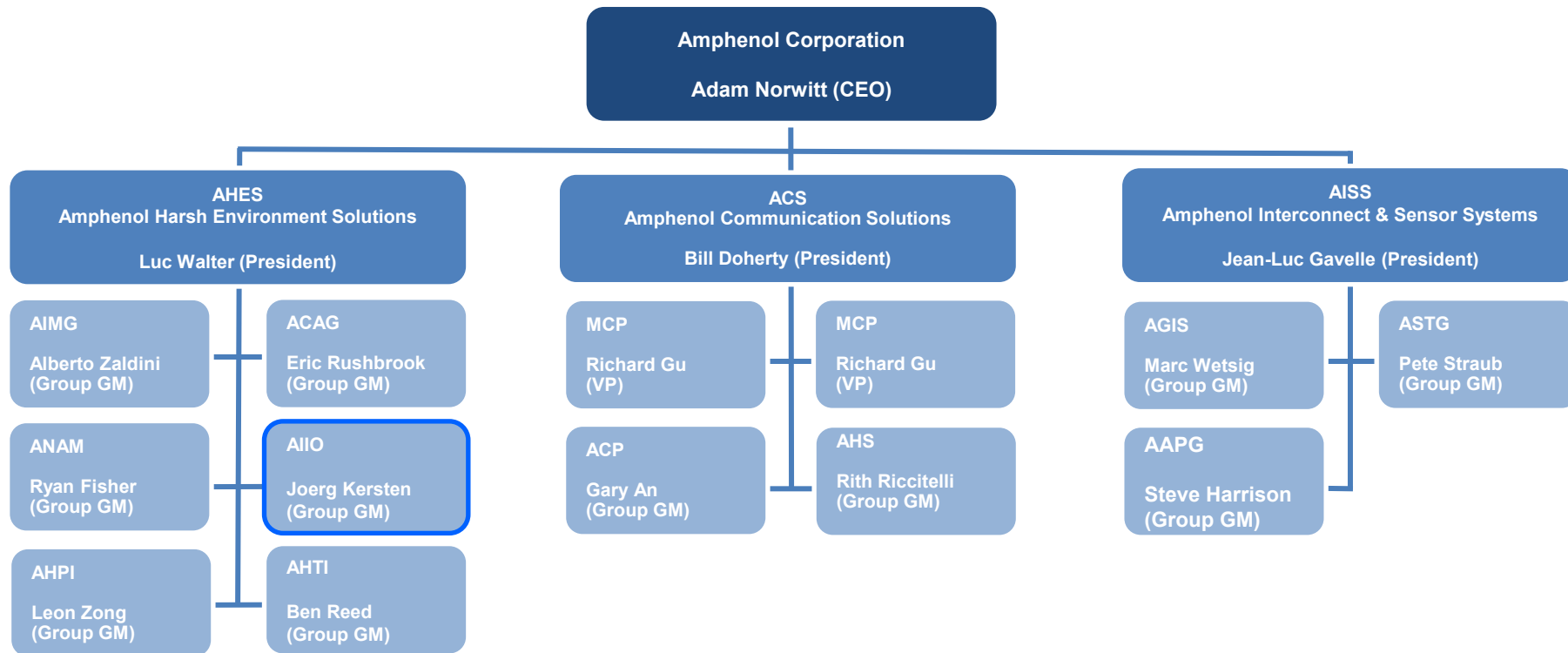
WELCOME



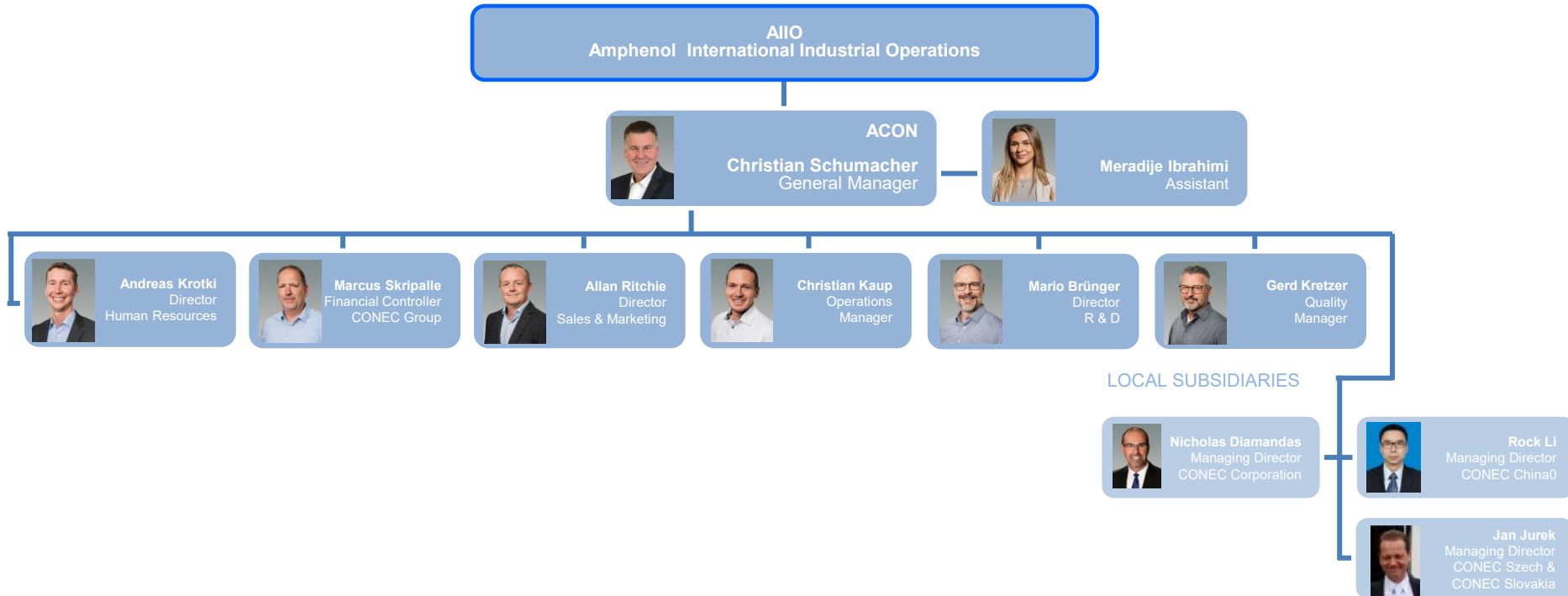
CONEC GROUP

CONEC Elektronische Bauelemente GmbH, Lippstadt, Deutschland

Amphenol Corporation Division Structure

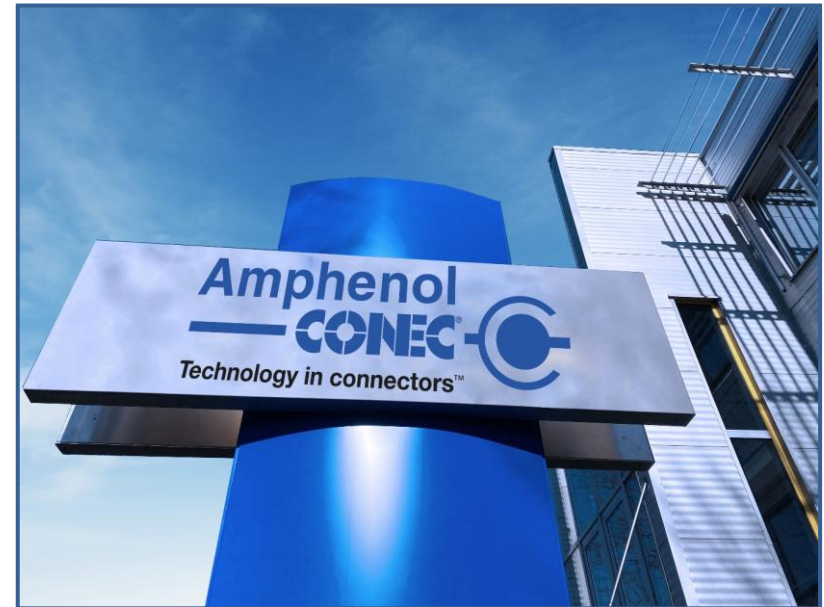


CONEC Organization



The group CONEC at a glance

- 1978 Foundation of CONEC Elektronische Bauelemente GmbH
- Owner managed Company until 2019
- Since June 2019 part of the Amphenol Group
- Managing director Christian Schumacher
- Managing director Richard Adam Norwitt
- Managing director Craig Anthony Lampo
- Headquarters with research and development center in Germany
- Production centres in Germany, Czech Republic, Slovakia, Canada and Mexico
- Subsidiaries in Canada, China and Czech Republic
- More than 1,100 employees worldwide



History



- 1978 - Founded in Lippstadt/Hörste
- 1980 - Start of production DIN EN 60603
- 1985 - Start of production D-SUB filter connectors
- 1990 - Establishment of CONEC Corporation, Canada
- 1996 - Establishment of CONEC s.r.o., Czech Republic
- 2005 - Development circular connectors
- 2006 - Establishment of CONEC (Shanghai) Int. Trading Co. Ltd., China
- 2011 - Expansion production area in Lippstadt by 2,500 m²
- 2017 - Expansion production and office area in Lippstadt by 3,000 m²
- 2019 - CONEC becomes part of the Amphenol Group
- 2021 - Opening of the production site in Giraltovce, Slovakia
- 2023 - Opening of the production site in Nogales, Mexico

Headquarters Lippstadt

Global Research & Development Department

- Hybrid connectors
- Sensor Actor Line circular connectors
- Connectors for agricultural and construction machines
- I/O connectors
- Customized products



A Company View

Competence
in development and manufacturing



Synthetic injection molding plant



Operating resources



Turning machines



R&D & Sales

A Company View

Production depth

- In-house tool making
- In-house turning shop
- In-house plastic injection molding shop

Equipment

- Wire eroding machinery
- vertical eroding machines
- CNC-Milling machines
- Vertical injection molding machinery



Production sites Czech Republic & Slovakia



CONEC
Czech Republic



CONEC
Slovakia



North America

Proximity to customers

- Series production
- Customized products for North America
- Support and service of local market

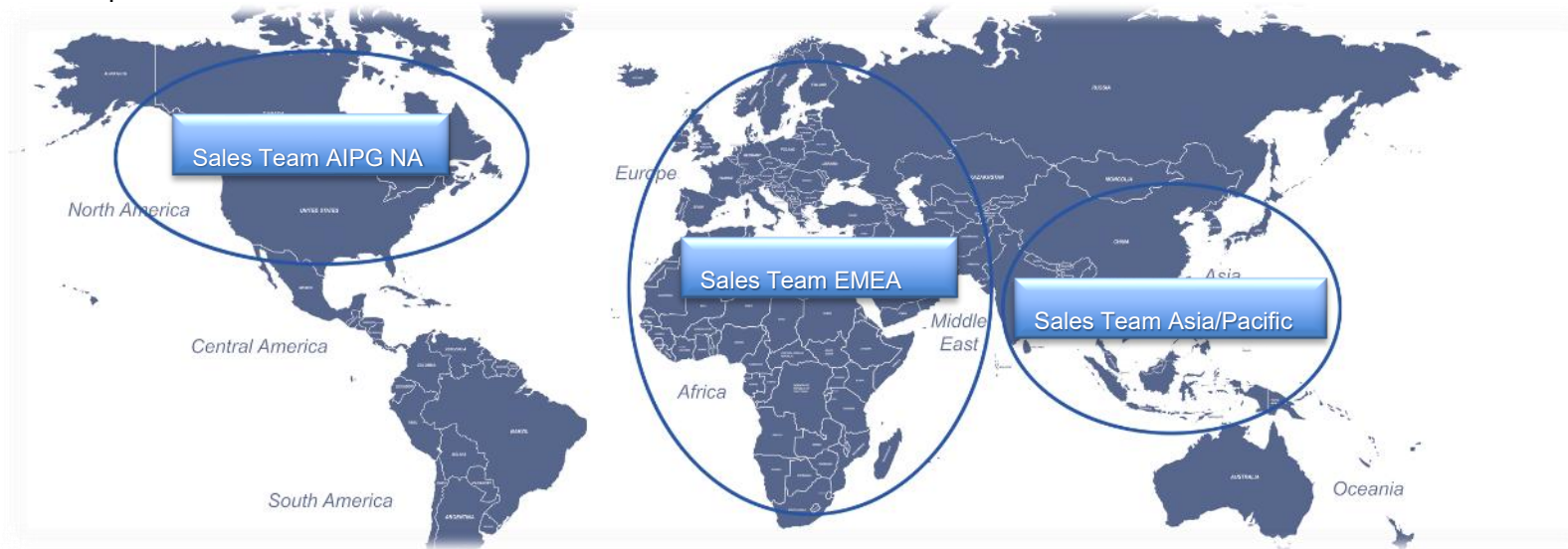


CONEC Corporation, Canada



Production site Nogales, Mexico

Sales network EMEA | USA | Asia

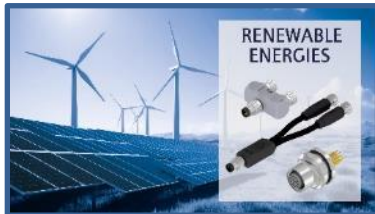
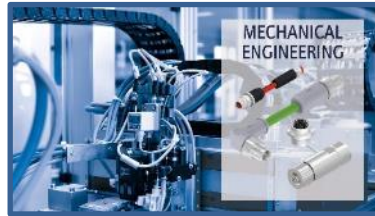


Function	Sales USA/Kanada	Sales EMEA	Sales Asia/Pacific
Sales	16	72	5
BDM	4	11	3
Distribution	7	2	5

Global and national distribution partners



Applications using CONEC connectors



Circular Connectors



BENEFITS

- Connectors overmolded
- Connectors field attachable
- Sockets
- Panel plugs
- High Temperature connectors
- BUS-Systems
- Power Connectors
- Junction systems
- Enclosure technology
- Accessories
- Compact design of field attachable connectors
- High variety of device connectors
- Quick locking variants
- Customer-specific assemblies

CONEC Hybrid Connectors



BENEFITS

- Size: B12, B17, B23, B40
 - Connectors overmolded
 - Connectors field attachable
 - Receptacles
- Quick assembly of bayonet lock system
 - Transfer of data and power through one connector
 - Different sizes for different performance classes of drives

IO Systems junction boxes



BENEFITS

- Junction boxes active
 - Independent
 - Master
 - Slave
 - Junction boxes passive
 - M8
 - M12
 - Enclosure technology
- Degree of protection IP67
 - Compact design
 - Communication protocols
 - PROFINET
 - ETHERCAT
 - IO-Link
 - Design and production of Customer-specific distribution box housings

Heavy Equipment Connectors



BENEFITS

- AT/DT connectors
- ATM connectors
- Superseal connectors
- ISOBUS connectors
- Junction system size S,M, L
- M12x1 connectors with colored plastic nut/screw
- CPC connectors
- HDSCS connectors
- Degree of protection IP67/IP69K
- Integrated LED and surge protection (DT)
- Modular junction system for almost all requirements

D-SUB Connectors



BENEFITS

- D-SUB
- D-SUB High Density
- D-SUB Combination
- D-SUB Filter
- D-SUB Filter Combination
- Hoods & Accessories
- CONEC SnapLock
- Assembly tools
- Precision machined contacts
- Quick assembly of the SnapLock system
- Large variety of D-SUB connectors
 - Combination Layouts
 - Hoods
 - Mounting options

IP67 D-SUB Connectors



BENEFITS

- IP67 D-SUB
- IP67 D-SUB High Density
- IP67 D-SUB CONEC Solid Body
- IP67 D-SUB CONEC SlimCon
- IP67 Combination D-SUB
- IP67 Filter D-SUB
- IP67 Hoods & Accessories
- Assembly tools
- Smallest IP67 D-SUB connector (CONEC SlimCon)
- Resistant zinc die-cast shell (Solid Body and SlimCon series)
- Compact design of IP67 hoods

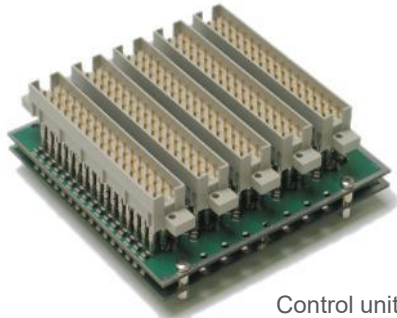
IP67 RJ45 / USB / Mini USB / Fiber Optic / Power Bayonet



BENEFITS

- RJ45
- IP67 RJ45
- IP67 USB / Mini USB
- IP67 Fiber Optic LC Duplex
- IP67 Power Bayonet
- Fiber Optic Adapters
- Accessories
- Quick assembly of bayonet lock system
- 1 housing, 3 different connectors
 - RJ45
 - USB
 - Fiber Optic

Application examples & customized connectors



Control unit for railcar



Copyright: VDS RAIL S.R.L



Customized hood
 Aviation



Copyright: men



Female connector M12x1
 special screw connection

References

Thank you for your kind attention!



SUCCESS

Even with many small wing beats
great things can be achieved.

Author unknown