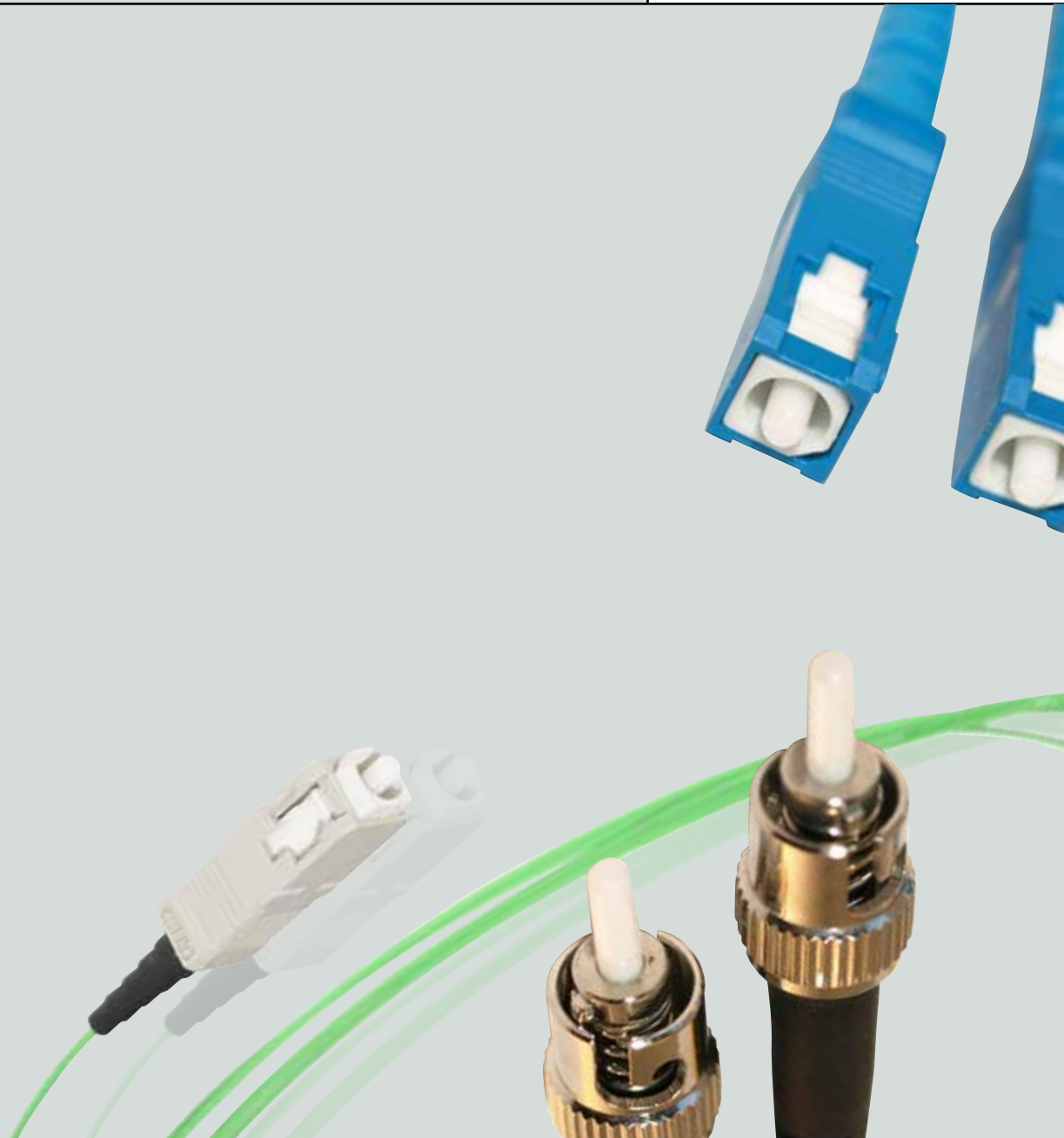


# CONEC<sup>®</sup>

TECHNOLOGY IN CONNECTORS<sup>™</sup>

## FIBER OPTIC CONNECTORS





# CONEC<sup>®</sup>

## TECHNOLOGY IN CONNECTORS<sup>™</sup>



As a leading connector manufacturer CONEC develops, produces and markets connectors worldwide to the electronic and communication industry. CONEC is committed to contribute to progress in interconnect technology and to exceed customers expectations through innovation, quality manufacturing and superior service.

The network of CONEC branch offices and subsidiaries works together as one team to achieve the best solution for the demands of our customers. The organization structure guarantees the important local support in customers projects to reach a short "time to market" for new products. CONEC maintains a high vertical integration on several production sites over the world to react quickly to changing markets and customers requirements.



CONEC designs and manufactures a wide variety of electronic connector products. CONEC provides reliable and effective solutions to problems faced by electronic equipment manufacturers, contract manufacturers and cable assembly operations.



CONEC is fast to respond to the customers needs, with "just in time" programs, logistic requirements, local inventories, central order entry and processing, broad distribution and total quality management. CONEC has earned certified supplier status with many of its large customers worldwide.



Today's and future communication technology demands fast, efficient and safe performance in the data communication process. Large and complex databases all interconnected must be able to receive and transmit data without outside interferences. CONEC manufactures an extensive fiber optic connector product line. CONEC fiber optic components are the right solution for complex systems.

# FIBER OPTIC CONNECTORS



In order to achieve accurate and precise connections of the fiber ends, very high quality ceramic components are used. CONEC fiber optic connectors made with precision and high quality ceramic components provide a high reliability connection when used with the various adapters.

The standard connector series is available in SC, ST, FC and LC version.



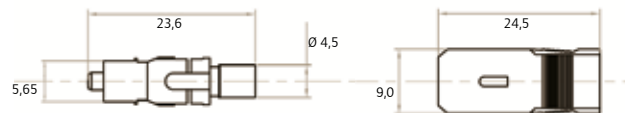
# SC-SIMPLEX CONNECTOR SET FOR 0,9 MM CABLE

Singlemode | Multimode



**TECHNICAL DATA**

- Housing material: Plastic (UL 94V-0)
- Ferrule: Ceramic
- Temperature range: -40°C to +80°C
- Mating cycles: 1000
- Set with cable boot for cable Ø 0,9 mm
- Dust caps



**ORDER TABLE**

ORDER NUMBER	SM/MM SINGLEMODE/MULTIMODE	FIBER TYPE	INSERTION LOSS dB	RETURN LOSS dB	HOUSING COLOUR
18-006360	SM/APC 8°=Singlemode	9/125 µm APC 8°	≤ 0,2	- 65	green
18-006020	SM=Singlemode	9/125 µm	≤ 0,2	- 50	blue
18-006000	MM=Multimode	50/125 µm 62,5/125µm	≤ 0,2		beige

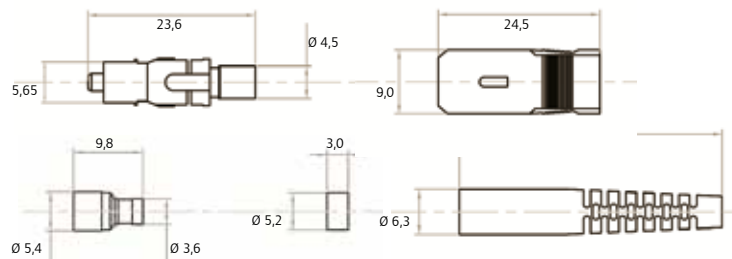
# SC-SIMPLEX CONNECTOR SET FOR 3,00 MM CABLE

Singlemode | Multimode



**TECHNICAL DATA**

- Housing material: Plastic (UL 94V-0)
- Ferrule: Ceramic
- Temperature range: -40°C to +80°C
- Mating cycles: 1000
- Set with cable boot and crimp sleeve for cable Ø 3,0 mm
- Dust caps

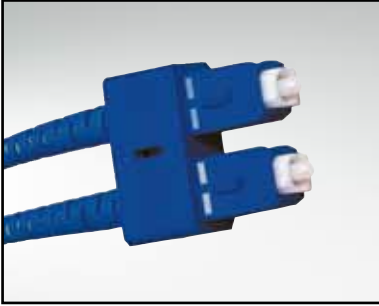


**ORDER TABLE**

ORDER NUMBER	SM/MM SINGLEMODE/MULTIMODE	FIBER TYPE	INSERTION LOSS dB	RETURN LOSS dB	HOUSING COLOUR
18-006380	SM/APC 8°=Singlemode	9/125 µm APC 8°	≤ 0,2	- 65	green
18-006080	SM=Singlemode	9/125 µm	≤ 0,2	- 50	blue
18-006040	MM=Multimode	50/125 µm 62,5/125µm	≤ 0,2		beige

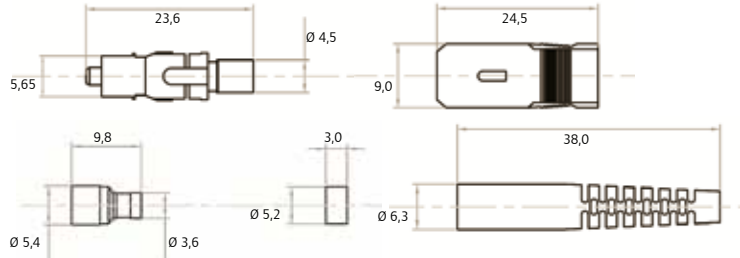
# SC-DUPLEX CONNECTOR SET FOR 3,0 MM CABLE

Singlemode | Multimode



### TECHNICAL DATA

- Housing material: Plastic (UL 94V-0)
- Ferrule: Ceramic
- Temperature range: -40°C to +80°C
- Mating cycles: 1000
- Set with cable boot and crimp sleeve for cable Ø 3,0 mm
- Dust caps



### ORDER TABLE

ORDER NUMBER	SM/MM SINGLEMODE/MULTIMODE	FIBER TYPE	INSERTION LOSS dB	RETURN LOSS dB	HOUSING COLOUR
18-006080	SM=Singlemode	9/125 µm	≤ 0,2	- 50	blue
18-006060	MM=Multimode	50/125 µm	≤ 0,2		beige
		62,5/125µm			

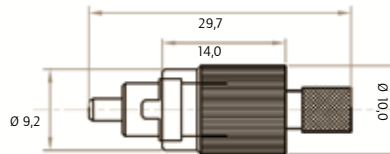
# FC-SIMPLEX CONNECTOR SET FOR 0,9 MM CABLE

Singlemode | Multimode



**TECHNICAL DATA**

- Housing material: Metal, Nickel plated
- Ferrule: Ceramic
- Temperature range: -40°C to +80°C
- Mating cycles: 1000
- Set with cable boot for cable Ø 0,9 mm
- Dust caps



**ORDER TABLE**

ORDER NUMBER	SM/MM SINGLEMODE/MULTIMODE	FIBER TYPE	INSERTION LOSS dB	RETURN LOSS dB	BOOT COLOUR
18-006300	SM=Singlemode	9/125 µm	≤ 0,2	- 50	yellow
18-006280	MM=Multimode	50/125 µm	≤ 0,2		black
		62,5/125µm			

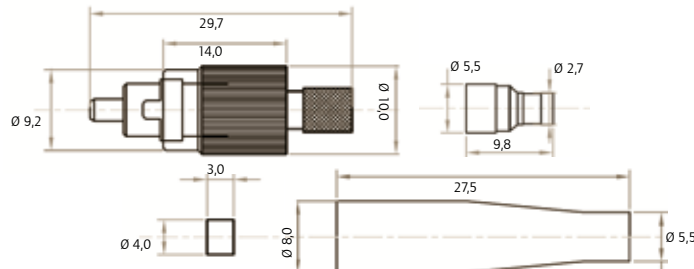
# FC-SIMPLEX CONNECTOR SET FOR 3,0 MM CABLE

Singlemode | Multimode



**TECHNICAL DATA**

- Housing material: Metal, Nickel plated
- Ferrule: Ceramic
- Temperature range: -40°C to +80°C
- Mating cycles: 1000
- Set with cable boot and crimp sleeve for cable Ø 3,0 mm
- Dust caps



**ORDER TABLE**

ORDER NUMBER	SM/MM SINGLEMODE/MULTIMODE	FIBER TYPE	INSERTION LOSS dB	RETURN LOSS dB	BOOT COLOUR
18-006340	SM=Singlemode	9/125 µm	≤ 0,2	- 50	yellow
18-006320	MM=Multimode	50/125 µm	≤ 0,2		black
		62,5/125µm			



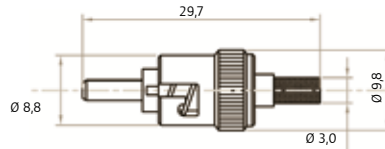
## ST-SIMPLEX CONNECTOR SET FOR 0,9 MM CABLE

Singlemode | Multimode



### TECHNICAL DATA

- Housing material: Metal Nickel plated
- Ferrule: Ceramic
- Temperature range: -40°C to +80°C
- Mating cycles: 500
- Set with cable boot for cable Ø 0,9 mm
- Dust caps



### ORDER TABLE

ORDER NUMBER	SM/MM SINGLEMODE/MULTIMODE	FIBER TYPE	INSERTION LOSS dB	RETURN LOSS dB	BOOT COLOUR
18-006160	SM=Singlemode	9/125 µm	≤ 0,2	- 50	yellow
18-006120	MM=Multimode	50/125 µm	≤ 0,2		black
		62,5/125µm			

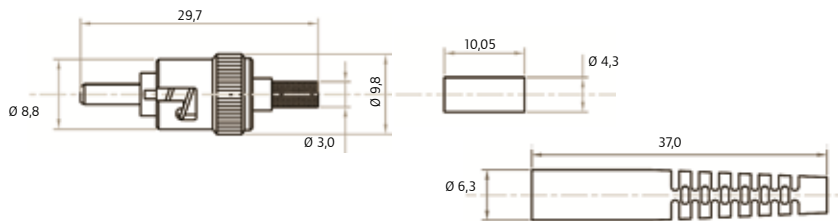
## ST-SIMPLEX CONNECTOR SET FOR 3,0 MM CABLE

Singlemode | Multimode



### TECHNICAL DATA

- Housing material: Metal, Nickel plated
- Ferrule: Ceramic
- Temperature range: -40°C to +80°C
- Mating cycles: 500
- Set with cable boot and crimp sleeve for cable Ø 3,0 mm
- Dust caps



### ORDER TABLE

ORDER NUMBER	SM/MM SINGLEMODE/MULTIMODE	FIBER TYPE	INSERTION LOSS dB	RETURN LOSS dB	BOOT COLOUR
18-006180	SM=Singlemode	9/125 µm	≤ 0,2	- 50	yellow
18-006140	MM=Multimode	50/125 µm	≤ 0,2		black
		62,5/125µm			



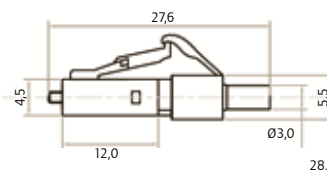
## LC-SIMPLEX CONNECTOR SET FOR 0,9 MM CABLE

Singlemode | Multimode



### TECHNICAL DATA

- Housing material: Plastic (UL 94V-0)
- Ferrule: Ceramic
- Temperature range: -40°C to +75°C
- Mating cycles: 1000
- Set with cable boot for cable Ø 0,9 mm
- Dust caps

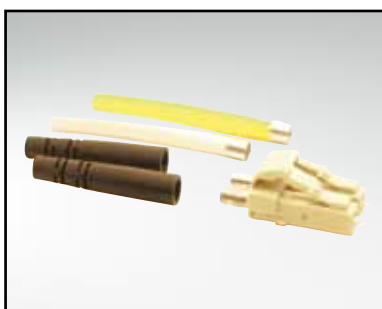


### ORDER TABLE

ORDER NUMBER	SM/MM SINGLEMODE/MULTIMODE	FIBER TYPE	INSERTION LOSS dB	RETURN LOSS dB	HOUSING COLOUR
18-006220	SM=Singlemode	9/125 µm	≤ 0,2	- 50	blue
18-006200	MM=Multimode	50/125 µm	≤ 0,2		beige
		62,5/125µm			

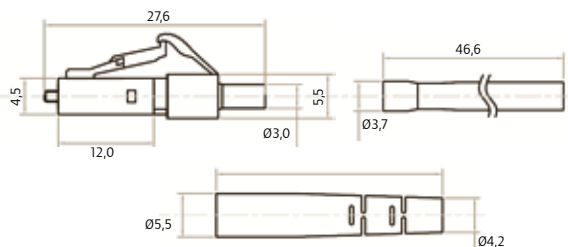
## LC-DUPLEX CONNECTOR SET FOR 2,0 MM CABLE

Singlemode | Multimode



### TECHNICAL DATA

- Housing material: Plastic (UL94V-0)
- Ferrule: Ceramic
- Temperature range: -40°C to +75°C
- Mating cycles: 1000
- Set with cable boot and crimp sleeve for cable Ø 2,0 mm
- Dust caps



### ORDER TABLE

ORDER NUMBER	SM/MM SINGLEMODE/MULTIMODE	FIBER TYPE	INSERTION LOSS dB	RETURN LOSS dB	HOUSING COLOUR
18-006260	SM=Singlemode	9/125 µm	≤ 0,2	- 50	blue
18-006240	MM=Multimode	50/125 µm	≤ 0,2		beige
		62,5/125µm			

To support different application requirements adapters are available from CONEC, comprising phosphor bronze alternatively ceramic sleeves. Adapters are available in both plastic and diecast housing. The adapters are offered in simplex and duplex configurations. Adapter types e. g. SC - ST - FC and LC are also available.

# FIBER OPTIC ADAPTERS

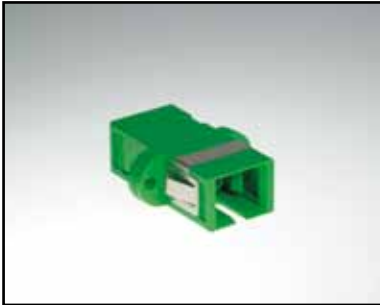
---

To support their fiber optic programmes CONEC supply a wide range of adapters. All adapters conform to international standards. Therefore they are compatible with products currently available in the market place. CONEC have paid specific attention to the content and quality of the raw materials, this is critical to ensure reliable performance in service. The accuracy of the core alignment are critical with light conducting circuits.



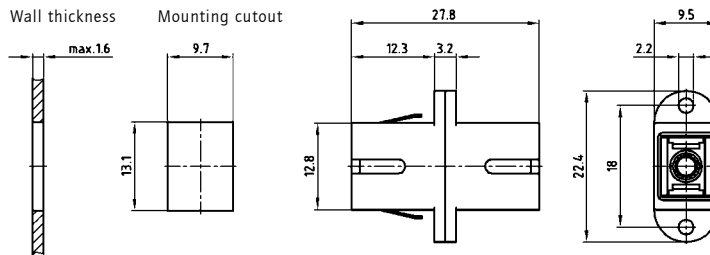
# SC-SIMPLEX-ADAPTERS

Singlemode | Multimode



### TECHNICAL DATA

- Housing material: Plastic (UL 94V-0)
- Sleeve: Phosphor-Bronze; Ceramic
- Spring plate: Stainless steel
- Dust caps



KAT1iWDA\_1

### ORDER TABLE

ORDER NUMBER	SM/MM SINGLEMODE/MULTIMODE	SLEEVE	HOUSING COLOUR
18-007000	SM/APC 8°=Singlemode	ceramic	green
18-007020	SM=Singlemode	ceramic	blue
18-007040	MM=Multimode	phosphor-bronze	beige

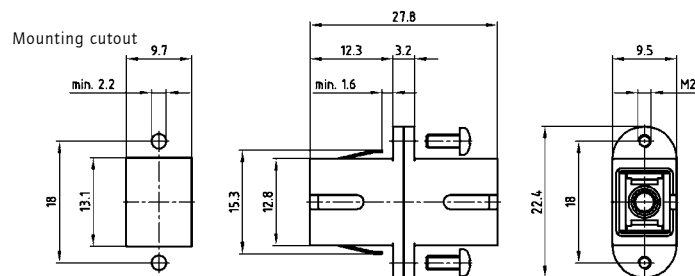
# SC-SIMPLEX-METAL ADAPTERS

Singlemode | Multimode



### TECHNICAL DATA

- Housing material: Metal
- Plating: Nickel
- Spring plate: Stainless steel
- Dust caps
- Sleeve: Phosphor-Bronze; Ceramic



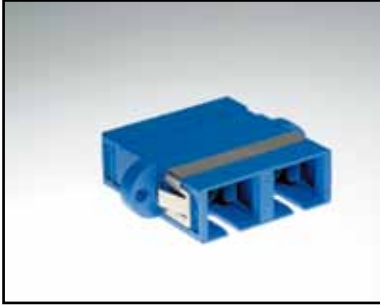
KAT1iWDA\_2

### ORDER TABLE

ORDER NUMBER	SM/MM SINGLEMODE/MULTIMODE	SLEEVE	INNER HOUSING COLOUR	MOUNT
18-007120	SM/APC 8°=Singlemode	ceramic	green	M2x6 screw
18-007140	SM=Singlemode	ceramic	blue	M2x6 screw
18-007160	MM=Multimode	ceramic	beige	M2x6 screw
18-007180	MM=Multimode	phosphor-bronze	beige	M2x6 screw
18-007200	SM/APC 8°=Singlemode	ceramic	green	spring plate
18-007220	SM=Singlemode	ceramic	blue	spring plate
18-007240	MM=Multimode	ceramic	beige	spring plate
18-007260	MM=Multimode	phosphor-bronze	beige	spring plate

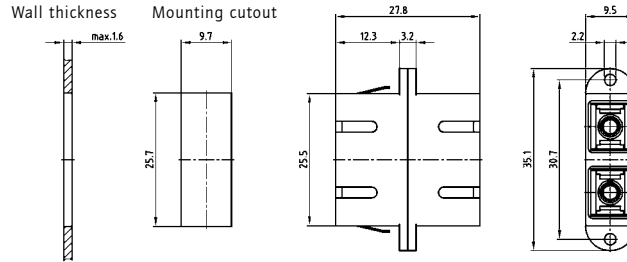
# SC-DUPLEX-ADAPTERS

Singlemode | Multimode



### TECHNICAL DATA

- Housing material: Plastic (UL 94V-0)
- Sleeve: Phosphor-Bronze; Ceramic
- Spring plate: Stainless steel
- Dust caps



KAT11WEA\_1

### ORDER TABLE

ORDER NUMBER	SM/MM SINGLEMODE/MULTIMODE	SLEEVE	HOUSING COLOUR
18-007060	SM/APC 8°=Singlemode	ceramic	green
18-007080	SM=Singlemode	ceramic	blue
18-007100	MM=Multimode	phosphor-bronze	beige

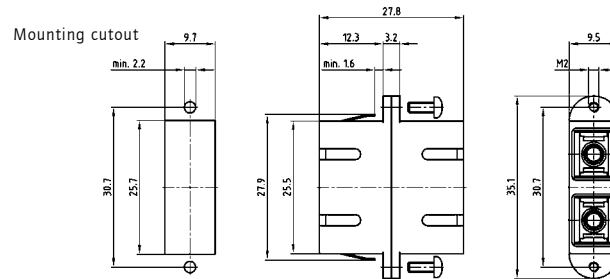
# SC-DUPLEX-METAL ADAPTERS

Singlemode | Multimode



### TECHNICAL DATA

- Housing material: Metal
- Plating: Nickel
- Spring plate: Stainless steel
- Adapters are supplied with dust caps
- Sleeve: Phosphor-Bronze Ceramic



KAT11WEA\_2

### ORDER TABLE

ORDER NUMBER	SM/MM SINGLEMODE/MULTIMODE	SLEEVE	INNER HOUSING COLOUR	MOUNT
18-007280	SM/APC 8°=Singlemode	ceramic	green	M2x6 screw
18-007300	SM=Singlemode	ceramic	blue	M2x6 screw
18-007320	MM=Multimode	ceramic	beige	M2x6 screw
18-007340	MM=Multimode	phosphor-bronze	beige	M2x6 screw
18-007360	SM/APC 8°=Singlemode	ceramic	green	spring plate
18-007380	SM=Singlemode	ceramic	blue	spring plate
18-007400	MM=Multimode	ceramic	beige	spring plate
18-007420	MM=Multimode	phosphor-bronze	beige	spring plate

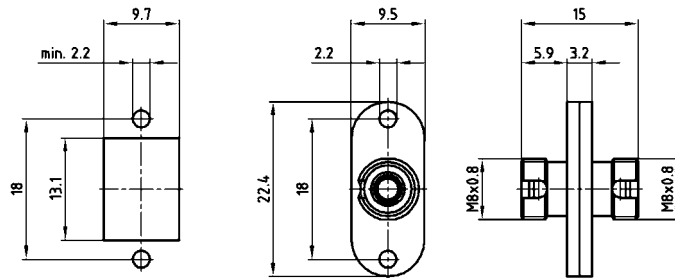
# FC-SIMPLEX-ADAPTERS

Singlemode | Multimode



### TECHNICAL DATA

- Housing material: Plastic (UL 94V-0)
- Sleeve: Phosphor-Bronze; Ceramic
- Spring plate: Stainless steel
- Dust caps



KAT11WGA

### ORDER TABLE

ORDER NUMBER	SM/MM SINGLEMODE/MULTIMODE	SLEEVE	HOUSING COLOUR
18-007480	SM=Singlemode	ceramic	blue
18-007500	MM=Multimode	phosphor-bronze	beige

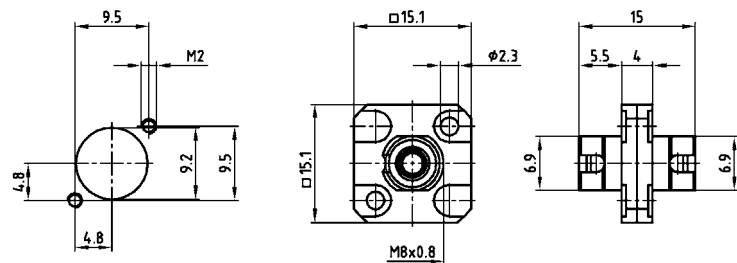
# FC-SIMPLEX-METAL ADAPTERS

Singlemode | Multimode



### TECHNICAL DATA

- Housing material: Metal
- Plating: Nickel
- Dust caps
- Sleeve: Phosphor-Bronze; Ceramic



KAT11WHA

### ORDER TABLE

ORDER NUMBER	SM/MM SINGLEMODE/MULTIMODE	SLEEVE	HOUSING COLOUR
18-007520	SM/APC 8°=Singlemode	ceramic	zinc diecast
18-007540	SM=Singlemode	ceramic	zinc diecast
18-007560	MM=Multimode	ceramic	zinc diecast
18-007580	MM=Multimode	phosphor-bronze	zinc diecast

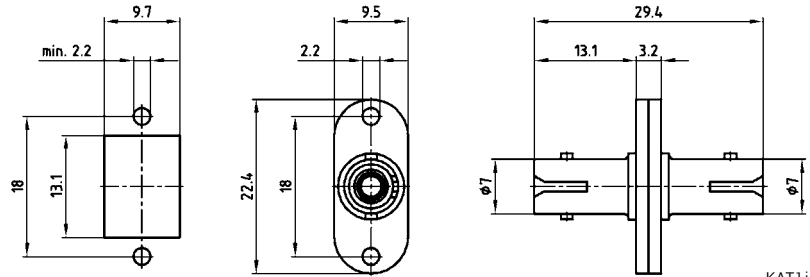
## ST-SIMPLEX-ADAPTERS

Singlemode | Multimode



### TECHNICAL DATA

- Housing material: Plastic (UL 94V-0)
- Sleeve: Phosphor-Bronze; Ceramic
- Dust caps



KAT1iWLA

### ORDER TABLE

ORDER NUMBER	SM/MM SINGLEMODE/MULTIMODE	SLEEVE	HOUSING COLOUR
18-007680	SM=Singlemode	ceramic	blue
18-007700	MM=Multimode	phosphor-bronze	beige

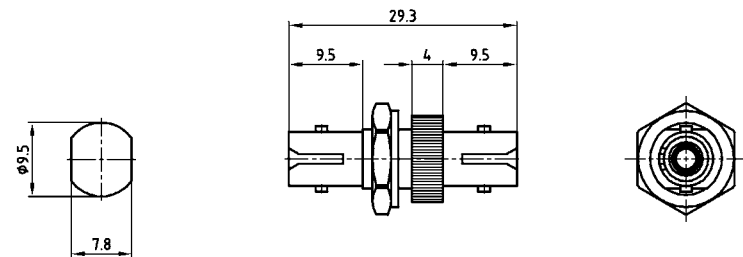
## ST-SIMPLEX-METAL ADAPTERS

Singlemode | Multimode



### TECHNICAL DATA

- Housing material: Zinc diecast
- Plating: Nickel
- Sleeve: Phosphor-Bronze; Ceramic
- Dust caps



KAT1iXYA

### ORDER TABLE

ORDER NUMBER	SM/MM SINGLEMODE/MULTIMODE	SLEEVE	HOUSING
18-007760	SM=Singlemode	ceramic	zinc diecast
18-007780	MM=Multimode	ceramic	zinc diecast
18-007800	MM=Multimode	phosphor-bronze	zinc diecast

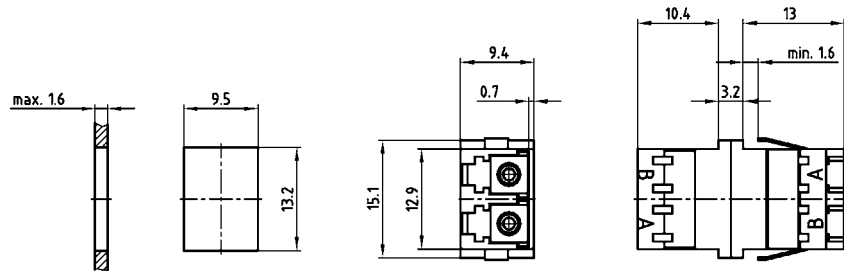
# LC-DUPLEX-ADAPTERS

Singlemode | Multimode



### TECHNICAL DATA

- Housing material: Plastic (UL 94V-0)
- Sleeve: Ceramic, Phosphor-bronze
- Spring plate: Stainless steel
- Dust caps



KAT11YSA

### ORDER TABLE

ORDER NUMBER	SM/MM SINGLEMODE/MULTIMODE	SLEEVE	HOUSING COLOUR	MOUNT
18-007880	SM/APC 8°=Singlemode	ceramic	green	spring plate
18-007900	SM=Singlemode	ceramic	blue	spring plate
18-007920	MM=Multimode	ceramic	beige	spring plate
18-007940	MM=Multimode	phosphor-bronze	beige	spring plate

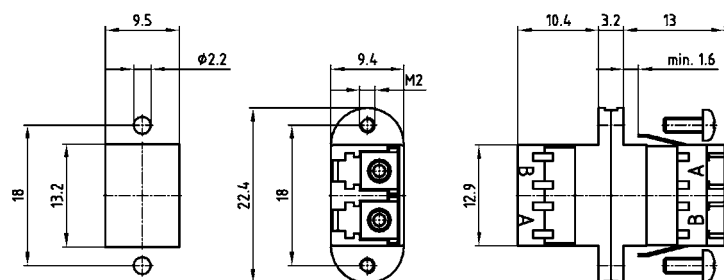
# LC-DUPLEX-ADAPTERS WITH FLANGE

Singlemode | Multimode



### TECHNICAL DATA

- Housing material: Plastic (UL 94V-0)
- Sleeve: Ceramic, Phosphor-bronze
- Dust caps



KAT1 KDCA

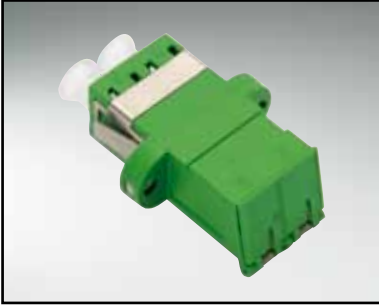
### ORDER TABLE

ORDER NUMBER	SM/MM SINGLEMODE/MULTIMODE	SLEEVE	HOUSING COLOUR	MOUNT
18-007960	SM/APC 8°=Singlemode	ceramic	green	M2x6 screw
18-007980	SM=Singlemode	ceramic	blue	M2x6 screw
18-008000	MM=Multimode	ceramic	beige	M2x6 screw
18-008020	MM=Multimode	phosphor-bronze	beige	M2x6 screw
18-008040	SM/APC 8°=Singlemode	ceramic	green	spring plate
18-008060	SM=Singlemode	ceramic	blue	spring plate
18-008080	MM=Multimode	ceramic	beige	spring plate
18-008100	MM=Multimode	phosphor-bronze	beige	spring plate



# LC-DUPLEX-ADAPTERS WITH SHUTTER

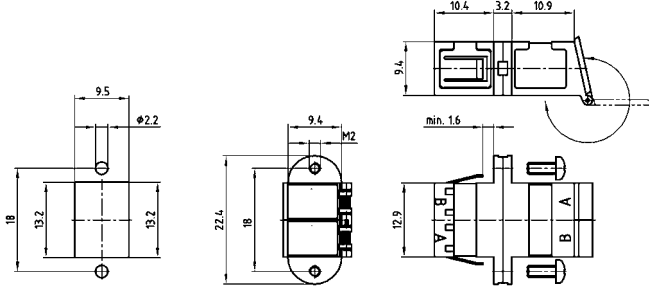
Singlemode | Multimode



Available with different mounting options:  
 ■ clip ■ screws

### TECHNICAL DATA

- Housing material: Plastic (UL 94V-0)
- Sleeve: Ceramic
- Dust caps

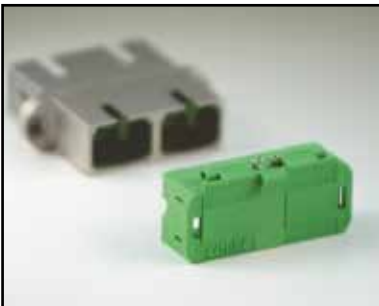


KAT1 KDDA

### ORDER TABLE

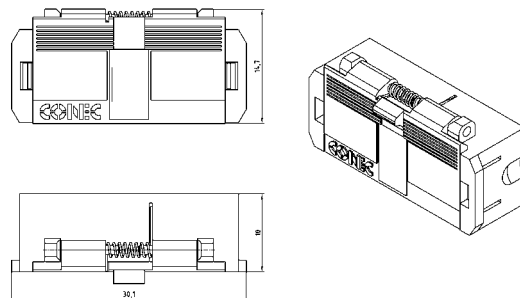
ORDER NUMBER	SM/MM SINGLEMODE/MULTIMODE	SLEEVE	HOUSING COLOUR	MOUNT
18-008120	SM/APC 8°=Singlemode	ceramic	green	M2x6 screw
18-008140	SM=Singlemode	ceramic	blue	M2x6 screw
18-008160	SM/APC 8°=Singlemode	ceramic	green	spring plate
18-008180	SM=Singlemode	ceramic	blue	spring plate

# SC-DUPLEX-SHUTTER



### TECHNICAL DATA

- Housing material: Plastic (UL 94V-0)
- Temperature range: -40°C to +75°C
- Snap on shutter
- Dust protection



KAT1KDBA

### ORDER TABLE

ORDER NUMBER	HOUSING COLOUR
18-007440	green
18-007460	blue

In many applications various fiber optic connectors are used at the transmission outlet. Connectivity problems can be overcome by using CONEC hybrid fiber optic Adapters, eliminating the need to change connectors.

Hybrid fiber optic adapters are available in the SC/ST, SC/FC and FC/ST configurations, they come in either plastic or metal.

For customer specific applications, please contact us.

# FIBER OPTIC HYBRID ADAPTERS



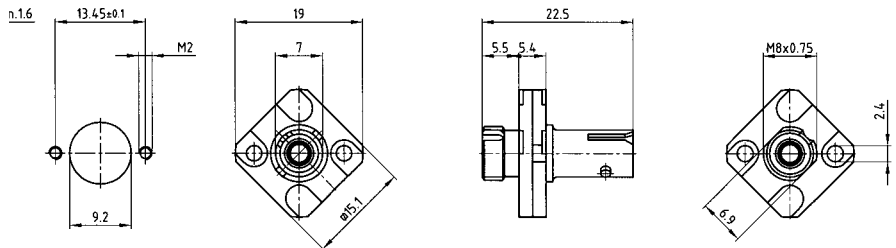
# FC/ST-SIMPLEX-HYBRID-METAL ADAPTERS

Singlemode | Multimode



### TECHNICAL DATA

- Housing material: Zinc diecast
- Plating: Nickel
- Dust caps
- Sleeve: Phosphor-Bronze; Ceramic



KATii WVA

### ORDER TABLE

ORDER NUMBER	SM/MM SINGLEMODE/MULTIMODE	SLEEVE	HOUSING
18-010560	SM=Singlemode	ceramic	zinc diecast
18-010580	MM=Multimode	ceramic	zinc diecast
18-010600	MM=Multimode	phosphor-bronze	zinc diecast

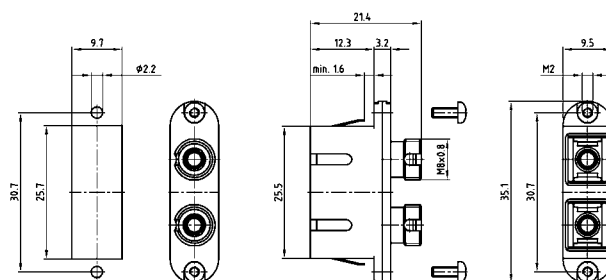
# SC/FC-DUPLEX-HYBRID-METAL ADAPTERS

Singlemode | Multimode



### TECHNICAL DATA

- Housing material: Zinc diecast
- Plating: Nickel
- Sleeve: Phosphor-Bronze; Ceramic
- Spring plate: Stainless steel
- Dust caps



KATii WRA

### ORDER TABLE

ORDER NUMBER	SM/MM SINGLEMODE/MULTIMODE	SLEEVE	INNER HOUSING COLOUR	MOUNT
18-010140	SM/APC 8°=Singlemode	ceramic	green	M2x6 screw
18-010160	SM=Singlemode	ceramic	blue	M2x6 screw
18-010180	MM=Multimode	ceramic	beige	M2x6 screw
18-010200	MM=Multimode	phosphor-bronze	beige	M2x6 screw
18-010220	SM/APC 8°=Singlemode	ceramic	green	spring plate
18-010240	SM=Singlemode	ceramic	blue	spring plate
18-010260	MM=Multimode	ceramic	beige	spring plate
18-010280	MM=Multimode	phosphor-bronze	beige	spring plate

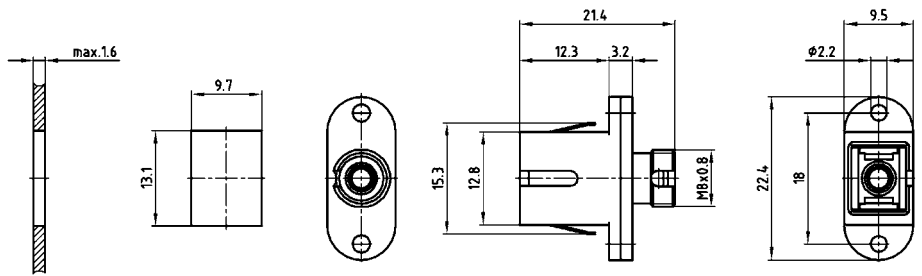
# SC/FC-SIMPLEX-HYBRID ADAPTERS

Singlemode | Multimode



### TECHNICAL DATA

- Housing material: Plastic (UL 94V-0)
- Sleeve: Phosphor-Bronze; Ceramic
- Spring plate: Stainless steel
- Dust caps



KAT11WPA

### ORDER TABLE

ORDER NUMBER	SM/MM SINGLEMODE/MULTIMODE	SLEEVE	HOUSING COLOUR
18-010000	SM/APC 8°=Singlemode	ceramic	green
18-010020	SM=Singlemode	ceramic	blue
18-010040	MM=Multimode	phosphor-bronze	beige

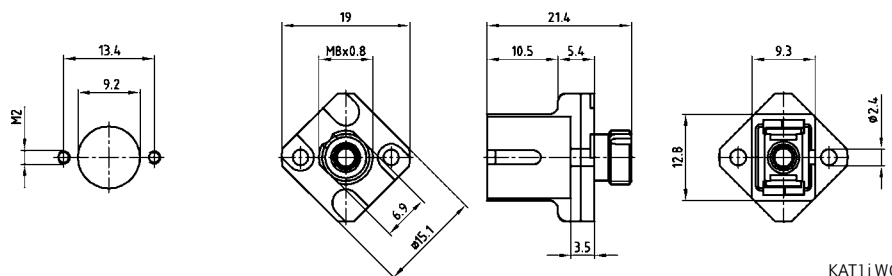
# SC/FC-SIMPLEX-HYBRID-METAL ADAPTERS

Singlemode | Multimode



### TECHNICAL DATA

- Housing material: Zinc diecast
- Plating: Nickel
- Dust caps
- Sleeve: Phosphor-Bronze; Ceramic



KAT11WQA

### ORDER TABLE

ORDER NUMBER	SM/MM SINGLEMODE/MULTIMODE	SLEEVE	HOUSING	INNER HOUSING COLOUR
18-010060	SM/APC 8°=Singlemode	ceramic	zinc diecast	green
18-010080	SM=Singlemode	ceramic	zinc diecast	blue
18-010100	MM=Multimode	ceramic	zinc diecast	beige
18-010120	MM=Multimode	phosphor-bronze	zinc diecast	beige

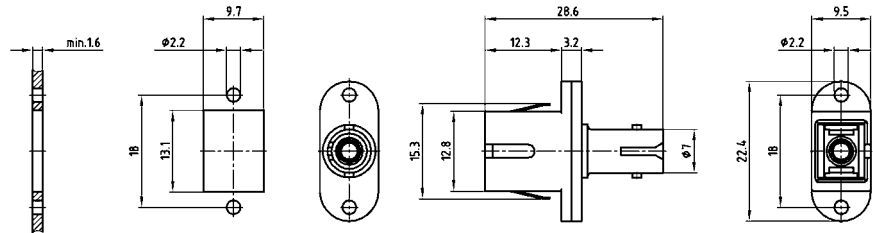
# SC/ST-SIMPLEX-HYBRID ADAPTERS

Singlemode | Multimode



### TECHNICAL DATA

- Housing material: Plastic (UL 94V-0)
- Sleeve: Phosphor-Bronze; Ceramic
- Spring plate: Stainless steel
- Dust caps



KAT1i WSA

### ORDER TABLE

ORDER NUMBER	SM/MM SINGLEMODE/MULTIMODE	SLEEVE	HOUSING COLOUR
18-010300	SM=Singlemode	ceramic	blue
18-010320	MM=Multimode	phosphor-bronze	beige

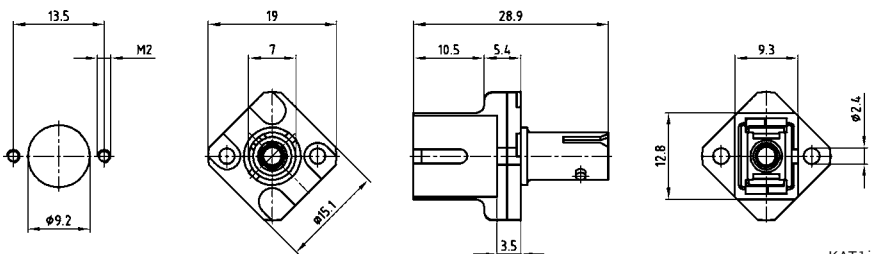
# SC/ST-SIMPLEX-HYBRID-METAL ADAPTERS

Singlemode | Multimode



### TECHNICAL DATA

- Housing material: Zinc diecast
- Plating: Nickel
- Dust caps
- Sleeve: Phosphor-Bronze; Ceramic



KAT1i WUA

### ORDER TABLE

ORDER NUMBER	SM/MM SINGLEMODE/MULTIMODE	SLEEVE	HOUSING	INNER HOUSING COLOUR
18-010500	SM=Singlemode	ceramic	zinc diecast	blue
18-010520	MM=Multimode	ceramic	zinc diecast	beige
18-010540	MM=Multimode	phosphor-bronze	zinc diecast	beige

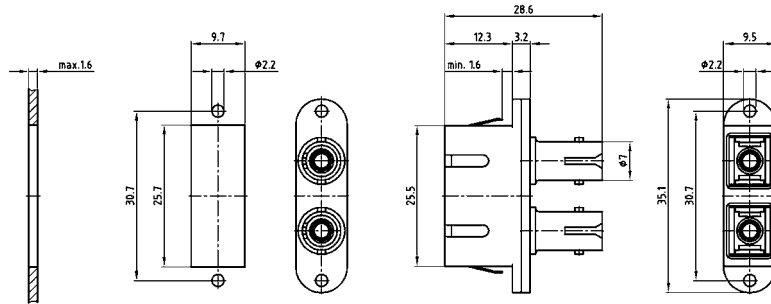
# SC/ST-DUPLEX-HYBRID ADAPTERS

Singlemode | Multimode



### TECHNICAL DATA

- Housing material: Plastic (UL 94V-0)
- Sleeve: Phosphor-Bronze; Ceramic
- Spring plate: Stainless steel
- Dust caps



### ORDER TABLE

KAT1i WTA

ORDER NUMBER	SM/MM SINGLEMODE/MULTIMODE	SLEEVE	OUTER HOUSING COLOUR
18-010340	SM=Singlemode	ceramic	blue
18-010360	MM=Multimode	phosphor-bronze	beige

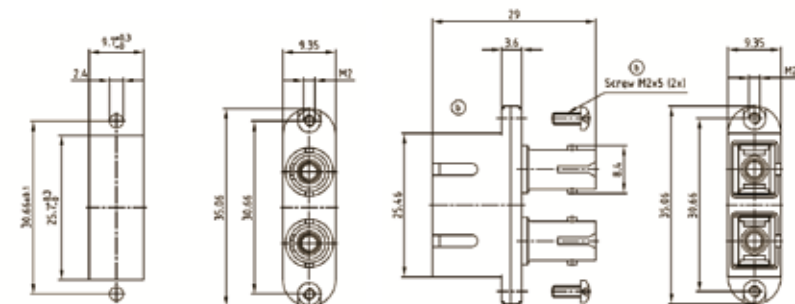
# SC/ST-DUPLEX-HYBRID-METAL ADAPTERS

Singlemode | Multimode



### TECHNICAL DATA

- Housing material: Zinc diecast
- Plating: Nickel
- Spring plate: Stainless steel
- Dust caps
- Sleeve: Phosphor-Bronze; Ceramic



KAT1i WRA

### ORDER TABLE

ORDER NUMBER	SM/MM SINGLEMODE/MULTIMODE	SLEEVE	INNER HOUSING COLOUR	MOUNT
18-010380	SM=Singlemode	ceramic	blue	M2x6 screw
18-010400	MM=Multimode	ceramic	beige	M2x6 screw
18-010420	MM=Multimode	phosphor-bronze	beige	M2x6 screw
18-010440	SM=Singlemode	ceramic	blue	spring plate
18-010460	MM=Multimode	ceramic	beige	spring plate
18-010480	MM=Multimode	phosphor-bronze	beige	spring plate

CONEC has developed a ruggedized fiber optic connector in IP67 on SC-connector basis. The outer housing is a standard D-Sub metal housing and fits into customary panels. In combination with special outdoor cable this connector is favoured for outdoor applications. The compact style allows high density packaging.

## Fiber Optic Outdoor

---







# FIBER OPTIC OUTDOOR CONNECTOR



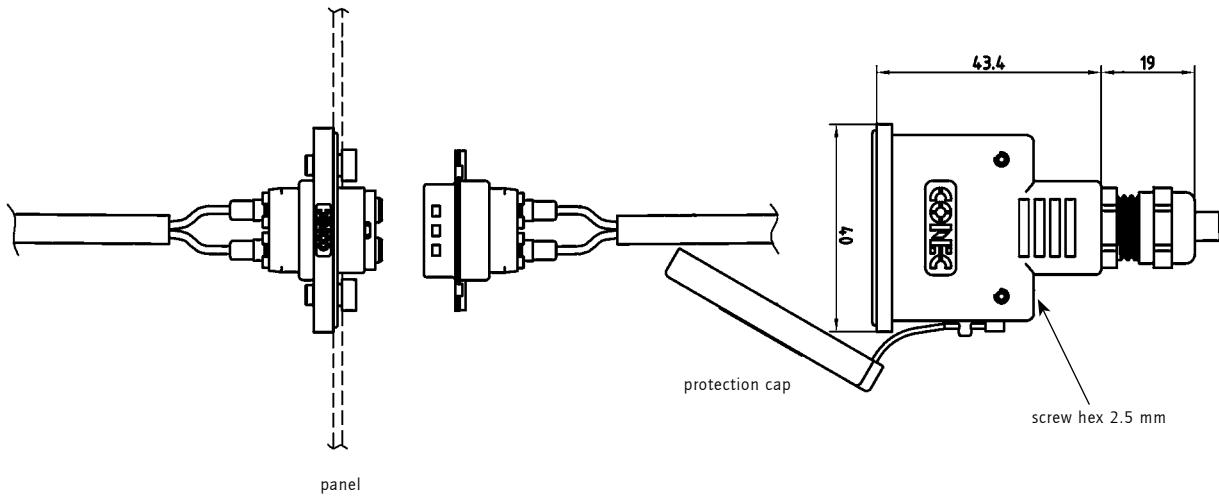
## TECHNICAL DATA

- Temperature range -40 °C to +80°C
- Mating cycles: 100
- Ferrule: Ceramic

## CHARACTERISTICS

- Duplex connector
- Based on SC-plugs
- Multimode and Singlemode
- IP67
- D-Sub metal housing
- D-Sub panel
- Captive dust boot made of metal IP65

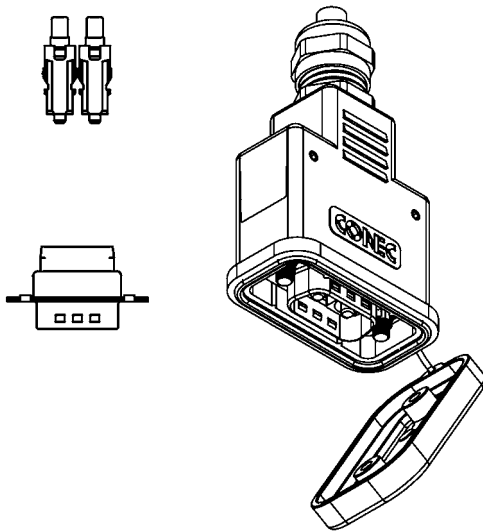
## SYSTEM OVERVIEW



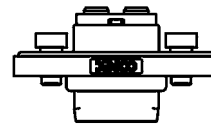
# FIBER OPTIC OUTDOOR CONNECTOR



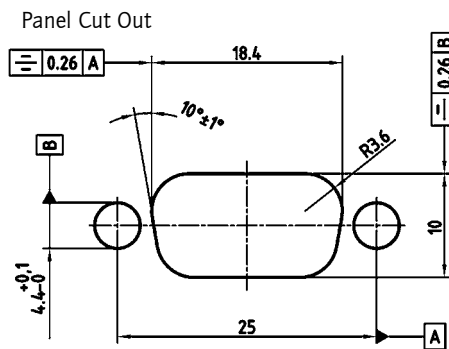
**A** Hood System with Connector



**B** Panel Adapter



**C** Panel Connector (2x)



## ORDER TABLE

Order number	Part	SM/MM Singlemode/Multimode	Fiber type	Insertion loss dB*	Return loss dB*
18-006800	<b>A</b>	Hood System with Connector (SM)	9/125 μm	≤ 0.3	- 40
18-006820	<b>B</b>	Panel Adapter (SM)			
18-006840	<b>C</b>	Panel Connector (SM)**			
18-006860	<b>A</b>	Hood System with Connector (MM)	50/125 μm 62.5/125 μm	≤ 0.3	- 40
18-00880	<b>B</b>	Panel Adapter (MM)			
18-006900	<b>C</b>	Panel Connector (MM)**			

\*Typical values for PC-Polishing

\*\*Please note: 2 Panel Connectors are needed to complete one panel adapter.

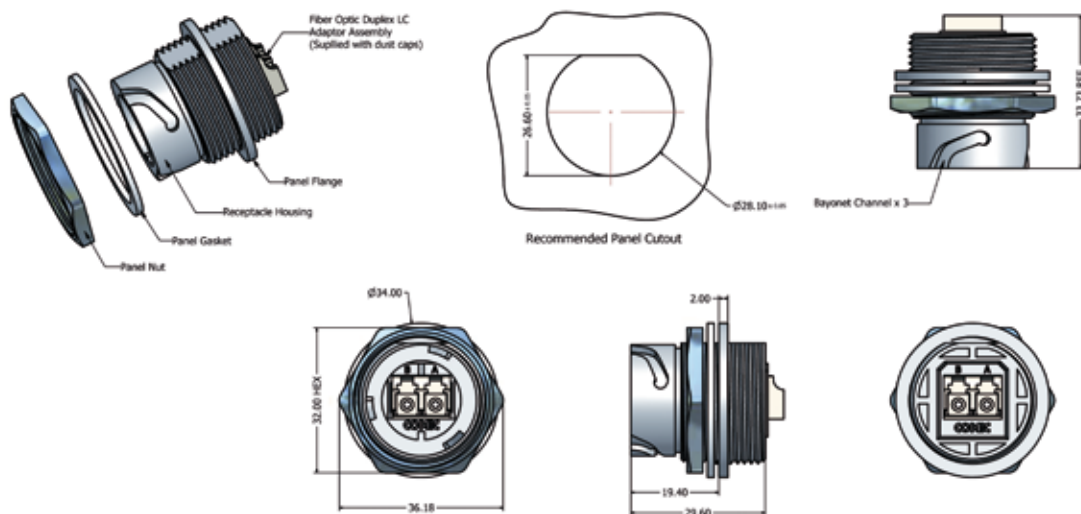
# IP67 FIBER OPTIC INDUSTRIAL DUPLEX LC CONNECTOR

## Receptacle Assembly Kit



### CHARACTERISTICS

- industrial version with bayonet coupling
- for front or rear panel mount to a max. panel thickness of 3,2 mm
- receptacle housing: polyester (black); UL 94 V-0
- panel nut: brass, nickel plated
- panel gasket: silicone (white)
- duplex LC adaptor assembly with dust caps
- operating temperature: -40°C to +85°C



### ORDER TABLE

Type	Material	SM/ MM	Part Number
Receptacle assembly kit	plastic, black	Single Mode	17-300010
Receptacle assembly kit	plastic, black	Multi Mode	17-300020

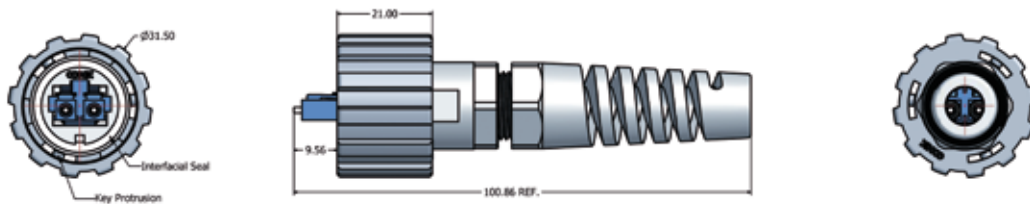
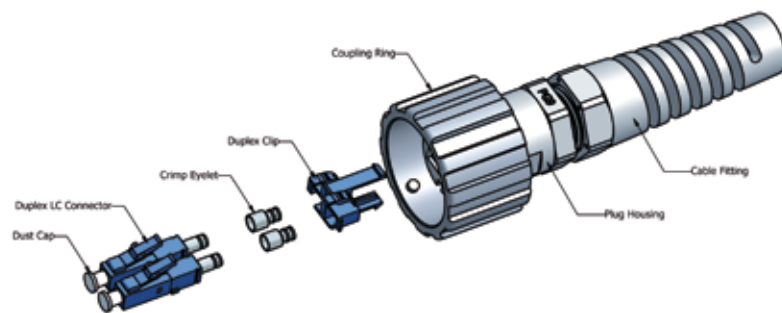
# IP67 FIBER OPTIC INDUSTRIAL DUPLEX LC CONNECTOR Plug Kit

## Plug Kit



### CHARACTERISTICS

- plug kit with bayonet coupling ring
- material: polyester (black), UL94 V-0
- duplex LC connector with dust caps
- operating temperature: -40°C to +85°C

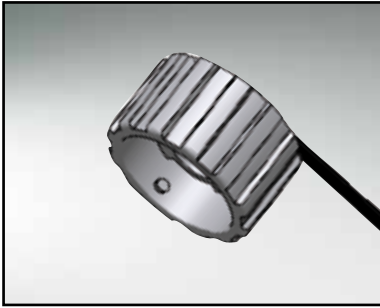


### ORDER TABLE

Type	Material	SM/ MM	Part Number
Plug kit	plastic, black	Single Mode	17-300030
Plug kit	plastic, black	Multi Mode	17-300040

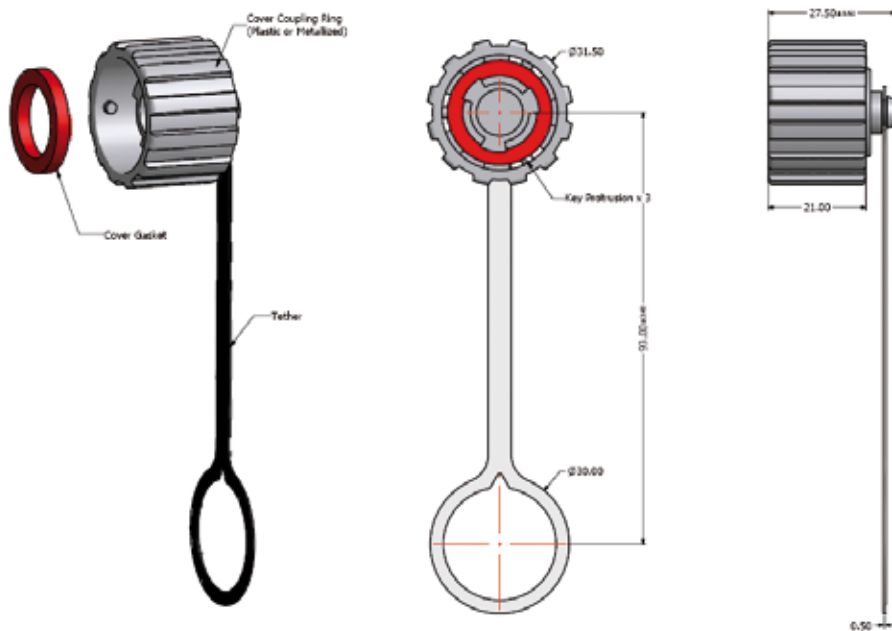
# IP67 FIBER OPTIC INDUSTRIAL DUPLEX LC CONNECTOR

Protective cover for receptacle



## CHARACTERISTICS

- IP67 protection for unmated connectors
- material protective cover: polyester (black); UL 94 V-0
- material tether: polycarbonate (black)
- operating temperature: -40°C to +85°C

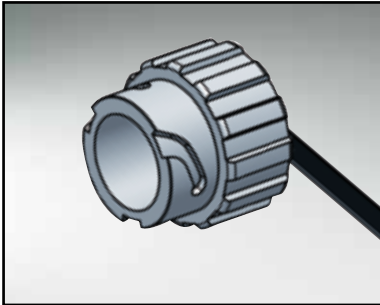


## ORDER TABLE

Type	Material	Part Number
Protective cover receptacle	plastic, black	17-10002

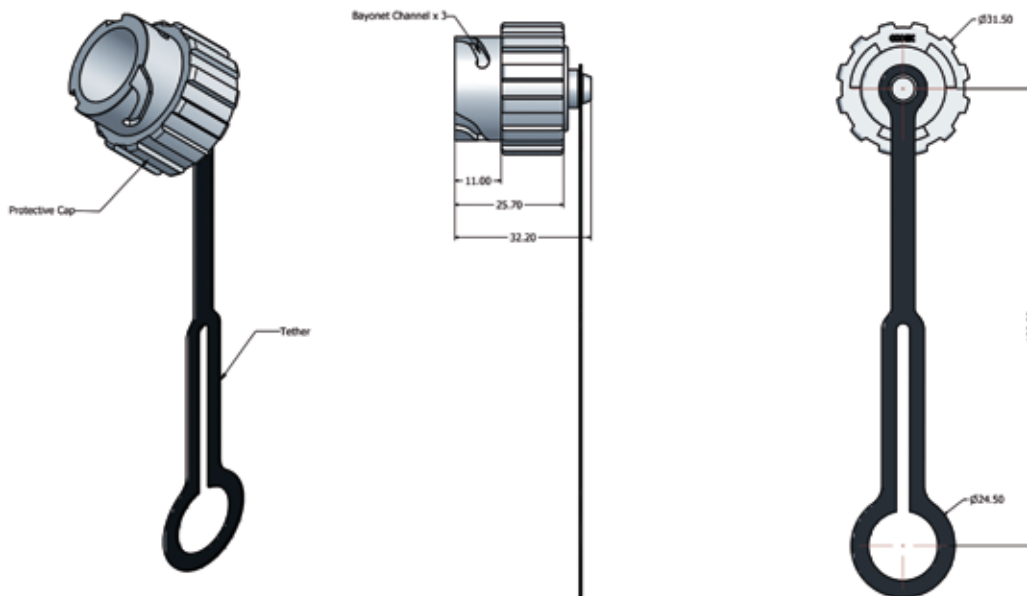
# IP67 FIBER OPTIC INDUSTRIAL DUPLEX LC CONNECTOR

Protective cover for plug



## CHARACTERISTICS

- IP67 protection for unmated plug assemblies
- material protective cover: polyester (black); UL 94 V-0
- material tether: polycarbonate (black)
- operating temperature: -40°C to +85°C



## ORDER TABLE

Type	Material	Part Number
Protective cover receptacle	plastic, black	17-300050



CONEC delivers high quality fiber optic cables and components. You can select from our wide range of standard fiber optic products.

# Section 5 Fiber Optic Cable Assembly





## TECHNICAL SPECIFICATION

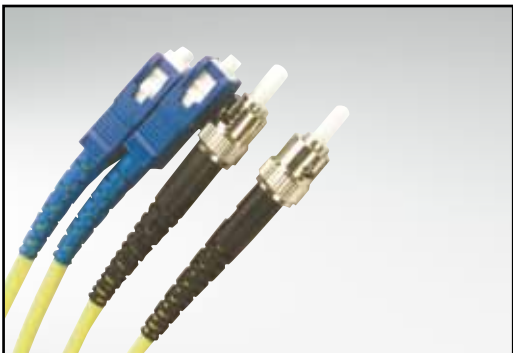
	Single Mode		Multi Mode
Connector	FC, SC, LC	ST	FC, SC, ST, LC
Cable Dia. (mm)	Ø 3,0 / Ø 2,0 / Ø 0,9		
Insertion Loss (dB)	< 0,3 (PC)	< 0,3 (PC)	< 0,2 (PC)
	< 0,2 (UPC)	< 0,2 (UPC)	
	< 0,3 (APC)		
Return Loss (dB)	> 45 (PC)	> 45 (PC)	
	> 50 (UPC)	> 50 (UPC)	
	> 65 (APC)		
Exchangeability	< 0,2 dB (Connect Randomly)		
Vibration	< 0,2 dB (5-50 Hz, 1,5 mm Amplitude)		
Temperature Range	< 0,2 dB (-40°C to 80°C; 5 Cycles)		

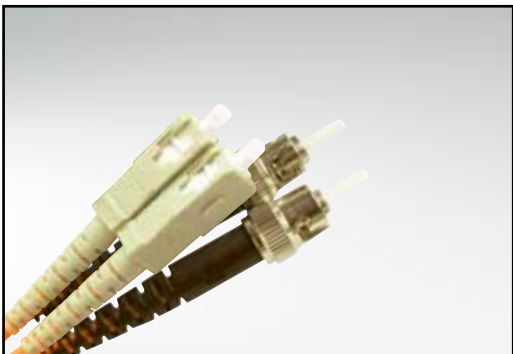
# PRE-ASSEMBLED PATCH CABLES

## Duplex Patch Cables

	DESCRIPTION	Ø CABLE	LENGTH	ORDER NUMBER
	Duplex Patch Cable ST-ST, Single Mode 9/125 µm	3,00 mm	1,0 m	18-100010
	Duplex Patch Cable ST-ST, Single Mode 9/125 µm	3,00 mm	2,0 m	18-100020
	Duplex Patch Cable ST-ST, Single Mode 9/125 µm	3,00 mm	3,0 m	18-100030
	Duplex Patch Cable ST-ST, Single Mode 9/125 µm	3,00 mm	5,0 m	18-100040
	Duplex Patch Cable ST-ST, Single Mode 9/125 µm	3,00 mm	10,0 m	18-100050

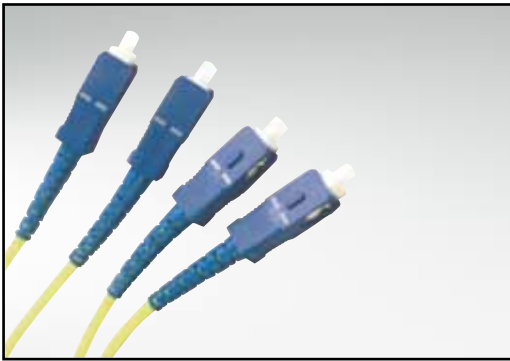
	DESCRIPTION	Ø CABLE	LENGTH	ORDER NUMBER
	Duplex Patch Cable ST-ST, Multi Mode 50/125 µm	3,00 mm	1,0 m	18-100060
	Duplex Patch Cable ST-ST, Multi Mode 50/125 µm	3,00 mm	2,0 m	18-100070
	Duplex Patch Cable ST-ST, Multi Mode 50/125 µm	3,00 mm	3,0 m	18-100080
	Duplex Patch Cable ST-ST, Multi Mode 50/125 µm	3,00 mm	5,0 m	18-100090
	Duplex Patch Cable ST-ST, Multi Mode 50/125 µm	3,00 mm	10,0 m	18-100100
	Duplex Patch Cable ST-ST, Multi Mode 62,5/125 µm	3,00 mm	1,0 m	18-100110
	Duplex Patch Cable ST-ST, Multi Mode 62,5/125 µm	3,00 mm	2,0 m	18-100120
	Duplex Patch Cable ST-ST, Multi Mode 62,5/125 µm	3,00 mm	3,0 m	18-100130
	Duplex Patch Cable ST-ST, Multi Mode 62,5/125 µm	3,00 mm	5,0 m	18-100140
	Duplex Patch Cable ST-ST, Multi Mode 62,5/125 µm	3,00 mm	10,0 m	18-100150

	DESCRIPTION	Ø CABLE	LENGTH	ORDER NUMBER
	Duplex Patch Cable SC-ST, Single Mode 9/125 µm	3,00 mm	1,0 m	18-100210
	Duplex Patch Cable SC-ST, Single Mode 9/125 µm	3,00 mm	2,0 m	18-100220
	Duplex Patch Cable SC-ST, Single Mode 9/125 µm	3,00 mm	3,0 m	18-100230
	Duplex Patch Cable SC-ST, Single Mode 9/125 µm	3,00 mm	5,0 m	18-100240
	Duplex Patch Cable SC-ST, Single Mode 9/125 µm	3,00 mm	10,0 m	18-100250

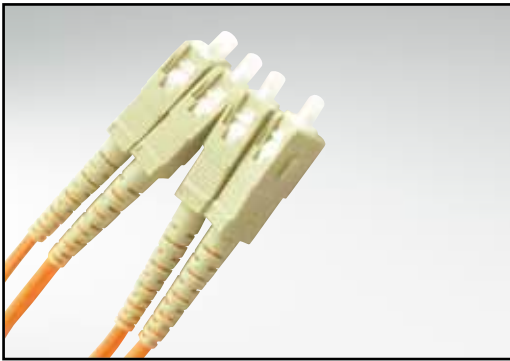
	DESCRIPTION	Ø CABLE	LENGTH	ORDER NUMBER
	Duplex Patch Cable SC-ST, Multi Mode 50/125 µm	3,00 mm	1,0 m	18-100260
	Duplex Patch Cable SC-ST, Multi Mode 50/125 µm	3,00 mm	2,0 m	18-100270
	Duplex Patch Cable SC-ST, Multi Mode 50/125 µm	3,00 mm	3,0 m	18-100280
	Duplex Patch Cable SC-ST, Multi Mode 50/125 µm	3,00 mm	5,0 m	18-100290
	Duplex Patch Cable SC-ST, Multi Mode 50/125 µm	3,00 mm	10,0 m	18-100300
	Duplex Patch Cable SC-ST, Multi Mode 62,5/125 µm	3,00 mm	1,0 m	18-100310
	Duplex Patch Cable SC-ST, Multi Mode 62,5/125 µm	3,00 mm	2,0 m	18-100320
	Duplex Patch Cable SC-ST, Multi Mode 62,5/125 µm	3,00 mm	3,0 m	18-100330
	Duplex Patch Cable SC-ST, Multi Mode 62,5/125 µm	3,00 mm	5,0 m	18-100340
	Duplex Patch Cable SC-ST, Multi Mode 62,5/125 µm	3,00 mm	10,0 m	18-100350

# PRE-ASSEMBLED PATCH CABLES

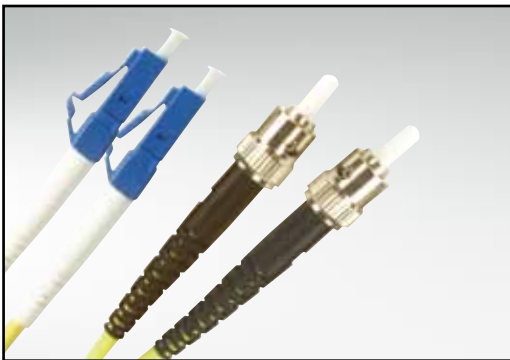
## Duplex Patch Cables



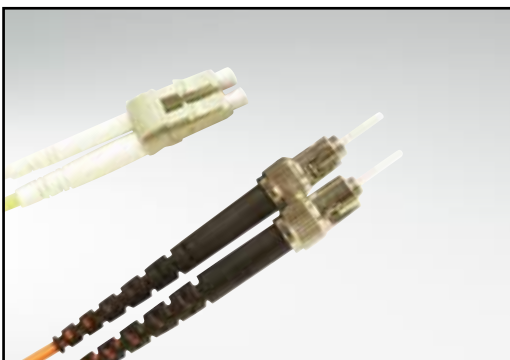
DESCRIPTION	Ø CABLE	LENGTH	ORDER NUMBER
Duplex Patch Cable SC-SC, Single Mode 9/125 µm	3,00 mm	1,0 m	18-100410
Duplex Patch Cable SC-SC, Single Mode 9/125 µm	3,00 mm	2,0 m	18-100420
Duplex Patch Cable SC-SC, Single Mode 9/125 µm	3,00 mm	3,0 m	18-100430
Duplex Patch Cable SC-SC, Single Mode 9/125 µm	3,00 mm	5,0 m	18-100440
Duplex Patch Cable SC-SC, Single Mode 9/125 µm	3,00 mm	10,0 m	18-100450



DESCRIPTION	Ø CABLE	LENGTH	ORDER NUMBER
Duplex Patch Cable SC-SC, Multi Mode 50/125 µm	3,00 mm	1,0 m	18-100460
Duplex Patch Cable SC-SC, Multi Mode 50/125 µm	3,00 mm	2,0 m	18-100470
Duplex Patch Cable SC-SC, Multi Mode 50/125 µm	3,00 mm	3,0 m	18-100480
Duplex Patch Cable SC-SC, Multi Mode 50/125 µm	3,00 mm	5,0 m	18-100490
Duplex Patch Cable SC-SC, Multi Mode 50/125 µm	3,00 mm	10,0 m	18-100500
Duplex Patch Cable SC-SC, Multi Mode 62,5/125 µm	3,00 mm	1,0 m	18-100510
Duplex Patch Cable SC-SC, Multi Mode 62,5/125 µm	3,00 mm	2,0 m	18-100520
Duplex Patch Cable SC-SC, Multi Mode 62,5/125 µm	3,00 mm	3,0 m	18-100530
Duplex Patch Cable SC-SC, Multi Mode 62,5/125 µm	3,00 mm	5,0 m	18-100540
Duplex Patch Cable SC-SC, Multi Mode 62,5/125 µm	3,00 mm	10,0 m	18-100550



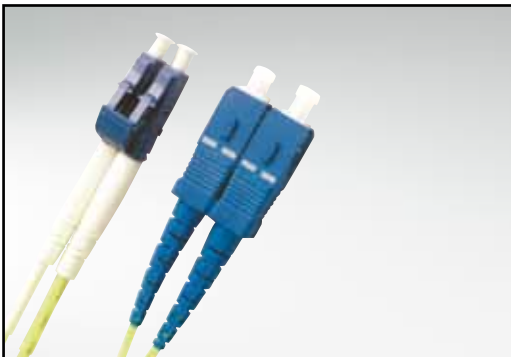
DESCRIPTION	Ø CABLE	LENGTH	ORDER NUMBER
Duplex Patch Cable LC-ST, Single Mode 9/125 µm	2,00 mm	1,0 m	18-100610
Duplex Patch Cable LC-ST, Single Mode 9/125 µm	2,00 mm	2,0 m	18-100620
Duplex Patch Cable LC-ST, Single Mode 9/125 µm	2,00 mm	3,0 m	18-100630
Duplex Patch Cable LC-ST, Single Mode 9/125 µm	2,00 mm	5,0 m	18-100640
Duplex Patch Cable LC-ST, Single Mode 9/125 µm	2,00 mm	10,0 m	18-100650




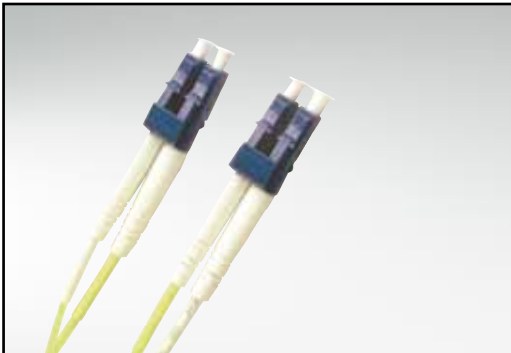
DESCRIPTION	Ø CABLE	LENGTH	ORDER NUMBER
Duplex Patch Cable LC-ST, Multi Mode 50/125 µm	2,00 mm	1,0 m	18-100660
Duplex Patch Cable LC-ST, Multi Mode 50/125 µm	2,00 mm	2,0 m	18-100670
Duplex Patch Cable LC-ST, Multi Mode 50/125 µm	2,00 mm	3,0 m	18-100680
Duplex Patch Cable LC-ST, Multi Mode 50/125 µm	2,00 mm	5,0 m	18-100690
Duplex Patch Cable LC-ST, Multi Mode 50/125 µm	2,00 mm	10,0 m	18-100700
Duplex Patch Cable LC-ST, Multi Mode 62,5/125 µm	2,00 mm	1,0 m	18-100710
Duplex Patch Cable LC-ST, Multi Mode 62,5/125 µm	2,00 mm	2,0 m	18-100720
Duplex Patch Cable LC-ST, Multi Mode 62,5/125 µm	2,00 mm	3,0 m	18-100730
Duplex Patch Cable LC-ST, Multi Mode 62,5/125 µm	2,00 mm	5,0 m	18-100740
Duplex Patch Cable LC-ST, Multi Mode 62,5/125 µm	2,00 mm	10,0 m	18-100750

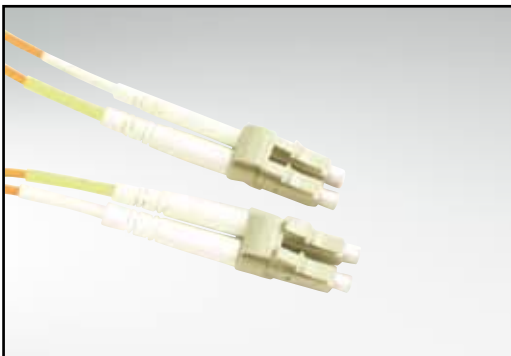
# PRE-ASSEMBLED PATCH CABLES

## Duplex Patch Cables

	DESCRIPTION	Ø CABLE	LENGTH	ORDER NUMBER
	Duplex Patch Cable LC-SC, Single Mode 9/125 µm	2,00 mm	1,0 m	18-100810
	Duplex Patch Cable LC-SC, Single Mode 9/125 µm	2,00 mm	2,0 m	18-100820
	Duplex Patch Cable LC-SC, Single Mode 9/125 µm	2,00 mm	3,0 m	18-100830
	Duplex Patch Cable LC-SC, Single Mode 9/125 µm	2,00 mm	5,0 m	18-100840
	Duplex Patch Cable LC-SC, Single Mode 9/125 µm	2,00 mm	10,0 m	18-100850

	DESCRIPTION	Ø CABLE	LENGTH	ORDER NUMBER
	Duplex Patch Cable LC-SC, Multi Mode 50/125 µm	2,00 mm	1,0 m	18-100860
	Duplex Patch Cable LC-SC, Multi Mode 50/125 µm	2,00 mm	2,0 m	18-100870
	Duplex Patch Cable LC-SC, Multi Mode 50/125 µm	2,00 mm	3,0 m	18-100880
	Duplex Patch Cable LC-SC, Multi Mode 50/125 µm	2,00 mm	5,0 m	18-100890
	Duplex Patch Cable LC-SC, Multi Mode 50/125 µm	2,00 mm	10,0 m	18-100900
	Duplex Patch Cable LC-SC, Multi Mode 62,5/125 µm	2,00 mm	1,0 m	18-100910
	Duplex Patch Cable LC-SC, Multi Mode 62,5/125 µm	2,00 mm	2,0 m	18-100920
	Duplex Patch Cable LC-SC, Multi Mode 62,5/125 µm	2,00 mm	3,0 m	18-100930
	Duplex Patch Cable LC-SC, Multi Mode 62,5/125 µm	2,00 mm	5,0 m	18-100940
	Duplex Patch Cable LC-SC, Multi Mode 62,5/125 µm	2,00 mm	10,0 m	18-100950

	DESCRIPTION	Ø CABLE	LENGTH	ORDER NUMBER
	Duplex Patch Cable LC-LC, Single Mode 9/125 µm	2,00 mm	1,0 m	18-101100
	Duplex Patch Cable LC-LC, Single Mode 9/125 µm	2,00 mm	2,0 m	18-101110
	Duplex Patch Cable LC-LC, Single Mode 9/125 µm	2,00 mm	3,0 m	18-101120
	Duplex Patch Cable LC-LC, Single Mode 9/125 µm	2,00 mm	5,0 m	18-101130
	Duplex Patch Cable LC-LC, Single Mode 9/125 µm	2,00 mm	10,0 m	18-101140

	DESCRIPTION	Ø CABLE	LENGTH	ORDER NUMBER
	Duplex Patch Cable LC-LC, Multi Mode 50/125 µm	2,00 mm	1,0 m	18-101150
	Duplex Patch Cable LC-LC, Multi Mode 50/125 µm	2,00 mm	2,0 m	18-101160
	Duplex Patch Cable LC-LC, Multi Mode 50/125 µm	2,00 mm	3,0 m	18-101170
	Duplex Patch Cable LC-LC, Multi Mode 50/125 µm	2,00 mm	5,0 m	18-101180
	Duplex Patch Cable LC-LC, Multi Mode 50/125 µm	2,00 mm	10,0 m	18-101190
	Duplex Patch Cable LC-LC, Multi Mode 62,5/125 µm	2,00 mm	1,0 m	18-101200
	Duplex Patch Cable LC-LC, Multi Mode 62,5/125 µm	2,00 mm	2,0 m	18-101210
	Duplex Patch Cable LC-LC, Multi Mode 62,5/125 µm	2,00 mm	3,0 m	18-101220
	Duplex Patch Cable LC-LC, Multi Mode 62,5/125 µm	2,00 mm	5,0 m	18-101230
	Duplex Patch Cable LC-LC, Multi Mode 62,5/125 µm	2,00 mm	10,0 m	18-101240

# PRE-ASSEMBLED PIGTAILS

## Pigtails



DESCRIPTION	Ø CABLE	LENGTH	ORDER NUMBER
Pigtails ST, Single Mode 9/125 µm	0,9 mm	1,0 m	18-102190
Pigtails ST, Single Mode 9/125 µm	0,9 mm	2,0 m	18-102200
Pigtails ST, Multi Mode 50/125 µm	0,9 mm	1,0 m	18-102210
Pigtails ST, Multi Mode 50/125 µm	0,9 mm	2,0 m	18-102220
Pigtails ST, Multi Mode 62,5/125 µm	0,9 mm	1,0 m	18-102230
Pigtails ST, Multi Mode 62,5/125 µm	0,9 mm	2,0 m	18-102240



DESCRIPTION	Ø CABLE	LENGTH	ORDER NUMBER
Pigtails SC, Single Mode 9/125 µm	0,9 mm	1,0 m	18-102270
Pigtails SC, Single Mode 9/125 µm	0,9 mm	2,0 m	18-102280
Pigtails SC, Multi Mode 50/125 µm	0,9 mm	1,0 m	18-102290
Pigtails SC, Multi Mode 50/125 µm	0,9 mm	2,0 m	18-102300
Pigtails SC, Multi Mode 62,5/125 µm	0,9 mm	1,0 m	18-102310
Pigtails SC, Multi Mode 62,5/125 µm	0,9 mm	2,0 m	18-102320



DESCRIPTION	Ø CABLE	LENGTH	ORDER NUMBER
Pigtails FC, Single Mode 9/125 µm	0,9 mm	1,0 m	18-102350
Pigtails FC, Single Mode 9/125 µm	0,9 mm	2,0 m	18-102360
Pigtails FC, Multi Mode 50/125 µm	0,9 mm	1,0 m	18-102370
Pigtails FC, Multi Mode 50/125 µm	0,9 mm	2,0 m	18-102380
Pigtails FC, Multi Mode 62,5/125 µm	0,9 mm	1,0 m	18-102390
Pigtails FC, Multi Mode 62,5/125 µm	0,9 mm	2,0 m	18-102400



DESCRIPTION	Ø CABLE	LENGTH	ORDER NUMBER
Pigtails LC, Single Mode 9/125 µm	0,9 mm	1,0 m	18-102430
Pigtails LC, Single Mode 9/125 µm	0,9 mm	2,0 m	18-102440
Pigtails LC, Multi Mode 50/125 µm	0,9 mm	1,0 m	18-102450
Pigtails LC, Multi Mode 50/125 µm	0,9 mm	2,0 m	18-102460
Pigtails LC, Multi Mode 62,5/125 µm	0,9 mm	1,0 m	18-102470
Pigtails LC, Multi Mode 62,5/125 µm	0,9 mm	2,0 m	18-102480





Internet  
[www.conec.com](http://www.conec.com)

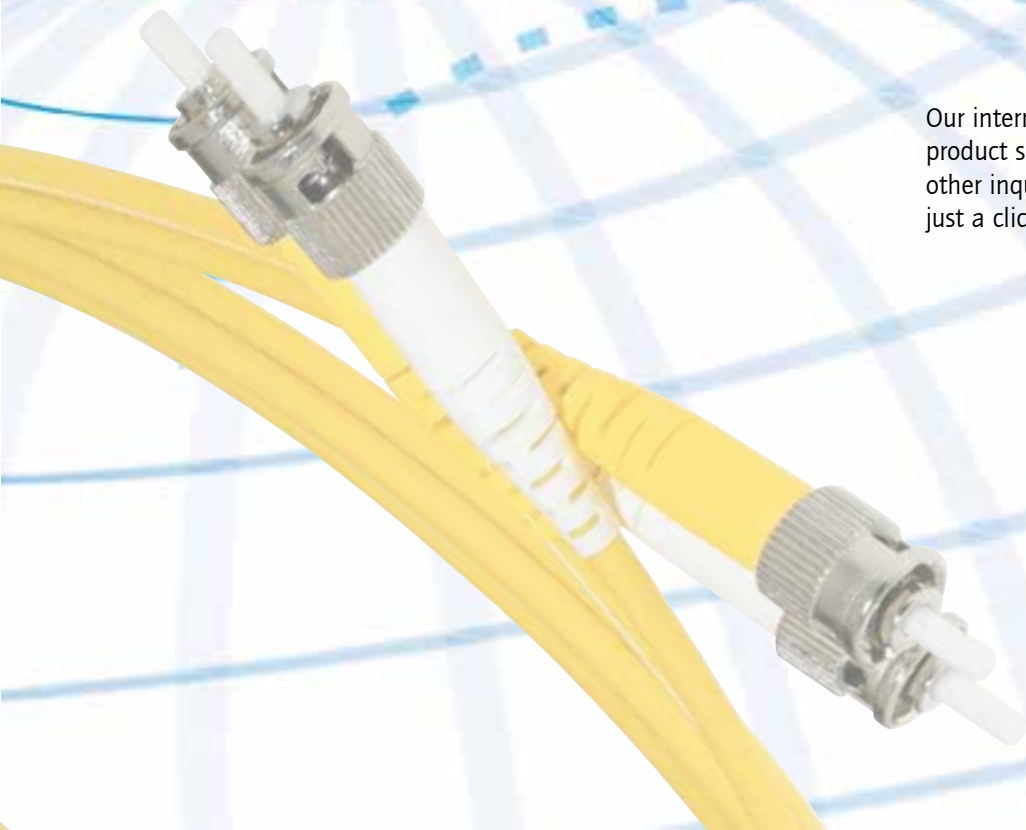
---



Our web site is the fastest and economical way to access our complete product line, detail information on the company, technical specifications and product drawings are shown.

All of our manufacturing locations, sales offices and representatives worldwide are listed and are easy accessible.

Our internet connection allows you to request product samples, placement of orders or make other inquires. New products, company news are just a click away. Why not contact us today?





**CONEC**  
Elektronische Bauelemente GmbH  
Ostenfeldmark 16  
59557 Lippstadt  
Tel. +49 2941 765-0  
Fax +49 2941 76565  
E-Mail info@conec.de  
www.conec.com

**CONEC Corporation**  
125 Sun Pac Blvd.  
Brampton Ontario  
Canada L6S 5Z6  
Tel. +1 905 790 2200  
Fax +1 905 790 2201  
E-Mail info@conec.com

**American CONEC Corporation**  
343 Technology Drive  
Garner, NC, USA 27529  
Tel. +1 919 460 8800  
Fax +1 919 460 0141  
E-Mail info@conec.com

**CONEC (UK) Limited**  
Ringway House East  
Kelvin Road  
Newbury, Berkshire  
RG14 2DB  
Tel. +44 1635 3692  
Fax +44 1635 36925  
E-Mail info@conec.co.uk

**CONEC Agente Comercial**  
C/ Salvador Espriu 75, 3-1  
08005 Barcelona  
Tel: +34 935 398942  
Fax. +34 93  
E-Mail info@conec-hispana.com

**CONEC Polska Sp. zo.o**  
ul.Szmaragdowa 10  
52-215 Wroclaw  
Tel. +48 713643002  
Fax +48 713643010  
E-Mail info@conec.pl

**CONEC Nordic Region**  
Lundtoftevej 264 C  
2800 Kgs. Lyngby  
Denmark  
Tel. +45 4593 5533  
Fax +45 4593 5523  
E-Mail info@conec.dk

**CONEC France SARL**  
202 Rue de Chevreuils  
30320 Poulx  
Tel. +33 9 75267217  
Fax +33 4 66570916  
E-Mail info@conec.fr

**CONEC (Shanghai)**  
Int. Trading Co., Ltd.  
Rm. 715 Yongding Bldg.  
No. 3388 Gong He Xin Rd.  
200436 Shanghai  
Tel. +86 21 66300930  
Fax +86 21 66300911  
E-Mail info@conec.cn

**CONEC s.r.o.**  
Loucka 119  
76325 Ujezd  
Czech Republic  
Tel. +420 0577 350132  
Fax +420 0577 350134  
E-Mail info@conec.cz

**CONEC GmbH Schatz Electronic**  
Schubertstr. 14a  
99096 Erfurt  
Tel. +49 361 340110  
Fax +49 361 3401111  
E-Mail info@schatz-electronic.de



#### **THE COMPANY**

CONEC Elektronische Bauelemente GmbH was founded 1978 in Lippstadt, Germany. Currently more than 400 employees work at the company production sites. Precision connectors for high-end applications are produced at production plants in Lippstadt (Germany), Brampton (Canada), Garner (USA) and Loucka (Czech Republic).

#### **THE COMPETENCE**

CONEC is an ISO/TS 16949:2002 certified company and is a qualified vendor to many well-known telecommunications, automotive, avionics and industrial electronics manufacturers. The company maintains a very high degree of vertical integration to ensure that it can react quickly to customer expectations and changes in the market. In-house tool making capability gives CONEC ample flexibility to quickly build or modify tools to accommodate customer-specific solutions.

#### **THE QUALITY**

The company is one of the world market leaders in filter connectors, combination D-SUB connectors and water resistant connectors.

#### **THE FLEXIBILITY**

The company also produces standard D-SUB, DIN/EN, coax, fiber optics and RJ45 connectors as well as PICMG-compliant connectors and M12 and M8 circular connectors. Besides the broad product range, customers also value the company's ability to provide customer-specific solutions.

[www.conec.com](http://www.conec.com)