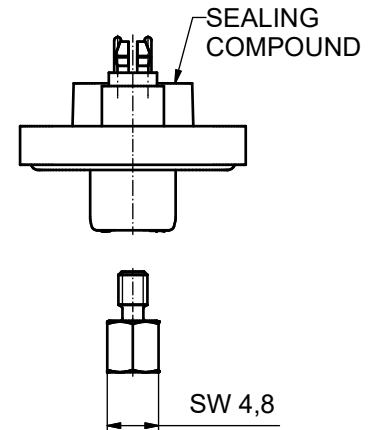
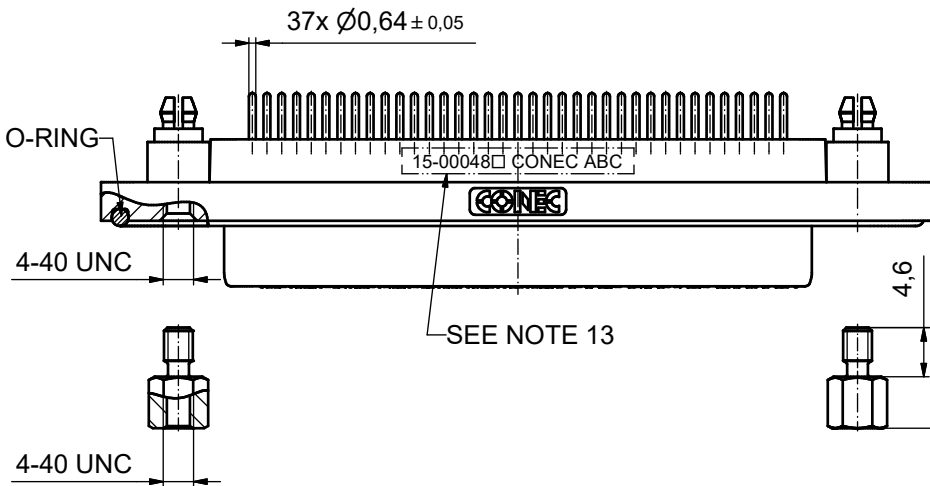
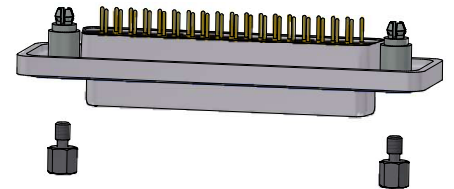
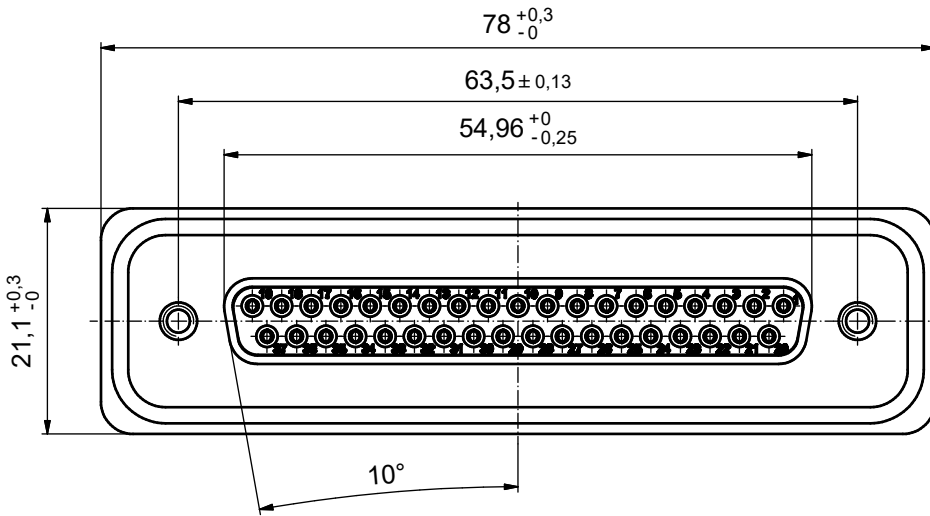
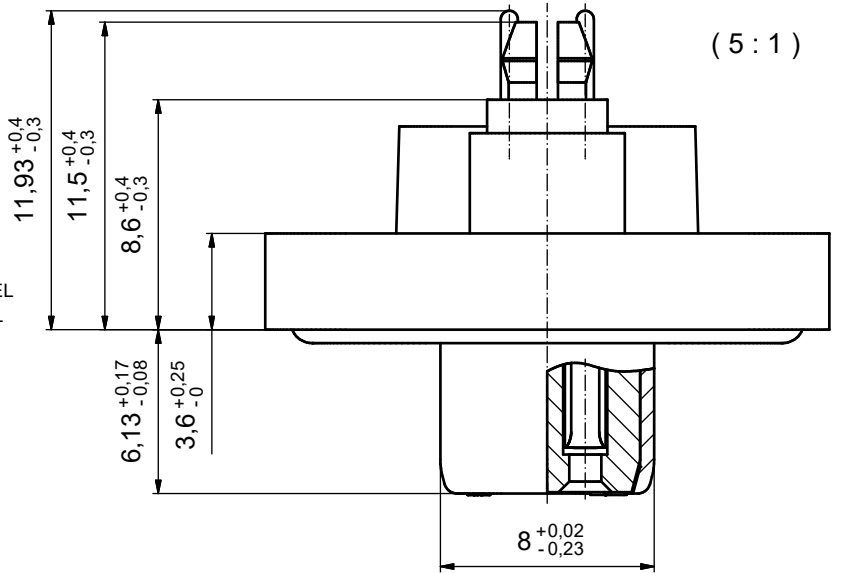


NOTES:

1. FOR WAVESOLDERING (SOLDER BATH TEMPERATURE 265°C FOR 8 SEC. AND SOLDER PREHEAT 150°C FOR 180 SEC.)
2. IP RATING: IP 67
3. SEALED TO WITHSTAND PRESSURE UP TO 1,45 PSI FOR 30 MINUTES AFTER HIGH TEMPERATURE EXPOSURE
4. METALSHELL: ZINC DIE CAST;
min. 50µin NICKEL PLATING over COPPER
5. INSULATORS: PBT GF UL 94 V-0, BLACK
6. O-RING: SILICONE PER ASTM D2000 70 SHORE A
7. SEALING COMPOUND: EPOXY RESIN UL 94 V-0; BLACK
8. CONTACTS: COPPER ALLOY
PLATING (SEE PART NO):
 PLEASE ADD 1 for 30µin HARD GOLD over min. 50µin NICKEL
 PLEASE ADD 3 for 8µin HARD GOLD over min. 50µin NICKEL
9. REAR SPACER CLIPS: COPPER ALLOY;
min. 200µin TIN over 80µin NICKEL
PCB-HOLE: $\phi 3,1 \pm 0,1$; PCB THICKNESS 1,6mm
10. HEXLOCKING SCREWS: STAINLESS STEEL
11. PCB-HOLE DRILLINGS and RECOMMENDED PANEL CUT-OUT ON SHEET 2
12. RECOMMENDED TORQUE FOR MOUNTING SCREW 35Ncm (3.1 in.LB) / max.67Ncm (6 in.LB)
13. CONNECTOR IS PART MARKED: 15-00048 CONEC ABC

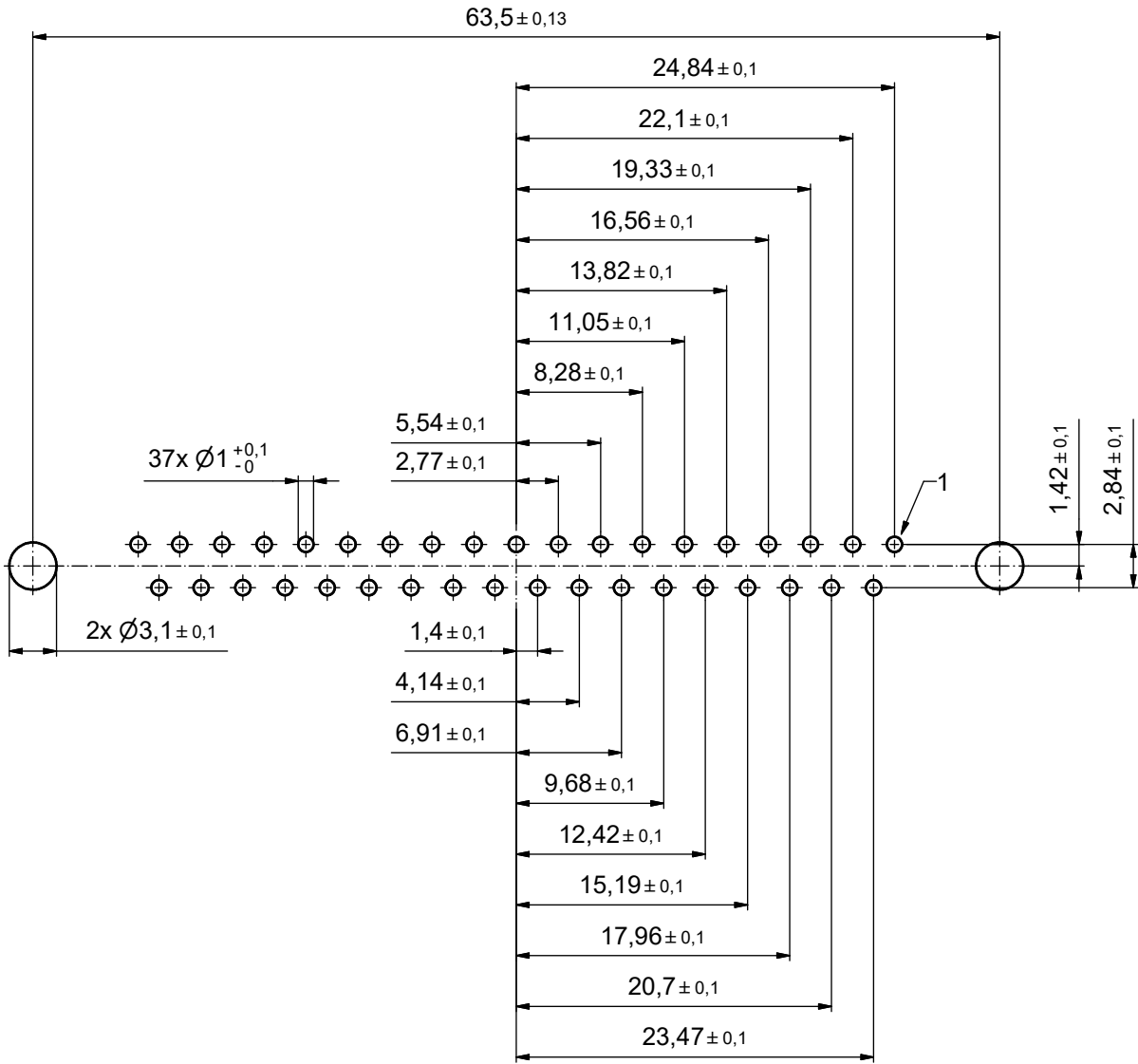


AT ALL TIMES WATER RESISTANT CONNECTORS NOT IN USE SHOULD BE COVERED WITH A CONEC WATER RESISTANT CAP OR WATER TIGHT HOOD.

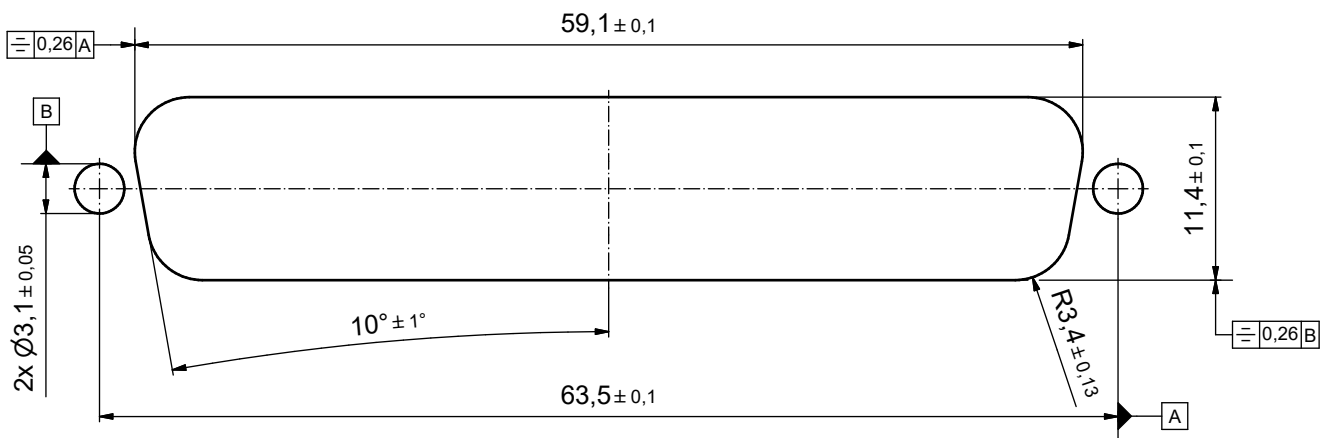
Index: b Ä3435 23.09.2009 HS	Scale/Maßstab: 2:1 (5:1)	dim. in mm		D-SUB FEMALE 37pos. SOLDER PIN STRAIGHT with rear spacer clip and hexlocking screw		dwg no / Z.-nr.: 15K1A309	DIN- A3
		Date/Datum	Name				
		drawn/ ges.	17.10.2008				
		appd./ gepr.	21.10.2008	Fischer			
		Amphenol CONEC		15-00048 (see note 8)		1 / 2	

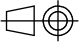
The reproduction, distribution and sale of this document as well as the communication of its contents to others without express authorization is prohibited. Offenders will be held liable for the payment of damages. For further information on copyright law please contact the publisher.

P.C.B. HOLE DRILLINGS



RECOMMENDED PANEL CUT-OUT



Index: b Ä3435 23.09.2009 HS	Scale/Maßstab: 2:1 (5:1)	 dim. in mm	D-SUB FEMALE 37pos. SOLDER PIN STRAIGHT <i>with rear spacer clip and hexlocking screw</i>		DIN-A3 2 / 2	
			Date/Datum	Name		dwg no / Z.-nr.: 15K1A309
			drawn/ gez.	17.10.2008 Petker		
		appd./ gepr.	21.10.2008 Fischer			

The reproduction, distribution and utilization of this document as well as the communication of its contents to others without express authorization is prohibited. Offenders will be held liable for the payment of damages. For further information on our copyright and patent rights please contact our Intellectual Property and Patent Department.