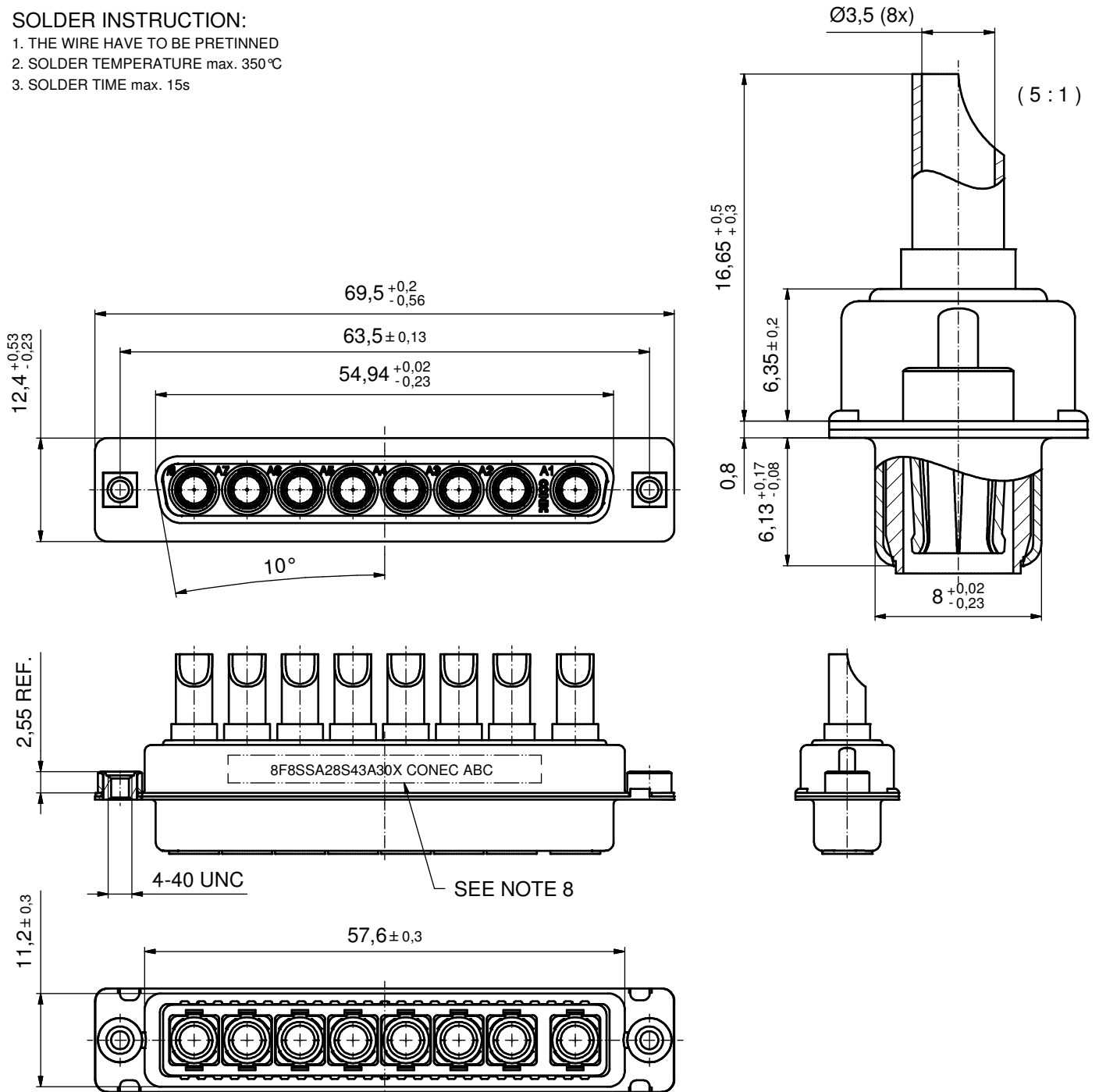


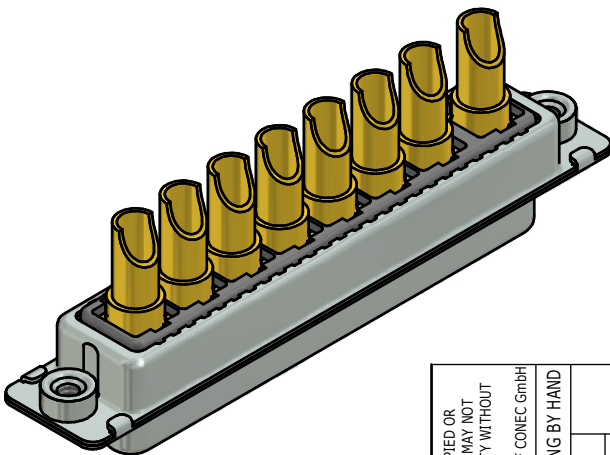
SOLDER INSTRUCTION:

1. THE WIRE HAVE TO BE PRETINNED
2. SOLDER TEMPERATURE max. 350°C
3. SOLDER TIME max. 15s



NOTES:

1. METAL SHELLS: STEEL; min. 315µm TIN over 40-80µm NICKEL
2. INSULATORS: PBT GF UL 94 V-0, BLACK
3. HIGH POWER CONTACTS 30A: COPPER ALLOY
PLATING MATING AREA: GOLD FLASH over NICKEL
PLATING TERMINATION SIDE: GOLD FLASH over NICKEL
SOLDER CUP ACCEPTS CABLE AWG 10-12
4. THREADED INSERTS: COPPER ALLOY; min. 200µm TIN over 80µm NICKEL
5. COLLARS: COPPER ALLOY; min. 200µm TIN over 80µm NICKEL
6. CAPACITANCE: 100nF ± 20%
7. DIELECTRIC WITHSTANDING VOLTAGE: 707 VDC
8. CONNECTOR IS PART MARKED: 8F8SSA28S43A30X CONEC ABC



Directive 2002/95/EC RoHS compliant

THIS DRAWING MAY NOT BE COPIED OR REPRODUCED IN ANY WAY, AND MAY NOT BE PASSED ON TO A THIRD PARTY WITHOUT WRITTEN PERMISSION. OWNERSHIP AND COPYRIGHT OF CONEC GmbH DO NOT ALTER CAD DRAWING BY HAND	tolerance		dim. in mm	scale: 2:1 (5:1)				
				material: SEE NOTES				
	drawn	05.03.13	Henneboel		title: D-SUB FILTER COMB. FEMALE 8W8SS SOLDER CUP with threaded insert			
	appd.	05.03.13	Fischer					
	norm							
	d-old							
	rev.	a	Original			dwg no:	24K1A1430	DIN-A3
	description		date				sh: 1	
	part no:		8F8SSA28S43A30X					