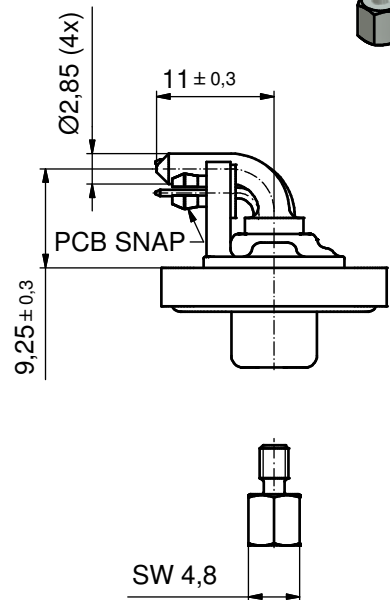
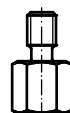
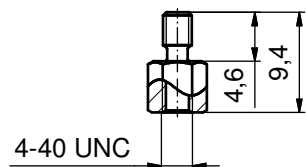
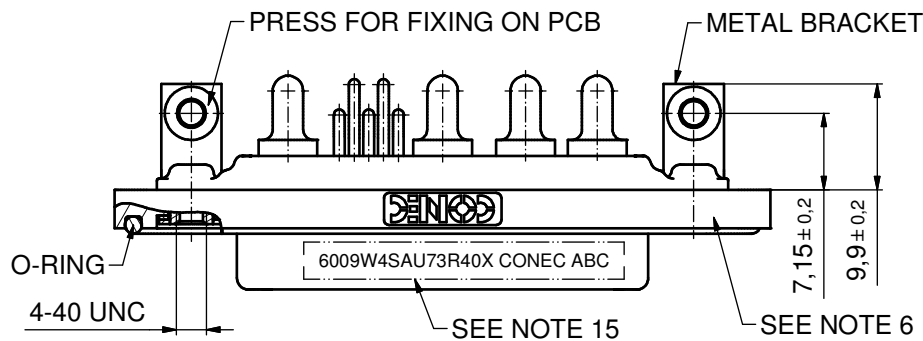
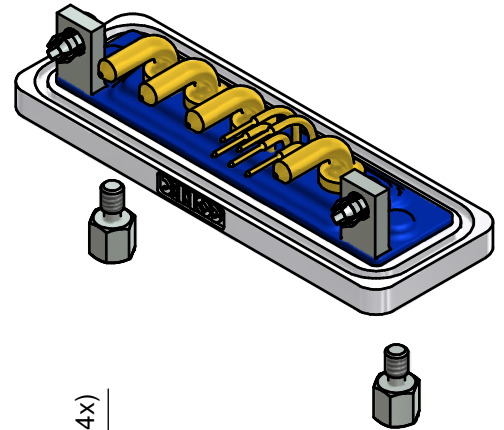
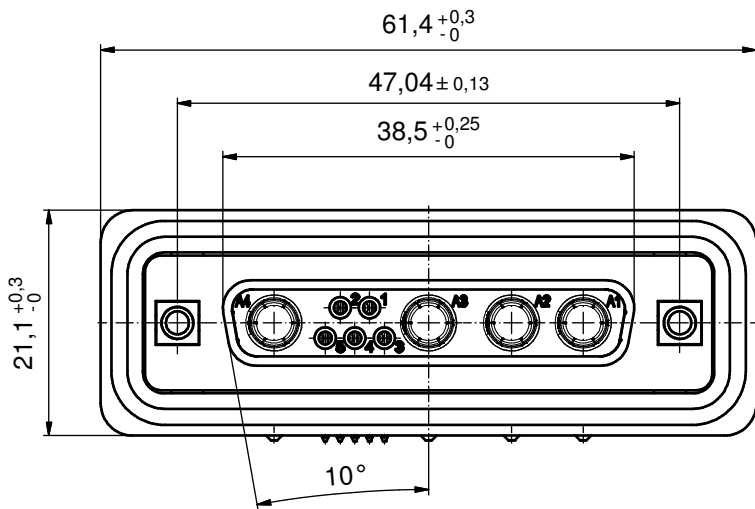
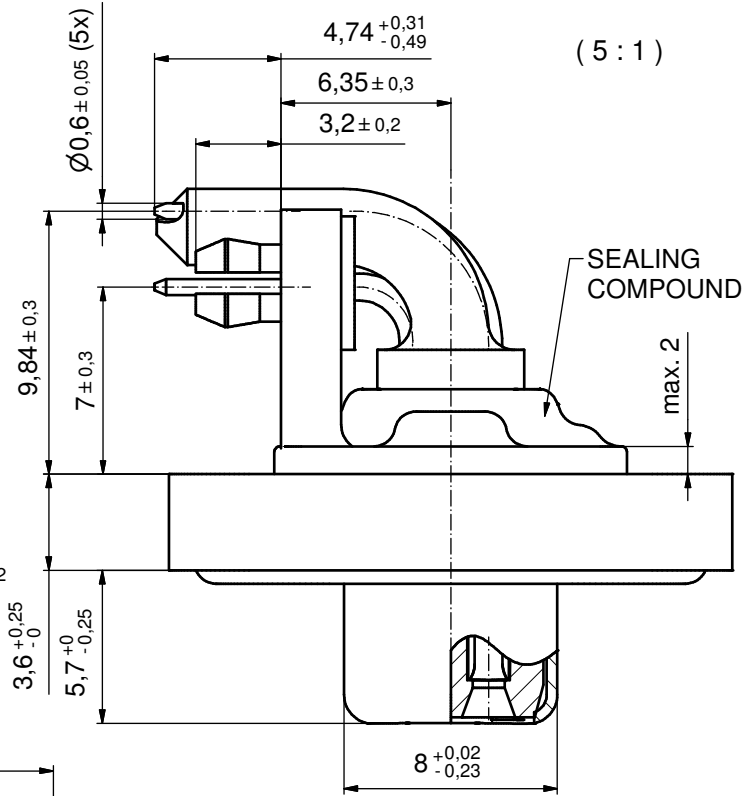


NOTES:

1. FOR WAVESOLDERING (SOLDER BATH TEMPERATURE 240°C FOR 5 SEC. AND SOLDER PREHEAT 120°C FOR 120 SEC.)
2. METALSHELLS: COPPER ALLOY; min. 315µin TIN over 40-80µin NICKEL
3. INSULATORS: PBT GF UL 94 V-0; GREEN
4. SIGNAL CONTACTS: COPPER ALLOY
PLATING: GOLD FLASH over NICKEL
5. HIGH POWER CONTACTS 20A: COPPER ALLOY
PLATING MATING AREA: GOLD FLASH over NICKEL
PLATING TERMINATION SIDE: 160-240µin TIN over 80µin NICKEL
6. FRAME: ZINC DIE CAST; NICKEL PLATED
7. METAL BRACKETS:
ZINC DIE CAST; 300µin COPPER/40-120µin NICKEL/120-200µin TIN
8. THREADED INSERTS: COPPER ALLOY; min. 200µin TIN over 80µin NICKEL
9. PCB-SNAPS: COPPER ALLOY; min 20µin TIN over 80µin NICKEL
PCB-HOLE: $\varnothing 3.1 \pm 0.1$; PCB THICKNESS 1.6mm
10. HEXLOCKING SCREWS: STAINLESS STEEL
11. O-RING: SILICON; BLUE
12. SEALING COMPOUND: PUR; BLUE
13. P.C.B. HOLE DRILLINGS AND RECOMMENDED PANEL CUT-OUT ON SHEET 2
14. RECOMMENDED TORQUE
FOR MOUNTING SCREW 35N cm (3.1in.LB) / max. 40N cm (3.5 in.LB)
15. CONNECTOR IS PART MARKED: 6009W4SAU73R40X CONEC ABC

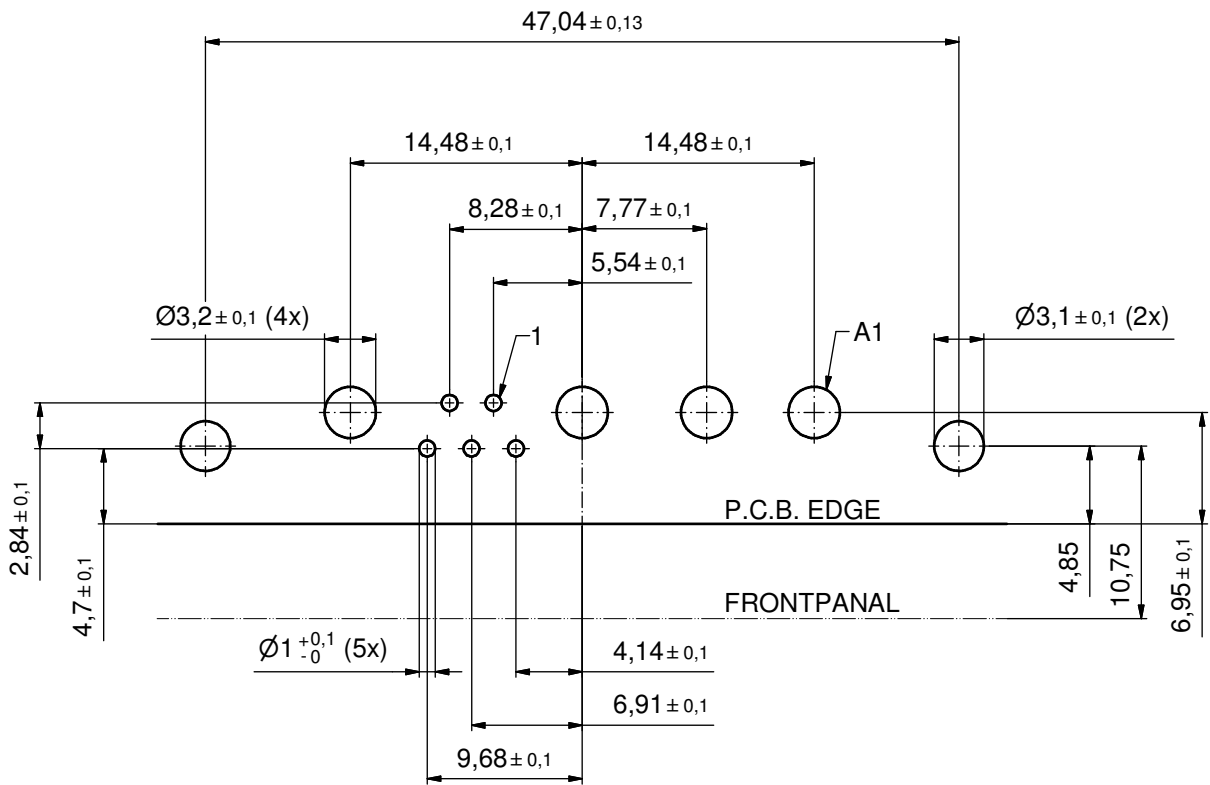


AT ALL TIMES WATER RESISTANT CONNECTORS NOT IN USE SHOULD BE COVERED WITH A CONEC WATER RESISTANT CAP OR WATER TIGHT HOOD.

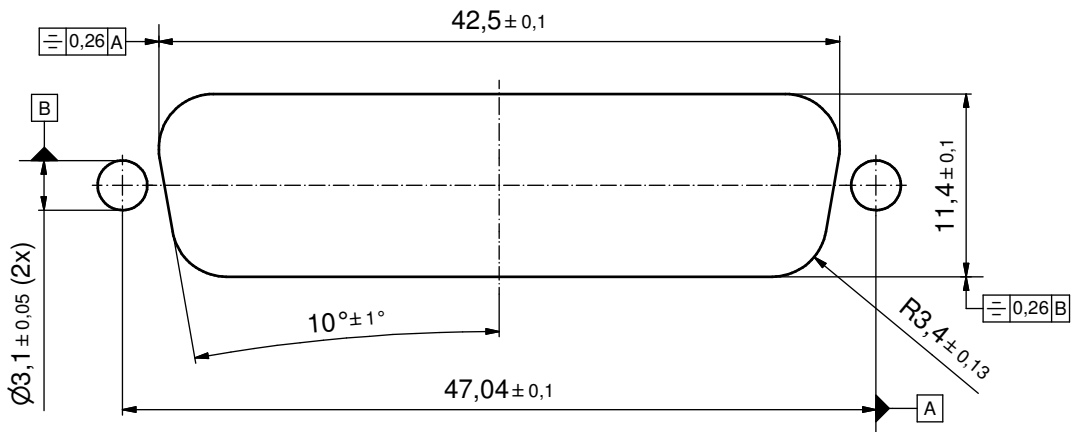
Directive 2002/95/EC RoHS compliant

THIS DRAWING MAY NOT BE COPIED OR REPRODUCED IN ANY WAY, AND MAY NOT BE PASSED ON TO A THIRD PARTY WITHOUT WRITTEN PERMISSION. OWNERSHIP AND COPYRIGHT OF CONEC GmbH DO NOT ALTER CAD DRAWING BY HAND	tolerance		dim. in mm		scale: 2:1 (5:1)		
					material: SEE NOTES		
			date	name		title:	
			drawn	24.08.12	Henneboel		D-SUB COMBINATION FEMALE 9W4S
			appd.	24.08.12	Fischer		
		norm		d-old		dwg no:	
a	Original					15K1A1141	
rev.	description	date	name			part no: 6009W4SAU73R40X	DIN-A3 sh: 1/2

P.C.B. HOLE DRILLINGS
(P.C.B. TOP SIDE)



RECOMMENDED PANEL CUT-OUT



THIS DRAWING MAY NOT BE COPIED OR REPRODUCED IN ANY WAY, AND MAY NOT BE PASSED ON TO A THIRD PARTY WITHOUT WRITTEN PERMISSION. OWNERSHIP AND COPYRIGHT OF CONEC GmbH DO NOT ALTER CAD DRAWING BY HAND				tolerance		scale: 3:1	
				date	name	material: see sheet 1	
				drawn	24.08.12	Henneboel	
				appd.	24.08.12	Fischer	
				norm			
			d-old			title: P.C.B. HOLE DRILLINGS RECOMMENDED PANEL CUT-OUT D-SUB COMBINATION FEMALE 9W4S	
rev.	a	Original	CONEC [®]			dwg no:	DIN-A3
description	date	name				15K1A1141	sh: 2/2
						part no:	SEE SHEET 1