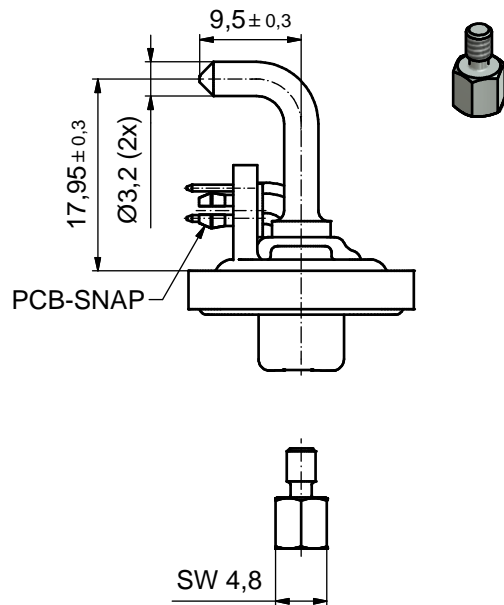
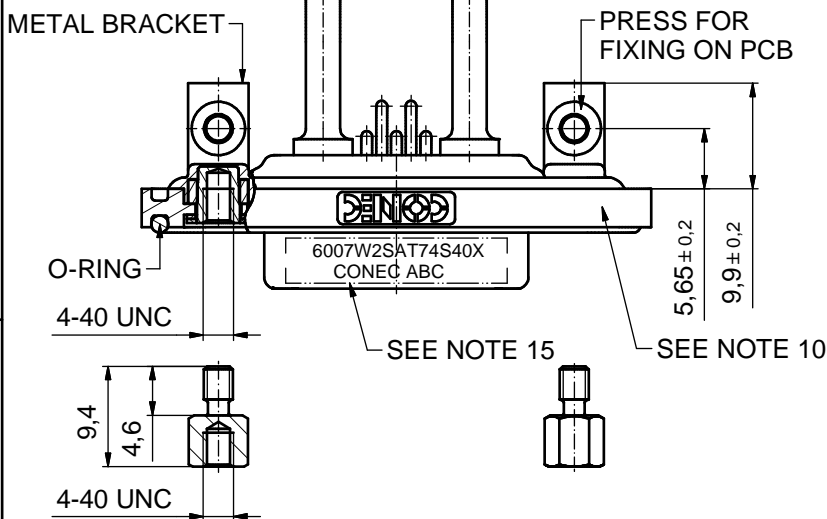
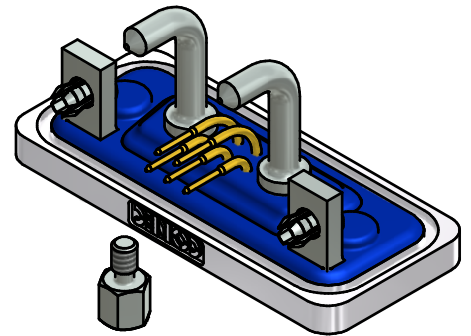
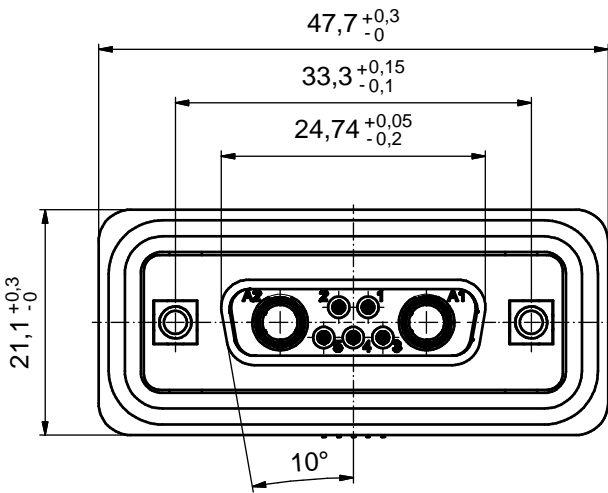
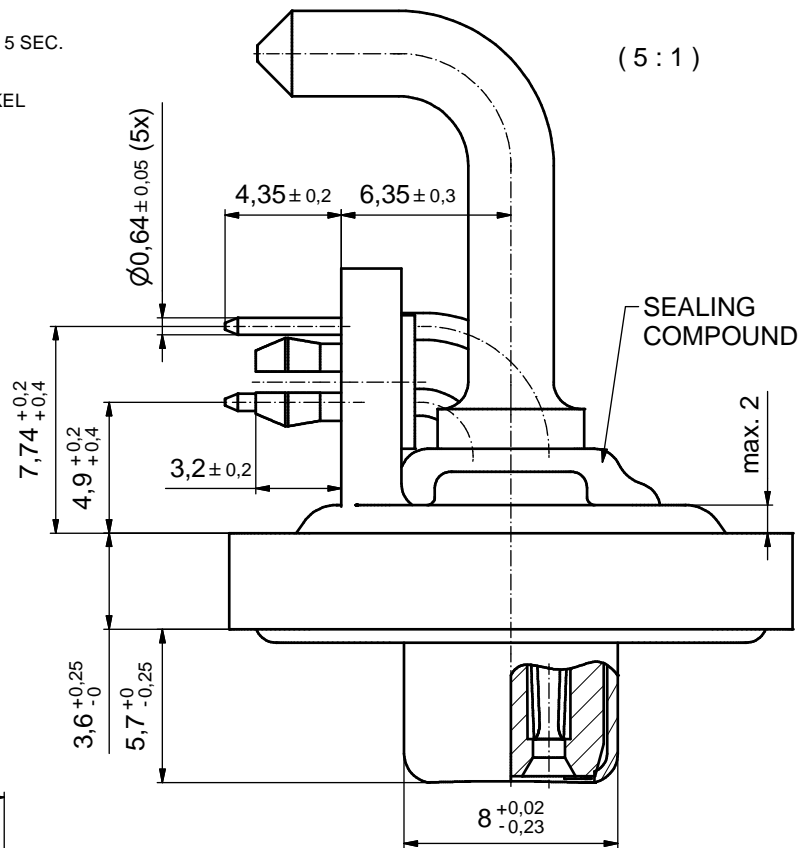


**NOTES:**

- FOR WAVESOLDERING (SOLDER BATH TEMPERATURE 240°C FOR 5 SEC. AND SOLDER PREHEAT 120°C FOR 120 SEC.)
- METALSHELLS: COPPER ALLOY; min. 315µin TIN over 40-80µin NICKEL
- INSULATOR: PBT GF UL 94 V-0, GREEN
- SIGNAL CONTACTS: COPPER ALLOY  
PLATING: GOLD FLASH over NICKEL
- HIGH POWER CONTACTS 30A: COPPER ALLOY  
PLATING MATING AREA: GOLD FLASH over NICKEL  
PLATING TERMINATION SIDE: 160-240µin TIN over 80µin NICKEL
- METAL BRACKETS: ZINC DIE CAST;  
300µin COPPER/40-120µin NICKEL/120-200µin TIN
- THREADED INSERTS: COPPER ALLOY;  
min. 200µin TIN over 80µin NICKEL
- PCB-SNAPS: COPPER ALLOY; min 20µin TIN over 80µin NICKEL  
PCB-HOLE:  $\varnothing 3.1 \pm 0.1$ ; PCB THICKNESS 1.6mm
- HEXLOCKING SCREW: STAINLESS STEEL
- FRAME: ZINC DIE CAST; NICKEL PLATED
- O-RING: SILICON; BLUE
- SEALING COMPOUND: PUR; BLUE
- P.C.B. HOLE DRILLINGS and RECOMMENDED PANEL CUT-OUT ON SHEET 2
- RECOMMENDED TORQUE FOR MOUNTING SCREW  
35N cm (3.1in.LB)/max. 40N cm (3.5 in.LB)
- CONNECTOR IS PART MARKED: 6007W2SAT74S40X CONEC ABC



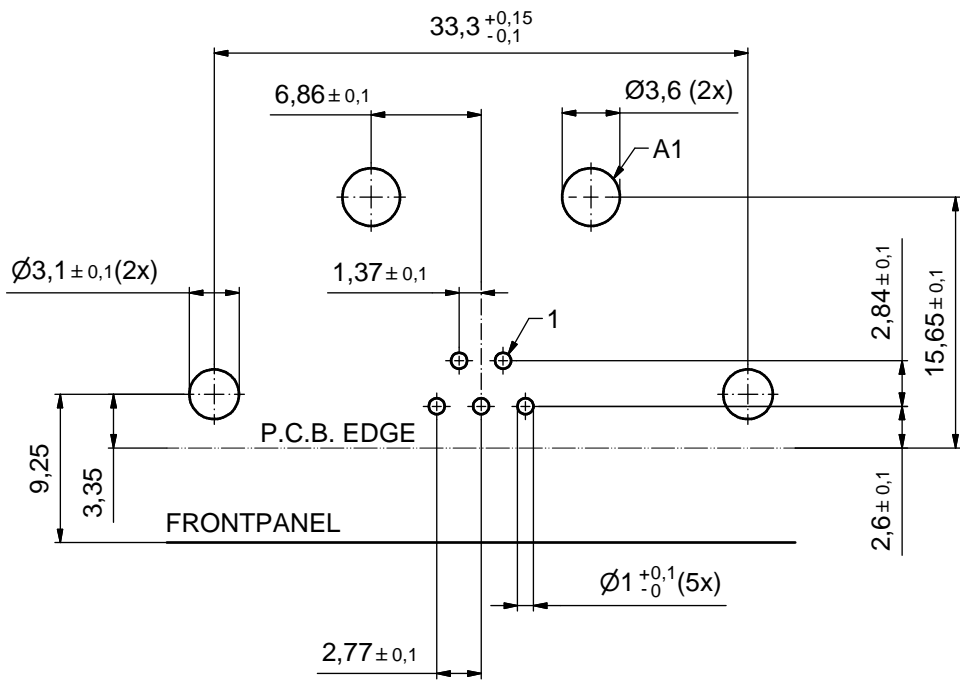
AT ALL TIMES WATER RESISTANT CONNECTORS NOT IN USE SHOULD BE COVERED WITH A CONEC WATER RESISTANT CAP OR WATER TIGHT HOOD.

Directive 2002/95/EC RoHS compliant

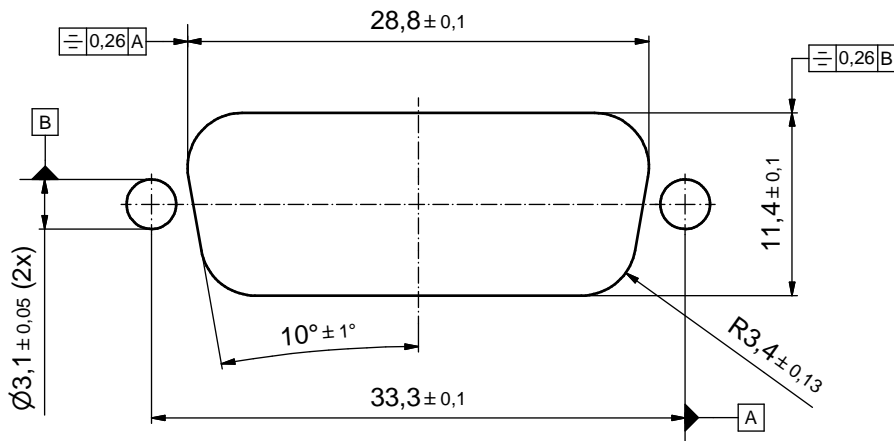
THIS DRAWING MAY NOT BE COPIED OR REPRODUCED IN ANY WAY, AND MAY NOT BE PASSED ON TO A THIRD PARTY WITHOUT WRITTEN PERMISSION. OWNERSHIP AND COPYRIGHT OF CONEC GmbH DO NOT ALTER CAD DRAWING BY HAND	tolerance		dim. in mm		scale:	2:1 (5:1)
					material:	see notes
	date	name	title:			
	drawn 08.06.11	Henneboel	D-SUB COMBINATION FEMALE 90°			
appd. 08.06.11	Fischer	7W2S				
norm		with threaded insert, metal bracket, snap, hex bolt				
d-old		dwg no:				
a	Original			15K1A862		DIN-A3
rev.	description			part no:		6007W2SAT74S40X

# P.C.B. HOLE DRILLINGS

( P.C.B. TOP SIDE )



## RECOMMENDED PANEL CUT-OUT



THIS DRAWING MAY NOT BE COPIED OR REPRODUCED IN ANY WAY, AND MAY NOT BE PASSED ON TO A THIRD PARTY WITHOUT WRITTEN PERMISSION. OWNERSHIP AND COPYRIGHT OF CONEC GmbH  DO NOT ALTER CAD DRAWING BY HAND				tolerance		scale: 2:1	
				dim. in mm		material: see sheet 1	
	drawn	08.06.11	Henneboel	title:			
	appd.	08.06.11	Fischer	P.C.B. HOLE DRILLINGS			
	norm			D-SUB COMBINATION FEMALE 90° 7W2S			
	d-old			with threaded insert, metal bracket, snap, hex bolt			
	rev.	a	Original	CONEC®		dwg no: 15K1A862	DIN-A3
	description					sh: 2	
	date					part no: SEE SHEET 1	
	name						