

Technical specification/

Technische Daten:

Rated voltage/ Bemessungsspannung:	48 V AC / 60 V DC
Current rating/ Strombelastbarkeit:	7,5 A at 40 °C 7,5 A bei 40 °C
Degree of protection/ Schutzart:	IP67 in mated condition/ IP67 im gesteckten Zustand
Temperature range	-55 °C ... +125 °C
Connector/ Umgebungstemperatur Stecker:	
Temperature range	fixed/ -40 °C ... +80 °C
Wire/ Umgebungstemperatur Leitung:	fest/ -25 °C ... +80 °C
Mating cycles/ Steckzyklen:	>=100
Wire cross section/ Anschlussquerschnitt:	0.5 mm ²
Housing/ Gehäuse:	Amphenol ATM06-2S, grey / grau Amphenol ATM04-2P, grey / grau

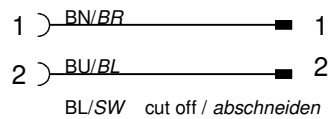
Materials/

Werkstoffe:

Contact/ Kontakt:	Copper alloy/ Kupferlegierung
Contact carrier/ Kontaktträger:	Thermoplastic grey/ Thermoplastik grau
Contact plating/ Kontaktoberfläche:	Ni
Overmolding/ Umspritzung:	TPU, UL 94, black/ schwarz

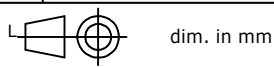
Contact assignment//

Kontaktbelegung:



Part-no./ Art.-Nr.:	Description/ Beschreibung:	Cable length "L" Kabellänge "L":	Cable/ Kabel:
55-01879	ATM06-2S-A - ATM04-2P-A/K1/0.5/0,15m	0,15 m	PUR, black / schwarz 3x 0,5mm ² , Cable / Kabel: 781-K15300
55-01913	ATM06-2S-A - ATM04-2P-A/K1/0.5/0,45m	0,45 m	
55-01708	ATM06-2S-A - ATM04-2P-A/K1/0.5/1m	1 m	
55-01914	ATM06-2S-A - ATM04-2P-A/K1/0.5/1,5m	1,5 m	
55-01803	ATM06-2S-A - ATM04-2P-A/K1/0.5/2m	2 m	
55-01804	ATM06-2S-A - ATM04-2P-A/K1/0.5/3m	3 m	
55-01805	ATM06-2S-A - ATM04-2P-A/K1/0.5/5m	5 m	
55-01806	ATM06-2S-A - ATM04-2P-A/K1/0.5/10m	10 m	
55-xxxxx	ATM06-2S-A - ATM04-2P-A/K1/0.5/...m	... m	

tolerance of cable/
Kabeltoleranz: L <= 4m: L + 40mm
> 4m: L + 1%



general tolerance/
Allgemeintoleranz:
0 ± 0,50 mm
0,0 ± 0,25 mm
0,00 ± 0,10 mm
* ± 5°

	Date/Datum	Name
drawn/ gez.	05.03.2021	Strakerjahn
appd./ gepr.	05.03.2021	Koch

Connecting cable ATM06 - ATM04
Verbindungsleitung ATM06 - ATM04

Index: a Original

scale/Maßstab:
1 : 1
(1:1,5)



dwg no /
Z.-nr.: 55K1A1340

DIN-
A4

RoHS compliant/konform

1 / 1