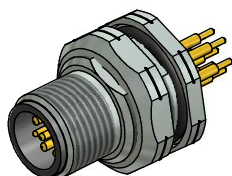


Minimum wall thickness 1,5mm,
alternativ panel cut-out d=15,3



Technical specification:

Rated voltage: 4pos 5pos
IEC 61076-2-101 250 V 60 V

Current rating: 4/5pos
IEC 61076-2-101 4 A at 40°C

Insulation resistance: >=100 MΩ
IEC 60512

Pollution degree: 3/2
IEC 60664-1

Degree of protection: IP 67, in mated
IEC 60529 condition

Temperature range: +100°C - 30.000h
+125°C - 8.000h
+150°C - 2.000h

Mating cycles: >=100
IEC 60512-9a

Materials:

Contact: CuZn

Contact plating: Nickel, gold plated

Contact carrier: PBT GF, UL 94

Sealing chassis: FPM

Counternut: CuZn, nickel plated

Socket housing: CuZn, nickel plated

Grouting: Polyurethane-resin, UL 94

Installation specification:

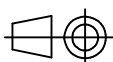
Recommended torque: 1-1,2 Nm

Conec installation tool: Torque wrench:
36-000200
Insert across flats 19:
36-000250

Part no:	Description:	Pos	Length L:	D1	D2
43-02318	SAL - HT - 12 - FSH4 - P5,5 - 9	4	5,5mm	Ø5,0	Ø1,6
43-02319	SAL - HT - 12 - FSH5 - P5,5 - 9	5			
43-02322	SAL - HT - 12 - FSH4 - P12 - 9	4	12mm	Ø5,0	Ø1,6
43-02323	SAL - HT - 12 - FSH5 - P12 - 9	5			

DO NOT ALTER CAD DRAWING BY HAND

Directive 2002/95/EC RoHS compliant



dim. in mm

	date	name
drawn	04.09.13	Brüntrup
appd.	09.09.13	Fromm



title:
**Male socket M12x1, backmounting,
PG9, HT**

dwg no:
43K1A2147

part no: see table

general tolerance: 0 ± 0,50mm
0,0 ± 0,25mm
0,00 ± 0,10mm

THIS DRAWING MAY NOT BE COPIED OR REPRODUCED IN ANY WAY, AND
MAY NOT BE PASSED ON TO A THIRD PARTY WITHOUT WRITTEN PERMISSION.
OWNERSHIP AND COPYRIGHT OF CONEC GmbH