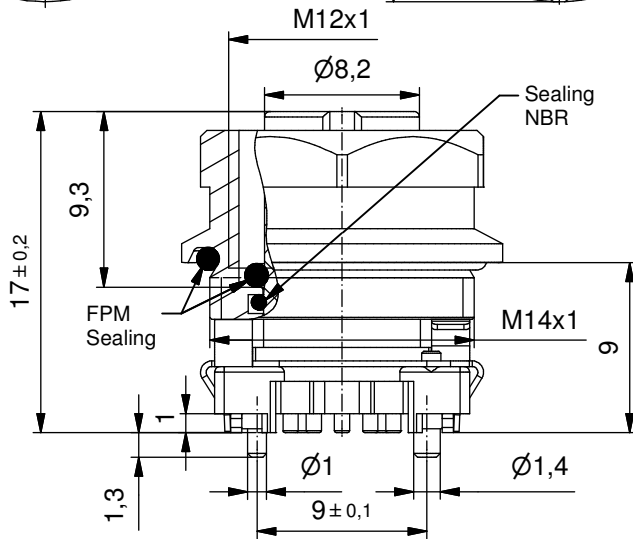


**Technical specification:**

Rated voltage: IEC 61076-2-101	8pos 30 V
Current rating: IEC 61076-2-101	8pos 2 A at 40°C
Insulation resistance: IEC 60512	>=100 MΩ
Pollution degree: IEC 60664-1	3/2
Degree of protection: IEC 60529	IP 67, in mated condition
Temperature range: EN 60512-11-10 EN 60512-11-4	-25°C ... +95°C -40°C -40°C ... +85°C



Mating cycles:  
IEC 60512-9a >=100

Total spring forces  
shroud:  
6,00mm 8-9N

**Materials:**

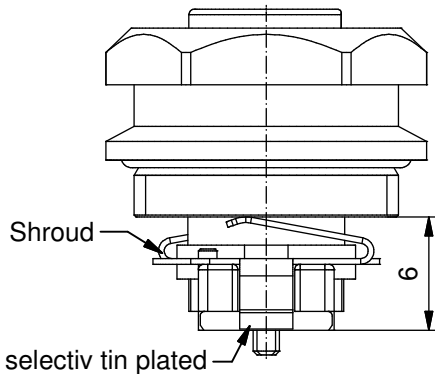
Contact:	CuZn, Ni b / Au 0,2 gal.
Contact carrier:	LCP GF, UL 94 V-0
Soldering sheet:	CuZn, Ni / tin plated
Shroud:	CuZn, Ni / sel. tin plated
Socket housing:	CuZn, Ni
Sealing:	FPM / NBR

**Installation specification:**

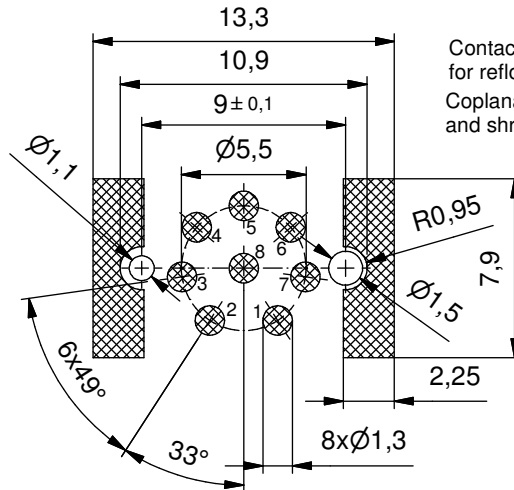
Recommended torque: 0,8-1 Nm

Conec installation tool:  
Torque wrench: 36-000200  
Insert across flats 15: 36-000320

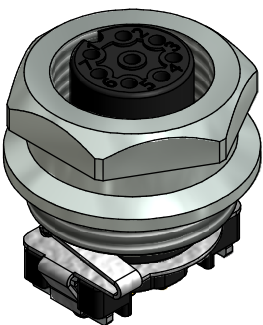
Mounting situation: see fig. 4  
43K1A1791



**Layout proposal**



Contact carrier module suitable for reflow soldering max. 60s / 250°C  
Coplanarity of all contacts, soldering sheets and shroud max 0,1mm



Part no. packing unit Tape & Reel:	Part no. packing unit in bulk:	Description:	Pos
43-02117TR	43-02117	SAL - 12S - FK8 - X9 / 14 / SMT	8

DO NOT ALTER CAD DRAWING BY HAND RoHS & REACH compliant	Index b 30.03.16 brü Ä6042 technical data changed & tolerance optimized		dim. in mm	title: <b>Female socket M12x1 SMT, shielded</b>		
					date	
			drawn		03.01.13	Kniesburgess
			appd.		03.01.13	Franz
general tolerance:		0 ± 0,50mm	dwg no: <b>43K1A1851</b>			
		0,0 ± 0,25mm				
		0,00 ± 0,10mm	part no: see table			
		* ± 1,5°				
THIS DRAWING MAY NOT BE COPIED OR REPRODUCED IN ANY WAY, AND MAY NOT BE PASSED ON TO A THIRD PARTY WITHOUT WRITTEN PERMISSION. OWNERSHIP AND COPYRIGHT OF CONEC GmbH						