

**Technical specification:**

Rated voltage: 4pos 5pos  
IEC 61076-2-101 250 V 60 V

Current rating: 4/5pos  
IEC 61076-2-101 4 A at 40°C

Insulation resistance: >=100 MΩ  
IEC 60512

Pollution degree: 3/2  
IEC 60664-1

Degree of protection: IP 67, in mated condition  
IEC 60529

Temperature range: -25°C ... +95°C  
EN 60512-11-10 -40°C  
EN 60512-11-4 -40°C ... +85°C

Mating cycles: >=100  
IEC 60512-9a

Total spring forces shroud: 6,00mm 8-9N

**Materials:**

Contact: CuZn, Ni b / Au 0,2 gal.

Contact carrier: LCP GF, UL 94 V-0

Soldering sheet: CuZn, Ni / tin plated

Shroud: CuZn, Ni / sel. tin plated

Socket housing: CuZn, Ni

Sealing: FPM / NBR

**Installation specification:**

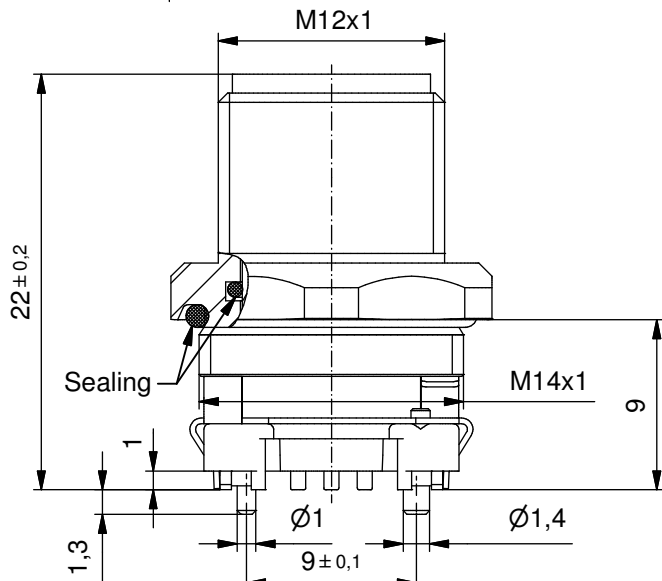
Recommended torque: 1-1,2 Nm

Conec installation tool: Torque wrench: 36-000200  
Insert across flats 17: 36-000230

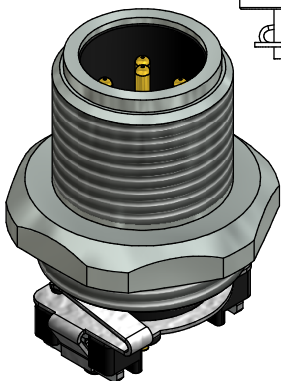
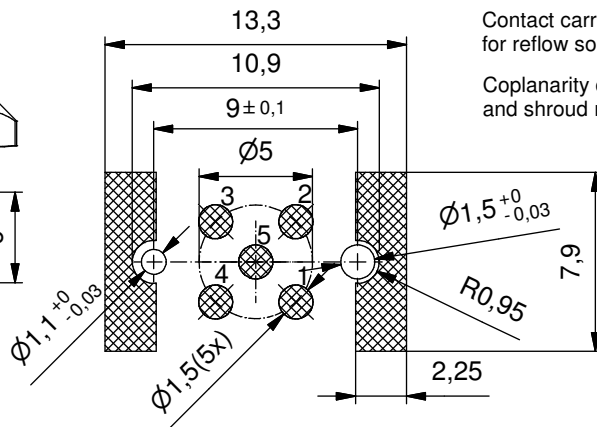
Mounting situation: see fig. 4  
43K1A1791

Contact carrier module suitable for reflow soldering max. 60s / 250°C

Coplanarity of all contacts, soldering sheets and shroud max 0,1mm



**Layout proposal**



Part no. packing unit Tape & Reel:	Part no. packing unit in bulk:	Description:	Pos
43-02112TR	43-02112	SAL - 12S - FS4 - X9 / 14 / SMT	4
43-02113TR	43-02113	SAL - 12S - FS5 - X9 / 14 / SMT	5

DO NOT ALTER CAD DRAWING BY HAND

RoHS & REACH compliant

Index b 30.03.16 brü Ä6042  
technical data changed & tolerance optimized

general tolerance: 0 ± 0,50mm  
0,0 ± 0,25mm  
0,00 ± 0,10mm  
\* ± 1,5°

THIS DRAWING MAY NOT BE COPIED OR REPRODUCED IN ANY WAY, AND MAY NOT BE PASSED ON TO A THIRD PARTY WITHOUT WRITTEN PERMISSION. OWNERSHIP AND COPYRIGHT OF CONEC GmbH

dim. in mm

date	name
drawn 16.01.13	Gitinow
appd. 16.01.13	Kniesburgers

**CONEC®**

title: Male socket M12x1 SMT, shielded

dwg no: 43K1A1821

part no: see table