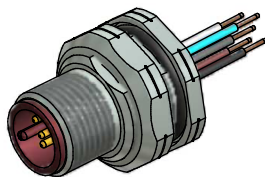


A

**Contact assignment:**

- 1 ■ brown
- 2 ■ white
- 3 ■ blue
- 4 ■ black
- 5 ■ grey



**Technical specification:**

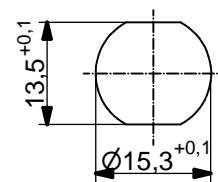
Rated voltage: IEC 61076-2-101	60 V
Current rating: IEC 61076-2-101	4 A at 40°C
Insulation resistance: IEC 60512	>=100 MΩ
Pollution degree: IEC 60664-1	3/2
Degree of protection: IEC 60529	IP 67, in mated condition
Temperature range: IEC 60664-1	+100°C - 30.000h +125°C - 8.000h +150°C - 2.000h
Mating cycles: IEC 60512-9a	>=100

**Materials:**

Contact:	CuZn
Contact plating:	Nickel, gold plated
Contact carrier:	PBT GF, UL 94
Sealing:	FPM
Counternut:	CuZn, nickel plated
Socket housing:	CuZn, nickel plated
Grouting:	Polyurethane-resin, UL 94

**Installation specification:**

recommended torque:	1-1,2 Nm
Conec installation tool:	Torque wrench: 36-000200 Insert across flats 19: 36-000250



Minimum wall thickness 1,5mm,  
alternativ panel cut-out d=15,3

Part no:	Description:	Pos	Wire:
43-01138	SAL - HT - 12 - FSH5.1 - 0,5 - 9	5	Copolymer, UL AWG 24

DO NOT ALTER CAD DRAWING BY HAND

Directive 2002/95/EC RoHS compliant

Index: a 14.03.11 fro Ä3914  
specification of wires changed, data sheet revised

tolerance of wire: L <= 0,5m: L + 20mm  
L > 0,5m: L + 4%

THIS DRAWING MAY NOT BE COPIED OR REPRODUCED IN ANY WAY, AND MAY NOT BE PASSED ON TO A THIRD PARTY WITHOUT WRITTEN PERMISSION.  
OWNERSHIP AND COPYRIGHT OF CONEC GmbH

	dim. in mm	
	date	name
drawn	18.04.07	Fromm
appd.	18.04.07	Mankopf



title:  
**Male socket M12x1 with wire,  
backmounting, HT, PG9**

dwg no:  
**43K1A490**

part no: