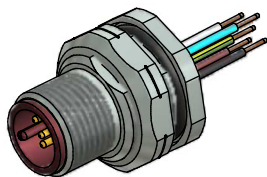


Contact assignment:

- brown — 1
- white — 2
- blue — 3
- black — 4
- green-yellow — 5



Technical specification:

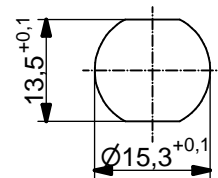
Rated voltage:	4pos 5pos
IEC 61076-2-101	250 V 60 V
Current rating:	4 A at 40°C
IEC 61076-2-101	
Insulation resistance:	>=100 MΩ
IEC 60512	
Pollution degree:	3/2
IEC 60664-1	
Degree of protection:	IP 67, in mated condition
IEC 60529	
Temperature range:	+100°C - 30.000h
IEC 60664-1	+125°C - 8.000h
	+150°C - 2.000h
Mating cycles:	>=100
IEC 60512-9a	

Materials:

Contact:	CuZn
Contact plating:	Nickel, gold plated
Contact carrier:	PBT GF, UL 94
Sealing:	FPM
Counternut:	CuZn, nickel plated
Socket housing:	CuZn, nickel plated
Grouting:	Polyurethane-resin, UL 94

Installation specification:

recommended torque:	1-1,2 Nm
Conec installation tool:	Torque wrench: 36-000200 Insert across flats 19: 36-000250



Minimum wall thickness 1,5mm, alternativ panel cut-out d=15,3

Part no:	Description:	Pos	Length L:	Wire:
43-01133	SAL - HT - 12 - FSH4 - 0,5 - 9	4	0,5m	Copolymer, UL AWG 24
43-xxxxx	SAL - HT - 12 - FSH4 - ... - 9	4	x	
43-01134	SAL - HT - 12 - FSH5 - 0,5 - 9	5	0,5m	
43-xxxxx	SAL - HT - 12 - FSH5 - ... - 9	5	x	

DO NOT ALTER CAD DRAWING BY HAND
Directive 2002/95/EC RoHS compliant

Index: b 02.09.10 fro Ä3696
specification of wires changed

tolerance of wire: L <= 0,5m: L + 20mm
L > 0,5m: L + 4%

THIS DRAWING MAY NOT BE COPIED OR REPRODUCED IN ANY WAY, AND MAY NOT BE PASSED ON TO A THIRD PARTY WITHOUT WRITTEN PERMISSION.
OWNERSHIP AND COPYRIGHT OF CONEC GmbH

dim. in mm	date	name
	01.03.07	Fromm
	01.03.07	Mankopf



title:
Male socket with wires M12x1, backmounting, HT, PG9

dwg no:
43K1A331

part no: