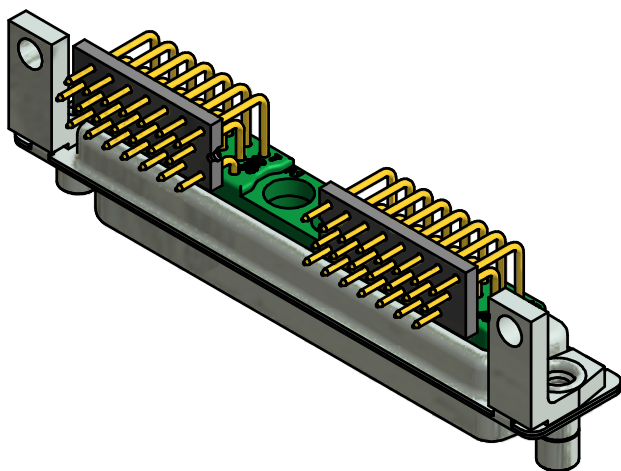
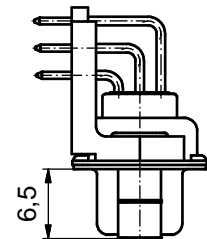
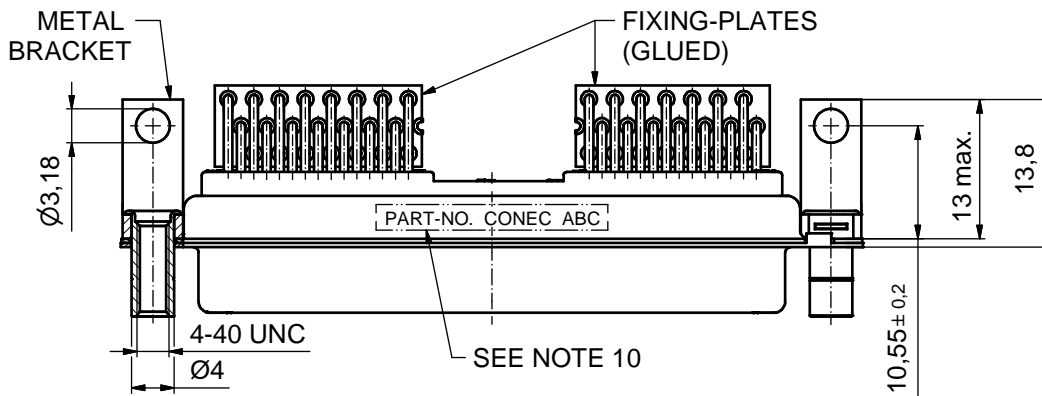
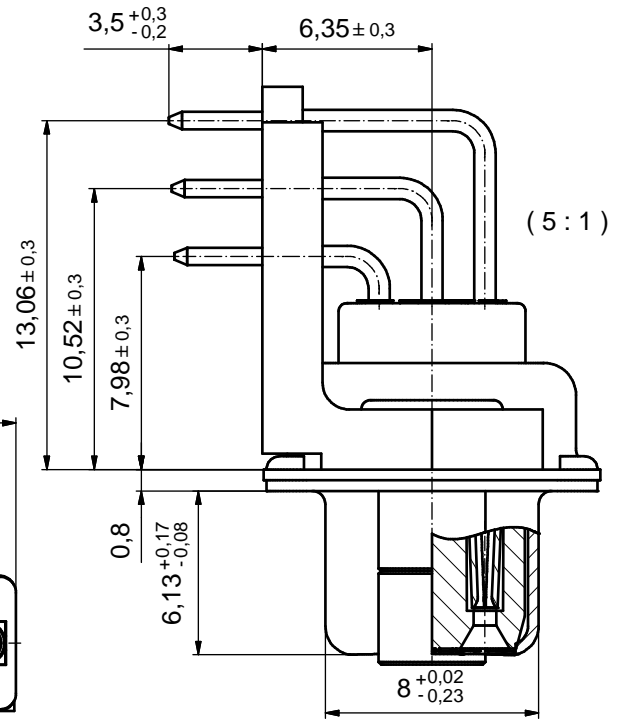
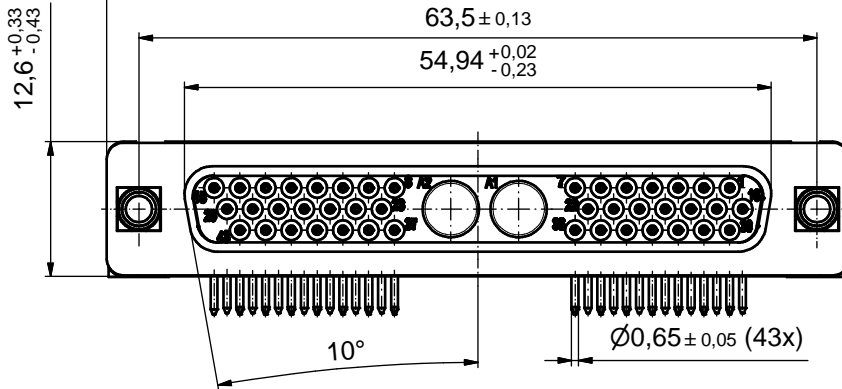


|  |                 |
|--|-----------------|
| CONTACT PLATING                                      | PART-NO.        |
| SIGNAL CONTACTS<br>GOLD FLASH over NICKEL            | 3H45W2SAT99H60X |
| SIGNAL CONTACTS<br>30µin HARD GOLD over 50µin NICKEL | 3H45W2SCT99H60X |



NOTES:

- METAL SHELLS: STEEL; min. 315µin TIN over 40-80µin NICKEL
- INSULATORS: PBT GF UL 94 V-0; GREEN
- SIGNAL CONTACTS: COPPER ALLOY  
PLATING: SEE TABLE
- NO CONTACTS ON POS. A1 - A2
- THREADED LOCKS: COPPER ALLOY; min. 200µin TIN over 80µin NICKEL
- METAL BRACKETS: ZINC DIE CAST; 300µin COPPER/40-120µin NICKEL/120-200µin TIN
- FIXING-PLATES: PBT GF UL 94 V-0; BLACK
- P.C.B. HOLE DRILLINGS ON SHEET 2
- MAXIMUM TORQUE VALUE FOR THREAD: 6 in.LB
- CONNECTOR IS PART MARKED: PART-NO. CONEC ABC

Directive 2002/95/EC RoHS compliant

|  |                  |           |   |                     |  |  |
|--|------------------|-----------|---|---------------------|--|--|
| THIS DRAWING MAY NOT BE COPIED OR REPRODUCED IN ANY WAY, AND MAY NOT BE PASSED ON TO A THIRD PARTY WITHOUT WRITTEN PERMISSION. OWNERSHIP AND COPYRIGHT OF CONEC GmbH<br>DO NOT ALTER CAD DRAWING BY HAND | tolerance        |           | dim. in mm  | scale: 2:1 (5:1)    |  |  |
|  |                  |           |   | material: SEE NOTES |  |  |
|  | date             | name      | title:<br><b>D-SUB HD COMB. FEMALE 90°</b><br>45W2S SOLDER PIN ANGLED<br>threaded lock, metal bracket, fixing-plate |                     |  |  |
|  | drawn 25.03.2013 | Liedmann  |   |                     |  |  |
|  | appd. 25.03.2013 | Koch      |   |                     |  |  |
| norm   |                  | dwg no:   |   | DIN-A3              |  |  |
| d-old  |                  | 13K1A4267 |   | sh: 1               |  |  |
| a Original   |                  |           |   | part no: SEE TABLE  |  |  |
| rev. description   | date name        |           |   |                     |  |  |