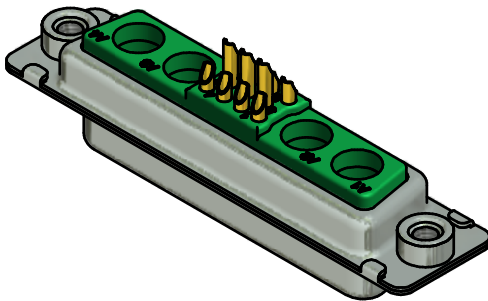
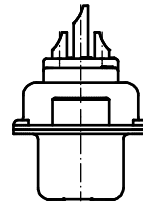
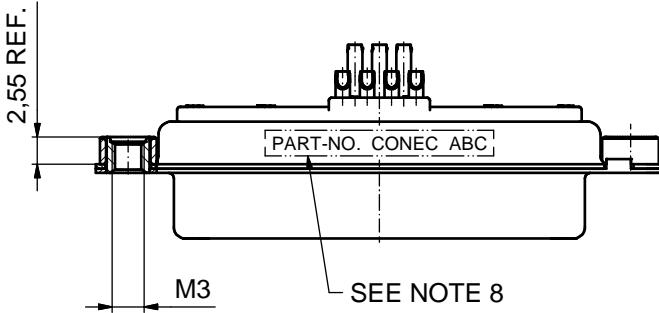
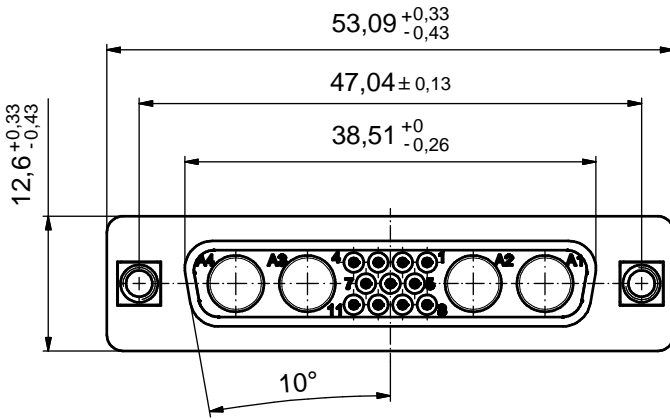
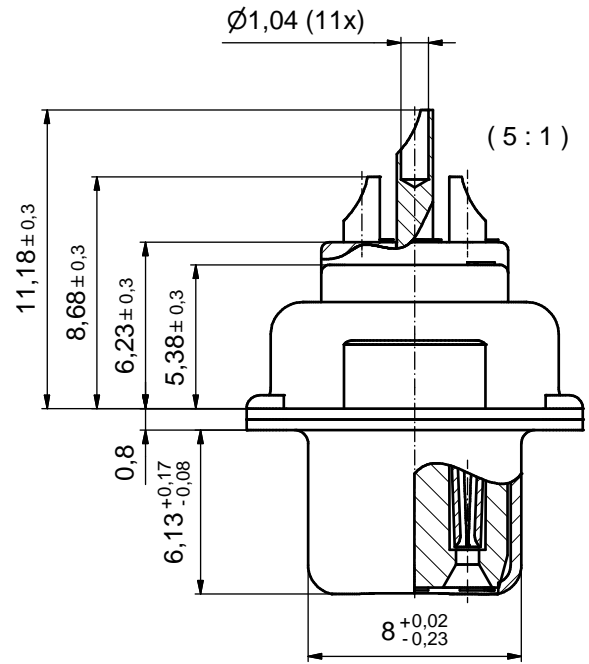


CONTACT PLATING	PART-NO.
SIGNAL CONTACTS GOLD FLASH over NICKEL	3H15W4SAM99A20X
SIGNAL CONTACTS 30µin HARD GOLD over 50µin NICKEL	3H15W4SCM99A20X



NOTES:

- METALSHELLS: STEEL; min. 315µin TIN over 40-80µin NICKEL
- INSULATORS: PBT GF UL 94 V-0; GREEN
- SIGNAL CONTACTS: COPPER ALLOY
PLATING: SEE TABLE
SOLDER CUP ACCEPTS CABLE AWG 22
- NO CONTACTS ON POS. A1 - A4
- THREADED INSERTS: COPPER ALLOY; min. 200µin TIN over 80µin NICKEL
- COLLARS: COPPER ALLOY; min. 200µin TIN over 80µin NICKEL
- MAXIMUM TORQUE VALUE FOR THREAD: 6 in.LB
- CONNECTOR IS PART MARKED: [PART-NO. CONEC ABC]

Directive 2002/95/EC RoHS compliant

THIS DRAWING MAY NOT BE COPIED OR REPRODUCED IN ANY WAY, AND MAY NOT BE PASSED ON TO A THIRD PARTY WITHOUT WRITTEN PERMISSION. OWNERSHIP AND COPYRIGHT OF CONEC GmbH DO NOT ALTER CAD DRAWING BY HAND	tolerance		dim. in mm	scale: 2:1 (5:1)	
				material: SEE NOTES	
	date	name		title: D-SUB HD COMBINATION FEMALE 15W4S SOLDER CUP with threaded insert	
	drawn 13.03.2013	Liedmann			
	appd. 13.03.2013	Koch			
	norm	d-old		dwg no:	
a Original			13K1A4236		
rev. description	date	name	part no: SEE TABLE		DIN-A3 sh: 1