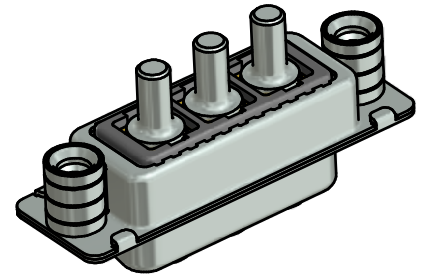
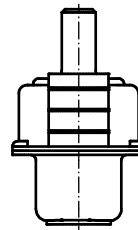
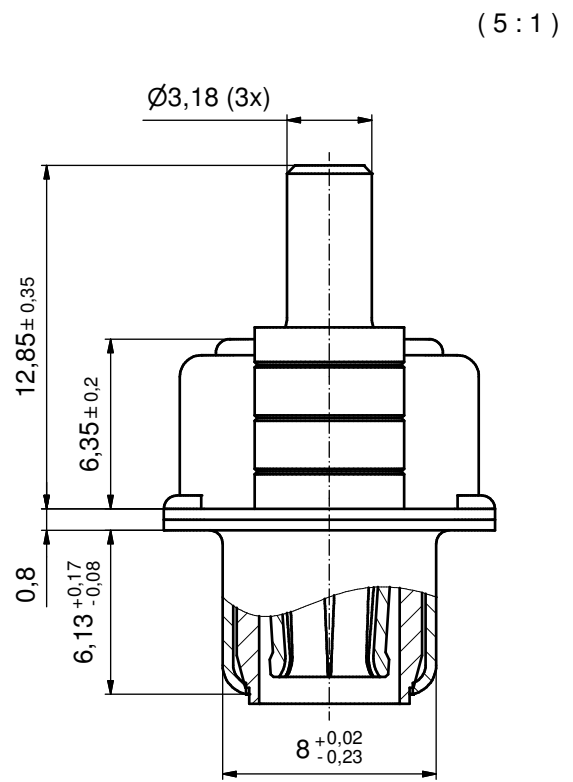
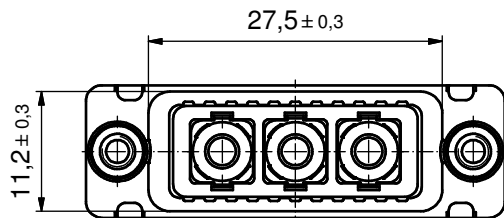
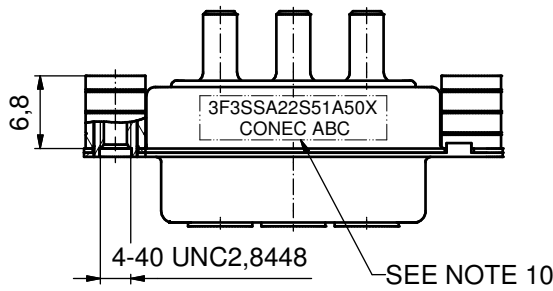
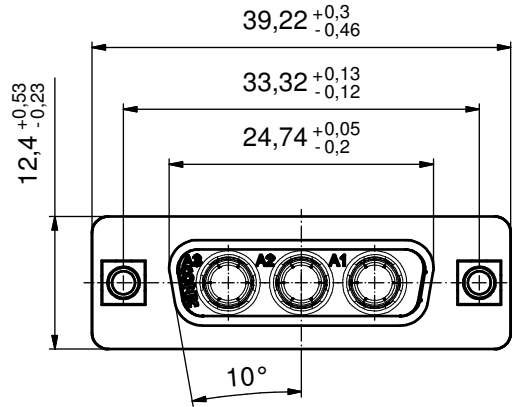


P.C.B. HOLE DRILLINGS
(P.C.B. TOP SIDE)



NOTES:

- FOR WAVESOLDERING (SOLDER BATH TEMPERATURE 260 °C FOR 5 SEC. AND SOLDER PREHEAT 120 °C FOR 120 SEC.)
- METALSHELLS: STEEL; min. 315µm TIN over 40-80µm NICKEL
- INSULATOR: PBT GF UL 94 V-0, BLACK
- HIGH POWER CONTACTS 30A: COPPER ALLOY
PLATING, MATING AREA: GOLD FLASH over NICKEL
PLATING, TERMINATION SIDE: 160-240µm TIN over 80µm NICKEL
- THREADED REAR SPACERS: COPPER ALLOY; min. 200µm TIN over 80µm NICKEL
- SLEEVES: COPPER ALLOY; min. 200µm TIN over 80µm NICKEL
- CAPACITANCE: 47nF ±20%
- DIELECTRIC WITHSTANDING VOLTAGE: 707 VDC
- MAXIMUM TORQUE VALUE FOR THREAD: 6 in.LB
- CONNECTOR IS PART MARKED: **3F3SSA22S51A50X CONEC ABC**

RoHS compliant

THIS DRAWING MAY NOT BE COPIED OR REPRODUCED IN ANY WAY, AND MAY NOT BE PASSED ON TO A THIRD PARTY WITHOUT WRITTEN PERMISSION. OWNERSHIP AND COPYRIGHT OF CONEC GmbH DO NOT ALTER CAD DRAWING BY HAND					tolerance	dim. in mm	scale: 2:1 (5:1)			
					date		name	material: SEE NOTES		
					drawn	17.03.15	Henneboel	title: D-SUB FILTER COMB. FEMALE 3W3S SOLDER PIN STRAIGHT with threaded rear spacer		
					appd.	17.03.15	Schmidt			
					norm					
					d-old					
					rev.	a	Original	dwg no:	24K1A1579	DIN-A3
					description			part no:	3F3SSA22S51A50X	sh: 1
					date					
					name					
				CONEC						