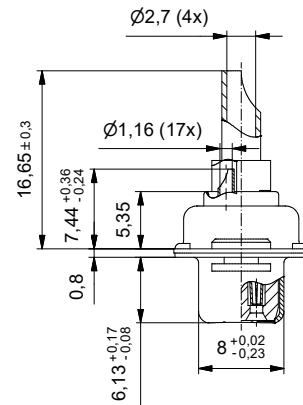
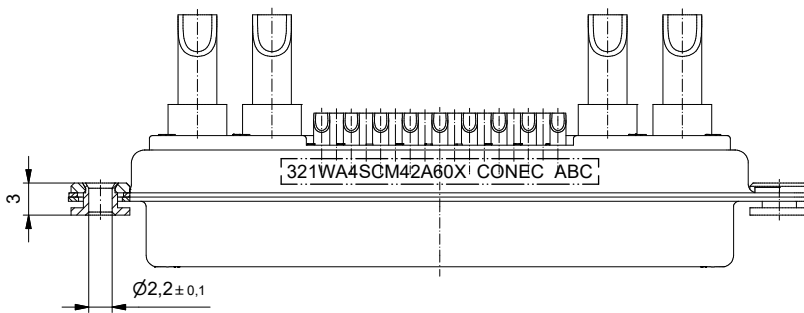
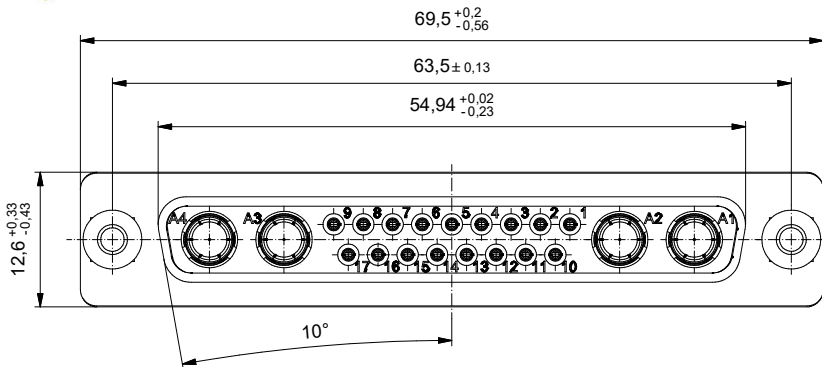


**Technical specification/
Technische Daten:**

Dielectric withstanding voltage/ Spannungsfestigkeit:	1000 V, 50 Hz 1 min.
Current rating/ Strombelastbarkeit:	Signal contact 7,5 A (UL), 5 A (CSA,VDE) Signal Kontakt High power contact 20 A Hochstromkontakt
Insulation resistance/ Isolationswiderstand:	≥ 5 GΩ
Solder cup accepts cable/ Lötkehl geeignet für Kabel:	Signal contact AWG 20 Signal Kontakt High power contact AWG 12-14 Hochstrom Kontakt
Temperature range/ Temperaturbereich:	- 55 °C ... + 125 °C
Mating cycles/ Steckzyklen:	Quality class 1 = 500 Gütestufe 1

**Materials/
Werkstoffe:**

Contact/ Kontakt:	Cu alloy, Au over Ni
Insulator/ Isolierkörper:	PBT GF UL 94 V-0, green/grün
Shell/ Gehäuse:	Steel, Sn over Ni
Floats/ schwimmende Befestigung:	Cu alloy, Sn



Part no. / Part marked/ Art.-Nr. / Bedruckung:	321WA4SCM42A60X	Contact plating/ Kontakt Veredelung:	Signal contact Signalkontakt:	30 µm hard gold over min. 50 µm nickel 30 µm Gold über min. 50 µm Nickel
		High power contact 20 A/ Hochstromkontakt 20 A:	plating, mating area: Veredelung, Steckbereich:	30 µm hard gold over min. 50 µm nickel 30 µm Gold über min. 50 µm Nickel
			plating, termination side: Veredelung, Anschluss Seite:	gold flash over nickel Gold über Nickel
Index:	a Original	Scale/ Maßstab:	2:1	
Status:	InBearbeitung			
RoHS compliant/ konform				
		dim. in mm		D-SUB Combination Female 21WA4S Solder cup with float mount D-SUB Combination Buchse 21WA4S Lötkehl mit schwimmender Befestigung
		Date/ Datum:	Name:	
		drawn/ gez.:	10.10.2019 Lehnenkühler	
		appd./ gepr.:	10.10.2019 Henneboel	
		dwg no / Z.-nr.:		13K1A5934
		DIN-A3		1 / 1

This reproduction, distribution and utilization of this document as well as the communication of its contents to others without express authorization is prohibited. Offenders will be held liable for the payment of damages. For further information on our legal notices please refer to our website: www.conec.com.