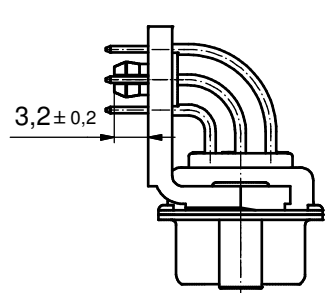
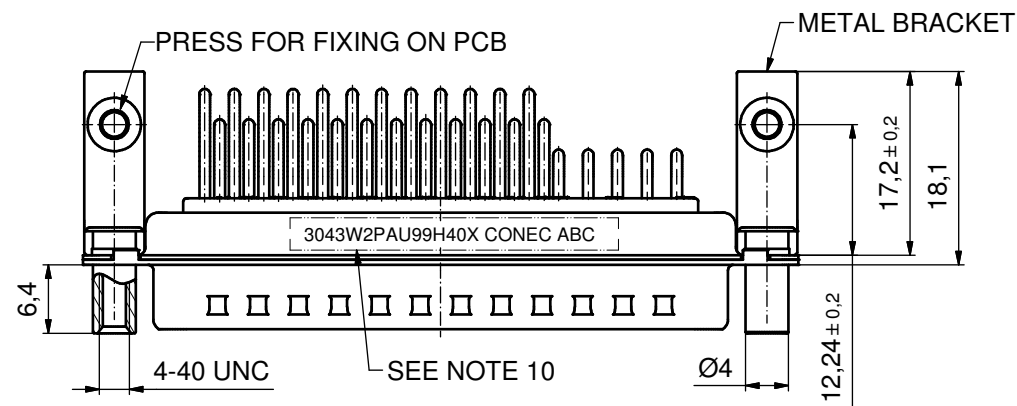
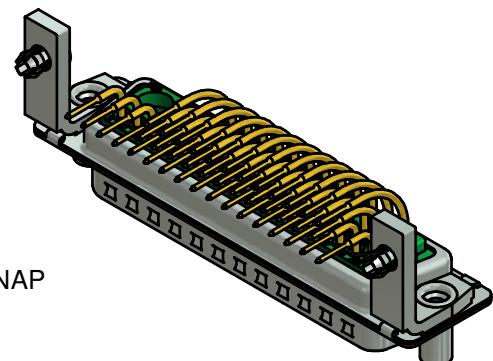
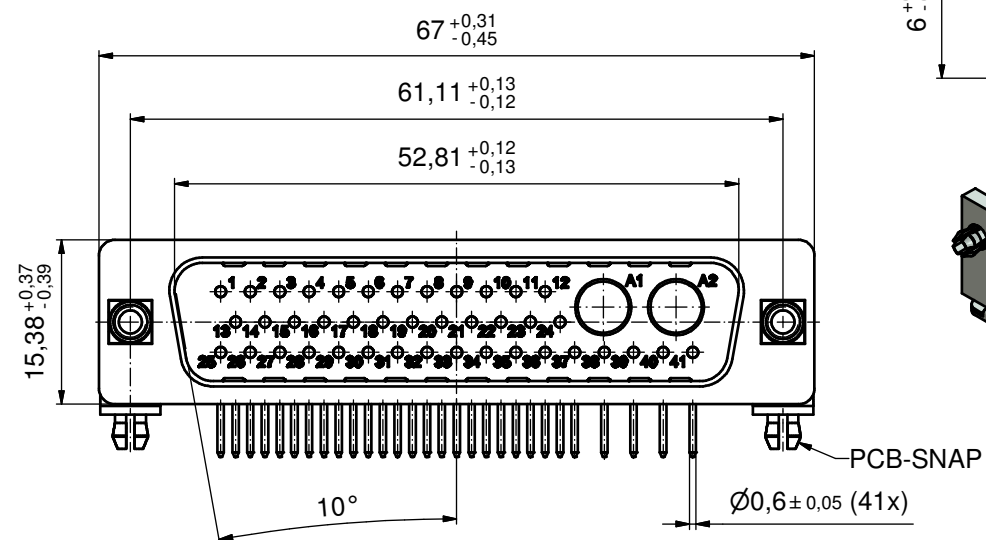
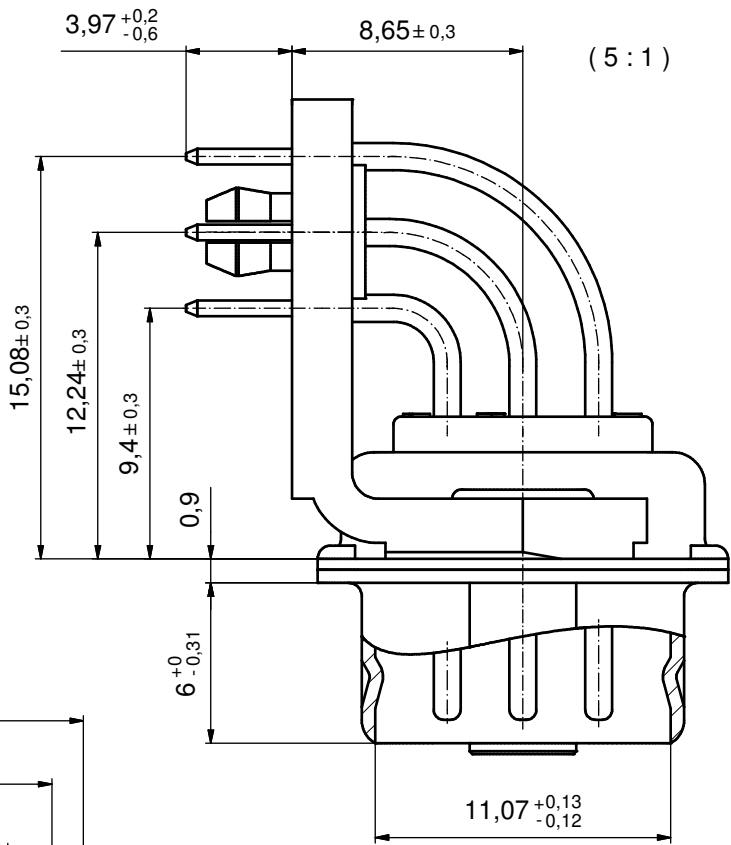


NOTES:

1. METALSHELLS: STEEL; min. 315µin TIN over 40-80µin NICKEL
2. INSULATORS: PBT GF UL 94 V-0, GREEN
3. SIGNAL CONTACTS: COPPER ALLOY  
PLATING: GOLD FLASH over NICKEL
4. NO CONTACTS ON POS: A1 + A2
5. THREADED LOCKS: COPPER ALLOY;  
min. 200µin TIN over 80µin NICKEL
6. METAL BRACKETS: STEEL; 320µin TIN over 80µin Nickel
7. PCB-SNAPS: COPPER ALLOY; min. 200µin TIN over 80µin NICKEL  
PCB-HOLE:  $\varnothing 3,1 \pm 0,1$ mm; PCB-THICKNESS: 1,6mm
8. P.C.B. HOLE DRILLINGS ON SHEET 2
9. MAXIMUM TORQUE VALUE FOR THREAD: 6 in.LB
10. CONNECTOR IS PART MARKED:  
**3043W2PAU99H40X CONEC ABC**

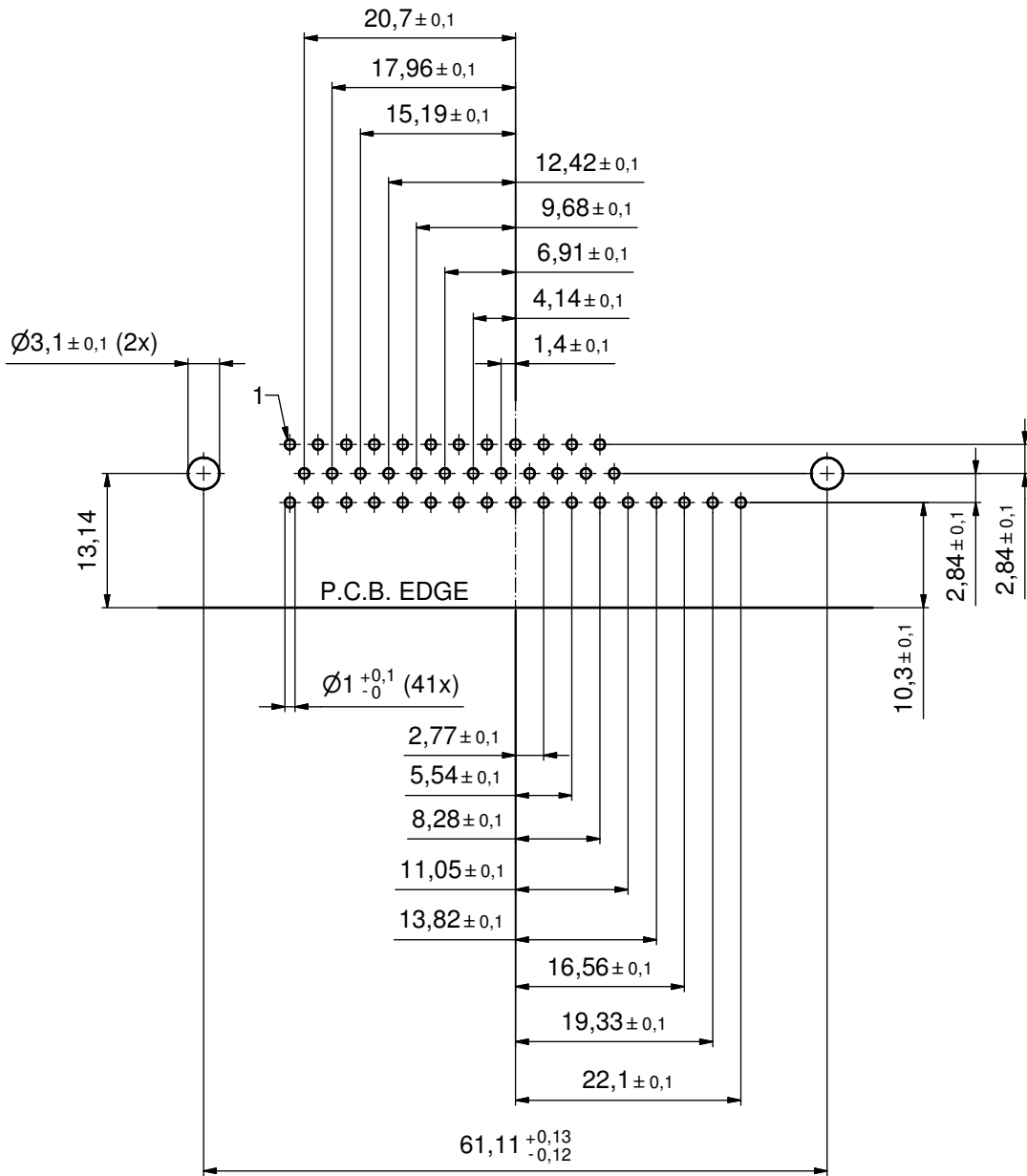


Directive 2002/95/EC RoHS compliant

THIS DRAWING MAY NOT BE COPIED OR REPRODUCED IN ANY WAY, AND MAY NOT BE PASSED ON TO A THIRD PARTY WITHOUT WRITTEN PERMISSION. OWNERSHIP AND COPYRIGHT OF CONEC GmbH  DO NOT ALTER CAD DRAWING BY HAND	tolerance		dim. in mm	scale:	2:1 (5:1)
				material:	see notes
	drawn	11.09.14	Henneboel	title:	
	appd.	11.09.14	Lehmenkühler	D-SUB COMBINATION MALE 90°	
	norm			43W2P	
d-old			with threaded lock, metal bracket and snap		
a	Original		dwg no:	13K1A4772	DIN-A3
rev.	description	date	name	part no:	3043W2PAU99H40X
			<b>CONEC</b>		sh: 1/2

# P.C.B. HOLE DRILLINGS

(P.C.B. TOP SIDE)



THIS DRAWING MAY NOT BE COPIED OR REPRODUCED IN ANY WAY, AND MAY NOT BE PASSED ON TO A THIRD PARTY WITHOUT WRITTEN PERMISSION. OWNERSHIP AND COPYRIGHT OF CONEC GmbH DO NOT ALTER CAD DRAWING BY HAND				tolerance		scale: 2:1	
				dim. in mm		material: SEE SHEET 1	
				date	name	title: <b>P.C.B. HOLE DRILLINGS</b> D-SUB COMBINATION MALE 90° 43W2P with threaded lock, metal bracket and snap	
				drawn	11.09.14 Henneboel		
				appd.	11.09.14 Lehmenkühler		
				norm			
				d-old		dwg no:	
	a	Original		<b>CONEC</b> <sup>®</sup>		13K1A4772	DIN-A3
	rev.	description	date			name	sh: 2/2
						part no: SEE SHEET 1	