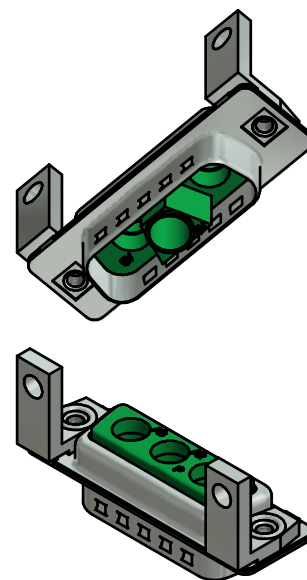
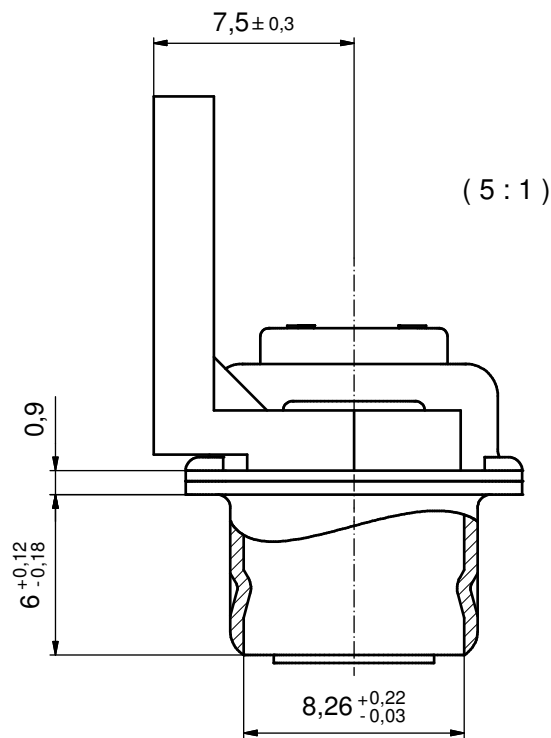
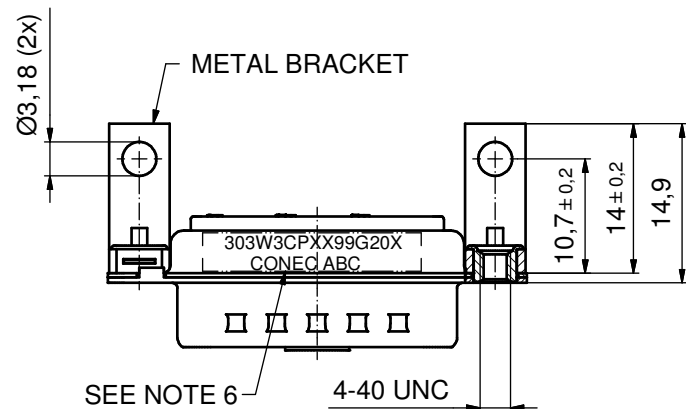
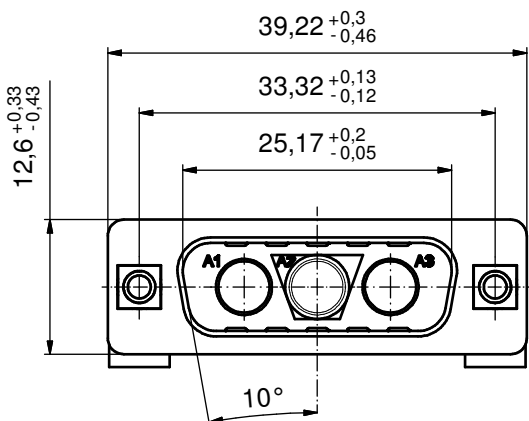


P.C.B. HOLE DRILLINGS
(P.C.B. TOP SIDE)



NOTES:

- METALSHELLS: STEEL; min. 315µm TIN OVER 40-80µm NICKEL
- INSULATORS: PBT GF UL 94 V-0; GREEN
- NO CONTACTS ON POS. A1 - A3
- THREADED INSERTS: COPPER ALLOY; min. 200µm TIN OVER 80µm NICKEL
- MAXIMUM TORQUE VALUE FOR THREAD: 6 in.LB
- CONNECTOR IS PART MARKED: 303W3CPXX99G20X CONEC ABC

Directive 2002/95/EC RoHS compliant

THIS DRAWING MAY NOT BE COPIED OR REPRODUCED IN ANY WAY, AND MAY NOT BE PASSED ON TO A THIRD PARTY WITHOUT WRITTEN PERMISSION. OWNERSHIP AND COPYRIGHT OF CONEC GmbH DO NOT ALTER CAD DRAWING BY HAND				tolerance		scale: 2:1 (5:1)	
				dim. in mm		material: SEE NOTES	
				date	name	title:	
				drawn 11.01.11	Henneboel	D-SUB COMBINATION MALE 90° 3W3CP with threaded insert and metal bracket	
				appd. 11.01.11	Koch		
				norm			
				d-old		dwg no: Inventor 10	DIN-A3
a	Origin		CONEC [®]			13K1A3536	sh: 1
rev.	description	date				name	part no: 303W3CPXX99G20X