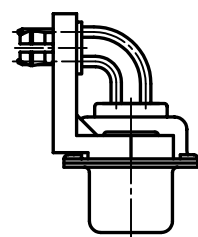
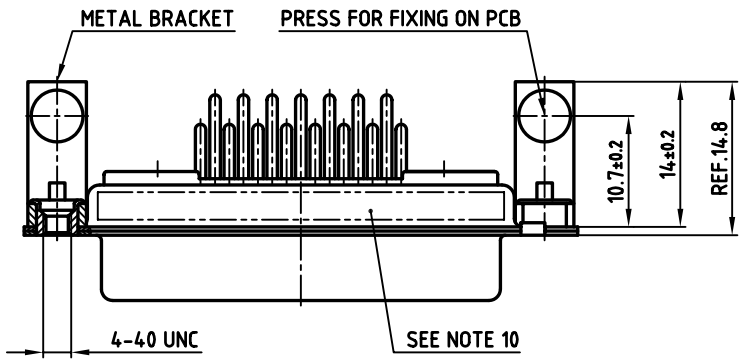
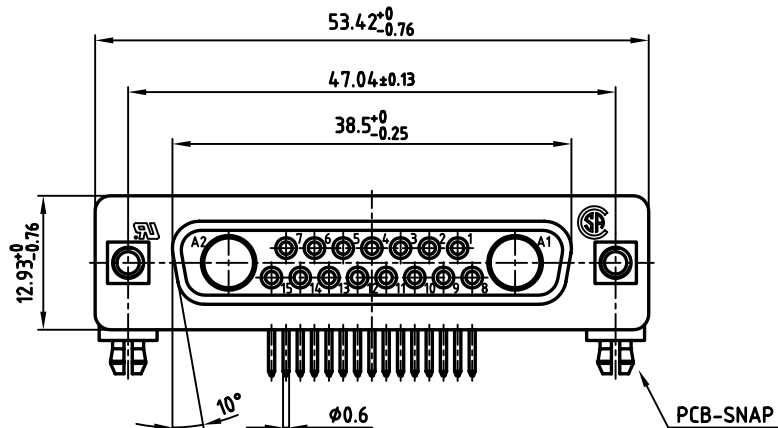
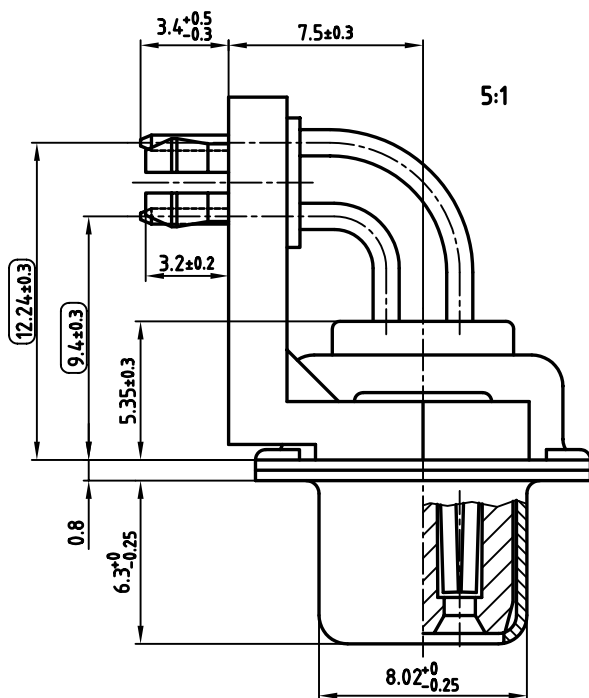


used for: D-SUB COMBINATION

**NOTES:**

1. METALSHELLS: STEEL; min. 320µ" TIN
2. INSULATORS: PBT GF UL 94 V-0, GREEN
3. SIGNAL CONTACTS: COPPER ALLOY  
PLATING: 8µ" HARD GOLD OVER min. 50µ" NICKEL
4. NO CONTACTS ON POS. A1 + A2
5. METAL BRACKET: DIE-CASTING; min. 320µ" TIN over 80µ" NICKEL
6. THREADED INSERT: COPPER ALLOY; min. 200µ" TIN over 80µ" NICKEL
7. PCB-SNAP: COPPER ALLOY; min. 200µ" TIN over 80µ" NICKEL  
PCB-HOLE:  $\phi 3.1 \pm 0.1$ ; PCB THICKNESS 1.6mm
8. P.C.B. HOLE DRILLINGS ON SHEET 2
9. MAXIMUM TORQUE VALUE FOR THREAD: 6" LBS
10. CONNECTOR IS PART MARKED: 3017W2SAU99G40X CONEC ABC
11.    = CHECK DIMENSION



APPROVAL # FREIGABE # DEBLOCAGE # AUTORIZACION # APPROVAL	
CUSTOMER APPROVAL DATE:	
NAME:	TITLE:
COMPANY NAME:	
APPROVAL # FREIGABE # DEBLOCAGE # AUTORIZACION # APPROVAL	

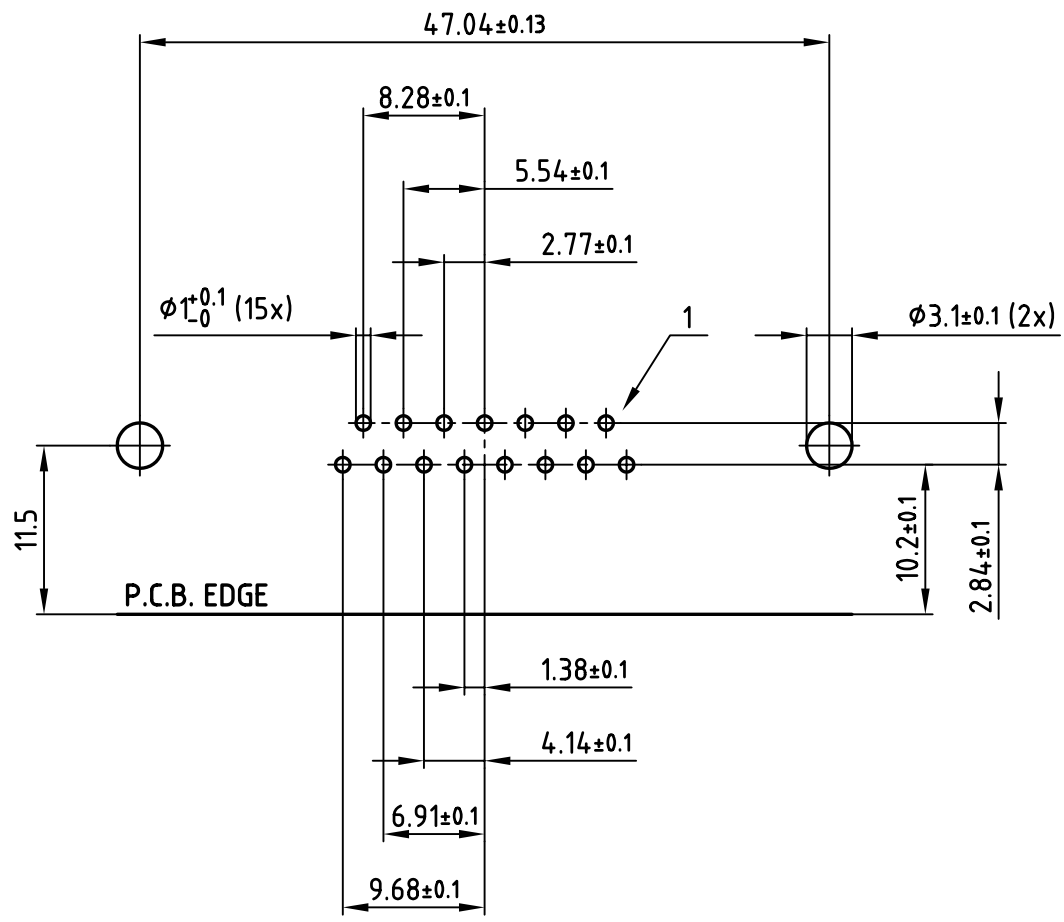
THIS DRAWING MAY NOT BE COPIED OR REPRODUCED IN ANY WAY, AND MAY NOT BE PASSED ON TO A THIRD PARTY, WITHOUT WRITTEN PERMISSION. OWNERSHIP AND COPYRIGHT OF CONEC Gmbh DO NOT ALTER CAD DRAWING BY HAND

tolerance		scale:	2:1 (5:1)
	dim. in mm	material:	SEE NOTES
2005	date	name	
drawn	30.08.	Lehmenkühler	
appd.	30.08.	Mickenbecker	
norm			
d-old			
rev.	description	date	name

title:	D-SUB COMBINATION FEMALE 90°
	17W2S
	with threaded insert, metal bracket and clip
dwg no:	AutoCAD 2004
	DIN-A
	3
	sh:1/2
part no:	3017W2SAU99G40X



used for: D-SUB COMBINATION



APPROVAL # FREIGABE # DEBLOCAGE # AUTOR/ZACION # APPROVAL

CUSTOMER APPROVAL DATE:

NAME: TITLE:

COMPANY NAME:

APPROVAL # FREIGABE # DEBLOCAGE # AUTOR/ZACION # APPROVAL

THIS DRAWING MAY NOT BE COPIED OR REPRODUCED IN ANY WAY, AND MAY NOT BE PASSED ON TO A THIRD PARTY WITHOUT WRITTEN PERMISSION. OWNERSHIP AND COPYRIGHT OF CONEC GmbH DO NOT ALTER CAD DRAWING BY HAND

rev.	description	date	name
		2005	date
		drawn	30.08. Lehmenkühler
		appd.	30.08. Mickenbecker
		norm	
		d-old	

tolerance

dim. in mm



scale: 2:1

material: SEE SHEET 1

title: P.C.B. HOLE DRILLINGS  
D-SUB COMBINATION FEMALE 90° 17W2S  
with threaded insert, metal bracket and clip

dwg no: AutoCAD 2004

part no: SEE SHEET 1

DIN-A 4 sh:2/2

4

3

2

1

F

F

E

E

D

D

C

C

B

B

A

A

4

3

2

1