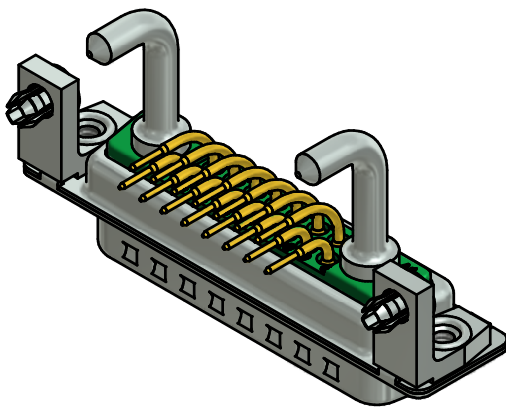


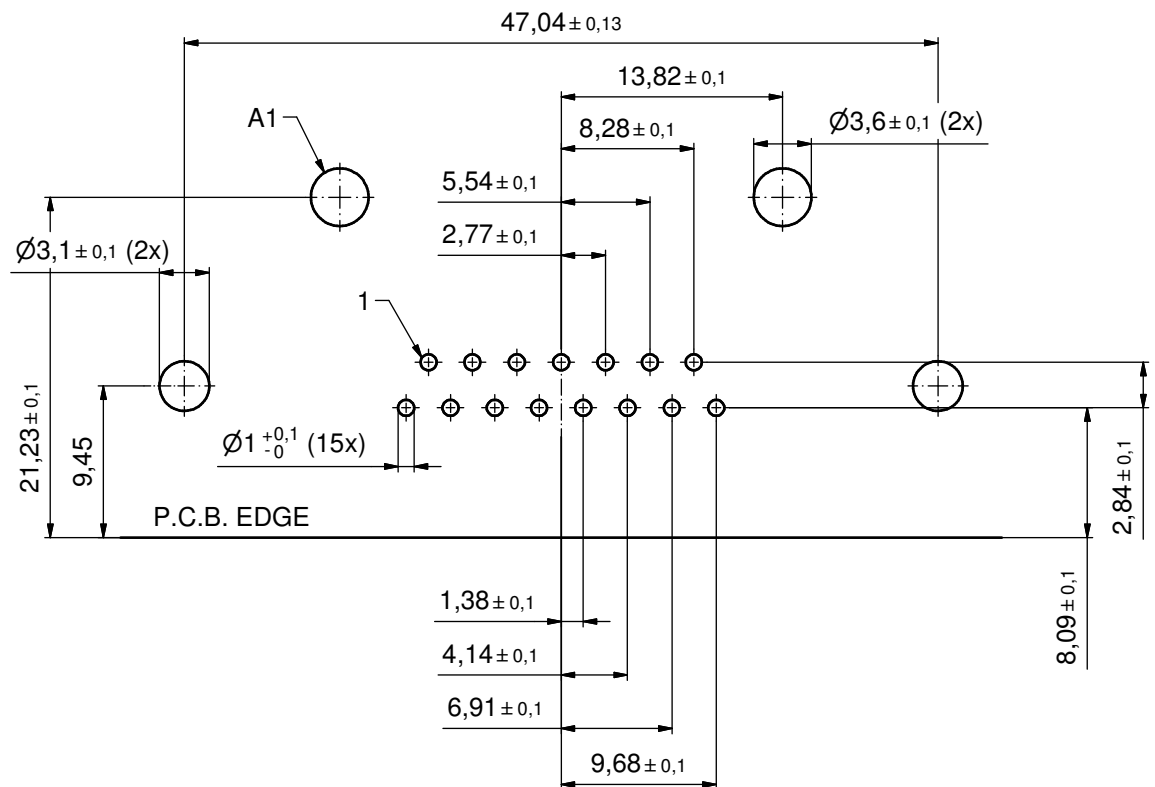
NOTES:


1. METAL SHELLS: STEEL; min. 315µm TIN over 40-80µm NICKEL
2. INSULATORS: PBT GF UL 94 V-0, GREEN
3. SIGNAL CONTACTS: COPPER ALLOY
PLATING: GOLD FLASH over NICKEL
4. HIGH POWER CONTACTS 30A: COPPER ALLOY
PLATING MATING AREA: GOLD FLASH over NICKEL
PLATING TERMINATION SIDE: 160-240µm TIN over 80µm NICKEL
5. THREADED INSERTS: COPPER ALLOY; min. 200µm TIN over 80µm NICKEL
6. METAL BRACKETS: ZINC DIE CAST; 300µm COPPER/40-120µm NICKEL/120-200µm TIN
7. PCB-SNAPS: COPPER ALLOY; min. 200µm TIN over 80µm NICKEL
PCB-HOLE: $\varnothing 3.1 \pm 0,1$ mm; PCB-THICKNESS: 1,6mm
8. P.C.B. HOLE DRILLINGS ON SHEET 2
9. MAXIMUM TORQUE VALUE FOR THREAD: 6 in.LB
10. CONNECTOR IS PART MARKED: 3017W2PAT74N40X CONEC ABC



Directive 2002/95/EC RoHS compliant

THIS DRAWING MAY NOT BE COPIED OR REPRODUCED IN ANY WAY, AND MAY NOT BE PASSED ON TO A THIRD PARTY WITHOUT WRITTEN PERMISSION. OWNERSHIP AND COPYRIGHT OF CONEC GmbH DO NOT ALTER CAD DRAWING BY HAND	tolerance		dim. in mm	scale: 2:1 (5:1)		
				material: SEE NOTES		
	drawn	20.09.12	Henneboel	title: D-SUB COM. FEMALE 90° 7W2P with threaded insert, metal bracket and snap		
	appd.	20.09.12	Koch			
	norm					
	d-old					
	a	Original				dwg no: 13K1A4065
	rev.	description	date	name	part no: 3017W2PAT74N40X	
					DIN-A3 sh: 1/2	



THIS DRAWING MAY NOT BE COPIED OR REPRODUCED IN ANY WAY, AND MAY NOT BE PASSED ON TO A THIRD PARTY WITHOUT WRITTEN PERMISSION. OWNERSHIP AND COPYRIGHT OF CONEC GmbH DO NOT ALTER CAD DRAWING BY HAND					tolerance		 dim. in mm	scale: 3:1		
								material: SEE SHEET 1		
					date	name		title: P.C.B. HOLE DRILLINGS D-SUB COMBINATION MALE 90° 17W2P with threaded insert, metal bracket and snap		
					drawn	20.09.12	Henneboel			
					appd.	20.09.12	Koch			
					norm					
					d-old			dwg no:		
									DIN-A3	
									sh: 2/2	
									part no: SEE SHEET 1	

