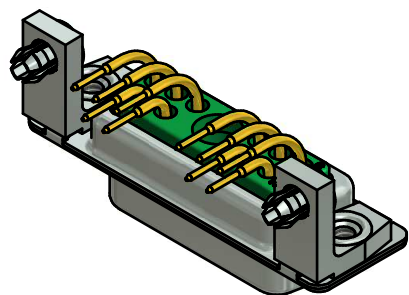
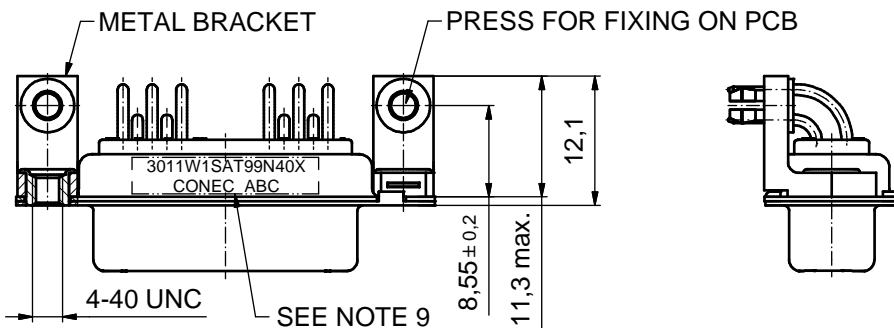
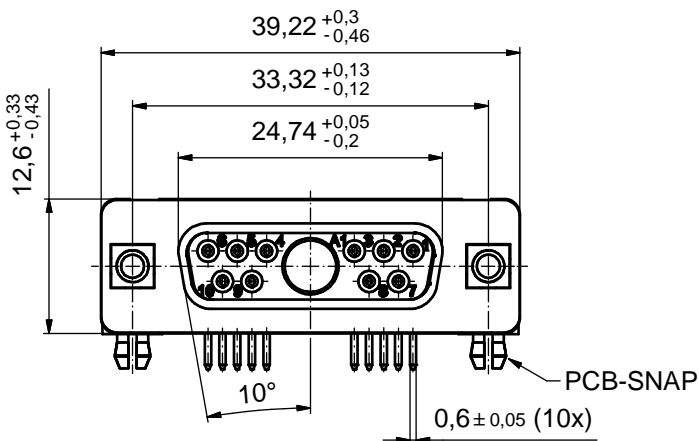
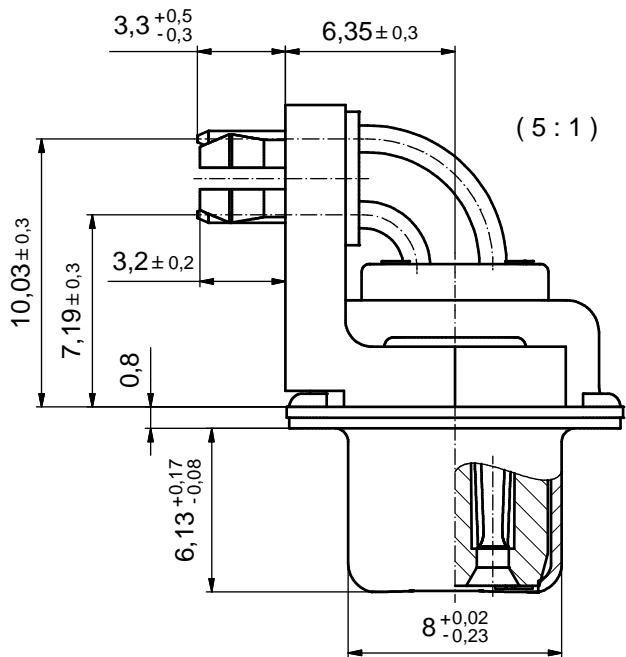


P.C.B. HOLE DRILLINGS  
(P.C.B. TOP SIDE)



NOTES:

- METALSHELLS: STEEL; min. 315µm TIN over 40-80µm NICKEL
- INSULATORS: PBT GF UL 94 V-0; GREEN
- SIGNAL CONTACTS: COPPER ALLOY  
PLATING: GOLD FLASH over NICKEL
- NO CONTACT ON POS. A1
- METAL BRACKETS: ZINC DIE CAST; 300µm COPPER / 40-120µm NICKEL / 120-200µm TIN
- THREADED INSERTS: COPPER ALLOY; min. 200µm TIN over 80µm NICKEL
- PCB-SNAPS:  $\varnothing 3,1 \pm 0,1$ mm; PCB-THICKNESS: 1,6mm
- MAXIMUM TORQUE VALUE FOR THREAD: 6 in.LB
- CONNECTOR IS PART MARKED: [3011W1SAT99N40X CONEC ABC]

Directive 2002/95/EC RoHS compliant

THIS DRAWING MAY NOT BE COPIED OR REPRODUCED IN ANY WAY, AND MAY NOT BE PASSED ON TO A THIRD PARTY WITHOUT WRITTEN PERMISSION. OWNERSHIP AND COPYRIGHT OF CONEC GmbH DO NOT ALTER CAD DRAWING BY HAND	tolerance		dim. in mm	scale: 2:1 (5:1)		
				material: SEE NOTES		
	drawn	18.08.11	name	title:		
	appd.	19.08.11	Koch	D-SUB COM. FEMALE 90°		
	norm			11W1S		
d-old			with threaded insert, metal bracket and snap			
a	Original		dwg no:	Inventor 10	DIN-A3	
rev.	description	date	13K2A2902		sh: 1	
			part no:	3011W1SAT99N40X		

**CONEC**®