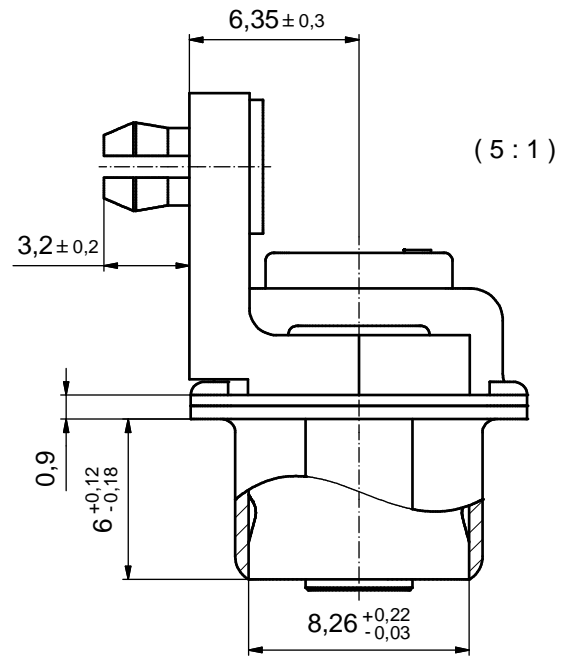
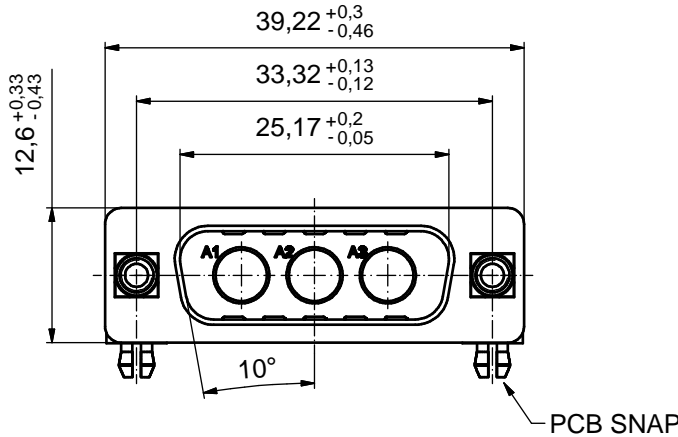


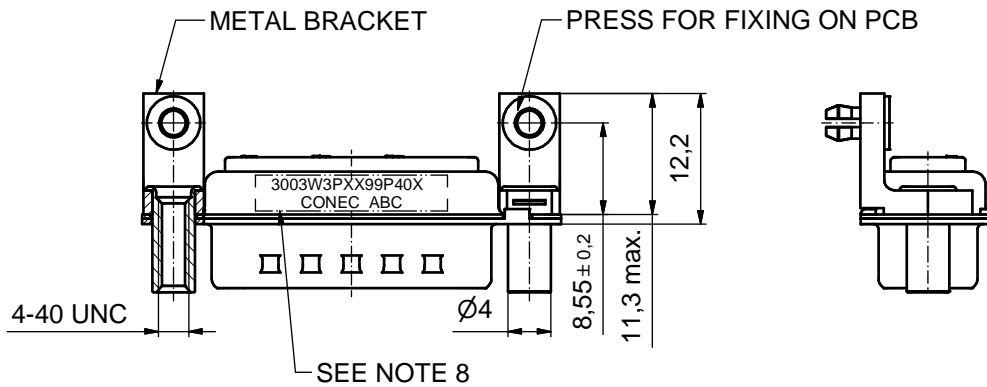
P.C.B. HOLE DRILLINGS
(P.C.B. TOP SIDE)



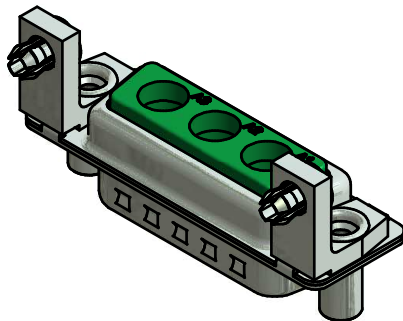
(5:1)



PCB SNAP



SEE NOTE 8



NOTES:

- METALSHELLS: STEEL; min. 315µm TIN over 40-80µm NICKEL
- INSULATORS: PBT GF UL 94 V-0; GREEN
- NO CONTACTS ON POS. A1 - A3
- METAL BRACKETS: ZINC DIE CAST; 300µm COPPER ALLOY/40-120µm NICKEL/120-200µm TIN
- THREADED LOCKS: COPPER ALLOY; min. 200µm TIN over 80µm NICKEL
- PCB-SNAPS: COPPER ALLOY; min. 200µm TIN over 80µm NICKEL
PCB-HOLES: $\varnothing 3,1 \pm 0,1$; PCB THICKNESS 1,6mm
- MAXIMUM TORQUE VALUE FOR THREAD: 6 in.LB
- CONNECTOR IS PART MARKED: 3003W3PXX99P40X CONEC ABC

Directive 2002/95/EC RoHS compliant

THIS DRAWING MAY NOT BE COPIED OR REPRODUCED IN ANY WAY, AND MAY NOT BE PASSED ON TO A THIRD PARTY WITHOUT WRITTEN PERMISSION. OWNERSHIP AND COPYRIGHT OF CONEC GmbH DO NOT ALTER CAD DRAWING BY HAND	tolerance		dim. in mm	scale: 2:1 (5:1)	
				material: SEE NOTES	
	date	name		title: D-SUB COMBINATION MALE 90° 3W3P with threaded lock, metal bracket and snap	
	drawn 01.08.2011	Strakerjahn			
	appd. 02.09.2011	Koch			
	norm			dwg no:	
	d-old			13K1A3732	
	a Original			part no: 3003W3PXX99P40X	
rev. description	date	name			DIN-A3 sh: 1