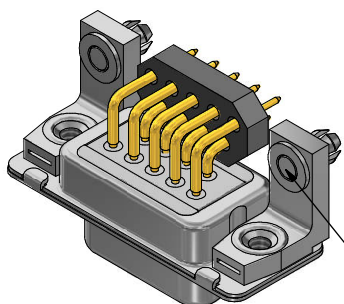


Part no. / Part marked/ Art.-Nr. / Bedruckung:	Quality class/ Gütestufe:	Contact plating/ Kontakt Veredelung:	Capacitance value/ Kapazitätswert:
24-009243	3	Gold flash over nickel <i>Gold über Nickel</i>	370 pF ± 20 %
24-009242	2	20 µin hard gold over min. 50 µin nickel <i>20 µin Gold über min. 50 µin Nickel</i>	
24-009241	1	30 µin hard gold over min. 50 µin nickel <i>30 µin Gold über min. 50 µin Nickel</i>	
24-009253	3	Gold flash over nickel <i>Gold über Nickel</i>	830 pF ± 20 %
24-009252	2	20 µin hard gold over min. 50 µin nickel <i>20 µin Gold über min. 50 µin Nickel</i>	
24-009251	1	30 µin hard gold over min. 50 µin nickel <i>30 µin Gold über min. 50 µin Nickel</i>	
24-009263	3	Gold flash over nickel <i>Gold über Nickel</i>	1300 pF ± 20 %
24-009262	2	20 µin hard gold over min. 50 µin nickel <i>20 µin Gold über min. 50 µin Nickel</i>	
24-009261	1	30 µin hard gold over min. 50 µin nickel <i>30 µin Gold über min. 50 µin Nickel</i>	

Technical specification/ *Technische Daten:*

Working voltage/ <i>Betriebsspannung:</i>	100 VDC
Current rating/ <i>Strombelastbarkeit:</i>	5 A
Insulation resistance/ <i>Isolationswiderstand:</i>	≥ 1 GΩ
Dielectric withstanding voltage/ <i>Spannungsfestigkeit (DWV):</i>	424 VDC
Temperature working range/ <i>Umgebungstemperatur:</i>	- 25 °C ... + 105 °C
Capacitance value/ <i>Kapazitätswert:</i>	see Table/ <i>siehe Tabelle</i>
Mating cycles/ <i>Steckzyklen:</i>	Quality class 1 = 500 <i>Gütestufe 1</i> Quality class 2 = 200 <i>Gütestufe 2</i> Quality class 3 = 50 <i>Gütestufe 3</i>



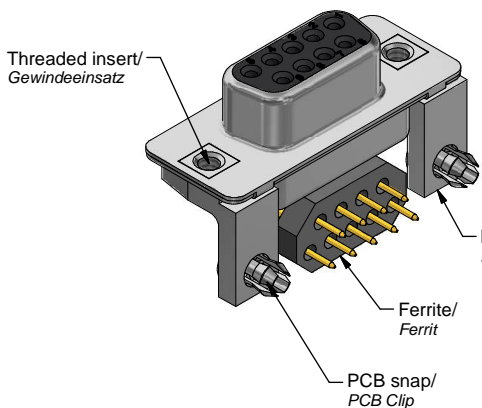
Snap, press for
fixing on PCB/
*Clip, drücken zum
Befestigen auf der
Leiterplatte*

Materials/ *Werkstoffe:*

Contact/ <i>Kontakt:</i>	Cu alloy, Au over Ni Contact tails pretinned/ <i>Kontaktspitzen verzinkt</i>
Insulator/ <i>Isolierkörper:</i>	High temp. PA UL94 V-0
Shells/ <i>Gehäuse:</i>	Steel, Sn over Ni
Metal bracket/ <i>Metallwinkel:</i>	GD-Zn, Sn over Ni
Threaded insert/ <i>Gewindeinsatz:</i>	Cu alloy, Sn over Ni
Ferrite/ <i>Ferrit:</i>	fixed with sealing compound/ <i>mit Verguss geklebt</i>
PCB snap/ <i>PCB Clip:</i>	Cu alloy, Sn over Ni

Installation specification/ *Montagedaten:*

Solder parameter/ <i>Lötparameter:</i>	
Solder preheat temperature/ <i>Vorheiztemperatur:</i>	100 °C for 30 sec./ 100 °C für 30 Sek.
Solder bath temperature/ <i>Lötbadtemperatur:</i>	260 °C for 5 sec./ 260 °C für 5 Sek.
PCB hole drillings/ <i>Leiterplattenbohrbild:</i>	see sheet 2/ <i>siehe Seite 2</i>
Recommended torque value for thread/ <i>Empfohlenes Drehmoment für Gewinde:</i>	max. 6 in.LB/ max. 67 Ncm
PCB snap for hole diameter/ <i>PCB Clip für Lochdurchmesser:</i>	∅3,1 mm
Circuit board thickness/ <i>Leiterplattenstärke:</i>	1,6 mm



Threaded insert/
Gewindeinsatz

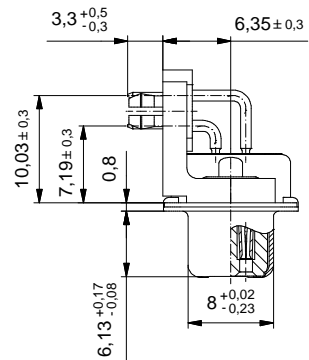
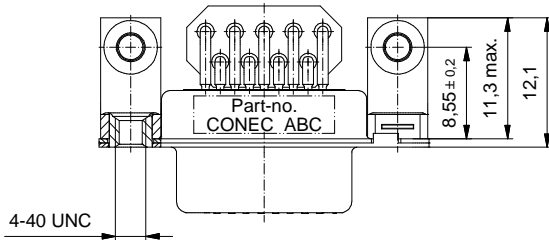
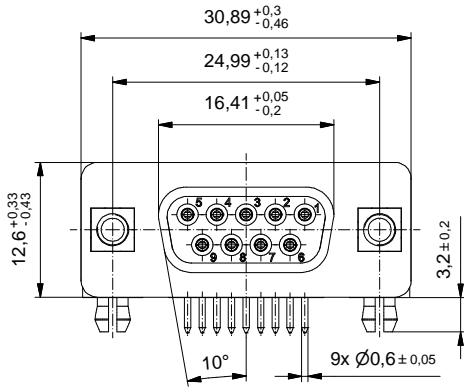
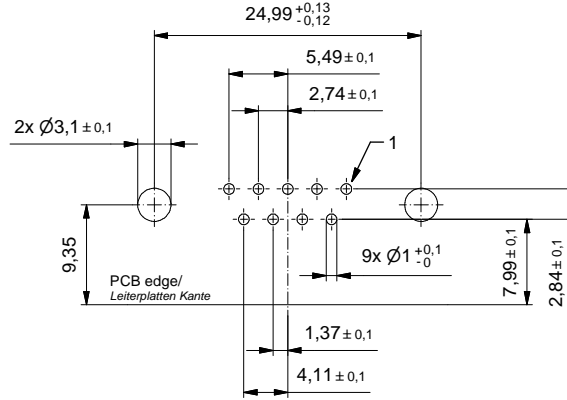
Metal bracket/
Metallwinkel

Ferrite/
Ferrit

PCB snap/
PCB Clip

		dim. in mm		D-SUB LC-Filter Female 9pos. Solder pin angled 0.318inch with metal bracket, threaded insert, ferrite, PCB-snap	
		Date/Datum	Name	D-SUB LC-Filter Buchse 9pol. Lötstift abgewinkelt 7.19mm mit Metallwinkel, Gewindeinsatz, Ferrit, PCB-Clip	
		drawn/ gez.	14.09.2022	J.Brandt	
		appd./ gepr.	15.09.2022	H.Schmidt	
Index: a Original	scale/Maßstab: 2:1	dwg no / Z.-nr.:		24K1A2339	DIN- A3
RoHS compliant/konform		CONEC®			1 / 2

PCB hole drillings
(PCB top side)
Leiterplattenbohrbild
(Leiterplatten Oberseite)



This reproduction, distribution and utilization of this document as well as the communication of its content to others without express authorization is prohibited. Offenders will be held liable for the payment of damages. We reserve the right to withdraw advertising and other information, without notice, at any time.

		dim. in mm		D-SUB LC-Filter Female 9pos. Solder pin angled 0.318inch with metal bracket, threaded insert, ferrite, PCB-snap D-SUB LC-Filter Buchse 9pol. Lötstift abgewinkelt 7.19mm mit Metallwinkel, Gewindeinsatz, Ferrit, PCB-Clip			
		Date/Datum	Name				
		drawn/ gez.	14.09.2022			J.Brandt	
		appd./ gepr.	15.09.2022	H.Schmidt			
Index: a Original	Scale/Maßstab: 2:1			dwg no / Z.-nr.: 24K1A2339	DIN-A3		
RoHS compliant/konform					2 / 2		