

Part no. / Part marked/ Art.-Nr. / Bedruckung:	Quality class/ Gütestufe:	Contact plating/ Kontakt Veredelung:	Capacitance value/ Kapazitätswert:
24-006093	3	Gold flash over nickel <i>Gold über Nickel</i>	370 pF ± 20 %
24-006092	2	20 µin hard gold over min. 50 µin nickel <i>20 µin Gold über min. 50 µin Nickel</i>	
24-006091	1	30 µin hard gold over min. 50 µin nickel <i>30 µin Gold über min. 50 µin Nickel</i>	
24-007003	3	Gold flash over nickel <i>Gold über Nickel</i>	830 pF ± 20 %
24-007002	2	20 µin hard gold over min. 50 µin nickel <i>20 µin Gold über min. 50 µin Nickel</i>	
24-007001	1	30 µin hard gold over min. 50 µin nickel <i>30 µin Gold über min. 50 µin Nickel</i>	1300 pF ± 20 %
24-007013	3	Gold flash over nickel <i>Gold über Nickel</i>	
24-007012	2	20 µin hard gold over min. 50 µin nickel <i>20 µin Gold über min. 50 µin Nickel</i>	
24-007011	1	30 µin hard gold over min. 50 µin nickel <i>30 µin Gold über min. 50 µin Nickel</i>	

Technical specification/ *Technische Daten:*

Working voltage/ <i>Betriebsspannung:</i>	100 VDC
Current rating/ <i>Strombelastbarkeit:</i>	5 A
Insulation resistance/ <i>Isolationswiderstand:</i>	≥ 1 GΩ
Dielectric withstanding voltage/ <i>Spannungsfestigkeit (DWV):</i>	424 VDC
Temperature working range/ <i>Umgebungstemperatur:</i>	- 25 °C ... + 105 °C

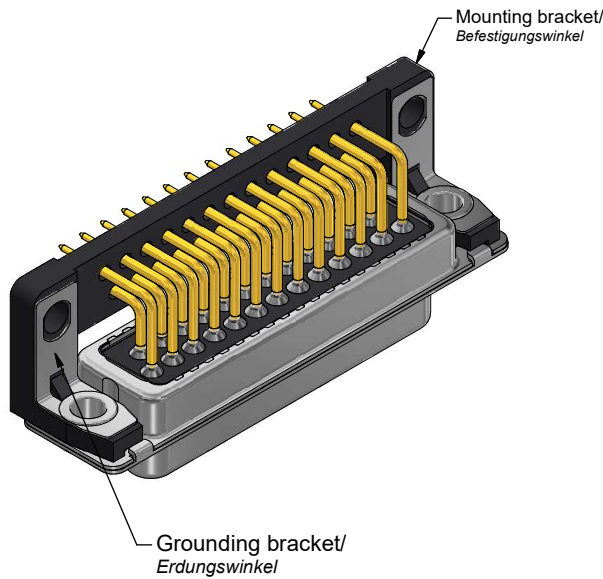
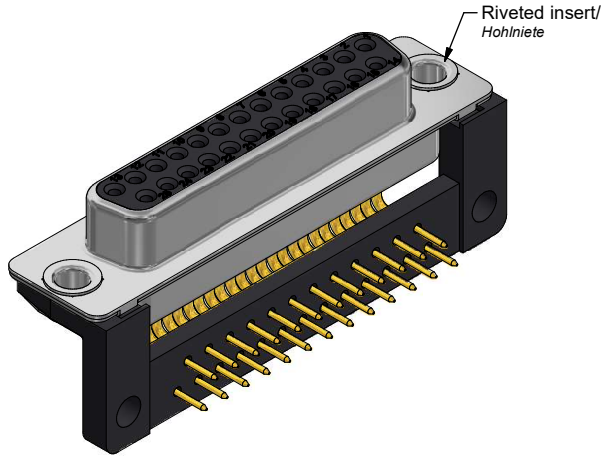
Capacitance value/ <i>Kapazitätswert:</i>	see Table/ <i>siehe Tabelle</i>
Mating cycles (see table)/ <i>Steckzyklen</i> (siehe Tabelle):	Quality class 1 = 500 <i>Gütestufe 1</i> Quality class 2 = 200 <i>Gütestufe 2</i> Quality class 3 = 50 <i>Gütestufe 3</i>

Materials/ *Werkstoffe:*

Contact/ <i>Kontakt:</i>	Cu alloy, Au over Ni Contact tails pretinned/ <i>Kontaktspitzen verzinkt</i>
Insulator/ <i>Isolierkörper:</i>	High temp. PA UL 94 V-0
Shell/ <i>Gehäuse:</i>	Steel, Sn over Ni
Mounting bracket/ <i>Befestigungswinkel:</i>	High temp. PA UL 94 V-0
Riveted insert/ <i>Hohl Niet:</i>	Cu Zn, Sn
Grounding bracket/ <i>Erdungswinkel:</i>	Cu alloy, Sn over Ni

Installation specification/ *Montagedaten:*

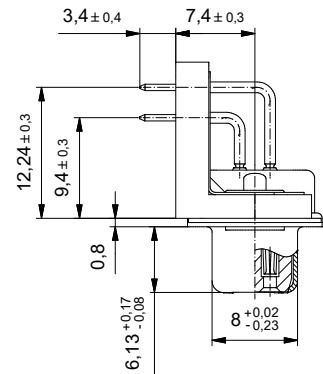
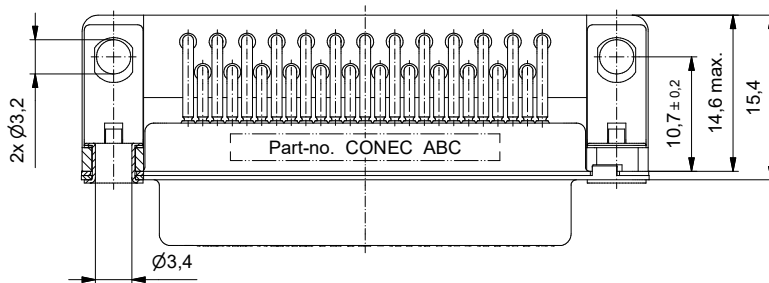
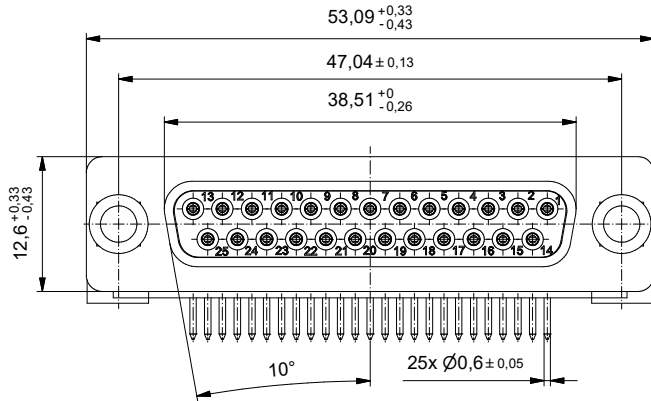
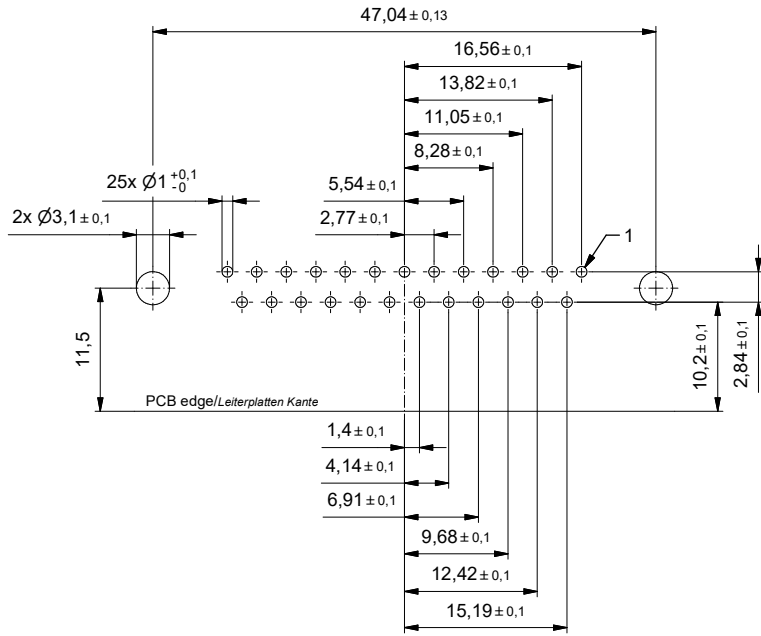
Solder parameter/ <i>Lötparameter:</i>	
Solder preheat temperature/ <i>Vorheiztemperatur:</i>	100 °C for 30 sec./ <i>100 °C für 30 Sek.</i>
Solder bath temperature/ <i>Lötbadtemperatur:</i>	260 °C for 5 sec./ <i>260 °C für 5 Sek.</i>
PCB hole drillings/ <i>Leiterplattenbohrbild:</i>	see sheet 2/ <i>siehe Seite 2</i>

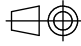



		dim. in mm	D-SUB C-Filter Female 25pos. Solder pin angled 0,37 inch with riveted insert, mounting bracket and grounding bracket	
		Date/Datum	Name	D-SUB C-Filter Buchse 25pol. Lötstift abgewinkelt 9,40 mm mit Hohl Niete, Befestigungswinkel und Erdungswinkel
		drawn/ges.	16.09.2022	J.Brandt
		appd./gepr.	10.10.2022	H.Schmidt
Index: a Original	Scale/ Maßstab:	2:1		dwg no / Z.-nr.: 24K1A2357
RoHS compliant/ konform			DIN-A3	1 / 2

The reproduction, distribution and sale of this document as well as the communication of its content to others without express authorization is prohibited. Offenders will be held liable for the payment of damages. We reserve the right to withdraw advertising and/or to terminate the use of the website and/or to delete the offending content and/or to report to the authorities.

PCB hole drillings
(PCB top side)
Leiterplattenbohrbild
(Leiterplatten Oberseite)



		 dim. in mm		D-SUB C-Filter Female 25pos. Solder pin angled 0,37 inch with riveted insert, mounting bracket and grounding bracket	
		Date/Datum	Name	D-SUB C-Filter Buchse 25pol. Lötstift abgewinkelt 9,40 mm mit Hohlriete, Befestigungswinkel und Erdungswinkel	
		drawn/ges.	16.09.2022	J.Brandt	
		appd./gepr.	10.10.2022	H.Schmidt	
Index: a Original	Scale/Maßstab: 2:1			dwg no / Z.-nr.: 24K1A2357	DIN-A3
RoHS compliant/ konform					2 / 2

The reproduction, distribution and sale of this document as well as the communication of its contents to others without express authorization is prohibited. Offenders will be held liable for the payment of damages. For further information on copyright law please refer to the website: www.schaeffler.com.