

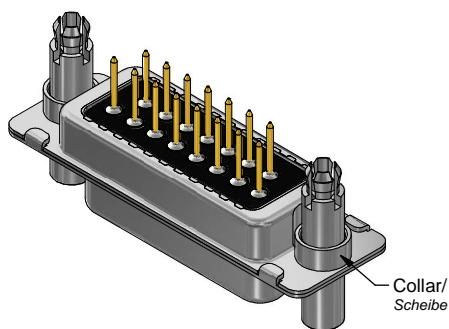
| Part no. / Part marked/ Art.-Nr. / Bedruckung: | Quality class/ Gütestufe: | Contact plating/ Kontakt Veredelung: | Capacitance value/ Kapazitätswert: |
|---|------------------------------|--|---------------------------------------|
| 24-004783 | 3 | Gold flash over nickel <i>Gold über Nickel</i> | 370 pF ± 20 % |
| 24-004782 | 2 | 20 µin hard gold over min. 50 µin nickel <i>20 µin Gold über min. 50 µin Nickel</i> | |
| 24-004781 | 1 | 30 µin hard gold over min. 50 µin nickel <i>30 µin Gold über min. 50 µin Nickel</i> | |
| 24-004793 | 3 | Gold flash over nickel <i>Gold über Nickel</i> | 830 pF ± 20 % |
| 24-004792 | 2 | 20 µin hard gold over min. 50 µin nickel <i>20 µin Gold über min. 50 µin Nickel</i> | |
| 24-004791 | 1 | 30 µin hard gold over min. 50 µin nickel <i>30 µin Gold über min. 50 µin Nickel</i> | |
| 24-004803 | 3 | Gold flash over nickel <i>Gold über Nickel</i> | 1300 pF ± 20 % |
| 24-004802 | 2 | 20 µin hard gold over min. 50 µin nickel <i>20 µin Gold über min. 50 µin Nickel</i> | |
| 24-004801 | 1 | 30 µin hard gold over min. 50 µin nickel <i>30 µin Gold über min. 50 µin Nickel</i> | |

Technical specification/ *Technische Daten:*

| | |
|--|--|
| Working voltage/ <i>Betriebsspannung:</i> | 100 VDC |
| Current rating/ <i>Strombelastbarkeit:</i> | 5 A |
| Insulation resistance/ <i>Isolationswiderstand:</i> | ≥ 1 GΩ |
| Dielectric withstanding voltage/ <i>Spannungsfestigkeit (DWV):</i> | 424 VDC |
| Temperature working range/ <i>Umgebungstemperatur:</i> | - 25 °C ... + 105 °C |
| Capacitance value/ <i>Kapazitätswert:</i> | see table/ <i>siehe Tabelle</i> |
| Mating cycles (see table)/ <i>Steckzyklen</i> (siehe Tabelle): | Quality class 1 = 500 <i>Gütestufe 1</i> Quality class 2 = 200 <i>Gütestufe 2</i> Quality class 3 = 50 <i>Gütestufe 3</i> |

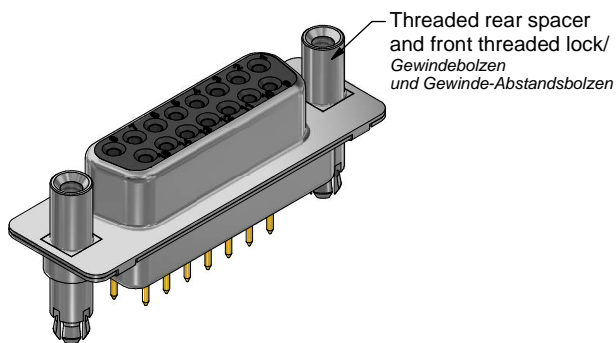
Materials/ *Werkstoffe:*

| | |
|--|--|
| Contact/ <i>Kontakt:</i> | Cu alloy, Au over Ni Contact tails pretinned/ <i>Kontaktspitzen verzinkt</i> |
| Insulator/ <i>Isolierkörper:</i> | High temp. PA UL 94 V-0 |
| Shell/ <i>Gehäuse:</i> | Steel, Sn over Ni |
| Collar/ <i>Scheibe:</i> | Cu alloy, Sn over Ni |
| Threaded rear spacer and front threaded lock/ <i>Gewindebolzen</i> und <i>Gewinde-Abstandsbolzen:</i> | Cu alloy, Sn over Ni |



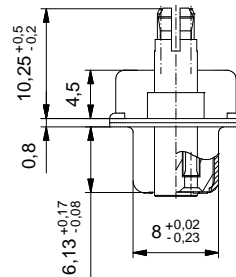
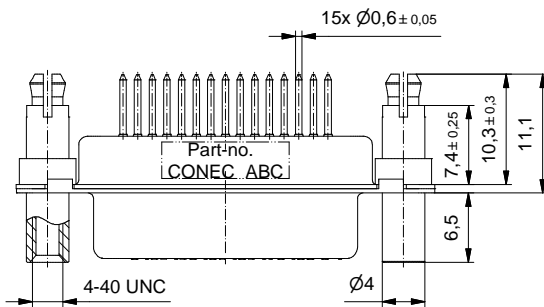
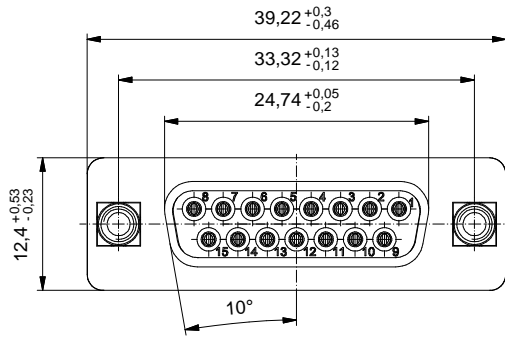
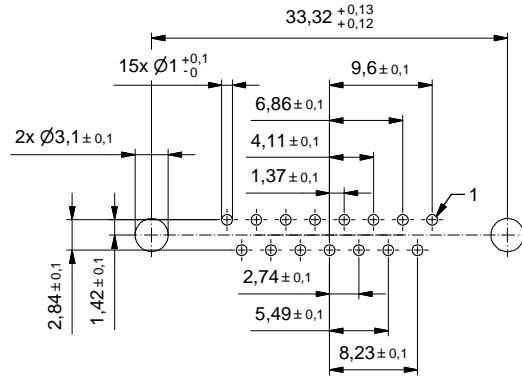
Installation specification/ *Montagedaten:*

| | |
|---|--|
| Solder parameter/ <i>Lötparameter:</i> | |
| Solder preheat temperature/ <i>Vorheiztemperatur:</i> | 100 °C for 30 sec./ <i>100 °C für 30 Sek.</i> |
| Solder bath temperature/ <i>Lötbadtemperatur:</i> | 260 °C for 5 sec./ <i>260 °C für 5 Sek.</i> |
| Recommended torque value for thread/ <i>Empfohlenes Drehmoment</i> für <i>Gewinde:</i> | max. 6 in.LB/ <i>max. 67 Ncm</i> |
| PCB clip for hole diameter/ <i>PCB Snap für</i> <i>Lochdurchmesser:</i> | ∅3,1 mm |
| Circuit board thickness/ <i>Leiterplattenstärke:</i> | 1,6 mm |
| PCB hole drillings/ <i>Leiterplattenbohrbild:</i> | see sheet 2/ <i>siehe Seite 2</i> |



| | | | | | |
|--------------------------------|------------------------|------------------------|------------|--|--------------------------------------|
| | | dim. in mm | | D-SUB C-Filter Female 15pos. with threaded rear spacer and front threaded lock <i>D-SUB C-Filter Buchse 15pol.</i> mit <i>Gewindebolzen</i> und <i>Gewinde-Abstandsbolzen</i> | |
| | | Date/ <i>Datum</i> | Name | | |
| | | drawn/ <i>gez.</i> | 23.05.2022 | Unkrüer | dwg no / <i>Z.-nr.:</i> 24K1A2273 |
| | | appd./ <i>gepr.</i> | 29.06.2022 | Lehmenkühler | |
| Index: a Original | Scale/ <i>Maßstab:</i> | 2:1 | | 1 / 2 | |
| RoHS compliant/ <i>konform</i> | | CONEC ® | | | |

PCB hole drillings
(PCB top side)/
Leiterplattenbohrbild
(Leiterplatten Oberseite)



The reproduction, distribution and utilization of this document as well as the communication of its contents to others without express authorization is prohibited. Offenders will be held liable for the payment of damages. We reserve the right to withdraw advertising space at any time without notice. In the event of a change in ownership, the rights of the publisher shall remain reserved.

| | | | | | |
|------------------------|-----------------------|--------------------------|-----------------------------|---|------------|
| | | dim. in mm | | D-SUB C-Filter Female 15pos. with threaded rear spacer and front threaded lock D-SUB C-Filter Buchse 15pol. mit Gewindebolzen und Gewinde-Abstandsbolzen | |
| | | Date/Datum 23.05.2022 | Name Unkrüer | | |
| | | drawn/gez. 29.06.2022 | appd./gepr. Lehmenkühler | | |
| Index: a Original | scale/Maßstab: 2:1 | | | dwg no / Z.-nr.: 24K1A2273 | DIN- A3 |
| RoHS compliant/konform | | | | 2 / 2 | |