

Part no. / Part marked/ Art.-Nr. / Bedruckung:	Quality class/ Gütestufe:	Contact plating/ Kontakt Veredelung:	Capacitance value/ Kapazitätswert:
24-001603	3	Gold flash over nickel <i>Gold über Nickel</i>	370 pF ± 20 %
24-001602	2	20 µin hard gold over min. 50 µin nickel <i>20 µin Gold über min. 50 µin Nickel</i>	
24-001601	1	30 µin hard gold over min. 50 µin nickel <i>30 µin Gold über min. 50 µin Nickel</i>	
24-001613	3	Gold flash over nickel <i>Gold über Nickel</i>	830 pF ± 20 %
24-001612	2	20 µin hard gold over min. 50 µin nickel <i>20 µin Gold über min. 50 µin Nickel</i>	
24-001611	1	30 µin hard gold over min. 50 µin nickel <i>30 µin Gold über min. 50 µin Nickel</i>	
24-001623	3	Gold flash over nickel <i>Gold über Nickel</i>	1300 pF ± 20 %
24-001622	2	20 µin hard gold over min. 50 µin nickel <i>20 µin Gold über min. 50 µin Nickel</i>	
24-001621	1	30 µin hard gold over min. 50 µin nickel <i>30 µin Gold über min. 50 µin Nickel</i>	

**Technical specification/
Technische Daten:**

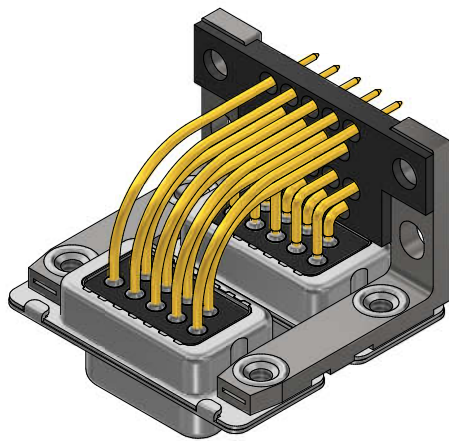
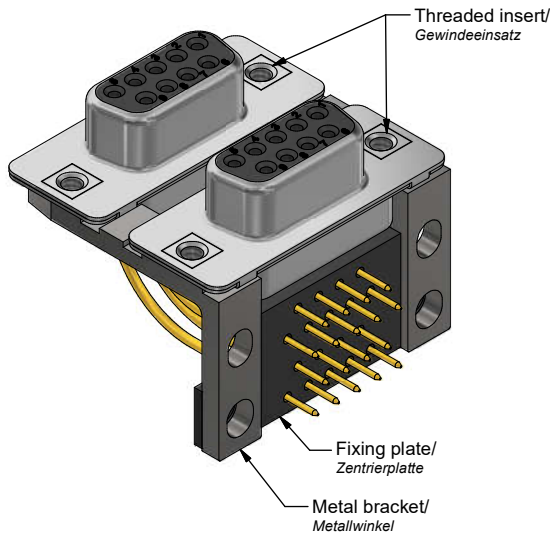
Working voltage/ Betriebsspannung:	100 VDC
Current rating/ Strombelastbarkeit:	5 A
Insulation resistance/ Isolationswiderstand:	≥ 1 GΩ
Dielectric withstanding voltage/ Spannungsfestigkeit (DWN):	424 VDC
Temperature working range/ Umgebungstemperatur:	- 25 °C ... + 105 °C
Capacitance value/ Kapazitätswert:	see table/ siehe Tabelle
Mating cycles (see table)/ Steckzyklen (siehe Tabelle):	Quality class 1 = 500 Gütestufe 1 Quality class 2 = 200 Gütestufe 2 Quality class 3 = 50 Gütestufe 3

**Materials/
Werkstoffe:**

Contact/ Kontakt:	Cu alloy, Au over Ni Contact tails pretinned/ Kontaktspitzen verzinkt
Insulator/ Isolierkörper:	High temp. PA UL94 V-0
Shells/ Gehäuse:	Steel, Sn over Ni
Metal bracket/ Metallwinkel:	GD-Zn, Sn over Ni
Threaded insert/ Gewindeinsatz:	Cu alloy, Sn over Ni
Fixing plate/ Zentrierplatte:	High temp. PA UL94 V-0

**Installation specification/
Montagedaten:**

Solder parameter/ Lötparameter:	
Solder preheat temperature/ Vorheiztemperatur:	100 °C for 30 sec./ 100 °C für 30 Sek.
Solder bath temperature/ Lötbadtemperatur:	260 °C for 5 sec./ 260 °C für 5 Sek.
PCB hole drillings/ Leiterplattenbohrbild:	see sheet 2/ siehe Seite 2
Recommended torque value for thread/ Empfohlenes Drehmoment für Gewinde:	max. 6 in.LB/ max. 67 Ncm

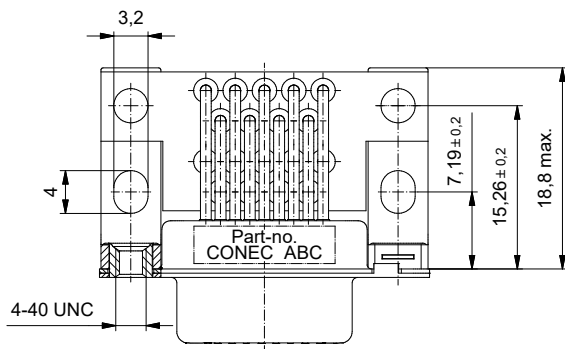
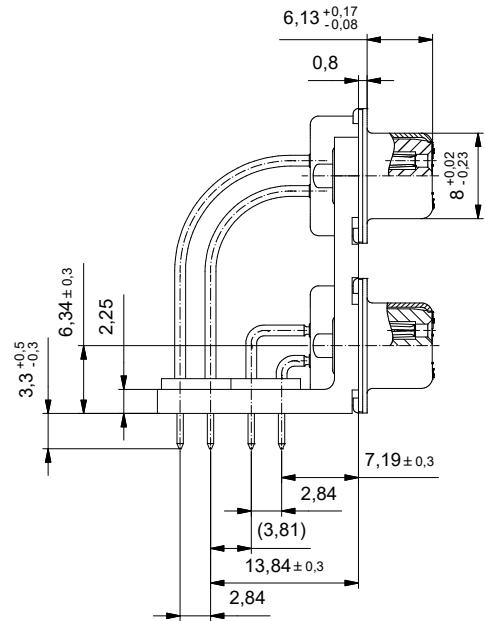
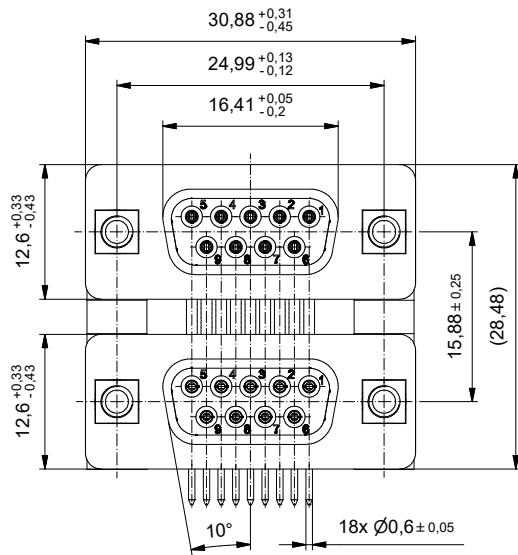
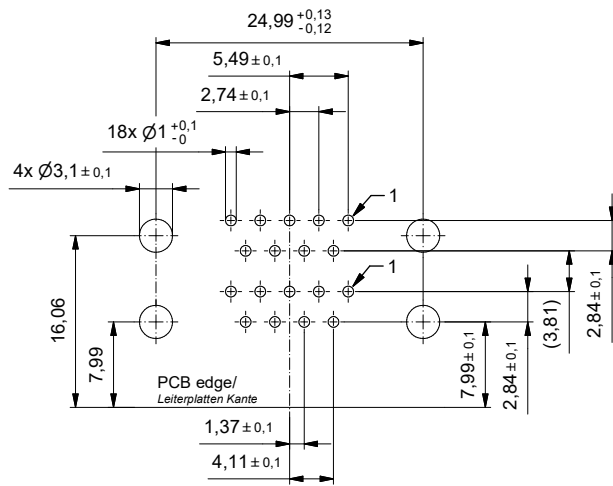


		dim. in mm	D-SUB Filter DUAL PORT 15.88mm 9pos. Female / 9pos. Female threaded insert, metal bracket and fixing plate	
		Date/Datum	D-SUB Filter DUAL PORT 15.88mm 9pol. Buchse / 9pol. Buchse Gewindeinsatz, Metallwinkel und Zentrierplatte	
		Name		
		drawn/gez.	29.09.2021 Lehmenkühler	
		appd./gepr.	29.09.2021 Fischer	
Index: a Original	scale/ Maßstab:	2:1	dwg no / Z.-nr.:	24K1A2066
RoHS compliant/ konform				DIN-A3
				1 / 2

CONEC

This reproduction, distribution and utilization of this document as well as the communication of its contents to others without express authorization is prohibited. Offenders will be held liable for the payment of damages. For further information on other legal matters, please refer to our website: http://www.conec.com. In order to avoid liability, please refer to our website: http://www.conec.com. In order to avoid liability, please refer to our website: http://www.conec.com.

PCB hole drillings
(PCB top side) /
Leiterplattenbohrbild
(Leiterplatten Oberseite)



Index: a Original	scale/ Maßstab: 2:1		dim. in mm	D-SUB Filter DUAL PORT 15.88mm 9pos. Female / 9pos. Female threaded insert, metal bracket and fixing plate	DIN-A3 2 / 2											
			<table border="1"> <tr> <td>drawn/ gezeichnet</td> <td>Date/ Datum</td> <td>Name</td> </tr> <tr> <td>appd./ gezeichnet</td> <td>29.09.2021</td> <td>Lehmenkühler</td> </tr> <tr> <td></td> <td>29.09.2021</td> <td>Fischer</td> </tr> </table>	drawn/ gezeichnet		Date/ Datum	Name	appd./ gezeichnet	29.09.2021	Lehmenkühler		29.09.2021	Fischer	<table border="1"> <tr> <td colspan="3">D-SUB Filter DUAL PORT 15.88mm 9pol. Buchse / 9pol. Buchse Gewindeeinsetz, Metallwinkel und Zentrierplatte</td> </tr> <tr> <td>dwg no / Z.-nr.:</td> <td>24K1A2066</td> <td></td> </tr> </table>	D-SUB Filter DUAL PORT 15.88mm 9pol. Buchse / 9pol. Buchse Gewindeeinsetz, Metallwinkel und Zentrierplatte	
drawn/ gezeichnet	Date/ Datum	Name														
appd./ gezeichnet	29.09.2021	Lehmenkühler														
	29.09.2021	Fischer														
D-SUB Filter DUAL PORT 15.88mm 9pol. Buchse / 9pol. Buchse Gewindeeinsetz, Metallwinkel und Zentrierplatte																
dwg no / Z.-nr.:	24K1A2066															
RoHS compliant/ konform																

This reproduction, distribution and utilization of this document as well as the communication of its contents to others without express authorization is prohibited. Offenders will be held liable for the payment of damages. For further information on our legal notices, please refer to our website: www.conec.com.