

6

5

4

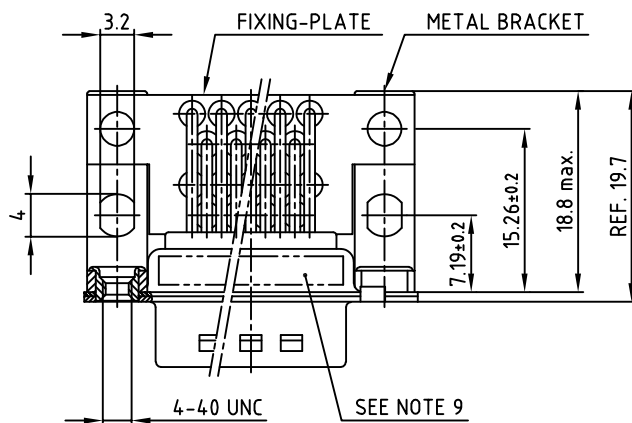
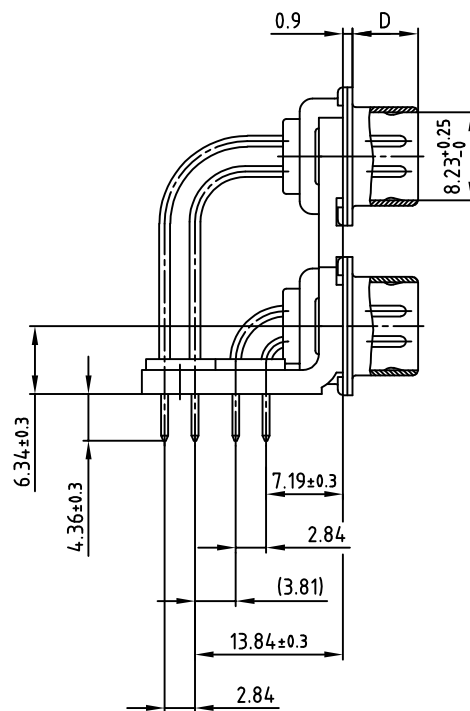
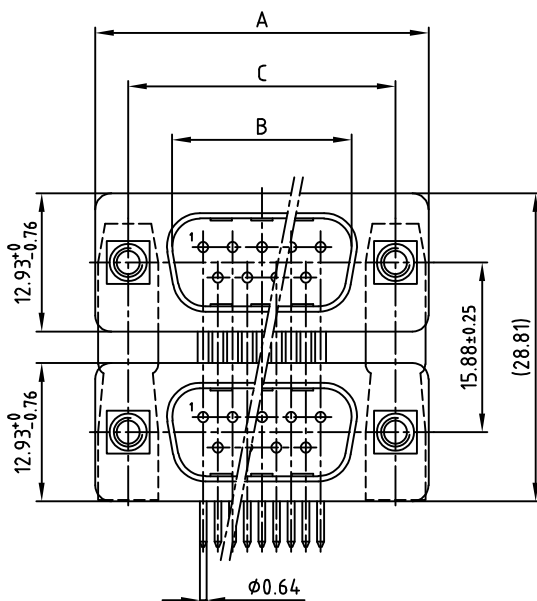
3

2

1

used for: D-SUB Dual Port

POS.	A-0.76	B+0.25	C	D-0.3	Part-NO.
2x15	39.52	25.12	33.30 ^{+0.15} _{-0.1}	6.12	163A15209X
2x25	53.42	38.84	47.04 ^{±0.13}	5.99	163A15219X
2x37	69.70	55.30	63.50 ^{±0.13}	5.99	163A15229X



NOTES:

- METALSHELLS: STEEL; min. 315pin TIN over 40-80pin NICKEL
- INSULATORS: PBT GF UL 94 V-0, BLACK
- CONTACTS: COPPER ALLOY
PLATING: 8pin HARD GOLD OVER min. 50pin NICKEL
- METAL BRACKET: STEEL; min. 320pin TIN over 80pin NICKEL
- THREADED INSERT: COPPER ALLOY; min. 200pin TIN over 80pin NICKEL
- FIXING-PLATE: PBT GF UL 94 V-0, BLACK
- P.C.B. HOLE DRILLINGS ON SHEET 2 + 3
- MAXIMUM TORQUE VALUE FOR THREAD: 6 in.LB
- CONNECTOR IS PART MARKED: **PART-NO. CONEC ABC**

RoHS compliant

APPROVAL * FREIGABE * DEBLOCAGE * AUTORIZACION * APPROVAL	
CUSTOMER APPROVAL DATE:	
NAME:	TITLE:
COMPANY NAME:	
APPROVAL * FREIGABE * DEBLOCAGE * AUTORIZACION * APPROVAL	

THIS DRAWING MAY NOT BE COPIED OR REPRODUCED IN ANY WAY, AND MAY NOT BE PASSED ON TO A THIRD PARTY WITHOUT WRITTEN PERMISSION.

OWNERSHIP AND COPYRIGHT OF CONEC GmbH

DO NOT ALTER CAD DRAWING BY HAND

rev.	description	date	name
a	Origin		

tolerance	dim. in mm
2006	date
drawn	09.10.
appd.	10.10.
norm	DIN 41652
d-old	

scale:	2:1
material:	SEE NOTES
title:	
DUAL PORT 15.88mm	
MALE / MALE 2x15pos. - 2x37pos.	
with threaded insert	
dwg no:	AutoCAD 2006
16K1A1909	
part no:	SEE TABLE

6

5

4

2

1

6

5

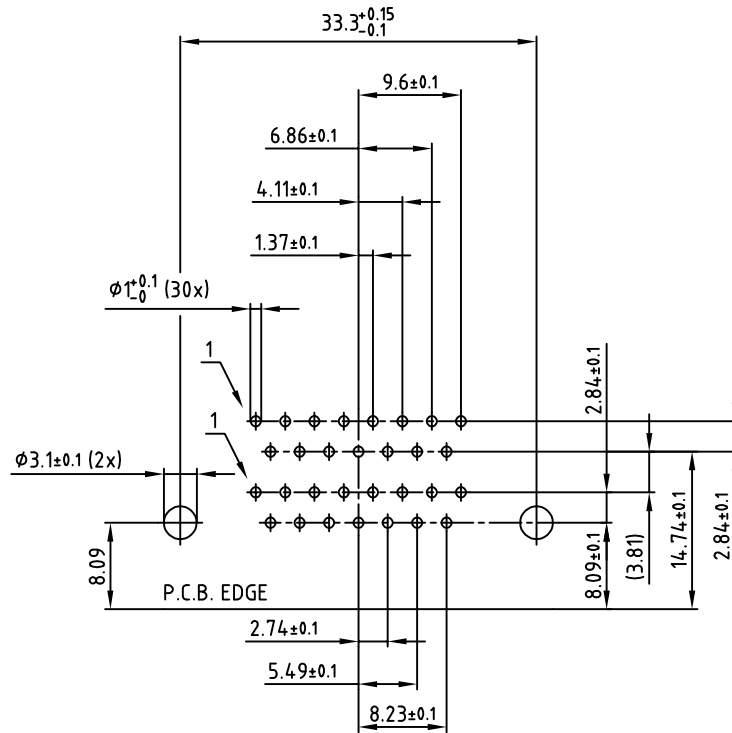
4

3

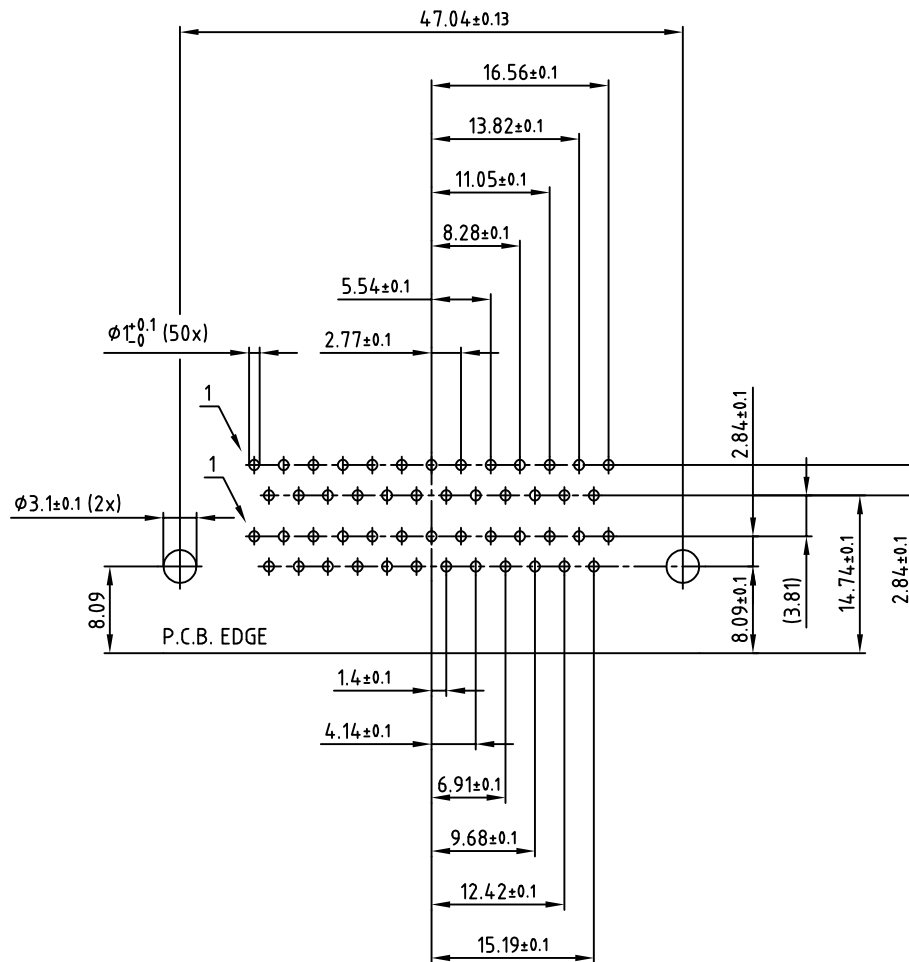
2

1

used for: D-SUB Dual Port



2x15pos.



2x25pos.

APPROVAL * FREIGABE * DEBLOCAGE * AUTORIZACION * APPROVAL	
CUSTOMER APPROVAL DATE:	
NAME:	TITLE:
COMPANY NAME:	
APPROVAL * FREIGABE * DEBLOCAGE * AUTORIZACION * APPROVAL	

THIS DRAWING MAY NOT BE COPIED OR REPRODUCED IN ANY WAY, AND MAY NOT BE PASSED ON TO A THIRD PARTY WITHOUT WRITTEN PERMISSION. OWNERSHIP AND COPYRIGHT OF CONEC GmbH DO NOT ALTER CAD DRAWING BY HAND

rev.	description	date	name
a	Origin		

tolerance		dim. in mm	
2006	date	name	
drawn	09.10.	Lehmenkühler	
appd.	10.10.	Mickenbecker	
norm	DIN 41652		
d-old			

CONEC

scale:	2:1
material:	SEE SHEET 1
title:	
P.C.B. HOLE DRILLINGS DUAL PORT 15.88mm MALE / MALE with threaded insert	
dwg no:	AutoCAD 2006
16K1A1909	
part no:	SEE SHEET 1

6

5

4

2

1

4

3

2

1

used for:

D-SUB Dual Port

63.5±0.13

24.84±0.1

22.1±0.1

19.33±0.1

16.56±0.1

13.82±0.1

11.05±0.1

8.28±0.1

5.54±0.1

2.77±0.1

 $\phi 1^{+0.1}_{-0}$ (74x) $\phi 3.1 \pm 0.1$ (2x)

1

1

8.09

P.C.B. EDGE

1.4±0.1

2.84±0.1

8.09±0.1

(3.81)

14.74±0.1

2.84±0.1

4.14±0.1

6.91±0.1

9.68±0.1

12.42±0.1

15.19±0.1

17.96±0.1

20.7±0.1

23.47±0.1

2x37 pos.

APPROVAL * FREIGABE * DEBLOCAGE * AUTORIZACION * APPROVAL	
CUSTOMER APPROVAL DATE:	
NAME:	TITLE:
COMPANY NAME:	
APPROVAL * FREIGABE * DEBLOCAGE * AUTORIZACION * APPROVAL	

THIS DRAWING MAY NOT BE COPIED OR
REPRODUCED IN ANY WAY, AND MAY NOT
BE PASSED ON TO A THIRD PARTY WITHOUT
WRITTEN PERMISSION.
OWNERSHIP AND COPYRIGHT OF CONEC GmbH
DO NOT ALTER CAD DRAWING BY HAND

				tolerance		
				2006	date	name
				drawn	09.10.	Lehmenkühler
				appd.	10.10.	Mickenbecker
				norm		
				d-old		
a	Origin			CONEC [®]		
rev.	description	date	name			



dim. in mm

scale: 2:1
material: SEE SHEET 1

title:
P.C.B. HOLE DRILLINGS
DUAL PORT 15.88mm MALE / MALE
with threaded insert

dwg no: AutoCAD 2006 DIN-A
16K1A1909 4
sh:3/3

part no: SEE SHEET 1