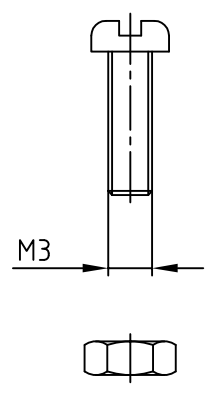
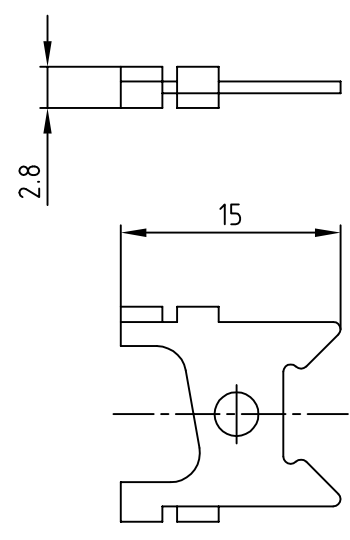
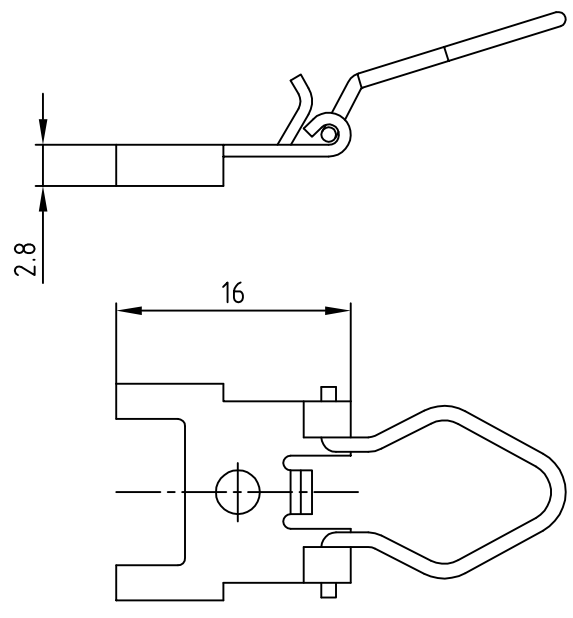


used for: D-SUB



- (b) 1 SET OF SPRING LOCKING CONSISTS OF:
 2 METAL BOWS - AISI 304 (SUS 304), Ni plated
 2 METAL BOW FASTENER JIS 63141, Ni plated
 2 CLAMPS JIS 63141, Ni plated
 4 SCREWS SK5, Ni plated
 4 NUTS SK5, Ni plated

Directive 2002/95/EC
 „RoHS“
 Compliant

THIS DRAWING MAY NOT BE COPIED OR REPRODUCED IN ANY WAY, AND MAY NOT BE PASSED ON TO A THIRD PARTY WITHOUT WRITTEN PERMISSION.
 OWNERSHIP AND COPYRIGHT OF CONEC GmbH
 DO NOT ALTER CAD DRAWING BY HAND

| | | | | tolerance | | | | scale: 2:1 | | | |
|-------|-------------|------------|-------|-----------|--------|--------------------------|--|--------------------------|--|---------|--|
| | | | | 2005 | date | name | | material: | | | |
| | | | | drawn | 04.08. | Lehmenkühler | | title: SPRING LOCKING | | | |
| | | | | appd. | 04.08. | Mickenbecker | | | | | |
| | | | | norm | | | | | | | |
| | | | | d-old | | | | dwg no: AutoCAD 2004 | | | |
| 1 x b | Ä2971 | 04.04.2008 | Sonne | | | title: SPRING LOCKING | | DIN-A | | | |
| a | Origin | | | | | | | 16K1A1475 | | 4 | |
| rev. | description | date | name | | | | | part no: 160X10239X | | sh: 1/1 | |