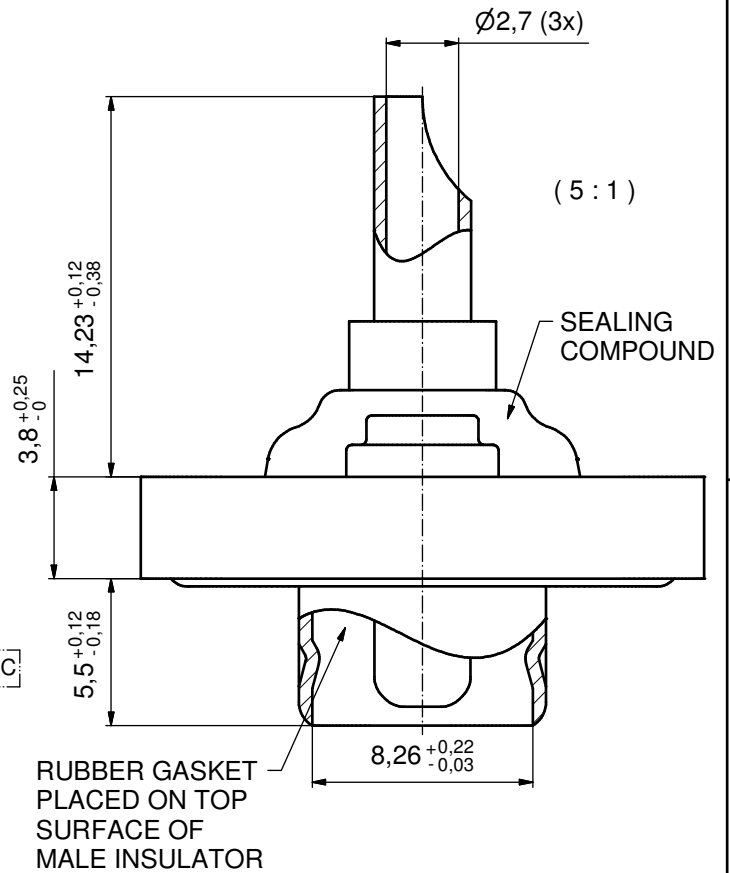
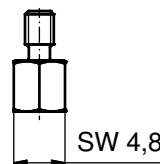
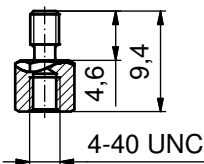
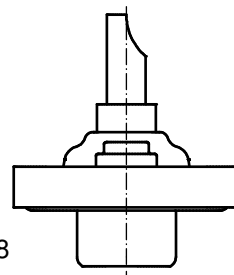
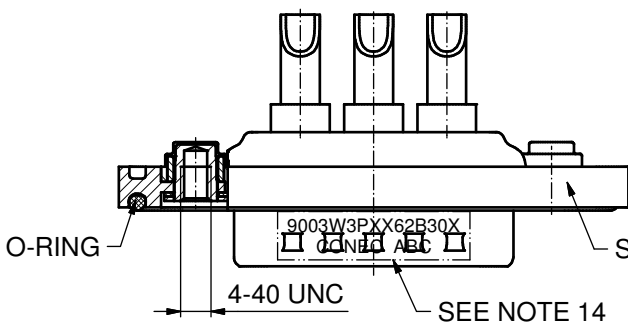
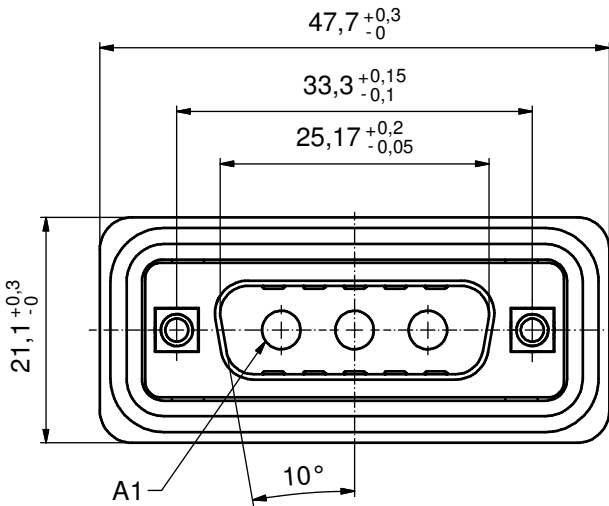


NOTES:

1. RECOMMENDED SOLDER INSTRUCTION SEE SHEET 2
2. METALSHELLS: STAINLESS STEEL
3. INSULATOR: PBT GF UL 94 V-0, GREEN
4. HIGH POWER CONTACTS 20A: COPPER ALLOY
PLATING MATING AREA: GOLD FLASH over NICKEL
PLATING TERMINATION SIDE: GOLD FLASH over NICKEL
SOLDER CUP ACCEPTS CABLE AWG 12-14
5. THREADED INSERTS: COPPER ALLOY;
min. 200µin TIN over 80µin NICKEL
6. COLLARS: COPPER ALLOY; min. 200µin TIN over 80µin NICKEL
7. HEXLOCKING SCREWS: STAINLESS STEEL
8. FRAME: PA GF UL 94 V-0; BLACK
9. O-RING: SILICON; BLUE
10. SEALING COMPOUND: PUR; BLUE
11. RUBBER GASKET: TPE; BLACK
12. RECOMMENDED PANEL CUT-OUT ON SHEET 2
13. RECOMMENDED TORQUE FOR MOUNTING SCREW
35Ncm (3.1 in.LB) / max. 40Ncm (3.5 in.LB)
14. CONNECTOR IS PART MARKED: 9003W3PXX62B30X CONEC ABC



AT ALL TIMES WATER RESISTANT CONNECTORS NOT IN USE SHOULD BE COVERED WITH A CONEC WATER RESISTANT CAP OR WATER TIGHT HOOD.



Directive 2002/95/EC RoHS compliant

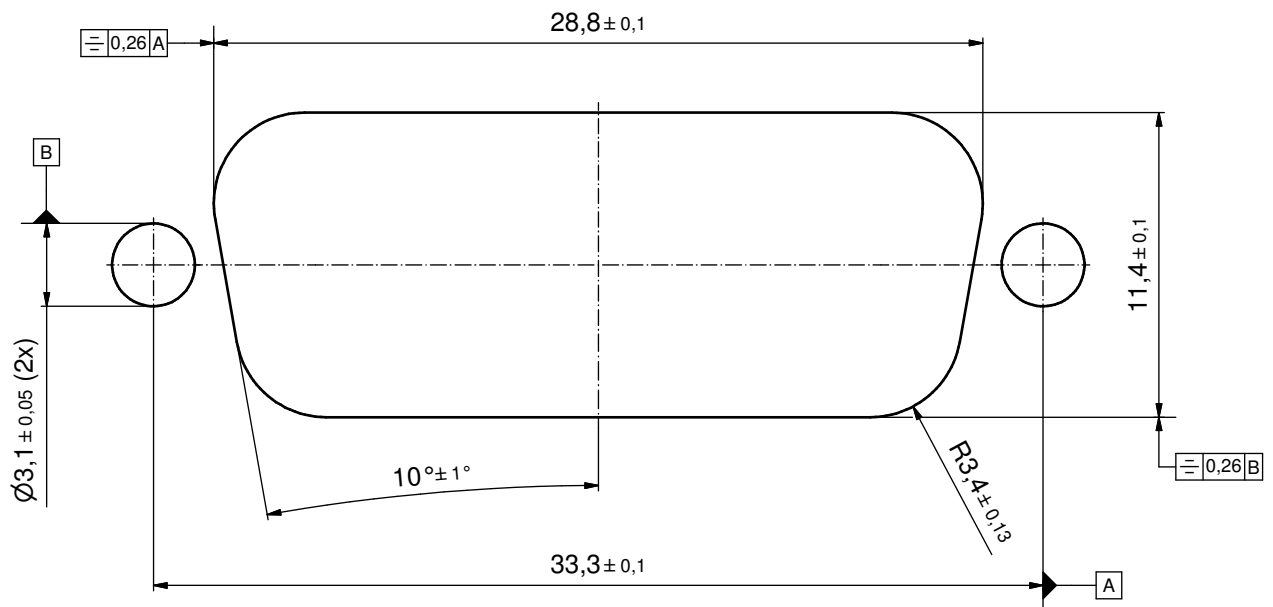
THIS DRAWING MAY NOT BE COPIED OR REPRODUCED IN ANY WAY, AND MAY NOT BE PASSED ON TO A THIRD PARTY WITHOUT WRITTEN PERMISSION. OWNERSHIP AND COPYRIGHT OF CONEC GmbH DO NOT ALTER CAD DRAWING BY HAND	tolerance		dim. in mm		scale:	2:1 (5:1)		
					material:	SEE NOTES		
	drawn	21.08.12	Henneboel		title: D-SUB COMBINATION MALE 3W3P SOLDER CUP with threaded insert and hexlocking screw			
	appd.	21.08.12	Fischer					
	norm							
	d-old							
	rev.	a	Original			dwg no:	15K1A1125	DIN-A3
	description					part no:	9003W3PXX62B30X	sh: 1/2



Solder Instruction

1. Cable should be prepared for soldering. The cable/wires must be pretinned.
2. Insert cable/wire into solder cup.
3. Operate the soldering iron at 350°C, 100 Watt max. and use a pencil tip.
4. Put tip to wire in solder cup.
5. After 1 second bring in solder.
6. Heat for 5 seconds longer. Do not heat contact more than 6 seconds in total.
7. Remove soldering iron.
8. Wait until solder gets rigid again.
9. Do not solder adjacent contacts consecutively, alternate position within the connector to minimize heat build up.

RECOMMENDED PANEL CUT-OUT



THIS DRAWING MAY NOT BE COPIED OR REPRODUCED IN ANY WAY, AND MAY NOT BE PASSED ON TO A THIRD PARTY WITHOUT WRITTEN PERMISSION. OWNERSHIP AND COPYRIGHT OF CONEC GmbH DO NOT ALTER CAD DRAWING BY HAND				tolerance		scale: 3:1
				dim. in mm		material: SEE SHEET 1
				date	name	title:
				drawn 21.08.12	Henneboel	RECOMMENDED PANEL CUT-OUT
				appd. 21.08.12	Fischer	D-SUB COMB. MALE 3W3P SOLDER CUP with threaded insert and hexlocking screw
			norm		dwg no:	DIN-A3
			d-old		15K1A1125	sh: 2/2
	a	Original			part no: SEE SHEET 1	
	rev.	description	date	name	CONEC [®]	