

Technical specification/

Technische Daten:

Working voltage/ Betriebsspannung:	100 VDC
Current rating/ Strombelastbarkeit:	30 A high power press-fit contact/ Hochstromkontakt Press-Fit
Insulation resistance/ Isolationswiderstand:	≥ 1 GΩ
Dielectric withstanding voltage/ Spannungsfestigkeit (DWV):	707 VDC
Temperature working range/ Umgebungstemperatur:	- 55 °C ... + 125 °C
Mating cycles/ Steckzyklen:	Quality class 3 = 50 Gütestufe 3
Capacitance value/ Kapazitätswert:	47 nF ± 20%

Materials/

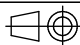

Werkstoffe:

Contact/ Kontakt:	Cu alloy, Au over Ni plating, mating side/Steckseite: Au over Ni/Gold über Nickel plating, press-fit area/Press-Fit Bereich: Tin plated/verzinkt
Insulator/ Isolierkörper:	PBT UL94 V-0, black/schwarz
Shell/ Gehäuse:	Steel, Sn over Ni
Threaded rear spacer/ Gewinde-Anstandsbolzen:	Cu alloy, Sn over Ni
Sleeve/ Hülse:	Cu alloy, Sn over Ni

Installation specification/

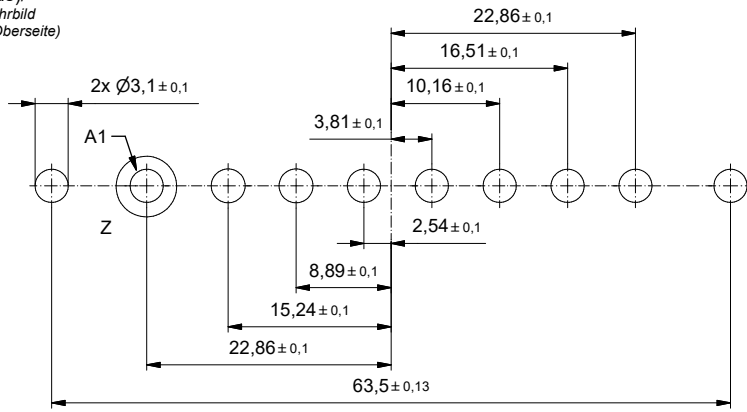
Montagedaten:

Recommended torque value for thread/ Empfohlenes Drehmoment für Gewinde:	max. 6 in.LB/ max. 67 Ncm
PCB thickness/ Leiterplattenstärke:	min. 2 mm
PCB hole drillings/ Leiterplattenbohrbild:	see sheet 2/ siehe Seite 2

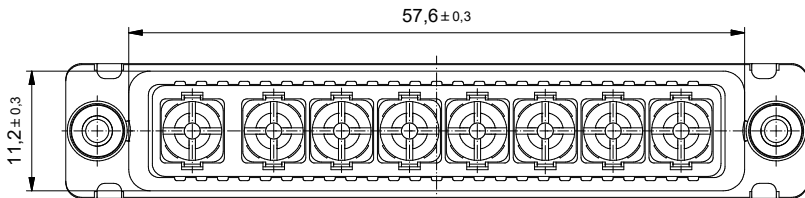
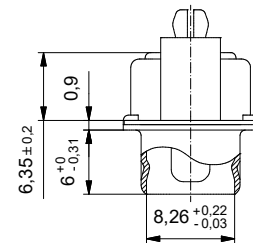
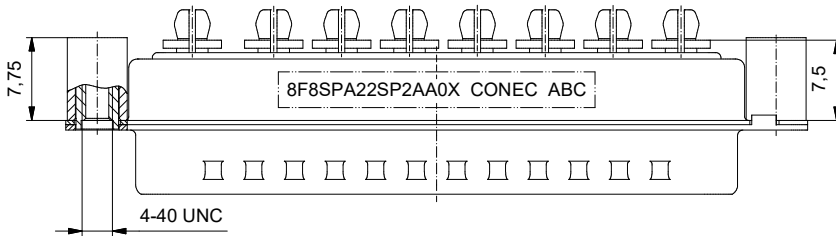
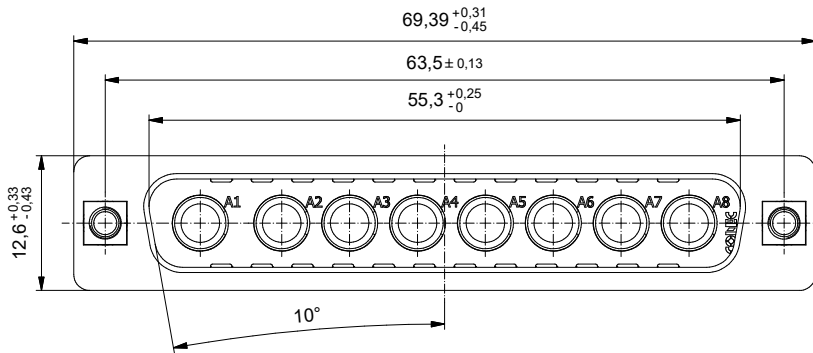
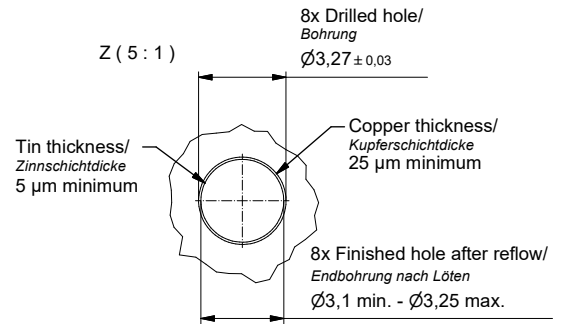
Part no. / Part marked/ Art.-Nr. / Bedruckung:	8F8SPA22SP2AA0X	Contact plating/ Kontakt Veredelung:	High power press-fit contact 30 A/ Hochstromkontakt Press-Fit 30 A:	plating, mating side/ Veredelung, Steckseite: plating, press-fit area/ Veredelung, Press-Fit Bereich:	gold over nickel/ Gold über Nickel tin plated/ verzinkt
Index: a Original		scale/ Maßstab: 2:1	 dim. in mm D-SUB Filter Combination Male 8F8SP Press-fit type with threaded rear spacer D-SUB Filter Combination Male 8F8SP Press-Fit Type mit Gewinde-Abstandsbolzen		dwg no / Z.-nr.: 24K1A2036
RoHS compliant/ konform				DIN-A3 1 / 2	

This reproduction, distribution and utilization of this document as well as the communication of its contents to others without express authorization is prohibited. Offenders will be held liable for the payment of damages. For further information on our legal notices, please refer to our website: www.conec.com.

PCB hole drillings
(PCB top side)/
Leiterplattenbohrbild
(Leiterplatten Oberseite)



Z (5 : 1)



This reproduction, distribution and utilization of this document as well as the communication of its contents to others without express authorization is prohibited. Offenders will be held liable for the payment of damages. For further information on our copyright and liability policies, please refer to our website: www.conec.com. The reproduction, distribution and utilization of this document as well as the communication of its contents to others without express authorization is prohibited. Offenders will be held liable for the payment of damages. For further information on our copyright and liability policies, please refer to our website: www.conec.com.

		dim. in mm		D-SUB Filter Combination Male 8F8SP Press-fit type with threaded rear spacer <i>D-SUB Filter Combination Male 8F8SP Press-Fit Type mit Gewinde-Abstandsbolzen</i>	
		Date/Datum	Name		
		drawn/ gez.	03.08.2021	Lehmenkühler	
		appd./ gepr.	04.08.2021	Köller	
Index: a Original	scale/ Maßstab: 2:1	CONEC		dwg no / Z.-nr.:	24K1A2036
RoHS compliant/ konform					DIN-A3 2 / 2