

**Technical specification/  
Technische Daten:**

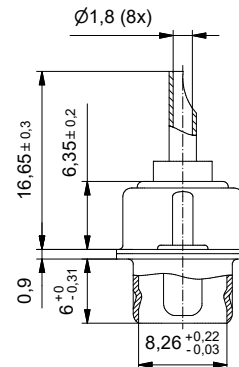
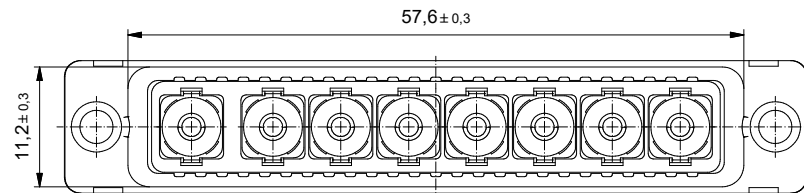
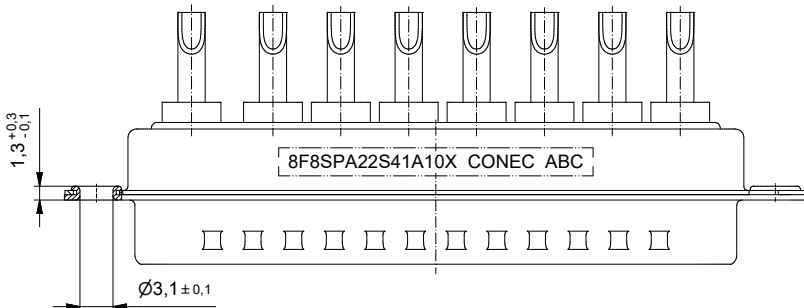
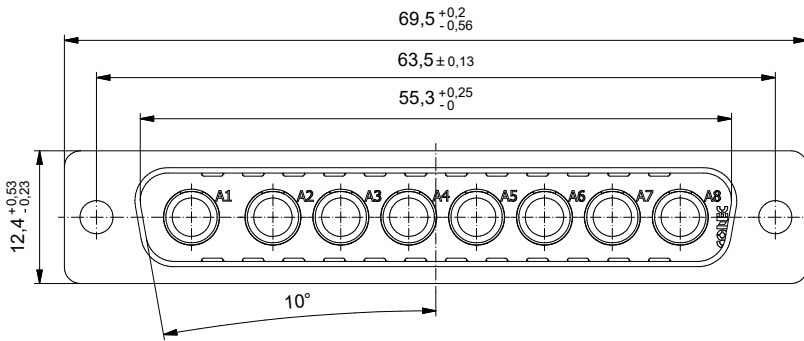
Working voltage/ Betriebsspannung:	100 VDC
Current rating/ Strombelastbarkeit:	10 A High power contact AWG 16-20/ Hochstromkontakt AWG 16-20
Insulation resistance/ Isolationswiderstand:	≥ 1 GΩ
Dielectric withstanding voltage/ Spannungsfestigkeit (DWN):	707 VDC
Temperature working range/ Umgebungstemperatur:	- 55 °C ... + 125 °C
Capacitance value/ Kapazitätswert:	47 nF ± 20 %
Mating cycles/ Steckzyklen:	Quality class 3 = 50 Gütestufe 3

**Materials/  
Werkstoffe:**

Contact/ Kontakt:	Cu alloy, Au over Ni
Insulator/ Isolierkörper:	PBT GF UL 94 V-0, black/schwarz
Shell/ Gehäuse:	Steel, Sn over Ni

**Solder instruction/  
Lötanweisung:**

- The wires have to be pretinned/  
1. Litzen werden vorverzinnt
- Solder temperature max. 350 °C/  
2. Löttemperatur max. 350 °C
- Solder time max. 15 s/  
3. Lötzeit max. 15 s



Part no. / Part marked/ Art.-Nr. / Bedruckung:	8F8SPA22S41A10X	Contact plating/ Kontakt Veredelung:	High power contact 10 A/ Hochstromkontakt 10 A:	plating, mating area: Veredelung, Steckbereich:	gold flash over nickel Gold über Nickel
				plating, termination side: Veredelung, Anschluss Seite:	gold flash over nickel Gold über Nickel
Index:	a Original	Scale/ Maßstab:	2:1	D-SUB Filter Combination Male 8W8SP Solder cup D-SUB Filter Combination Stiftleiste 8W8SP Lötkelch	
Status:	InBearbeitung	dwg no. / Z.-nr.:	24K1A1843	DIN-A3	
RoHS compliant/ konform		CONEC®		1 / 1	

This reproduction, distribution and utilization of this document as well as the communication of its contents to others without express authorization is prohibited. Offenders will be held liable for the payment of damages. For further information on our legal notices, please refer to our website: www.conec.com.