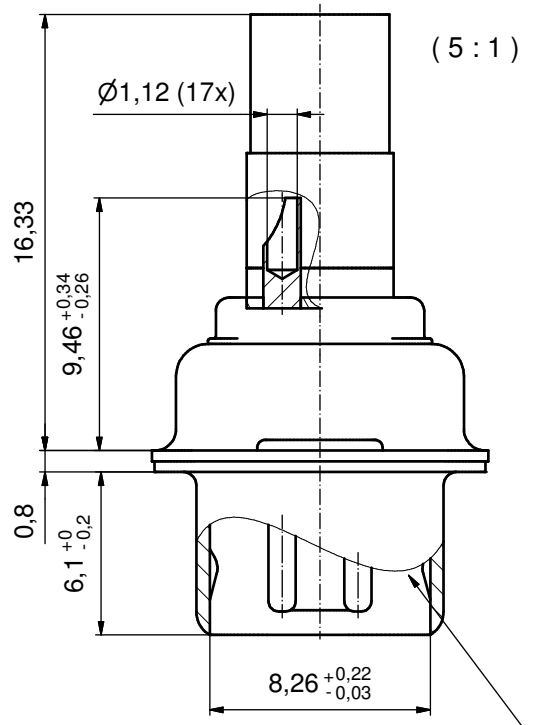
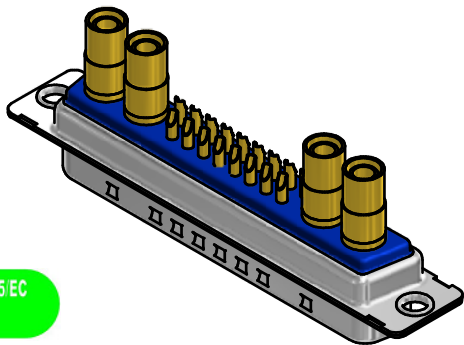
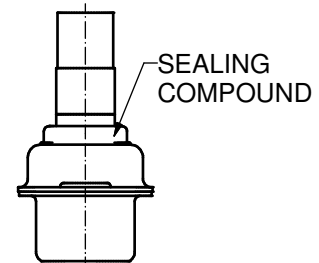
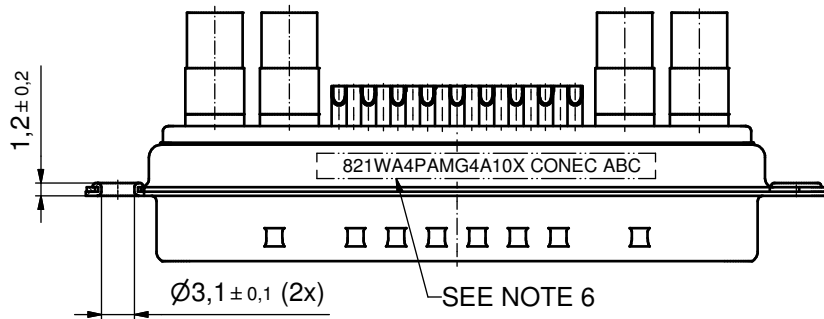
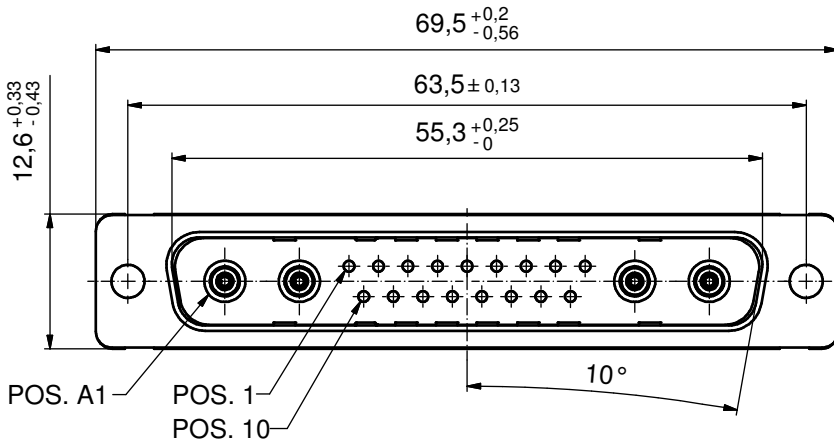


Solder Instruction

1. Cable should be prepared for soldering.
The cable/wires must be pretinned.
2. Insert cable/wire into solder cup.
3. Operate the soldering iron at 350°C,
50 Watt max. and use a pencil tip.
4. Put tip to wire in solder cup.
5. After 1 second bring in solder.
6. Heat for 3 seconds longer.
Do not heat contact more than 4 seconds in total.
7. Remove soldering iron.
8. Wait until solder gets rigid again.
9. Do not solder adjacent contacts consecutively,
alternate position within the connector to minimize heat build up.



RUBBER GASKET
PLACED ON TOP SURFACE
OF MALE INSULATOR



NOTES:

1. METALSHELLS: STAINLESS STEEL
2. INSULATORS: PBT GF UL 94 V-0, GREEN
3. SIGNAL CONTACTS: COPPER ALLOY
PLATING: GOLD FLASH over NICKEL
SOLDER CUP ACCEPTS CABLE AWG 20
4. COAXIAL CONTACTS 50 OHM:
PLATING INNER CONDUCTOR: GOLD FLASH over NICKEL
PLATING OUTER CONDUCTOR: GOLD FLASH over NICKEL
5. RUBBER GASKET: TPE; BLACK
6. CONNECTOR IS PART MARKED: 821WA4PAMG4A10X CONEC ABC

Directive 2002/95/EC
"RoHS"
Compliant

APPROVAL # FREIGABE # DEBLOCAGE # AUTORIZACION # APPROVAL	
CUSTOMER APPROVAL DATE:	
NAME:	TITLE:
COMPANY NAME:	
APPROVAL # FREIGABE # DEBLOCAGE # AUTORIZACION # APPROVAL	

THIS DRAWING MAY NOT BE COPIED OR REPRODUCED IN ANY WAY, AND MAY NOT BE PASSED ON TO A THIRD PARTY WITHOUT WRITTEN PERMISSION. OWNERSHIP AND COPYRIGHT OF CONEC GmbH			
DO NOT ALTER CAD DRAWING BY HAND			
rev.	description	date	name
a	Origin		

tolerance	dim. in mm
date	name
drawn	27.10.10 Henneboel
appd.	27.10.10 Fischer
norm	
d-old	
CONEC ®	

scale:	2:1 (5:1)
material:	see notes
title:	
D-SUB COMBINATION MALE	
21WA4P	
for installation into water resistant hood	
dwg no:	Inventor 10
	15K1A740
part no:	821WA4PAMG4A10X
	DIN-A3
	sh: 1