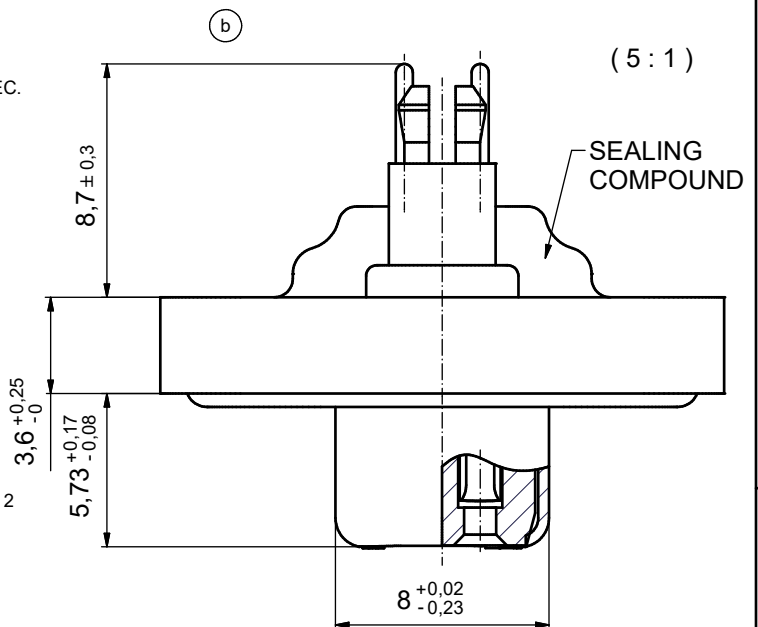
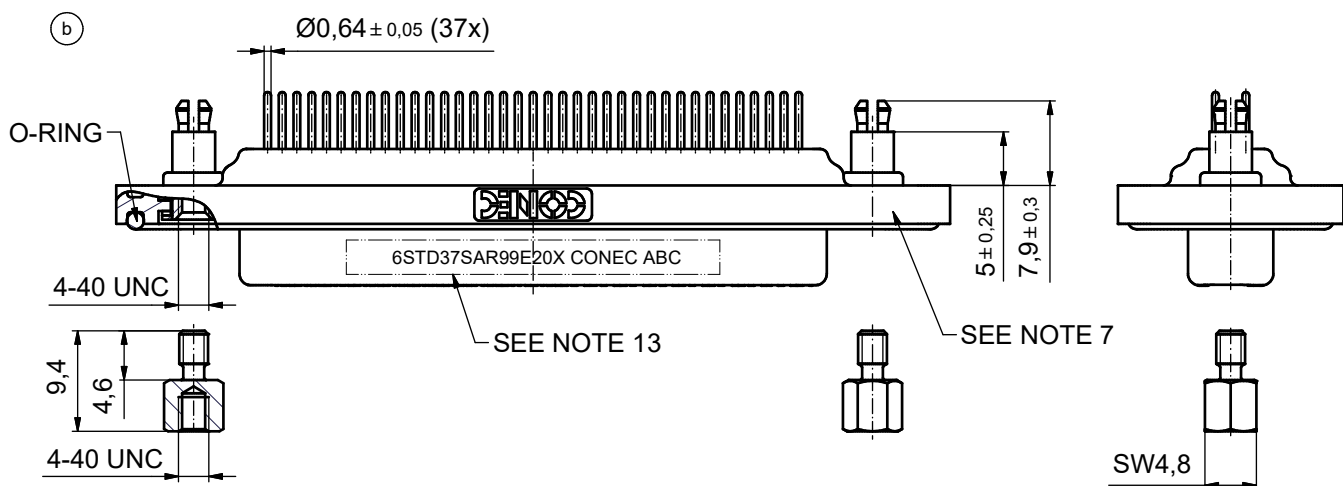
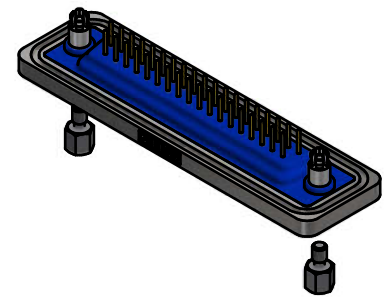
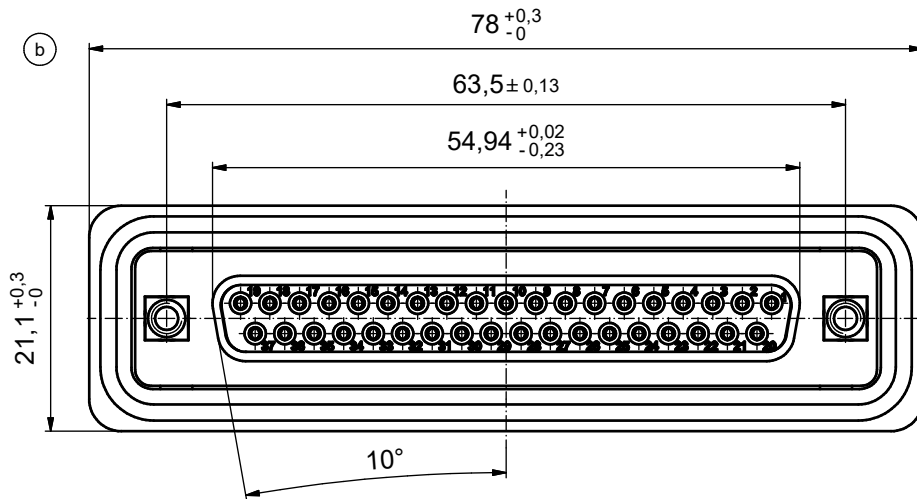


NOTES: (b)

1. FOR WAVESOLDERING (SOLDER BATH TEMPERATURE 240°C FOR 5 SEC. AND SOLDER PREHEAT 120°C FOR 120 SEC.)
2. METALSHELLS: COPPER ALLOY; min. 315µin TIN over 40-80µin NICKEL
3. INSULATORS: PBT GF UL 94 V-0; BLACK
4. CONTACTS: COPPER ALLOY
PLATING: GOLD FLASH over NICKEL
5. THREADED SPACER CLIPS: COPPER ALLOY;
min. 200µin TIN over 80µin NICKEL
PCB-HOLE: $\varnothing 3,1 \pm 0,1$; PCB THICKNESS 1,6mm
6. COLLARS: COPPER ALLOY; min. 200µin TIN over 80µin NICKEL
7. FRAME: ZINC DIE CAST; NICKEL PLATED
8. O-RING: SILICON; BLUE
9. SEALING COMPOUND: PUR; BLUE
10. HEXLOCKING SCREWS: STAINLESS STEEL
11. P.C.B. HOLE DRILLINGS + RECOMMENDED PANEL CUT-OUT ON SHEET 2
12. RECOMMENDED TORQUE FOR MOUNTING SCREW 35Ncm (3.1 in.LB) /
max. 40Ncm (3.5 in.LB)
13. CONNECTOR IS PART MARKED: 6STD37SAR99E20X CONEC ABC



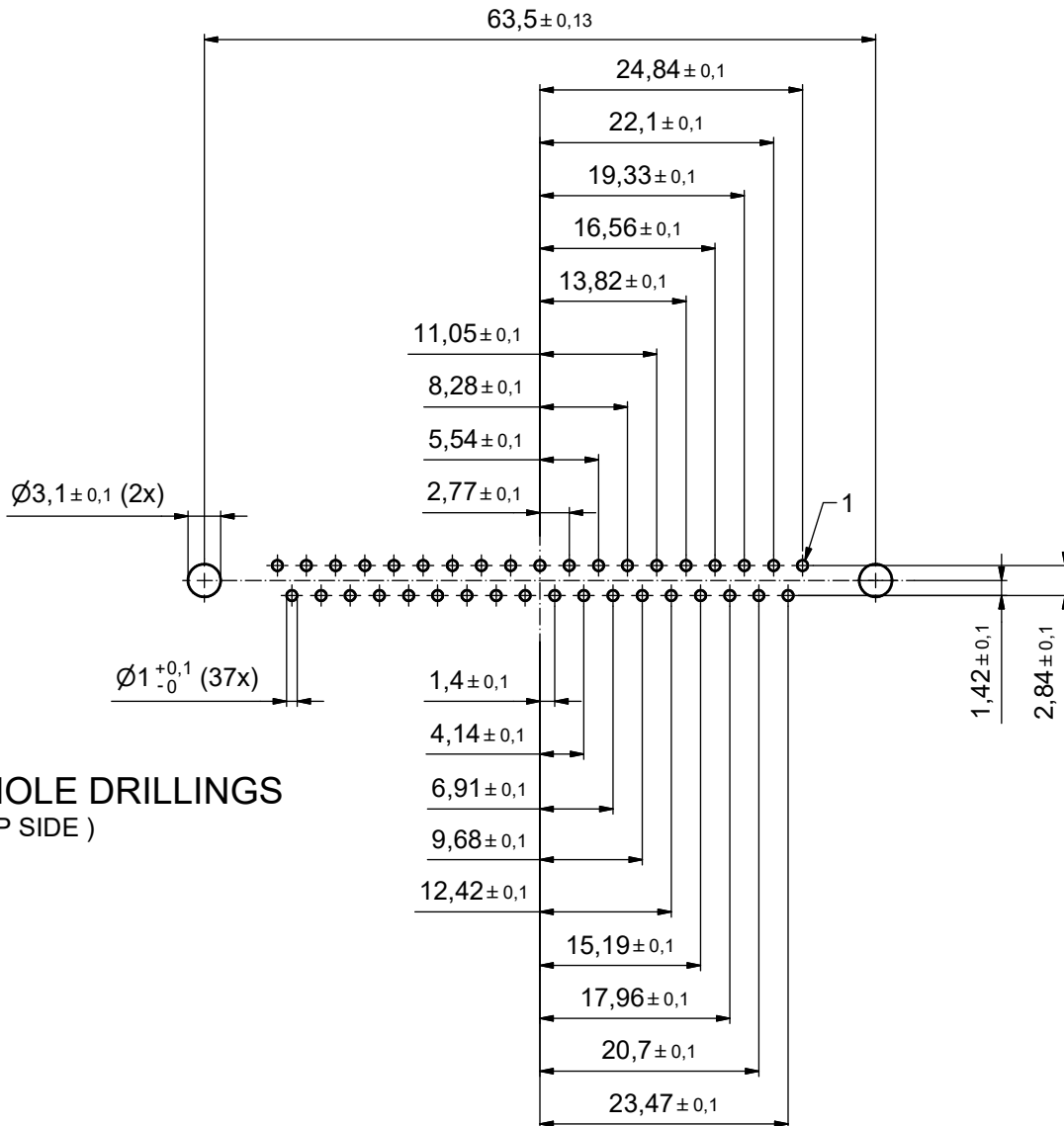
AT ALL TIMES WATER RESISTANT CONNECTORS NOT IN USE SHOULD BE COVERED WITH A CONEC WATER RESISTANT CAP OR WATER TIGHT HOOD.



Directive 2002/95/EC RoHS compliant

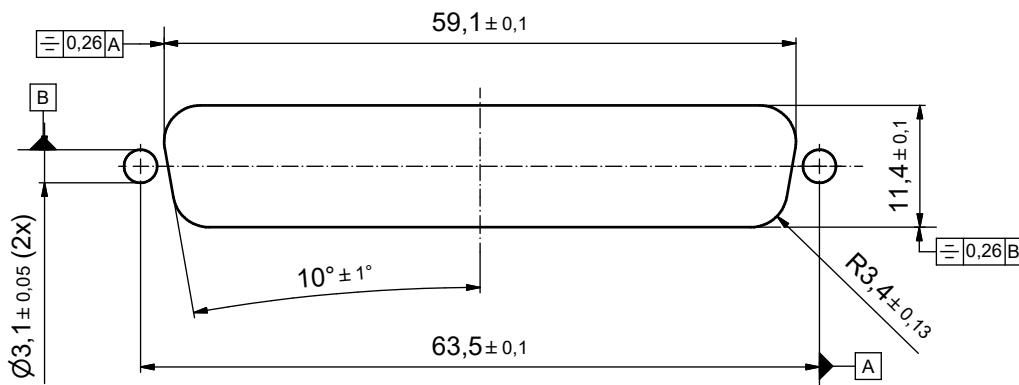
THIS DRAWING MAY NOT BE COPIED OR REPRODUCED IN ANY WAY, AND MAY NOT BE PASSED ON TO A THIRD PARTY WITHOUT WRITTEN PERMISSION. OWNERSHIP AND COPYRIGHT OF CONEC GmbH DO NOT ALTER CAD DRAWING BY HAND				tolerance		dim. in mm	scale: 2:1 (5:1)
							material: SEE NOTES
				drawn	29.01.04	Lehmenkühler	title: D-SUB FEMALE 37pos. SOLDER PIN STRAIGHT with threaded spacer clip and hexlocking screw
				appd.	29.01.04	Mickenbecker	
norm							
d-old							
5 x b	A4141	26.10.2011	K.H.	dwg no:		DIN-A3	
a	Original				18K2A244	(b) sh: 7/8	
rev.	description	date	name	part no: 6STD37SAR99E20X			





P.C.B. HOLE DRILLINGS
(P.C.B. TOP SIDE)

RECOMMENDED PANEL CUT-OUT (b)



Directive 2002/95/EC RoHS compliant

THIS DRAWING MAY NOT BE COPIED OR REPRODUCED IN ANY WAY, AND MAY NOT BE PASSED ON TO A THIRD PARTY WITHOUT WRITTEN PERMISSION. OWNERSHIP AND COPYRIGHT OF CONEC GmbH. DO NOT ALTER CAD DRAWING BY HAND

				tolerance		dim. in mm	
				date	name		
				drawn	29.01.04	Lehmenkühler	
				appd.	29.01.04	Mickenbecker	
				norm			
				d-old			
1 x b	A4141	26.10.201	K.H.	CONEC [®]			
a	Original						
rev.	description	date	name				

scale: 2:1	
material: SEE SHEET 7	
title: P.C.B. HOLE DRILLINGS RECOMMENDED PANEL CUT-OUT D-SUB FEMALE 37pos. SOLDER PIN STRAIGHT	
dwg no: 18K2A244	DIN-A3
part no: SEE SHEET 7	sh: 8/8