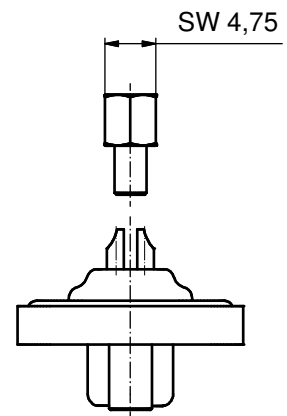
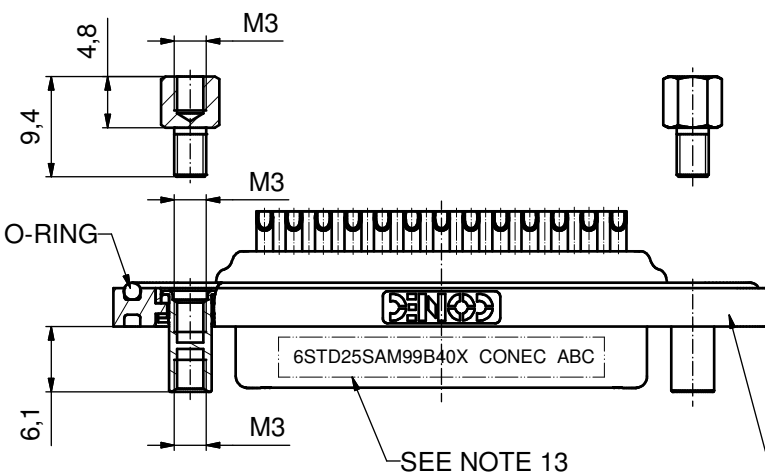
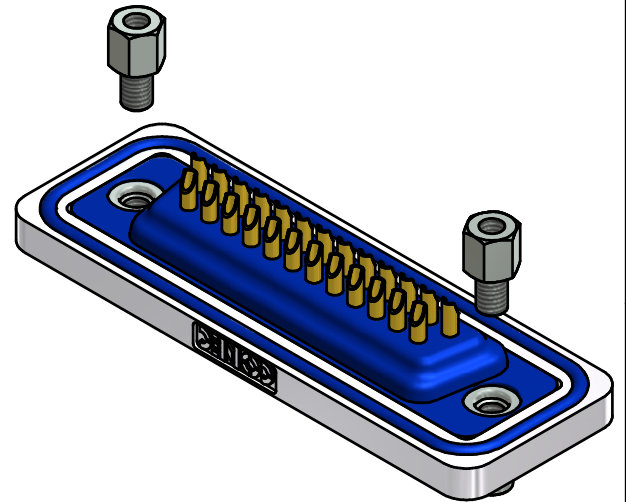
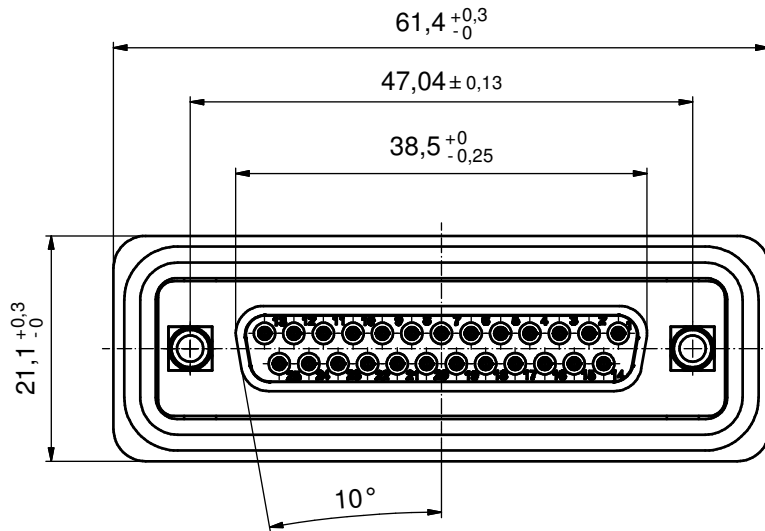
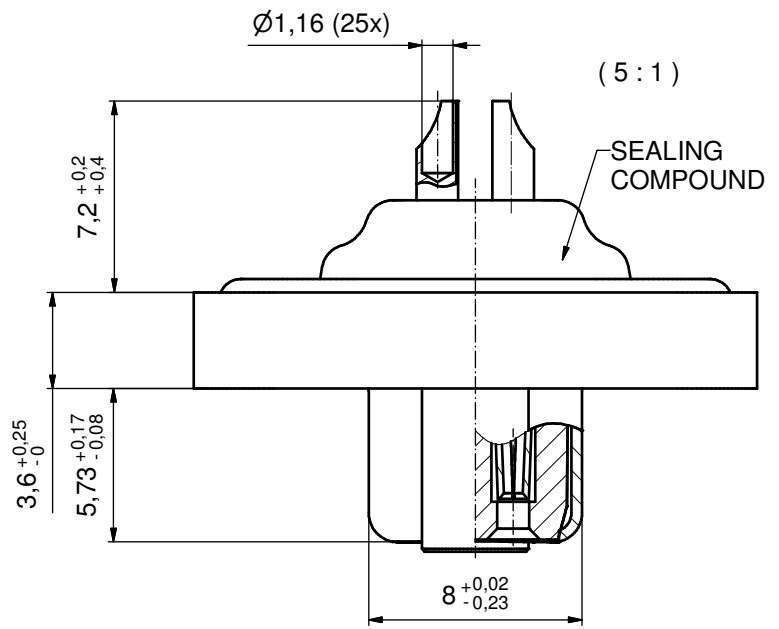


NOTES:

1. RECOMMENDED SOLDER INSTRUCTION SEE SHEET 2
2. METALSHELLS: COPPER ALLOY; min. 320µm TIN over 40-80µm NICKEL
3. INSULATORS: PBT GF UL 94 V-0, BLACK
4. CONTACTS: COPPER ALLOY
PLATING: FLASH GOLD over NICKEL
SOLDER CUP ACCEPTS CABLE AWG 20
5. THREADED LOCKS: COPPER ALLOY; min 200µm TIN over 80µm NICKEL
6. COLLARS: COPPER ALLOY; min 200µm TIN over 80µm NICKEL
7. HEXLOCKING SCREW: STAINLESS STEEL
8. FRAME: ZINC DIE CAST; NICKEL PLATED
9. O-RING: SILICON; BLUE
10. SEALING COMPOUND: PUR; BLUE
11. RECOMMENDED PANEL CUT-OUT ON SHEET 2
12. RECOMMENDED TORQUE FOR MOUNTING SCREW 35Ncm (3.1 in.LB)/ max.40Ncm (3.5 in.LB)
13. CONNECTOR IS PART MARKED: 6STD25SAM99B40X CONEC ABC

AT ALL TIMES WATER RESISTANT CONNECTORS NOT IN USE SHOULD BE COVERED WITH A CONEC WATER RESISTANT CAP OR WATER TIGHT HOOD.



Directive 2002/95/EC RoHS compliant

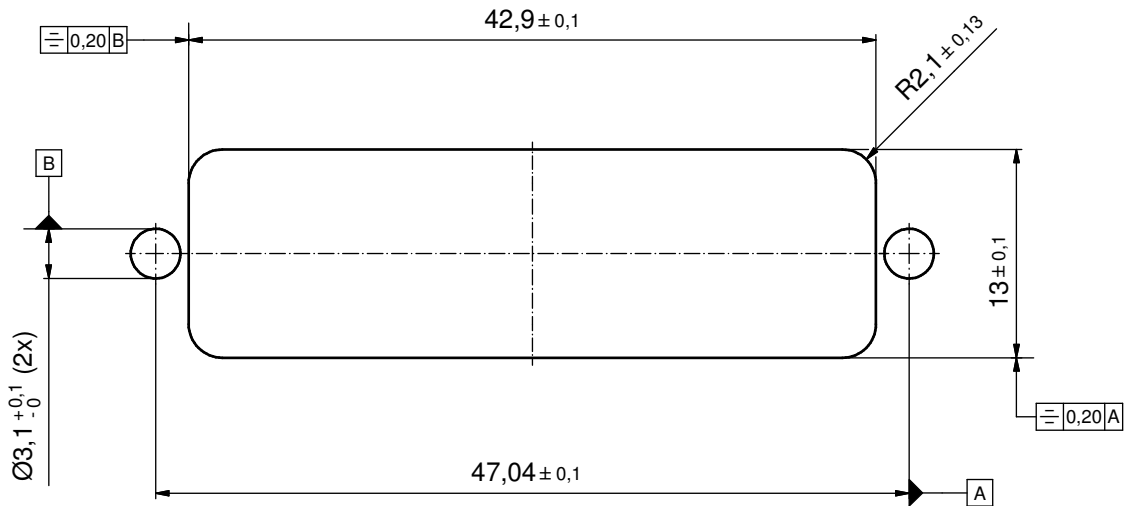
THIS DRAWING MAY NOT BE COPIED OR REPRODUCED IN ANY WAY, AND MAY NOT BE PASSED ON TO A THIRD PARTY WITHOUT WRITTEN PERMISSION. OWNERSHIP AND COPYRIGHT OF CONEC GmbH DO NOT ALTER CAD DRAWING BY HAND	tolerance			dim. in mm	scale: 2:1 (5:1)
					material: SEE NOTES
	drawn	30.05.11	Henneboel	title: D-SUB FEMALE 25pos. SOLDER CUP with threaded lock and hexlocking screw	
	appd.	01.06.11	Fischer		
	norm				
d-old			dwg no:	DIN-A3	
a	Original			15K2A364	
rev.	description	date	name	part no:	6STD25SAM99B40X



Solder Instruction

1. Cable should be prepared for soldering. The cable/wires must be pretinned.
2. Insert cable/wire into solder cup.
3. Operate the soldering iron at 350°C, 50 Watt max. and use a pencil tip.
4. Put tip to wire in solder cup.
5. After 1 second bring in solder.
6. Heat for 3 seconds longer. Do not heat contact more than 4 seconds in total.
7. Remove soldering iron.
8. Wait until solder gets rigid again.
9. Do not solder adjacent contacts consecutively,
alternate position within the connector to minimize heat build up.

RECOMMENDED PANEL CUT-OUT



THIS DRAWING MAY NOT BE COPIED OR REPRODUCED IN ANY WAY, AND MAY NOT BE PASSED ON TO A THIRD PARTY WITHOUT WRITTEN PERMISSION. OWNERSHIP AND COPYRIGHT OF CONEC GmbH DO NOT ALTER CAD DRAWING BY HAND				tolerance		scale: 3:1
				date	name	material: SEE SHEET 1
				drawn	30.05.11	Henneboel
				appd.	01.06.11	Fischer
				norm		
				d-old		
				rev.		
a	Original		CONEC [®]			title: PANEL CUT-OUT D-SUB COM. FEMALE 17W2S SOLDER CUP with threaded lock and hexlocking screw
rev.	description	date				name
						part no: SEE SHEET 1