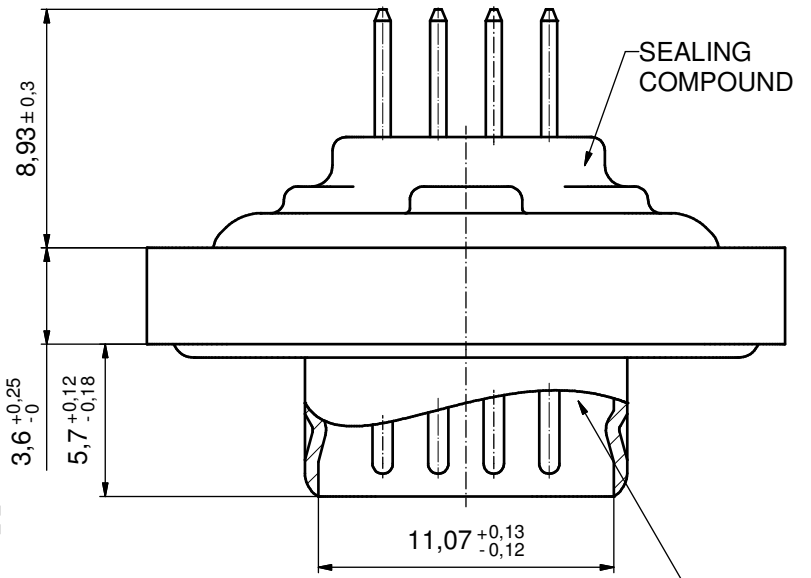


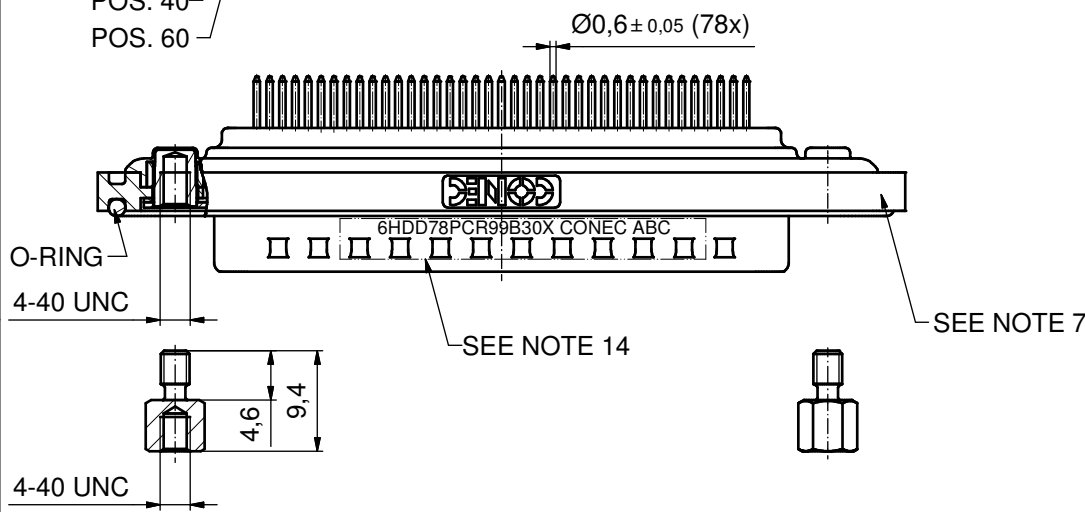
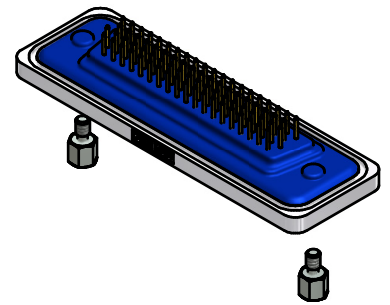
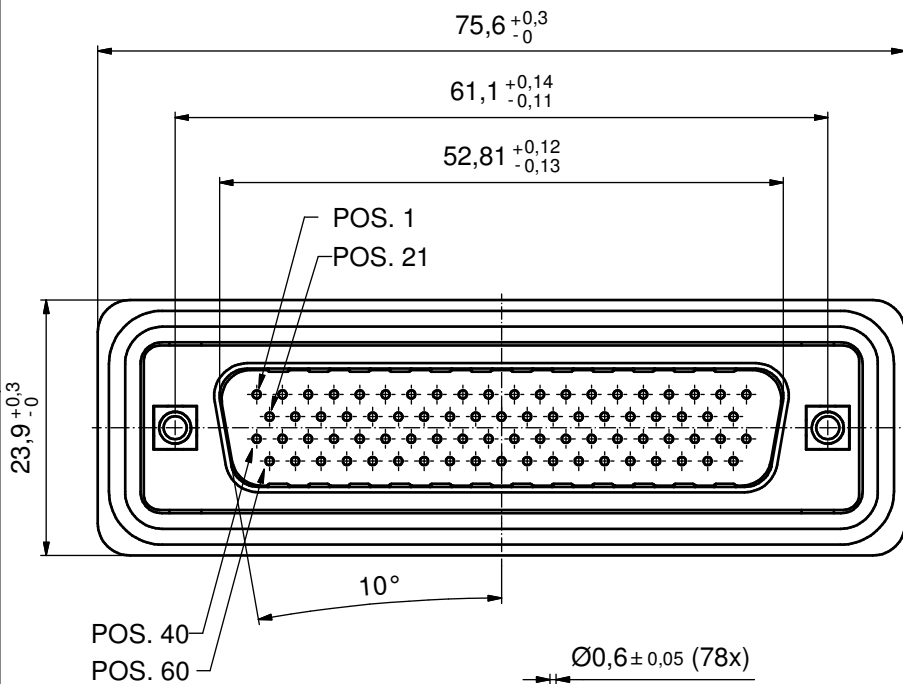
NOTES:

- FOR WAVESOLDERING (SOLDER BATH TEMPERATURE 240°C FOR 5sec./ AND SOLDER PREHEAT 120°C FOR 120 SEC.)
- METALSHELLS: COPPER ALLOY;
min. 315µin TIN over 40-80µin NICKEL
- INSULATORS: PBT GF UL 94 V-0, BLACK
- CONTACTS: COPPER ALLOY
PLATING: 30µin HARD GOLD over min. 50µin NICKEL
- THREADED INSERTS: COPPER ALLOY;
min. 200µin TIN over 80µin NICKEL
- COLLARS: COPPER ALLOY; min. 200µin TIN over 80µin NICKEL
- FRAME: ZINC DIE CAST; NICKEL PLATED
- HEXLOCKING SCREWS: STAINLESS STEEL
- RUBBER GASKET: TPE
- O-RING: SILICON; BLUE
- SEALING COMPOUND: PUR; BLUE
- P.C.B. HOLE DRILLINGS + RECOMMENDED PANEL CUT OUT
SEE SHEET 2
- RECOMMENDED TORQUE FOR MOUNTING SCREW
35Ncm (3.1 in.LB) / max. 40Ncm (3.5 in.LB)
- CONNECTOR IS PART MARKED: **6HDD78PCR99B30X CONEC ABC**

(5:1)



RUBBER GASKET
PLACED ON TOP SURFACE
OF MALE INSULATOR



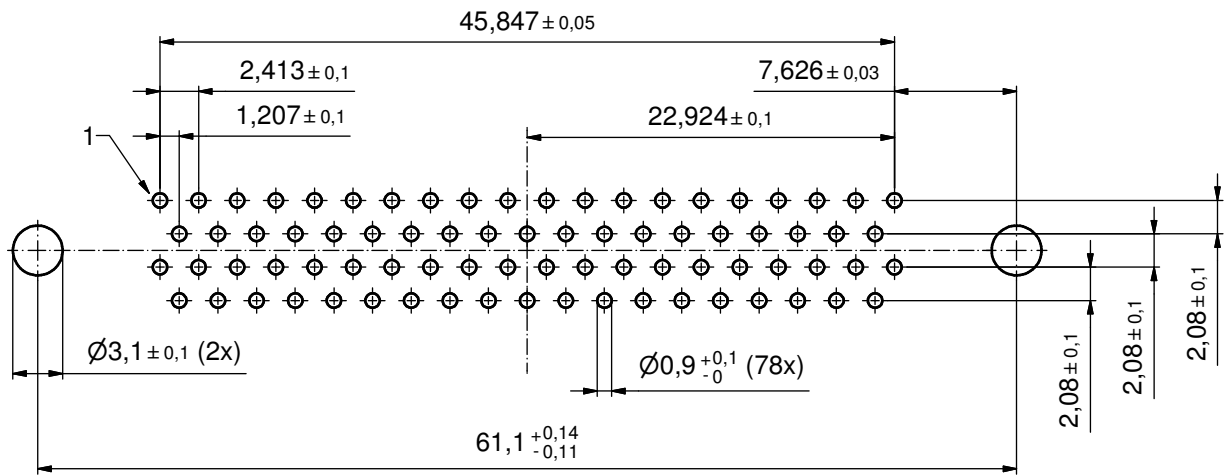
AT ALL TIMES WATER RESISTANT
CONNECTORS NOT IN USE
SHOULD BE COVERED WITH
A CONEC WATER RESISTANT
CAP OR WATER TIGHT HOOD.

Directive 2002/95/EC RoHS compliant

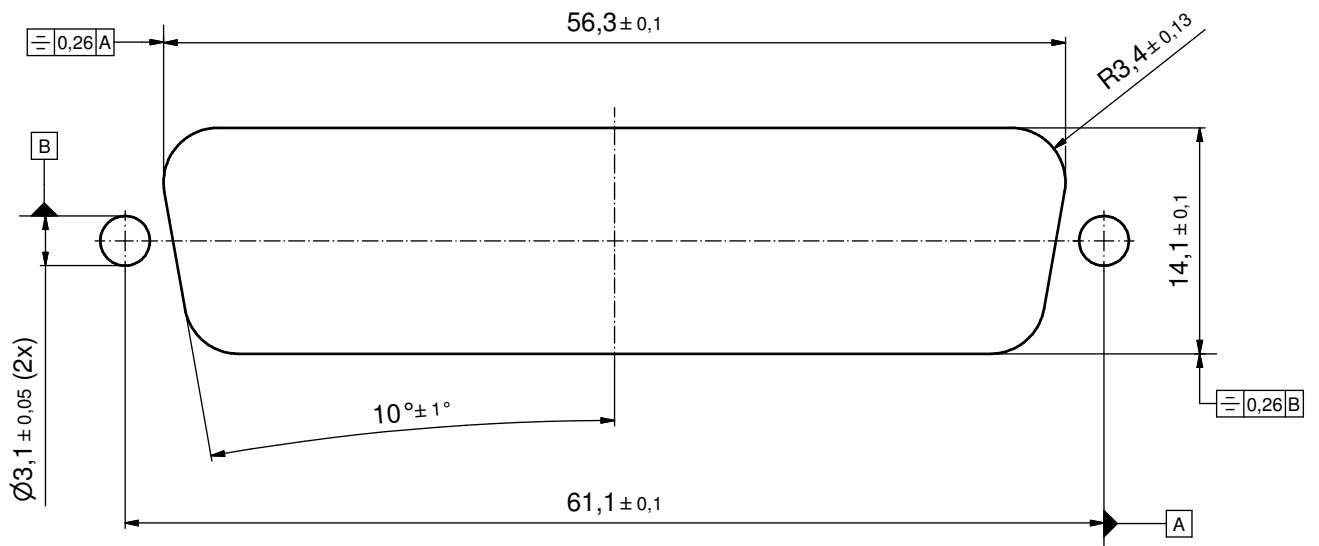
THIS DRAWING MAY NOT BE COPIED OR REPRODUCED IN ANY WAY, AND MAY NOT BE PASSED ON TO A THIRD PARTY WITHOUT WRITTEN PERMISSION. OWNERSHIP AND COPYRIGHT OF CONEC GmbH DO NOT ALTER CAD DRAWING BY HAND	tolerance		dim. in mm		scale:	2:1 (5:1)
					material:	SEE NOTES
	drawn	15.02.12	Henneboel		title: D-SUB HD MALE 78pos. SOLDER PIN STRAIGHT with threaded insert and hexlocking screw	
	appd.	15.02.12	Fischer			
	norm					
d-old						
rev.	a	Original			dwg no:	15K1A1004
description					part no:	6HDD78PCR99B30X
						DIN-A3
						sh: 1/2



P.C.B. HOLE DRILLINGS
(P.C.B. TOP SIDE)



RECOMMENDED PANEL CUT-OUT



THIS DRAWING MAY NOT BE COPIED OR REPRODUCED IN ANY WAY, AND MAY NOT BE PASSED ON TO A THIRD PARTY WITHOUT WRITTEN PERMISSION. OWNERSHIP AND COPYRIGHT OF CONEC GmbH DO NOT ALTER CAD DRAWING BY HAND				tolerance		dim. in mm	scale: 2:1		
				date	name		material: SEE SHEET 1		
				drawn	15.02.12	Henneboel	title: PANEL CUT-OUT D-SUB HD MALE 78pos. with threaded insert and hexlocking screw		
				appd.	15.02.12	Fischer			
				norm					
			d-old			dwg no:		DIN-A3	
	a	Original				15K1A1004		sh: 2/2	
rev.	description	date				name	part no:		SEE SHEET 1