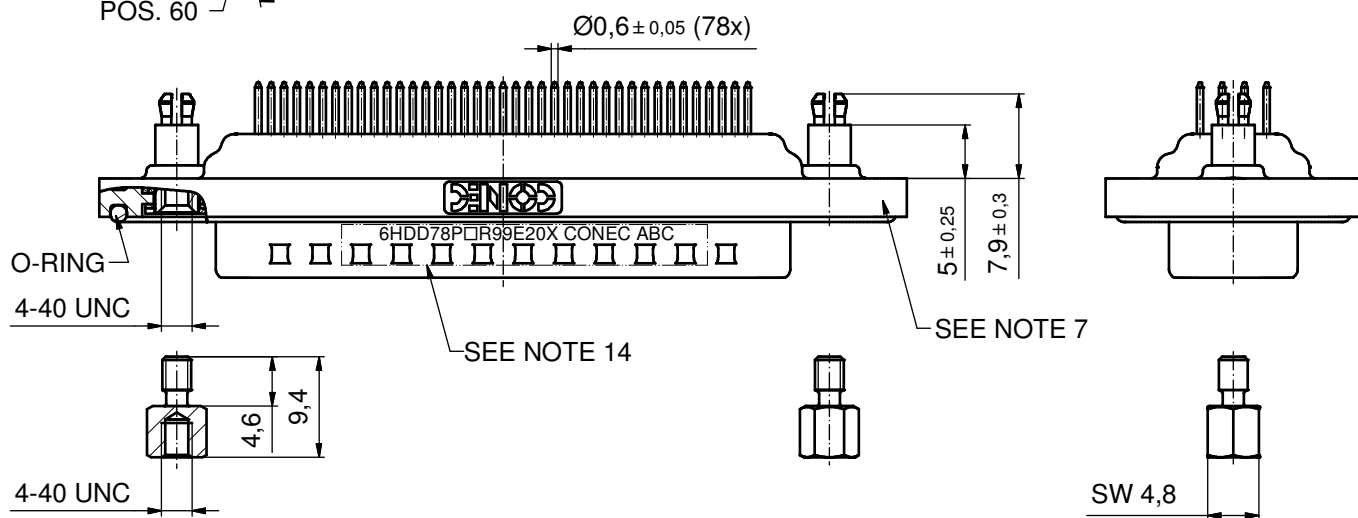
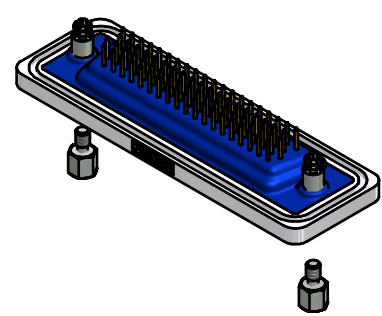
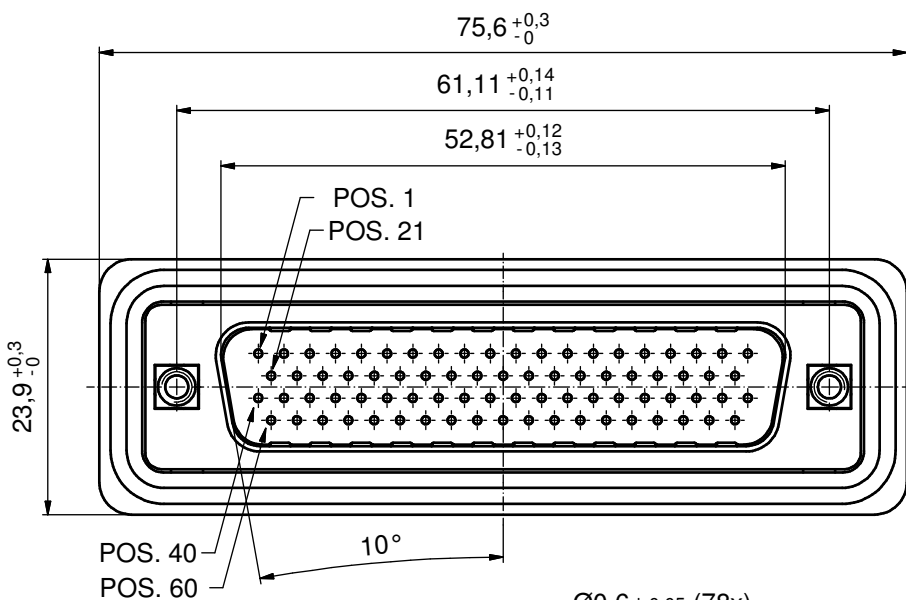
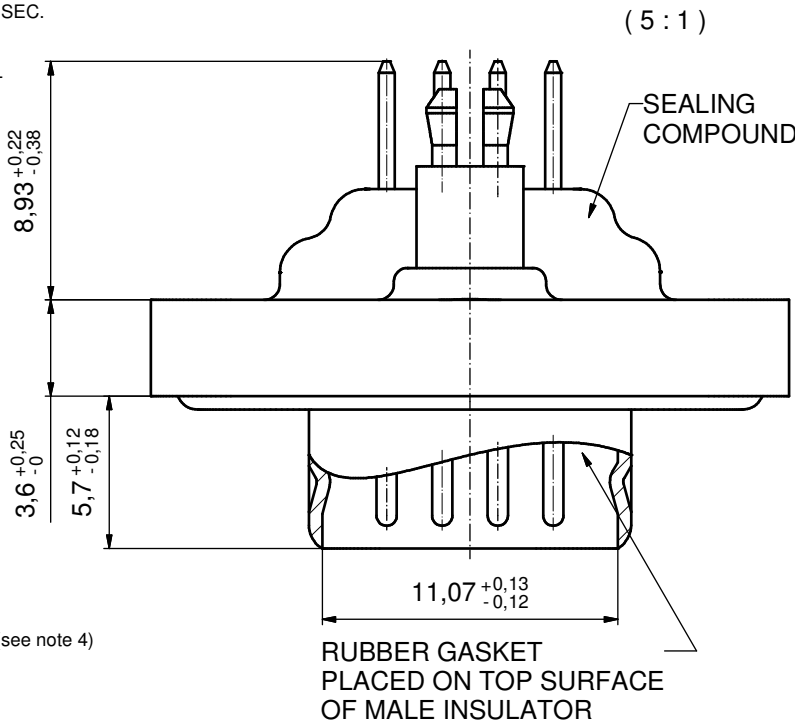


NOTES:

- FOR WAVESOLDERING (SOLDER BATH TEMPERATURE 240°C FOR 5 SEC. AND SOLDER PREHEAT 120°C FOR 120 SEC.)
- METALSHELLS: COPPER ALLOY; min. 315µin TIN over 40-80µin NICKEL
- INSULATORS: PBT GF UL 94 V-0; BLACK
- CONTACTS: COPPER ALLOY; PLATING (SEE PART NO):
 - PLEASE ADD A for GOLD FLASH over NICKEL (PREFERRED TYPE)
 - PLEASE ADD B for 20µin HARD GOLD over min. 50µin NICKEL
 - PLEASE ADD C for 30µin HARD GOLD over min. 50µin NICKEL
- THREADED SPACER CLIPS: COPPER ALLOY; min. 200µin TIN over 80µin NICKEL
PCB-HOLE: $\varnothing 3,1 \pm 0,1$; PCB THICKNESS 1,6mm
- COLLARS: COPPER ALLOY, min. 200µin TIN over 80µin NICKEL
- FRAME: ZINC DIE CAST; NICKEL PLATED
- O-RING: SILICON; BLUE
- RUBBER GASKET: TPE; BLACK
- SEALING COMPOUND: PUR; BLUE
- HEXLOCKING SCREWS: STAINLESS STEEL
- P.C.B. HOLE DRILLINGS +
RECOMMENDED PANEL CUT-OUT ON SHEET 2
- RECOMMENDED TORQUE FOR MOUNTING SCREW
35Ncm (3,1 in.LB) / max. 40Ncm (3,5 in.LB)
- CONNECTOR IS PART MARKED: **6HDD78P□R99E20X CONEC ABC** (see note 4)



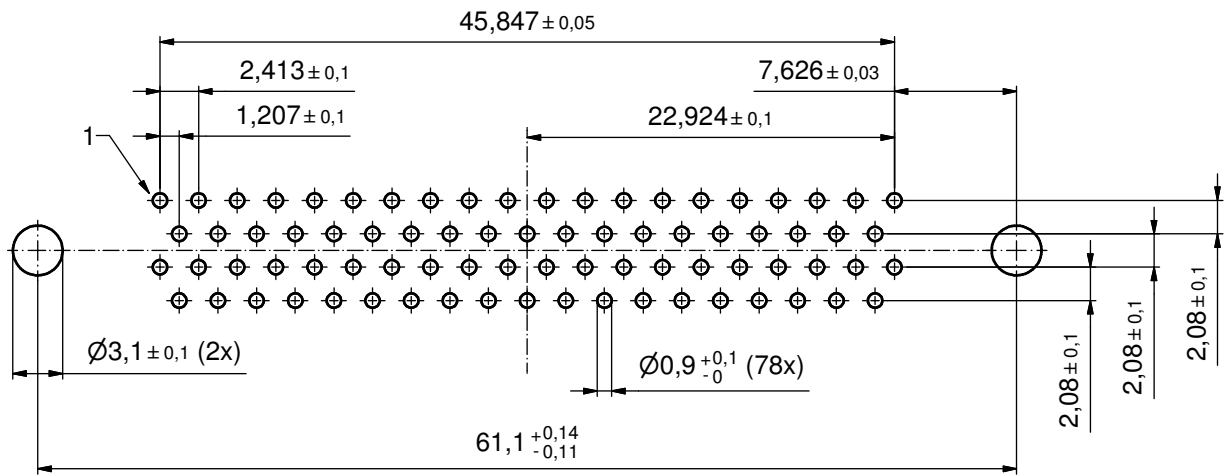
AT ALL TIMES WATER RESISTANT CONNECTORS NOT IN USE SHOULD BE COVERED WITH A CONEC WATER RESISTANT CAP OR WATER TIGHT HOOD.

Directive 2002/95/EC RoHS compliant

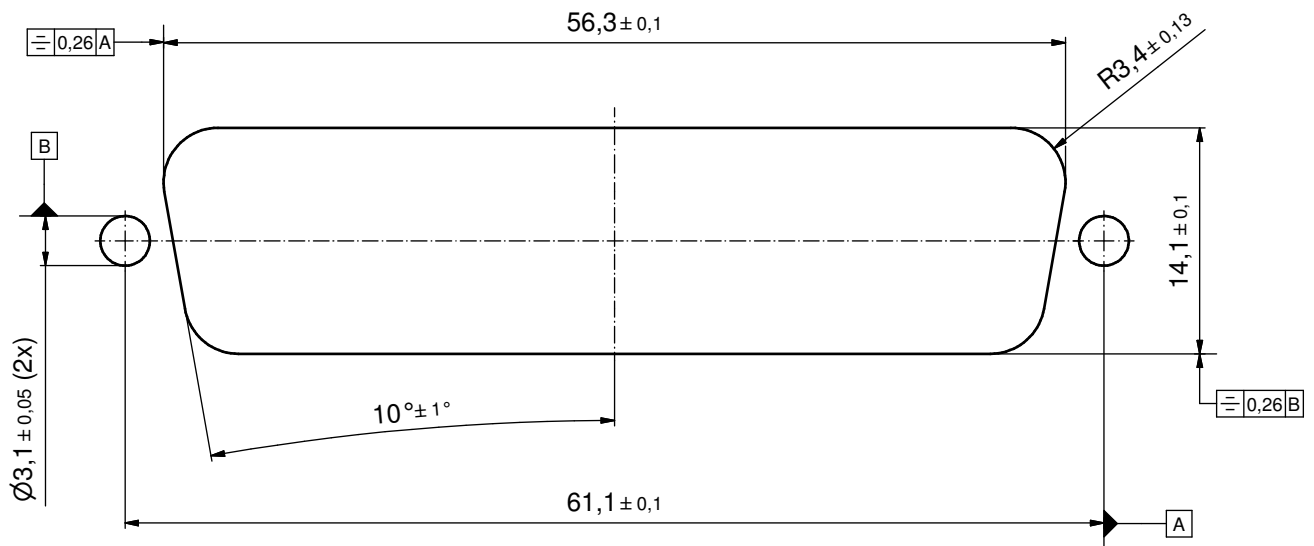
| | | | | | | |
|--|-------------|----------|--|----------------------------|-----------|--|
| THIS DRAWING MAY NOT BE COPIED OR REPRODUCED IN ANY WAY, AND MAY NOT BE PASSED ON TO A THIRD PARTY WITHOUT WRITTEN PERMISSION. OWNERSHIP AND COPYRIGHT OF CONEC GmbH DO NOT ALTER CAD DRAWING BY HAND | tolerance | | dim. in mm | scale: | 2:1 (5:1) | |
| | | | | material: | SEE NOTES | |
| | drawn | 09.08.12 | name | title: | | |
| | appd. | 09.08.12 | Fischer | D-SUB HD MALE | | |
| | norm | | | 78pos. SOLDER PIN STRAIGHT | | |
| d-old | | | with threaded spacer clip and hexlocking screw | | | |
| a | Original | | dwg no: | | DIN-A3 | |
| rev. | description | date | 15K1A1115 | | sh: 1/2 | |
| | | | part no: 6HDD78P□R99E20X (see note 4) | | | |



P.C.B. HOLE DRILLINGS
(P.C.B. TOP SIDE)



RECOMMENDED PANEL CUT-OUT



| | | | | | | |
|--|-------------|----------|----------------------|---------------------------|--|-----------------------|
| THIS DRAWING MAY NOT BE COPIED OR REPRODUCED IN ANY WAY, AND MAY NOT BE PASSED ON TO A THIRD PARTY WITHOUT WRITTEN PERMISSION. OWNERSHIP AND COPYRIGHT OF CONEC GmbH DO NOT ALTER CAD DRAWING BY HAND | | | | tolerance | | scale: 2:1 |
| | | | | dim. in mm | | material: SEE SHEET 1 |
| | drawn | 09.08.12 | Henneboel | title: | | |
| | appd. | 09.08.12 | Fischer | P.C.B. HOLE DRILLINGS | | |
| | norm | | | RECOMMENDED PANEL CUT-OUT | | |
| d-old | | | D-SUB HD MALE 78pos. | | | |
| a | Original | | dwg no: | | | DIN-A3 |
| rev. | description | date | name | 15K1A1115 | | |
| | | | | part no: SEE SHEET 1 | | |
| | | | | sh: 2/2 | | |