

**Technical specification:**

Rated voltage: IEC 61076-2-101	30 V
Current rating: IEC 61076-2-101	4 A at 40°C
Insulation resistance: IEC 60512	≥100 MΩ
Pollution degree: IEC 60664-1	3/2
Degree of protection: IEC 60529	IP 67, in mated condition
Temperature range:	-30°C ... +80°C
Mating cycles: IEC 60512-9a	≥100

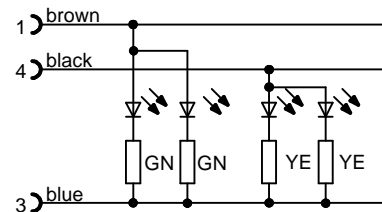
**Materials:**

Contact:	CuZn
Contact plating:	Nickel, gold plated
Contact carrier:	PA, UL 94
Sealing:	FPM
Coupling nut:	GD-Zn, nickel plated
Moulding body:	TPU, UL 94, translucent

**Installation specification:**

Recommended torque:	0,6 Nm
Conec installation tool:	Torque wrench: 36-000200 Insert across flats 13: 36-000220

**Contact assignment:**



Part no:	Description:	Length L:	Cable:
43-16746	SAL - 12 - RK3 - 2L - 2 / A1 / 025	2m	PVC, grey, 3x0,25mm <sup>2</sup> Cable: 781-A12300
43-16747	SAL - 12 - RK3 - 2L - 3 / A1 / 025	3m	
43-16748	SAL - 12 - RK3 - 2L - 5 / A1 / 025	5m	
43-16749	SAL - 12 - RK3 - 2L - 10 / A1 / 025	10m	
43-xxxxx	SAL - 12 - RK3 - 2L - ... / A1 / 025	x	

D see data sheet cable

DO NOT ALTER CAD DRAWING BY HAND Directive 2002/95/EC RoHS compliant	Index: a 12.08.2013 fro Ä4872 Cable changed	dim. in mm		title: <b>Female connector M12x1 axial with LED</b>
	tolerance of cable: L ≤ 4m: L + 40mm L > 4m: L + 1%	drawn 15.07.13 appd. 15.07.13	date 15.07.13 name Fromm Mankopf	
	general tolerance: 0 ± 0,50mm 0,0 ± 0,25mm 0,00 ± 0,10mm			part no: see table
	<small>THIS DRAWING MAY NOT BE COPIED OR REPRODUCED IN ANY WAY, AND MAY NOT BE PASSED ON TO A THIRD PARTY WITHOUT WRITTEN PERMISSION. OWNERSHIP AND COPYRIGHT OF CONEC GmbH</small>			