

Technical specification:

Rated voltage: 50 V AC / 60 V DC
IEC 61076-2-104

Current rating: 4 A at 40 °C
IEC 61076-2-104

Insulation resistance: >=100 MΩ
IEC 60512

Pollution degree: 3/2
IEC 60664-1

Degree of protection: IP 67, in mated condition
IEC 60529

Temperature range: -25 °C ... +95 °C
EN 60512-11-10
-40 °C ... +85 °C
EN 60512-11-4

Mating cycles: >=100
IEC 60512-9a

Materials:

Contact: CuZn, Ni b / Au 0,2 gal.

Contact carrier: LCP GF, UL 94 V-0

Sealing: FPM, NBR

Socket housing: CuZn, Ni

Suitable for reflow soldering
max. 60s / 250 °C

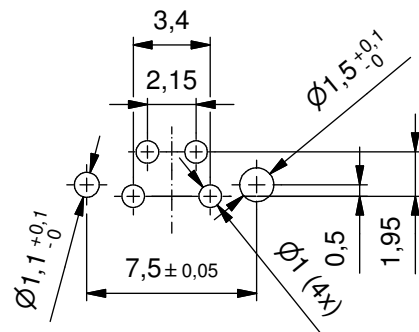
Installation specification:

Recommended torque: 1-1,2 Nm

Conec installation tool: Torque wrench: 36-000200
Insert across flats 13: 36-000220

Installation hole: See fig.1 42K1A1119

Layout proposal



Part no. packing unit Tape & Reel:	Part no. packing unit in bulk:	Description:	Pos
42-01318TR	42-01318	SAL- 8 - FS4 - X13 / THR	4

DO NOT ALTER CAD DRAWING BY HAND	RoHS & REACH compliant	Index a: 31.03.16 rbo Ä6018	dim. in mm	title: Male socket M8x1 THR, frontmounting, screwable / snap-in		
		Marking in mating face removed, details of contact carrier and sealing added				
			date		name	dwg no: 42K1A844
			drawn 23.02.15		Gitinow	
	appd. 23.02.15	Schramm	part no: see table			
general tolerance: 0 ± 0,50mm 0,0 ± 0,25mm 0,00 ± 0,10mm * ± 5°						
<small>THIS DRAWING MAY NOT BE COPIED OR REPRODUCED IN ANY WAY, AND MAY NOT BE PASSED ON TO A THIRD PARTY WITHOUT WRITTEN PERMISSION. OWNERSHIP AND COPYRIGHT OF CONEC GmbH</small>						