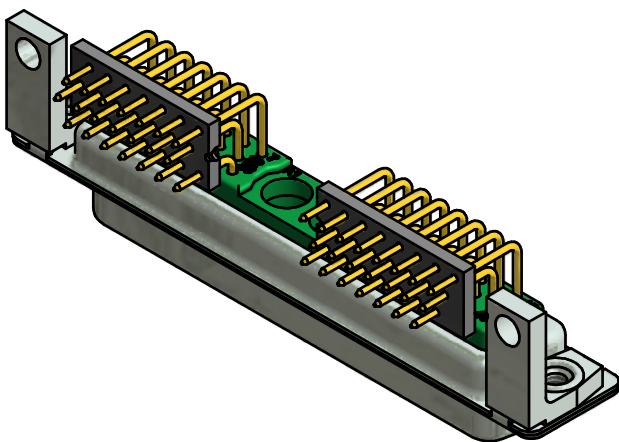
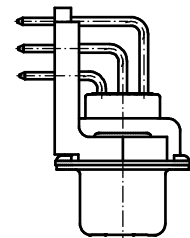
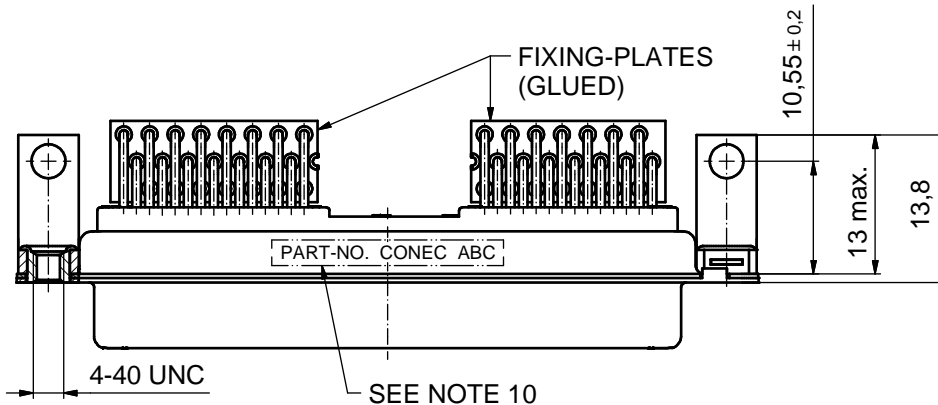
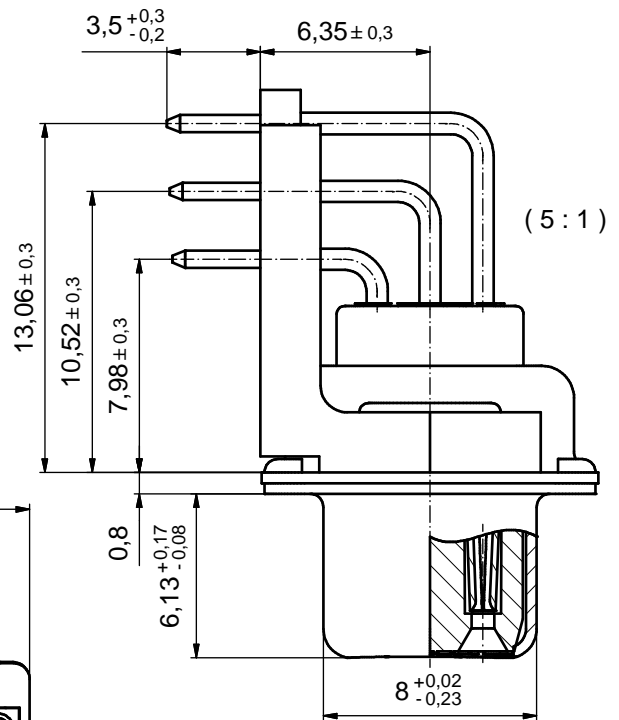
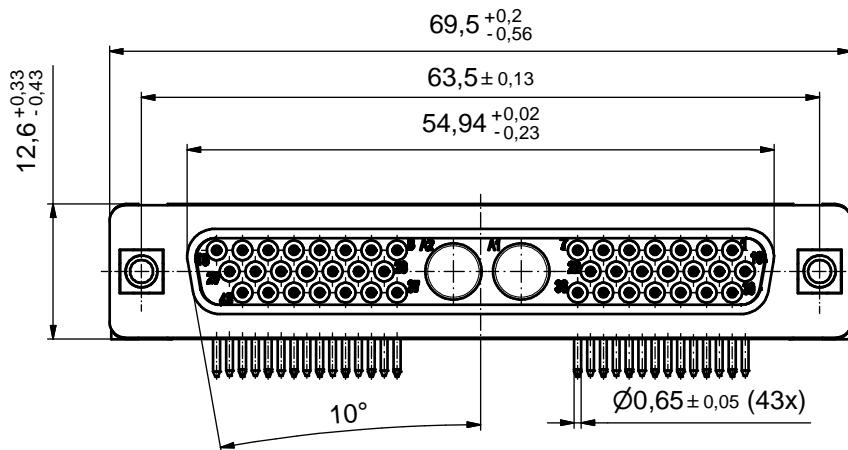


CONTACT PLATING	PART-NO.
SIGNAL CONTACTS GOLD FLASH over NICKEL	3H45W2SAT99G60X
SIGNAL CONTACTS 30µin HARD GOLD over 50µin NICKEL	3H45W2SCT99G60X



NOTES:

- METAL SHELLS: STEEL; min. 315µin TIN over 40-80µin NICKEL
- INSULATORS: PBT GF UL 94 V-0; GREEN
- SIGNAL CONTACTS: COPPER ALLOY  
PLATING: SEE TABLE
- NO CONTACTS ON POS. A1 - A2
- THREADED INSERTS: COPPER ALLOY; min. 200µin TIN over 80µin NICKEL
- METAL BRACKETS: ZINC DIE CAST; 300µin COPPER/40-120µin NICKEL/120-200µin TIN
- FIXING-PLATES: PBT GF UL 94 V-0; BLACK
- P.C.B. HOLE DRILLINGS ON SHEET 2
- MAXIMUM TORQUE VALUE FOR THREAD: 6 in.LB
- CONNECTOR IS PART MARKED: PART-NO. CONEC ABC

Directive 2002/95/EC RoHS compliant

THIS DRAWING MAY NOT BE COPIED OR REPRODUCED IN ANY WAY, AND MAY NOT BE PASSED ON TO A THIRD PARTY WITHOUT WRITTEN PERMISSION. OWNERSHIP AND COPYRIGHT OF CONEC GmbH DO NOT ALTER CAD DRAWING BY HAND	tolerance		dim. in mm	scale: 2:1 (5:1)		
				material: SEE NOTES		
	date	name		title: <b>D-SUB HD COMB. FEMALE 90°</b> 45W2S SOLDER PIN ANGLED threaded insert, metal bracket, fixing-plate		
	drawn	19.03.13	Liedmann			
	appd.	19.03.13	Koch			
norm			dwg no:			
d-old			13K1A4255			
a	Original			DIN-A3		
rev.	description	date	name	sh: 1		
<b>CONEC</b>				part no: SEE TABLE		