

**Technical specification/**

**Technische Daten:**

Working voltage/ <i>Betriebsspannung:</i>	100 VDC
Current rating/ <i>Strombelastbarkeit:</i>	30 A High power contact/ <i>Hochstromkontakt</i>
Insulation resistance/ <i>Isolationswiderstand:</i>	≥ 1 GΩ
Dielectric withstanding voltage/ <i>Spannungsfestigkeit (DWV):</i>	707 VDC
Temperature working range/ <i>Umgebungstemperatur:</i>	- 55 °C ... + 125 °C
Mating cycles/ <i>Steckzyklen:</i>	Quality class 3 = 50 <i>Gütestufe 3</i>
Capacitance value/ <i>Kapazitätswert:</i>	47 nF ± 20%

**Materials/**

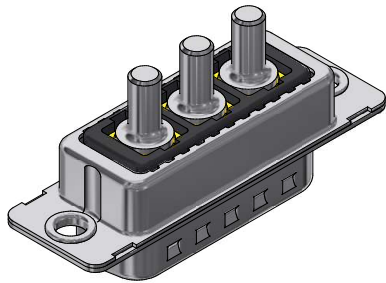
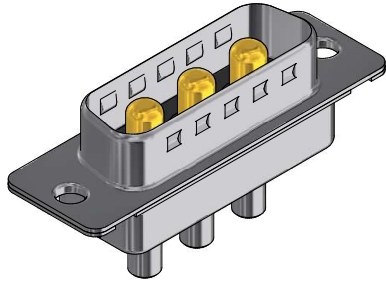
**Werkstoffe:**

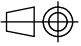

Contact/ <i>Kontakt:</i>	Cu alloy, mating area/ <i>Steckbereich:</i> Au over Ni termination side/ <i>Anschluss Seite:</i> Sn over Ni
Insulator/ <i>Isolierkörper:</i>	PBT GF UL 94 V-0, black/ <i>schwarz</i>
Shell/ <i>Gehäuse:</i>	Steel, Sn over Ni

**Installation specification/**

**Montagedaten:**

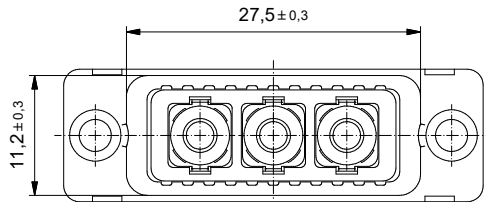
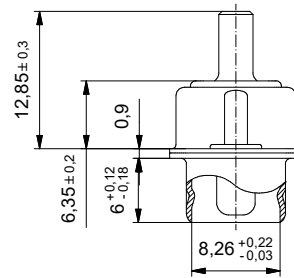
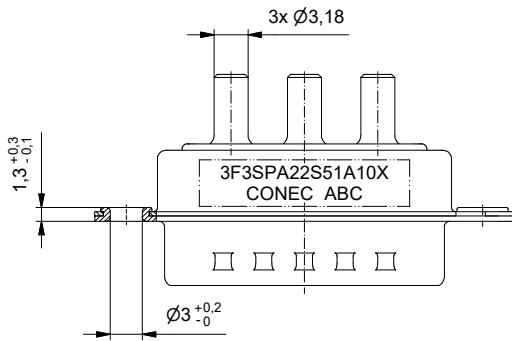
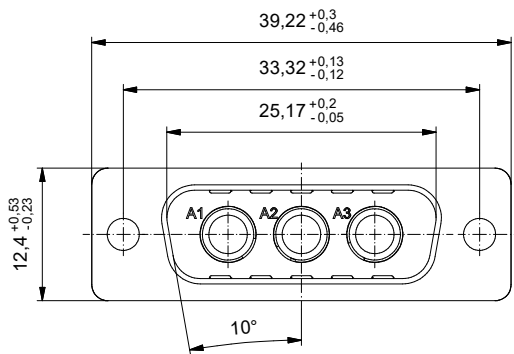
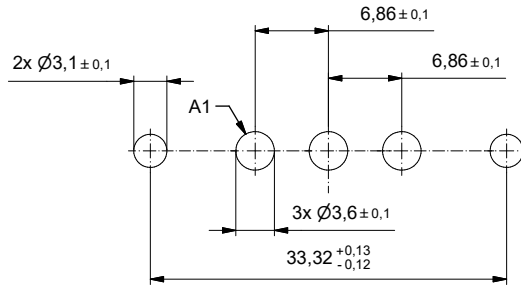
Solder parameter/ <i>Lötparameter:</i>	
Solder preheat temperature/ <i>Vorheiztemperatur:</i>	120 °C for 120 sec./ <i>120 °C für 120 Sek.</i>
Solder bath temperature/ <i>Lötbadtemperatur:</i>	260 °C for 5 sec./ <i>260 °C für 5 Sek.</i>
PCB hole drillings/ <i>Leiterplattenbohrbild:</i>	see sheet 2 <i>siehe Seite 2</i>



Part no. / Part marked/ <i>Art.-Nr. / Bedruckung:</i>		Contact plating/ <i>Kontakt Veredelung:</i>	
3F3SPA22S51A10X		High power contact 30 A/ <i>Hochstromkontakt 30 A:</i>	plating, mating area/ <i>Veredelung, Steckbereich:</i> gold flash over nickel <i>Gold über Nickel</i> plating, termination side/ <i>Veredelung, Anschluss Seite:</i> tin over nickel <i>Zinn über Nickel</i>
		 dim. in mm	D-SUB Filter Combination Male 3F3SP Solder pin
		Date/ <i>Datum</i>	Name
		25.07.2024	Lehmenkühler
		appd./ gepr.	Bub
Index: Original		Scale/ <i>Maßstab:</i>	dwg no / <i>Z.-nr.:</i>
		2:1	24K1A2552
ROHS compliant, exemption 6c/ <i>ROHS konform, Ausnahme 6c</i>			DIN-A3
			1 / 2

The reproduction, distribution and sale of this document as well as the communication of its contents to others without express authorization is prohibited. Offenders will be held liable for the payment of damages. We reserve the right to withdraw advertising and/or to discontinue the publication of this document at any time without notice.

PCB hole drillings  
(PCB top side)  
Leiterplattenbohrbild  
(Leiterplatten Oberseite)



This reproduction, distribution and utilization of this document as well as the communication of its contents to others without express authorization is prohibited. Offenders will be held liable for the payment of damages. For further information on our legal notices please refer to our website: www.conec.com.

		dim. in mm		D-SUB Filter Combination Male 3F3SP Solder pin	
				D-SUB Filter Combination Stiftleiste 3F3SP Lötstift	
		Date/Datum	Name		
		drawn/ges.	25.07.2024	Lehmenkühler	
		appd./gepr.	26.07.2024	Bub	
Index: Original	Scale/Maßstab:			dwg no / Z.-nr.:	24K1A2552
ROHS compliant, exemption 6c/ ROHS konform, Ausnahme 6c	2:1				DIN-A3
					2 / 2