

**Technical specification/**

**Technische Daten:**

Dielectric withstanding voltage/ Spannungsfestigkeit:	1000 V, 50 Hz 1 min.
Current rating/ Strombelastbarkeit:	20 A
Insulation resistance/ Isolationswiderstand:	≥ 5 GΩ
Temperature range/ Temperaturbereich:	- 55 °C ... + 125 °C
Mating cycles/ Steckzyklen:	Quality class 3 = 50 Gütestufe 3

**Materials/**

**Werkstoffe:**

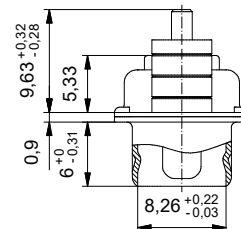
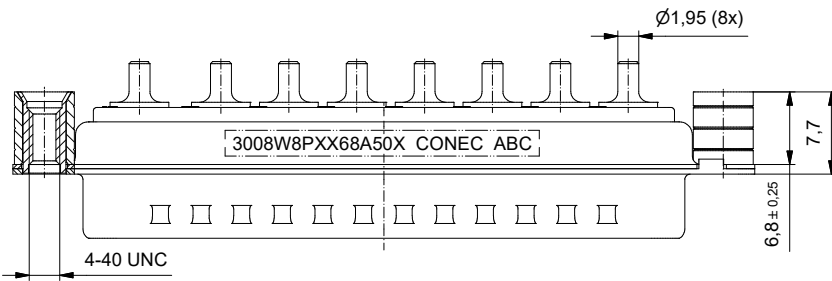
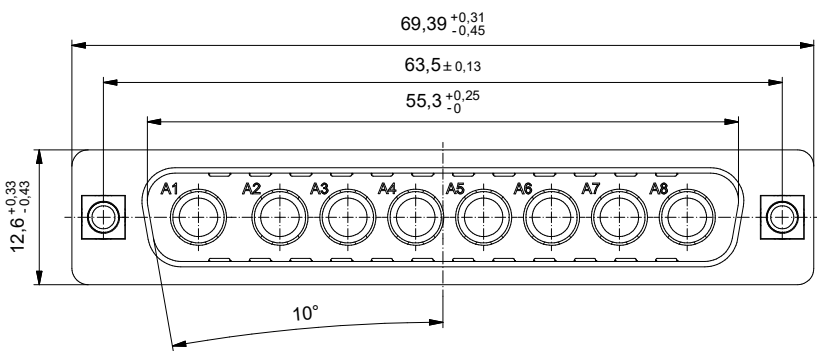
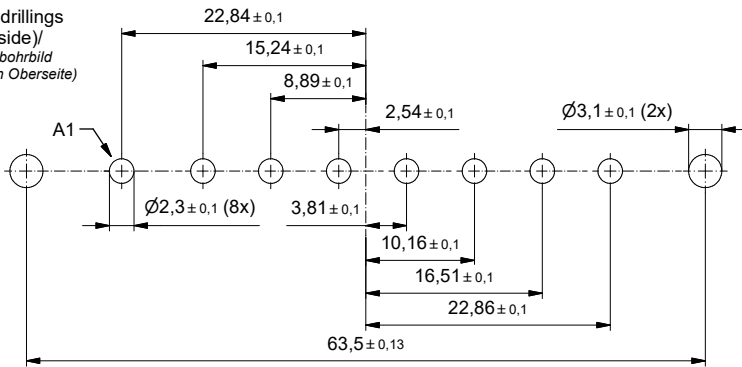
Contact/ Kontakt:	Cu alloy, Au over Ni
Insulator/ Isolierkörper:	PBT GF UL 94 V-0, green/grün
Shell/ Gehäuse:	Steel, Sn over Ni
Threaded rear spacer/ Gewinde-Abstandsbolzen:	Cu alloy, Sn over Ni
Sleeve/ Hülse:	Cu alloy, Sn over Ni

**Installation specification/**

**Montagedaten:**

Recommended torque value for thread/ Empfohlenes Drehmoment für Gewinde:	max. 6 in.LB/ max. 67 Ncm
---	------------------------------

PCB hole drillings  
(PCB top side)  
Leiterplattenbohrbild  
(Leiterplatten Oberseite)



Part no. / Part marked/ Art.-Nr. / Bedruckung:	3008W8PXX68A50X	Contact plating/ Kontakt Veredelung:	High power contact 20 A/ Hochstromkontakt 20 A:	plating, mating area: Veredelung, Steckbereich:	gold flash over nickel Gold über Nickel
				plating, termination side: Veredelung, Anschluss Seite:	tin over nickel Zinn über Nickel
Index:	a Original	Scale/ Maßstab:	2:1	D-SUB Combination Male 8W8P with threaded rear spacer D-SUB Combination Stiftleiste 8W8P mit Gewinde-Abstandsbolzen	
Status:	Freigegeben	CONEC®		dwg no / Z.-nr.:	13K1A6138
RoHS compliant/ konform					DIN-A3 1 / 1

This reproduction, distribution and utilization of this document as well as the communication of its contents to others without express authorization is prohibited. Offenders will be held liable for the payment of damages. For further information on our legal notices please refer to our website: www.conec.com. Copyright © 2020 Conec Technology AG. All rights reserved.