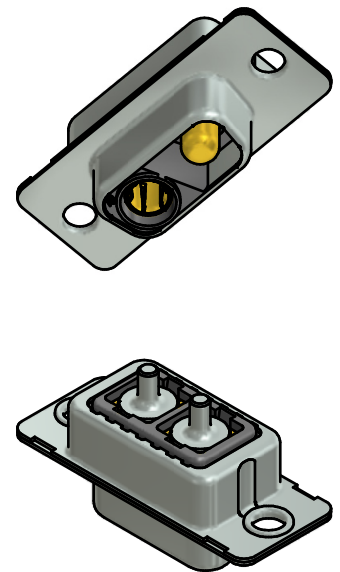
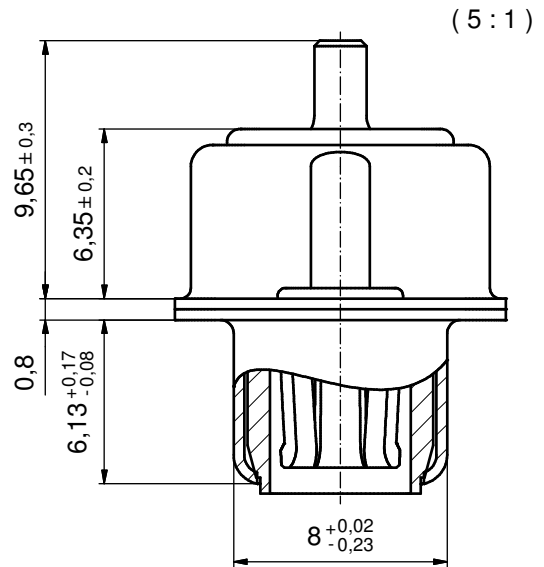
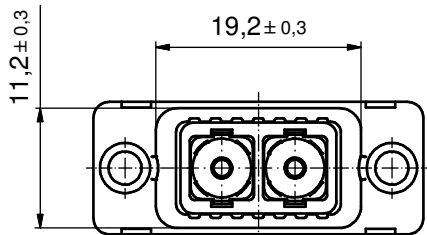
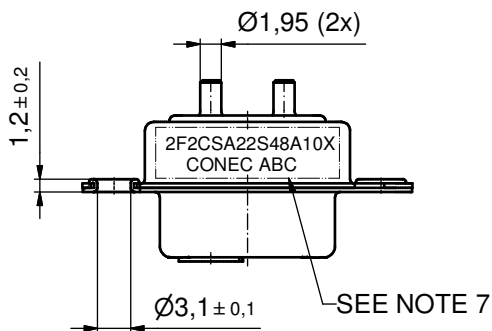
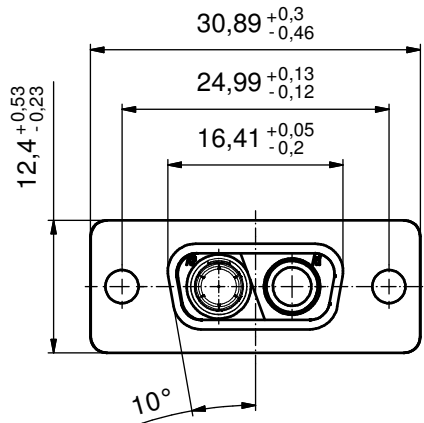


P.C.B. HOLE DRILLINGS
(P.C.B. TOP SIDE)



NOTES:

- FOR WAVESOLDERING (SOLDER BATH TEMPERATURE 260°C FOR 5 SEC. AND SOLDER PREHEAT 100°C FOR 30 SEC.)
- METALSHELLS: STEEL; min. 315µin TIN over 40-80µin NICKEL
- INSULATOR: PBT GF UL 94 V-0; BLACK
- HIGH POWER CONTACTS 20A: COPPER ALLOY PLATING, MATING AREA: GOLD FLASH over NICKEL PLATING, TERMINATION SIDE: 160-240µin TIN over 80µin NICKEL MALE CONTACT ON POS. A1; FEMALE CONTACT ON POS. A2
- CAPACITANCE: 47nF ±20%
- DIELECTRIC WITHSTANDING VOLTAGE: 707 VDC
- CONNECTOR IS PART MARKED: 2F2CSA22S48A10X CONEC ABC

Directive 2002/95/EC RoHS compliant

THIS DRAWING MAY NOT BE COPIED OR REPRODUCED IN ANY WAY, AND MAY NOT BE PASSED ON TO A THIRD PARTY WITHOUT WRITTEN PERMISSION. OWNERSHIP AND COPYRIGHT OF CONEC GmbH DO NOT ALTER CAD DRAWING BY HAND	tolerance		dim. in mm	scale: 2:1 (5:1)	
				material: SEE NOTES	
	date	name	title:		
	drawn 16.04.14	Henneboel	C-FILTER COMBINATION FEMALE		
	appd. 16.04.14	sCHMIDT	2W2CS SOLDER CUP		
	norm		dwg no:		
	d-old		24K1A1521		DIN-A3
rev. a	Original			sh: 1	
description	date			part no: 2F2CSA22S48A10X	