

Technical specification/

Technische Daten:

Working voltage/ Betriebsspannung:	100 VDC
Current rating/ Strombelastbarkeit:	40 A
Insulation resistance/ Isolationswiderstand:	≥ 1 GΩ
Dielectric withstanding voltage/ Spannungsfestigkeit (DWV):	707 VDC
Temperature working range/ Umgebungstemperatur:	- 55 °C ... + 125 °C
Mating cycles/ Steckzyklen:	Quality class 3 = 50 Gütestufe 3
Capacitance value/ Kapazitätswert:	47 nF ± 20%

Materials/

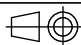

Werkstoffe:

Contact/ Kontakt:	Cu alloy, mating area/ Au over Ni termination side/ Sn over Ni
Insulator/ Isolierkörper:	PBT GF UL94 V-0, black/schwarz
Shell/ Gehäuse:	Steel, Sn over Ni

Installation specification/

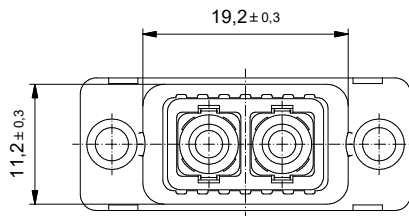
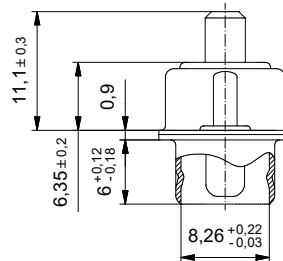
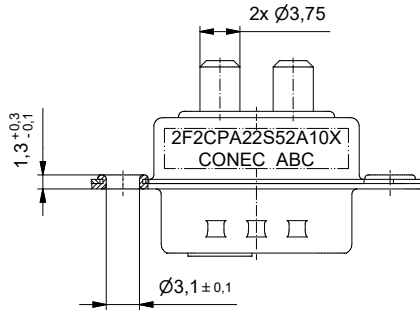
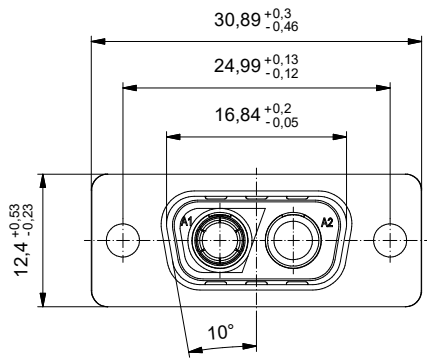
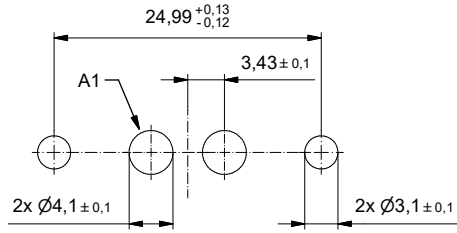
Montagedaten:

Solder parameter for wavesoldering/ Lötparameter im Wellenlötverfahren:	
Solder preheat temperature/ Vorheiztemperatur:	120 °C for 120 sec./ 120 °C für 120 Sek.
Solder bath temperature/ Lötbadtemperatur:	260 °C for 5 sec./ 260 °C für 5 Sek.
PCB hole drillings/ Leiterplattenbohrbild:	see sheet 2 siehe Seite 2
Contact assignment/ Kontakt Bestückung:	Female contact on pos. A1/ Buchsenkontakt auf Pos. A1 Male contact on pos. A2/ Stiftkontakt auf Pos. A2



Part no. / Part marked/ Art.-Nr. / Bedruckung:	2F2CPA22S52A10X	Contact plating/ Kontakt Veredelung:	High power contact 40 A/ Hochstromkontakt 40 A:	plating, mating area/ Veredelung, Steckbereich: plating, termination side/ Veredelung, Anschluss Seite:	gold flash over nickel Gold über Nickel tin over nickel Zinn über Nickel						
		 dim. in mm		D-SUB Filter Combination Male 2F2CP solder pin straight D-SUB Filter Combination Stiftleiste 2F2CP Lötstift gerade							
		<table border="1"> <tr> <th>Date/Datum</th> <th>Name</th> </tr> <tr> <td>13.12.2024</td> <td>Lehmenkühler</td> </tr> <tr> <td>16.12.2024</td> <td>Bub</td> </tr> </table>	Date/Datum	Name	13.12.2024	Lehmenkühler	16.12.2024	Bub			
Date/Datum	Name										
13.12.2024	Lehmenkühler										
16.12.2024	Bub										
Index:	a Original	Scale/Maßstab:	2:1		dwg no / Z.-nr.: 24K1A2562						
ROHS compliant, exemption 6c/ ROHS konform, Ausnahme 6c					DIN-A3 1 / 2						

The reproduction, distribution and utilization of this document as well as the communication of its contents to others without express authorization is prohibited. Offenders will be held liable for the payment of damages. We reserve the right to withdraw advertising and/or to terminate the use of the website at any time without notice and to sue for damages.

PCB hole drillings
(PCB top side)
Leiterplattenbohrbild
(Leiterplatten Oberseite)



The reproduction, distribution and utilization of this document as well as the communication of its contents to others without express authorization is prohibited. Offenders will be held liable for the payment of damages. For further information on our legal notices please refer to our website: www.conec.com.

		 dim. in mm		D-SUB Filter Combination Male 2F2CP solder pin straight <i>D-SUB Filter Combination Stiftleiste 2F2CP</i> Lötstift gerade	
		Date/Datum	Name		
		drawn/ges.	13.12.2024	Lehmenkühler	
		appd./gepr.	16.12.2024	Bub	
Index: a Original	Scale/Maßstab: 2:1			dwg no / Z.-nr.: 24K1A2562	DIN-A3
ROHS compliant, exemption 6c/ ROHS konform, Ausnahme 6c					2 / 2