

| Part no. / Part marked/ Art.-Nr. / Bedruckung: | Quality class/ Gütestufe: | Contact plating/ Kontakt Veredlung: | Capacitance value/ Kapazitätswert: |
|---|------------------------------|--|---------------------------------------|
| 24-008013 | 3 | Gold flash over nickel <i>Gold über Nickel</i> | 370 pF ± 20 % |
| 24-008012 | 2 | 20 µin hard gold over min. 50 µin nickel <i>20 µin Gold über min. 50 µin Nickel</i> | |
| 24-008011 | 1 | 30 µin hard gold over min. 50 µin nickel <i>30 µin Gold über min. 50 µin Nickel</i> | |
| 24-008023 | 3 | Gold flash over nickel <i>Gold über Nickel</i> | 830 pF ± 20 % |
| 24-008022 | 2 | 20 µin hard gold over min. 50 µin nickel <i>20 µin Gold über min. 50 µin Nickel</i> | |
| 24-008021 | 1 | 30 µin hard gold over min. 50 µin nickel <i>30 µin Gold über min. 50 µin Nickel</i> | |
| 24-008033 | 3 | Gold flash over nickel <i>Gold über Nickel</i> | 1300 pF ± 20 % |
| 24-008032 | 2 | 20 µin hard gold over min. 50 µin nickel <i>20 µin Gold über min. 50 µin Nickel</i> | |
| 24-008031 | 1 | 30 µin hard gold over min. 50 µin nickel <i>30 µin Gold über min. 50 µin Nickel</i> | |

Technical specification/ *Technische Daten:*

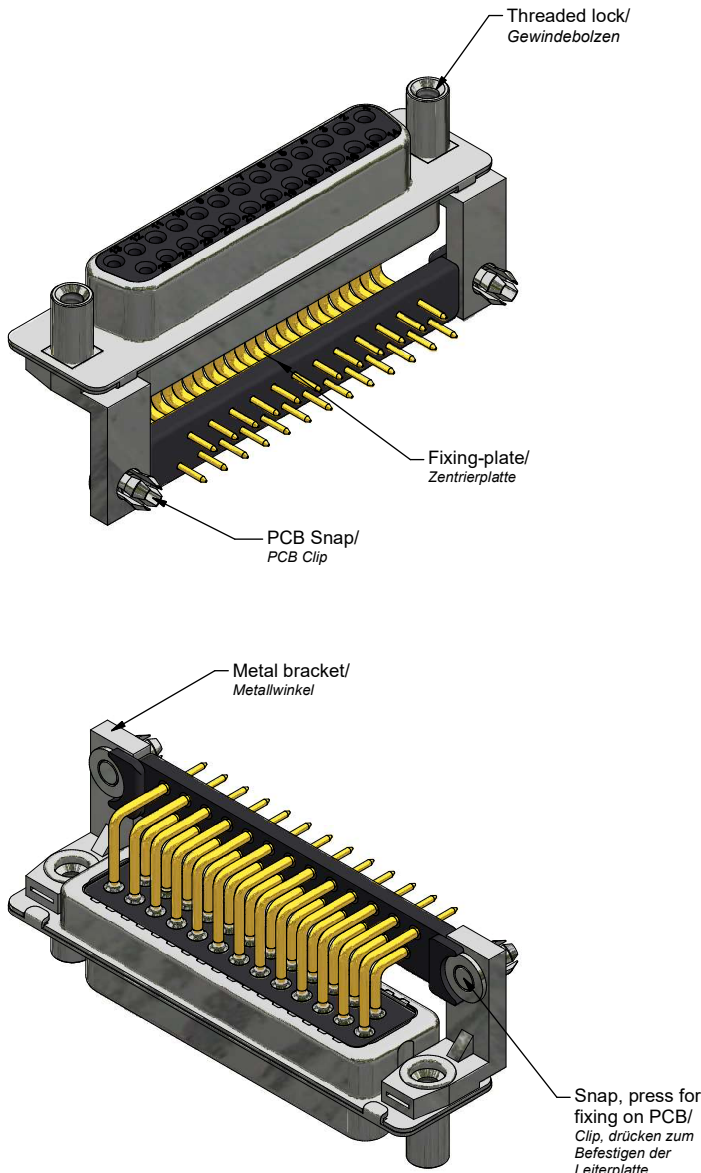
| | |
|--|--|
| Working voltage/ <i>Betriebsspannung:</i> | 100 VDC |
| Current rating/ <i>Strombelastbarkeit:</i> | 5 A |
| Insulation resistance/ <i>Isolationswiderstand:</i> | ≥ 1 GΩ |
| Dielectric withstanding voltage/ <i>Spannungsfestigkeit (DWV):</i> | 424 VDC |
| Temperature working range/ <i>Umgebungstemperatur:</i> | - 25 °C ... + 105 °C |
| Capacitance value/ <i>Kapazitätswert:</i> | see Table/ <i>siehe Tabelle</i> |
| Mating cycles (see table)/ <i>Steckzyklen</i> (siehe Tabelle): | Quality class 1 = 500 <i>Gütestufe 1</i> Quality class 2 = 200 <i>Gütestufe 2</i> Quality class 3 = 50 <i>Gütestufe 3</i> |

Materials/ *Werkstoffe:*

| | |
|---|--|
| Contact/ <i>Kontakt:</i> | Cu alloy, Au over Ni Contact tails pretinned/ <i>Kontaktspitzen verzinkt</i> |
| Insulator/ <i>Isolierkörper:</i> | High temp. PA UL 94 V-0 |
| Shell/ <i>Gehäuse:</i> | Steel, Sn over Ni |
| Threaded Lock/ <i>Gewindebolzen:</i> | Cu alloy, Sn over Ni |
| Metal bracket/ <i>Metallwinkel:</i> | GD-Zn, Sn over Ni |
| PCB snap/ <i>PCB Clip:</i> | Cu alloy, Sn over Ni |
| Fixing plate/ <i>Zentrierplatte:</i> | High temp. PA UL 94 V-0 |

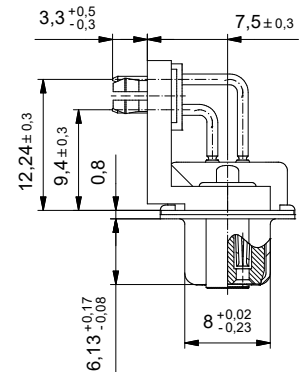
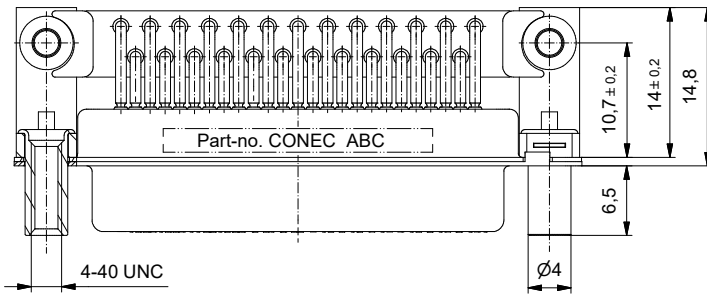
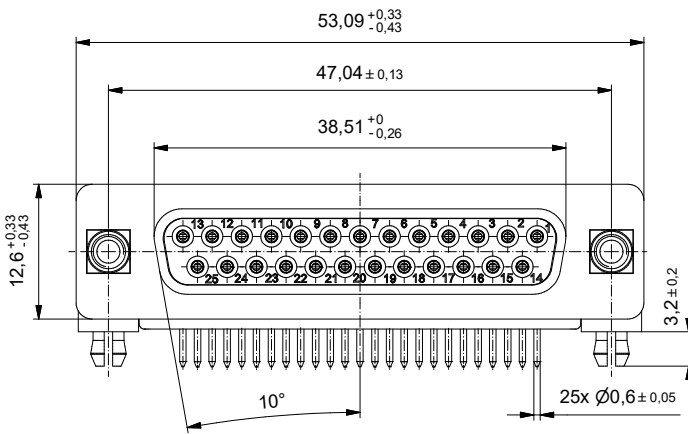
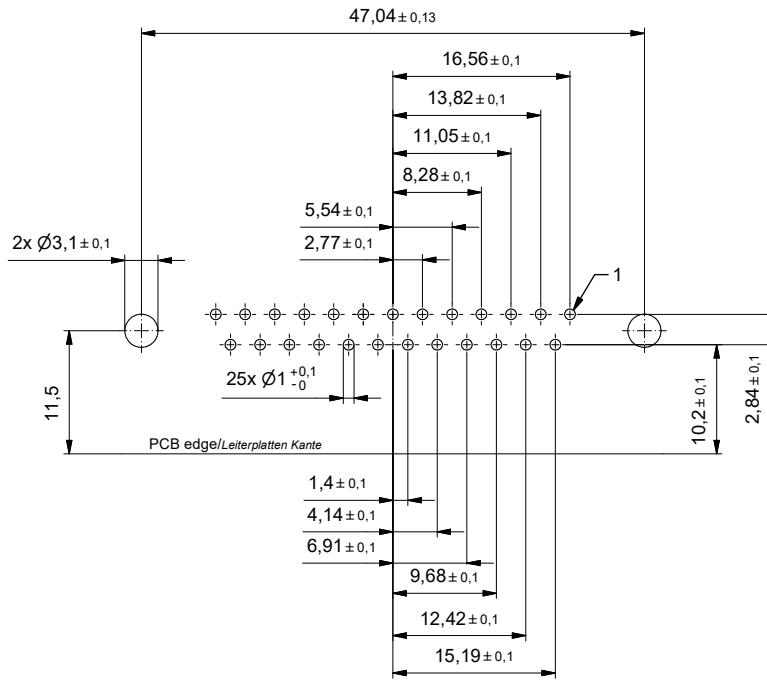
Installation specification/ *Montagedaten:*

| | |
|---|--|
| Solder parameter/ <i>Lötparameter:</i> | |
| Solder preheat temperature/ <i>Vorheiztemperatur:</i> | 100 °C for 30 sec./ <i>100 °C für 30 Sek.</i> |
| Solder bath temperature/ <i>Lötbadtemperatur:</i> | 260 °C for 5 sec./ <i>260 °C für 5 Sek.</i> |
| PCB hole drillings/ <i>Leiterplattenbohrbild:</i> | see sheet 2/ <i>siehe Seite 2</i> |
| Recommended torque value for thread/ <i>Empfohlenes Drehmoment für Gewinde:</i> | max. 6 in.LB/ <i>max. 67 Ncm</i> |
| PCB snap for hole diameter/ <i>PCB Clip für Lochdurchmesser:</i> | Ø3,1 mm |
| Circuit board thickness/ <i>Leiterplattenstärke:</i> | 1,6 mm |



| | | | | | |
|------------------------|----------------|-------------|--------------|--|-----------|
| | | dim. in mm | | D-SUB C-Filter Female 25pos. Solder pin angled 0.370 inch with threaded lock, metal bracket, fixing plate and PCB snap <i>D-SUB C-Filter Buchse 25pol. Lötstift abgewinkelt 9,4 mm mit Gewindebolzen, Metallwinkel, Zentrierplatte und PCB-Clip</i> | |
| | | Date/Datum | Name | | |
| | | drawn/ges. | 19.10.2022 | J.Brandt | |
| | | appd./gepr. | 25.10.2022 | H.Schmidt | |
| Index: a Original | Scale/Maßstab: | 2:1 | | dwg no / Z.-nr.: | 24K1A2392 |
| RoHS compliant/konform | | | CONEC | DIN-A3 | 1 / 2 |

PCB hole drillings
(PCB top side)/
Leiterplattenbohrbild
(Leiterplatten Oberseite)



| | | | | | | |
|------------------------|-----------------------|--------------------------|------------|---|-----------|--------|
| | | dim. in mm | | D-SUB C-Filter Female 25pos. Solder pin angled 0.370 inch with threaded lock, metal bracket, fixing plate and PCB snap D-SUB C-Filter Buchse 25pol. Lötstift abgewinkelt 9,4 mm mit Gewindebolzen, Metallwinkel, Zentrierplatte und PCB-Clip | | |
| | | Date/Datum | Name | | | |
| | | drawn/ges. 19.10.2022 | J.Brandt | | | |
| | | appd./gepr. | 25.10.2022 | H.Schmidt | | |
| Index: a Original | Scale/Maßstab: 2:1 | | | dwg no / Z.-nr.: | 24K1A2392 | DIN-A3 |
| RoHS compliant/konform | | | | | | 2 / 2 |

The reproduction, distribution and sale of this document as well as the communication of its content to others without express authorization is prohibited. Offenders will be held liable for the payment of damages. We reserve the right to withdraw from circulation and/or to destroy copies of printed documents and/or electronic data files at any time without notice.