

Part no. / Part marked/ Art.-Nr. / Bedruckung:	Quality class/ Gütestufe:	Contact plating/ Kontakt Veredlung:	Capacitance value/ Kapazitätswert:
24-004123	3	Gold flash over nickel <i>Gold über Nickel</i>	370 pF ± 20 %
24-004122	2	20 µm hard gold over min. 50 µm nickel <i>20 µm Gold über min. 50 µm Nickel</i>	
24-004121	1	30 µm hard gold over min. 50 µm nickel <i>30 µm Gold über min. 50 µm Nickel</i>	
24-004133	3	Gold flash over nickel <i>Gold über Nickel</i>	830 pF ± 20 %
24-004132	2	20 µm hard gold over min. 50 µm nickel <i>20 µm Gold über min. 50 µm Nickel</i>	
24-004131	1	30 µm hard gold over min. 50 µm nickel <i>30 µm Gold über min. 50 µm Nickel</i>	
24-004143	3	Gold flash over nickel <i>Gold über Nickel</i>	1300 pF ± 20 %
24-004142	2	20 µm hard gold over min. 50 µm nickel <i>20 µm Gold über min. 50 µm Nickel</i>	
24-004141	1	30 µm hard gold over min. 50 µm nickel <i>30 µm Gold über min. 50 µm Nickel</i>	

### Technical specification/ *Technische Daten:*

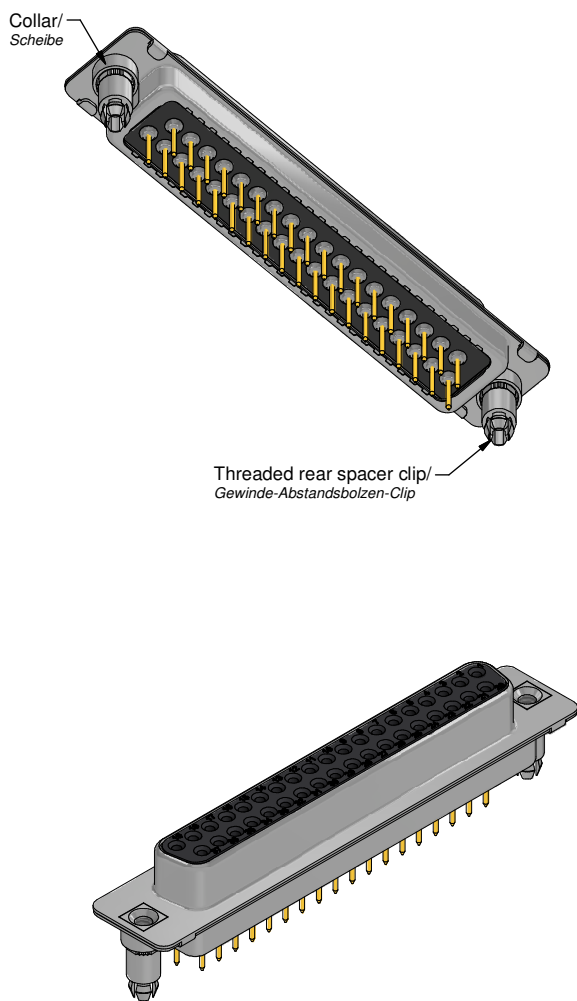
Working voltage/ <i>Betriebsspannung:</i>	100 VDC
Current rating/ <i>Strombelastbarkeit:</i>	5 A
Insulation resistance/ <i>Isolationswiderstand:</i>	≥ 1 GΩ
Dielectric withstanding voltage/ <i>Spannungsfestigkeit (DWV):</i>	424 VDC
Temperature working range/ <i>Umgebungstemperatur:</i>	- 25 °C ... + 105 °C
Capacitance value/ <i>Kapazitätswert:</i>	see table/ <i>siehe Tabelle</i>
Mating cycles (see table)/ <i>Steckzyklen</i> (siehe Tabelle):	Quality class 1 = 500 <i>Gütestufe 1</i> Quality class 2 = 200 <i>Gütestufe 2</i> Quality class 3 = 50 <i>Gütestufe 3</i>

### Materials/ *Werkstoffe:*

Contact/ <i>Kontakt:</i>	Cu alloy, Au over Ni Contact tails pretinned/ <i>Kontaktspitzen verzinkt</i>
Insulator/ <i>Isolierkörper:</i>	High temp. PA UL 94 V-0
Shell/ <i>Gehäuse:</i>	Steel, Sn over Ni
Threaded rear spacer clip/ <i>Gewinde-Abstandsbolzen-Clip:</i>	Cu alloy, Sn over Ni
Collar/ <i>Scheibe:</i>	Cu alloy, Sn over Ni

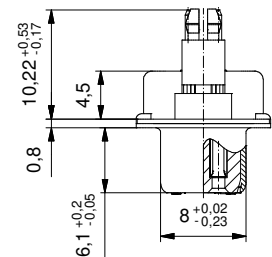
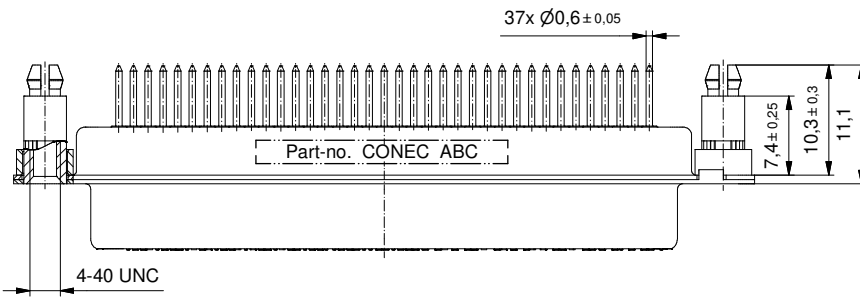
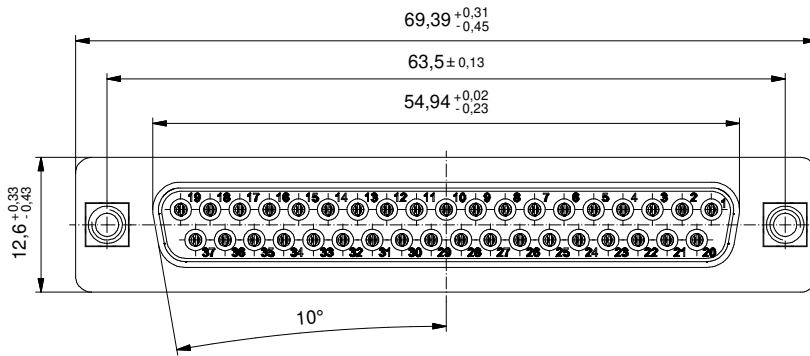
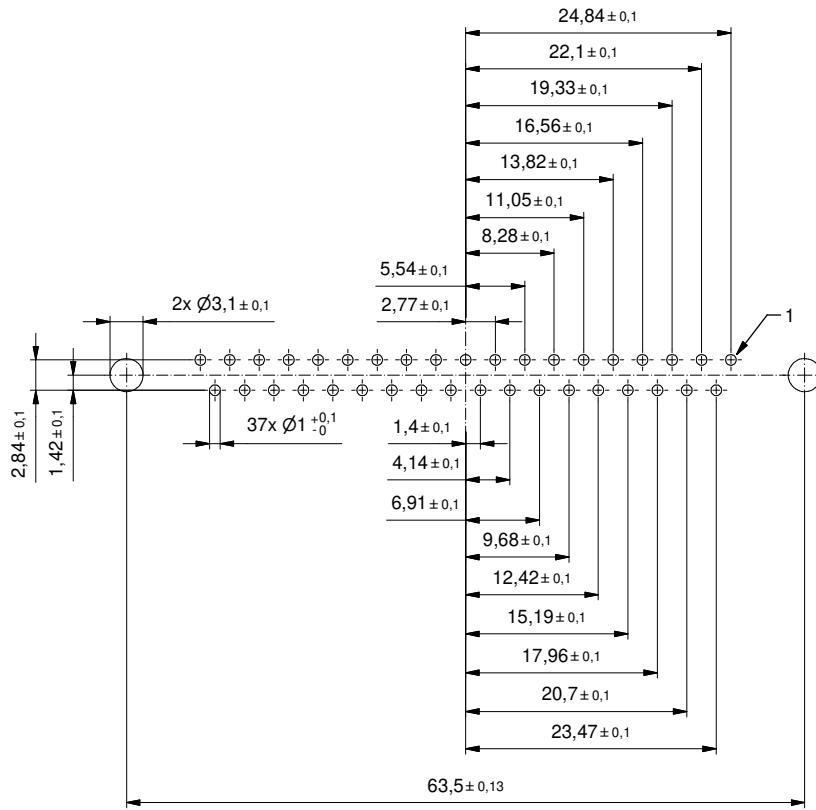
### Installation specification/ *Montagedaten:*

Solder parameter/ <i>Lötparameter:</i>	
Solder preheat temperature/ <i>Vorheiztemperatur:</i>	100 °C for 30 sec./ <i>100 °C für 30 Sek.</i>
Solder bath temperature/ <i>Lötbadtemperatur:</i>	260 °C for 5 sec./ <i>260 °C für 5 Sek.</i>
PCB hole drillings/ <i>Leiterplattenbohrbild:</i>	see sheet 2/ <i>siehe Seite 2</i>
Recommended torque value for thread/ <i>Empfohlenes Drehmoment</i> für Gewinde:	max. 6 in.LB/ <i>max. 67 Ncm</i>
PCB snap for hole diameter/ <i>PCB Clip für</i> <i>Lochdurchmesser:</i>	Ø3,1 mm
Circuit board thickness/ <i>Leiterplattenstärke:</i>	1,6 mm



		dim. in mm		D-SUB C-Filter Female 37pos. Solder pin straight with threaded rear spacer clip	
		Date/Datum	Name	D-SUB C-Filter Buchsenleiste 37pol. Lötstift gerade mit Gewinde-Abstandsbolzen-Clip	
		drawn/ gez.	23.03.2022	Henneboel	
		appd./ gepr.	23.03.2022	Lehmenkühler	
Index: a Original	scale/Maßstab: 2:1	CONEC®		dwg no / Z.-nr.:	24K1A2232
RoHS compliant/konform				DIN- A3	1 / 2

PCB hole drillings  
(PCB top side)  
Leiterplattenbohrbild  
(Leiterplatten Oberseite)



This reproduction, distribution and utilization of this document as well as the communication of its content to others without express authorization is prohibited. Offenders will be held liable for the payment of damages. We reserve the right to withdraw advertising and notices, even if they have already been published. Zuerstveröffentlichung im Fachjournal.

		dim. in mm		D-SUB C-Filter Female 37pos. Solder pin straight with threaded rear spacer clip	
		Date/Datum	Name	D-SUB C-Filter Buchsenleiste 37pol. Lötstift gerade mit Gewinde-Abstandsbolzen-Clip	
		drawn/gez.	23.03.2022	Henneboel	
		appd./gepr.	23.03.2022	Lehmenkühler	
Index: a Original	scale/Maßstab:	2:1		dwg no / Z.-nr.:	24K1A2232
RoHS compliant/konform				DIN-A3	2 / 2