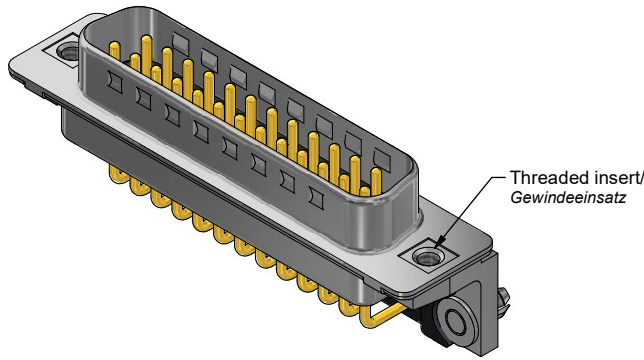


Part no. / Part marked/ Art.-Nr. / Bedruckung:	Quality class/ Gütestufe:	Contact plating/ Kontakt Veredelung:	Capacitance value/ Kapazitätswert:
24-003924	4	50 µin hard gold over min. 50 µin nickel <i>50 µin Gold über min. 50 µin Nickel</i>	370 pF ± 20 %
24-003923	3	Gold flash over nickel <i>Gold über Nickel</i>	
24-003922	2	20 µin hard gold over min. 50 µin nickel <i>20 µin Gold über min. 50 µin Nickel</i>	
24-003921	1	30 µin hard gold over min. 50 µin nickel <i>30 µin Gold über min. 50 µin Nickel</i>	830 pF ± 20 %
24-003933	3	Gold flash over nickel <i>Gold über Nickel</i>	
24-003932	2	20 µin hard gold over min. 50 µin nickel <i>20 µin Gold über min. 50 µin Nickel</i>	
24-003931	1	30 µin hard gold over min. 50 µin nickel <i>30 µin Gold über min. 50 µin Nickel</i>	1300 pF ± 20 %
24-003943	3	Gold flash over nickel <i>Gold über Nickel</i>	
24-003942	2	20 µin hard gold over min. 50 µin nickel <i>20 µin Gold über min. 50 µin Nickel</i>	
24-003941	1	30 µin hard gold over min. 50 µin nickel <i>30 µin Gold über min. 50 µin Nickel</i>	

Technical specification/ *Technische Daten:*

Working voltage/ <i>Betriebsspannung:</i>	100 VDC
Current rating/ <i>Strombelastbarkeit:</i>	5 A
Insulation resistance/ <i>Isolationswiderstand:</i>	≥ 1 GΩ
Dielectric withstanding voltage/ <i>Spannungsfestigkeit (DWV):</i>	424 VDC
Temperature working range/ <i>Umgebungstemperatur:</i>	- 25 °C ... + 105 °C
Capacitance value/ <i>Kapazitätswert:</i>	see table/ <i>siehe Tabelle</i>
Mating cycles (see table)/ <i>Steckzyklen</i> (siehe Tabelle):	Quality class 1 = 500 <i>Gütestufe 1</i> Quality class 2 = 200 <i>Gütestufe 2</i> Quality class 3 = 50 <i>Gütestufe 3</i> Quality class 4 = ≥ 500 <i>Gütestufe 4</i>



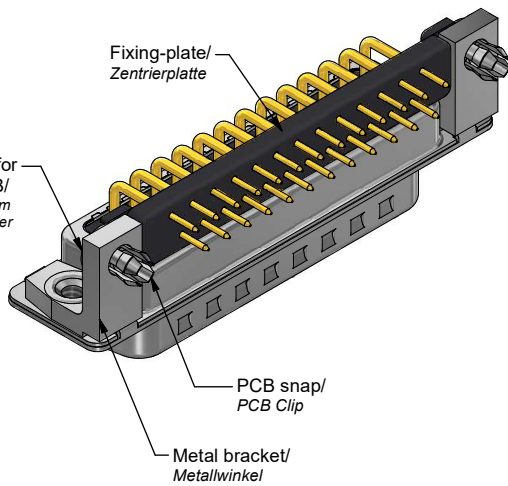
Materials/ *Werkstoffe:*

Contact/ <i>Kontakt:</i>	Cu alloy, Au over Ni Contact tails pretinned/ <i>Kontaktspitzen verzinkt</i>
Insulator/ <i>Isolierkörper:</i>	High temp. PA UL 94 V-0
Shell/ <i>Gehäuse:</i>	Steel, Sn over Ni
Threaded insert/ <i>Gewindeeinsatz:</i>	Cu alloy, Sn over Ni
Fixing plate/ <i>Zentrierplatte:</i>	High temp. PA UL 94 V-0
Metal bracket/ <i>Metallwinkel:</i>	GD-Zn, Sn over Ni
PCB snap/ <i>PCB Clip:</i>	Cu alloy, Sn over Ni

Installation specification/ *Montagedaten:*

Solder parameter/ <i>Lötparameter:</i>	
Solder preheat temperature/ <i>Vorheiztemperatur:</i>	100 °C for 30 sec./ <i>100 °C für 30 Sek.</i>
Solder bath temperature/ <i>Lötbadtemperatur:</i>	260 °C for 5 sec./ <i>260 °C für 5 Sek.</i>
PCB hole drillings/ <i>Leiterplattenbohrbild:</i>	see sheet 2/ <i>siehe Seite 2</i>
Recommended torque value for thread/ <i>Empfohlenes Drehmoment für Gewinde:</i>	max. 6 in.LB/ <i>max. 67 Ncm</i>
PCB snap for hole diameter/ <i>PCB Clip für Lochdurchmesser:</i>	Ø3,1 mm
Circuit board thickness/ <i>Leiterplattenstärke:</i>	1,6 mm

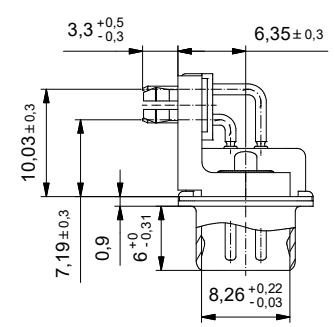
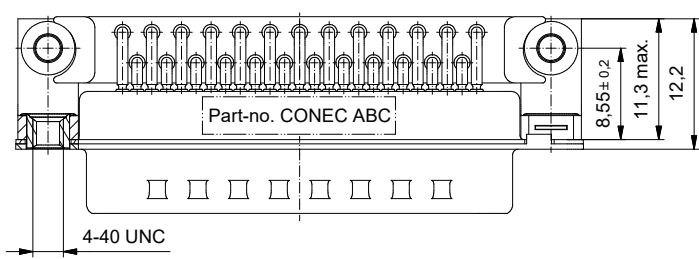
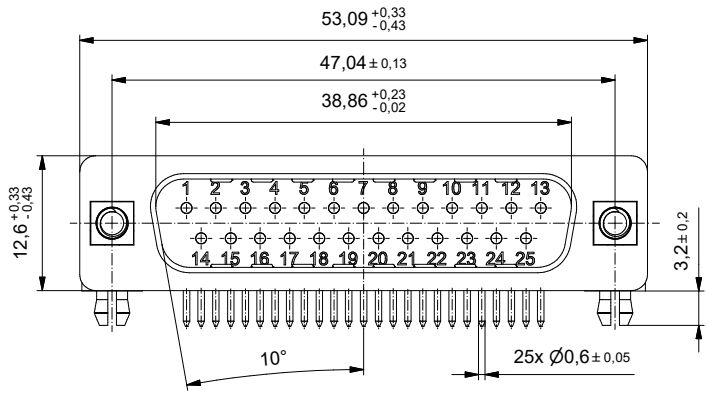
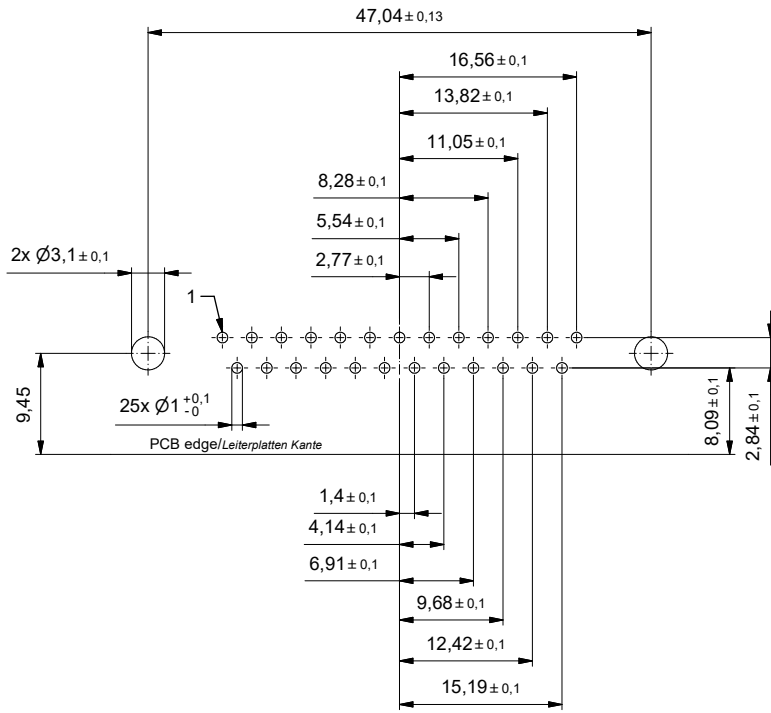
Snap, press for
fixing on PCB/
*Clip, drücken zum
Befestigen auf der
Leiterplatte*



		dim. in mm		D-SUB Filter Male 25pos. Solder pin angled 0.318inch with metal bracket, threaded insert, fixing-plate, PCB snap <i>D-SUB Filter Stift 25pol. Lötstift abgewinkelt 7.19mm mit Metallwinkel, Gewindeeinsatz, Zentrierplatte, PCB Clip</i>	
		Date/Datum	Name		
		drawn/ ges.	18.03.2022	Henneboel	
		appd./ gepr.	18.03.2022	Lehmenkühler	
Index: a Original	Scale/ Maßstab:	2:1		dwg no / Z.-nr.:	24K1A2221
RoHS compliant/ konform			CONEC	DIN- A3	1 / 2

The reproduction, distribution and sale of this document as well as the communication of its contents to others without express authorization is prohibited. Offenders will be held liable for the payment of damages. We reserve the right to withdraw advertising and/or to terminate the use of the website at any time without notice and to sue for damages.

PCB hole drillings
(PCB top side)
Leiterplattenbohrbild
(Leiterplatten Oberseite)



This reproduction, distribution and sale of this document as well as the communication of its content to others without express authorization is prohibited. Offenders will be held liable for the payment of damages. For further information on copyright law, please refer to the copyright notice.

Index: a Original	Scale/Maßstab: 2:1		dim. in mm D-SUB Filter Male 25pos. Solder pin angled 0.318inch with metal bracket, threaded insert, fixing-plate, PCB snap D-SUB Filter Stift 25pol. Lötstift abgewinkelt 7.19mm mit Metallwinkel, Gewindeeinsatz, Zentrierplatte, PCB Clip		DWG no / Z.-nr.: 24K1A2221 DIN-A3 2 / 2
			Date/Datum: 18.03.2022 Name: Henneboel drawn/ges.: 18.03.2022 appd./gepr.: 18.03.2022 Name: Lehnenkühler		
RoHS compliant/konform					