

| Part no. / Part marked/ Art.-Nr. / Bedruckung: | Quality class/ Gütestufe: | Contact plating/ Kontakt Veredelung: | Capacitance value/ Kapazitätswert: |
|---|------------------------------|---|---------------------------------------|
| 24-003013 | 3 | Gold flash over nickel Gold über Nickel | 2 x 370 pF ± 20 % |
| 24-003012 | 2 | 20 µin hard gold over min. 50 µin nickel 20 µin Gold über min. 50 µin Nickel | |
| 24-003011 | 1 | 30 µin hard gold over min. 50 µin nickel 30 µin Gold über min. 50 µin Nickel | |
| 24-003023 | 3 | Gold flash over nickel Gold über Nickel | 2 x 830 pF ± 20 % |
| 24-003022 | 2 | 20 µin hard gold over min. 50 µin nickel 20 µin Gold über min. 50 µin Nickel | |
| 24-003021 | 1 | 30 µin hard gold over min. 50 µin nickel 30 µin Gold über min. 50 µin Nickel | |
| 24-003033 | 3 | Gold flash over nickel Gold über Nickel | 2 x 1300 pF ± 20 % |
| 24-003032 | 2 | 20 µin hard gold over min. 50 µin nickel 20 µin Gold über min. 50 µin Nickel | |
| 24-003031 | 1 | 30 µin hard gold over min. 50 µin nickel 30 µin Gold über min. 50 µin Nickel | |

**Technical specification/
Technische Daten:**

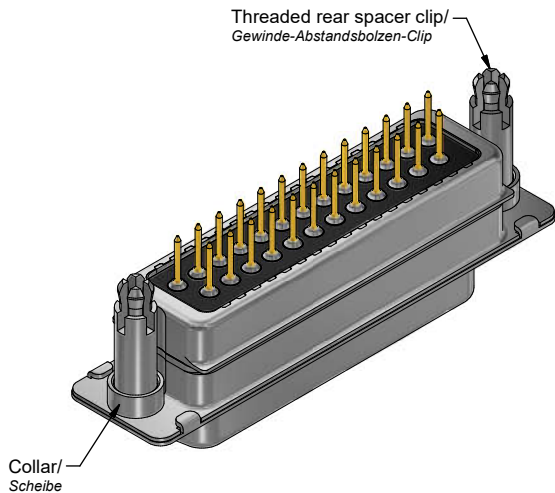
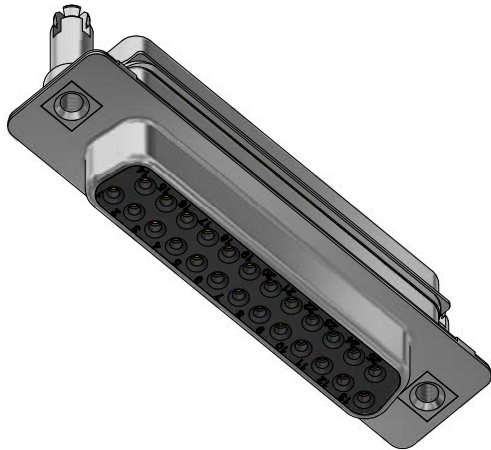
| | |
|---|---|
| Working voltage/ Betriebsspannung: | 100 VDC |
| Current rating/ Strombelastbarkeit: | 5 A |
| Insulation resistance/ Isolationswiderstand: | ≥ 1 GΩ |
| Dielectric withstanding voltage/ Spannungsfestigkeit (DWW): | 300 VDC |
| Temperature working range/ Umgebungstemperatur: | - 25 °C ... + 105 °C |
| Capacitance value/ Kapazitätswert: | see table/ siehe Tabelle |
| Mating cycles (see table)/ Steckzyklen (siehe Tabelle): | Quality class 1 = 500 Gütestufe 1 Quality class 2 = 200 Gütestufe 2 Quality class 3 = 50 Gütestufe 3 |

**Materials/
Werkstoffe:**

| | |
|---|---|
| Contact/ Kontakt: | Cu alloy, Au over Ni Contact tails pretinned/ Kontaktspitzen verzinkt |
| Insulator/ Isolierkörper: | High temp. PA UL 94 V-0 |
| Shell/ Gehäuse: | Steel, Sn over Ni |
| Threaded rear spacer clip/ Gewinde- Abstandsbolzen-Clip: | Cu alloy, Sn over Ni |
| Collar/ Scheibe: | Cu alloy, Sn over Ni |

**Installation specification/
Montagedaten:**

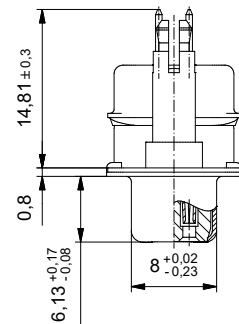
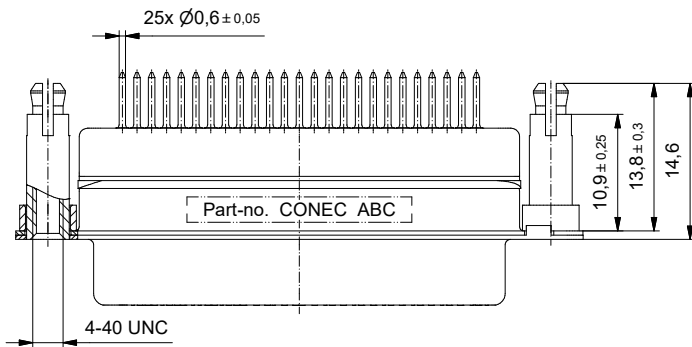
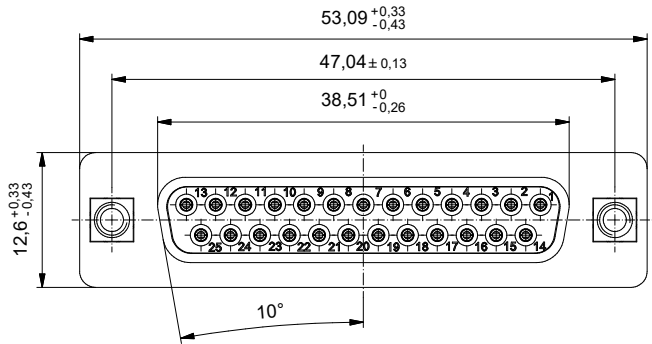
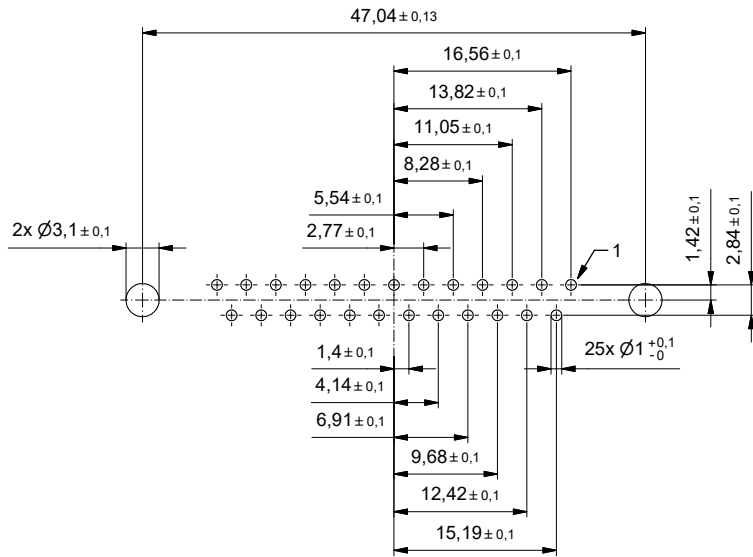
| | |
|---|---|
| Solder parameter/ Lötparameter: | |
| Solder preheat temperature/ Vorheiztemperatur: | 100 °C for 30 sec./ 100 °C für 30 Sek. |
| Solder bath temperature/ Lötbadtemperatur: | 260 °C for 5 sec./ 260 °C für 5 Sek. |
| Recommended torque value for thread/ Empfohlenes Drehmoment für Gewinde: | max. 6 in.LB/ max. 67 Ncm |
| PCB clip for hole diameter/ PCB Clip für Lochdurchmesser: | Ø3,1 mm |
| Circuit board thickness/ Leiterplattenstärke: | 1,6 mm |
| PCB hole drillings/ Leiterplattenbohrbild: | see sheet 2/ siehe Seite 2 |



| | | | | | |
|-------------------------|------------------------|-----------------|-------------------------|--|------------|
| | | dim. in mm | | D-SUB PI-Filter Female 25pos. with threaded rear spacer clip D-SUB PI-Filter Buchsenleiste 25pol. mit Gewinde-Abstandsbolzen-Clip | |
| | | Date/Datum | Name | | |
| | | drawn/ gez. | 07.01.2022 Lehmenkühler | | |
| | | appd./ gepr. | 07.01.2022 Fischer | | |
| Index: a Original | Scale/ Maßstab: 2:1 | | | dwg no / Z.-nr.: 24K1A2145 | DIN- A3 |
| RoHS compliant/ konform | | | | | 1 / 2 |

This reproduction, distribution and utilization of this document as well as the communication of its contents to others without express authorization is prohibited. Offenders will be held liable for the payment of damages. For further information on our legal notices, please refer to our website: www.conec.com.

PCB hole drillings
(PCB top side)
Leiterplattenbohrbild
(Leiterplatten Oberseite)



This reproduction, classification and utilization of this document as well as the communication of its contents to others without express authorization is prohibited. Offenders will be held liable for the payment of damages. We reserve every right. In particular, we reserve the right to take action against the use of any unauthorized reproduction in advertising or promotional purposes, in the press, in writing or orally.

| | | | | | |
|------------------------|-----------------------|--------------|------|---|--------|
| | | dim. in mm | | D-SUB PI-Filter Female 25pos. with threaded rear spacer clip <i>D-SUB PI-Filter Buchsenleiste 25pol. mit Gewinde-Abstandsbolzen-Clip</i> | |
| | | Date/Datum | Name | | |
| drawn/gez. | 07.01.2022 | Lehmenkühler | | | |
| appd./gepr. | 07.01.2022 | Fischer | | | |
| Index: a Original | scale/maßstab: 2:1 | CONEC | | dwg no / Z.-nr.: 24K1A2145 | DIN-A3 |
| RoHS compliant/konform | | | | | 2 / 2 |