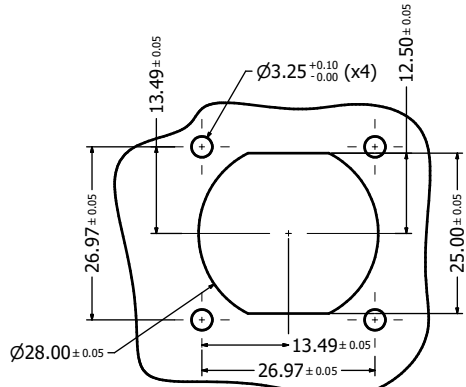
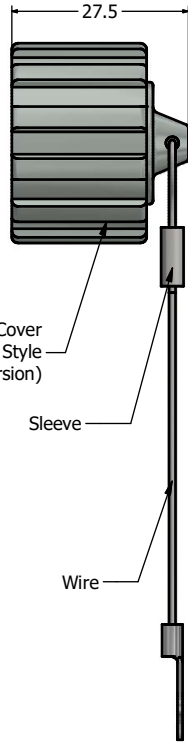
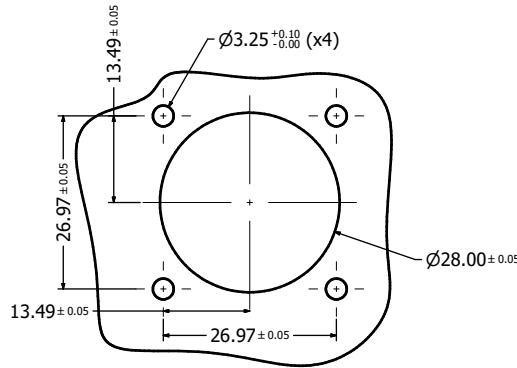


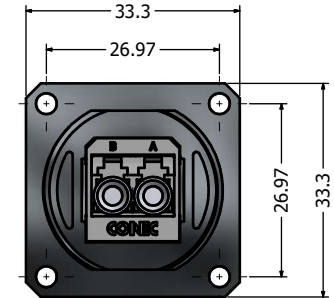
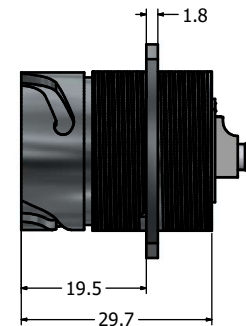
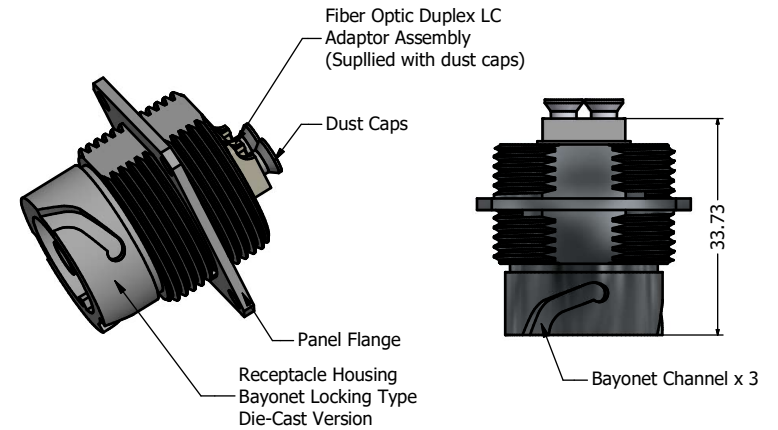
Protective Cover
Bayonet Locking Style
(Zinc Die-Cast Version)



Recommended Double-D Panel Cutout



Recommended Round Panel Cutout



Notes:

- Material and Finish:
 - Receptacle Housing + Protective Cover: Die-Cast, Nickel plated
 - Cover Gasket: Silicon, Color: White
 - Sleeve: Aluminum
 - Wire: Stainless Steel
 - Lug: Copper Alloy, Tin plated (c)
- Connector can be front or rear mounted to a maximum panel thickness of 3.2mm.
- IP67 rated when covered or fully mated with the appropriate mating connector
- The panel gasket (P/N: 17-103540) and the M3 mounting hardware (P/N: 17-103530) must be ordered separately.
- the recommended mounting torque is 8 to 10 lb-inch

(b)	Description	Part Number
	Single Mode (SM) + Cover Assembly	17-300980
	Multi Mode (MM) + Cover Assembly	17-300990
	APC Single Mode (APC SM) + Cover Assembly	17-301000

THIS DRAWING MAY NOT BE COPIED OR REPRODUCED IN ANY MANNER OR FOR ANY PURPOSE WITHOUT THE WRITTEN PERMISSION OF CONEC CORPORATION. OWNERSHIP AND COPYRIGHT OF CONEC CORPORATION.	Customer:			Tolerance Unless otherwise specified			Scale:	Dim. in mm
	Name	Title	Approval Date	0 PLC ±0.50	1 PLC ±0.38		Material: See Notes Title: IP67 Industrial Duplex LC Receptacle (with Flange) + Cover Kit Nickel Plated Zinc Die-Cast Version	
				2 PLC ±0.25	3 PLC ±0.10			
				Norm	ANGLES ±3°			
1 x c	Ä22-0101	04.04.2022	ABU	2013	Date	Name	Drawing No.: 17K1A527	
2 x b	b	Sep/25/2013	Vincent Ke	Draw.	Sept. 05	Vincent Ke	DIN A3	
a	original			Appd.	Sept. 05	J. Chaudry	Sheet 1/1	
Rev	Changes	Date	Name	Norm			Part No.: SEE PART NUMBER TABLE	

RoHS compliant

