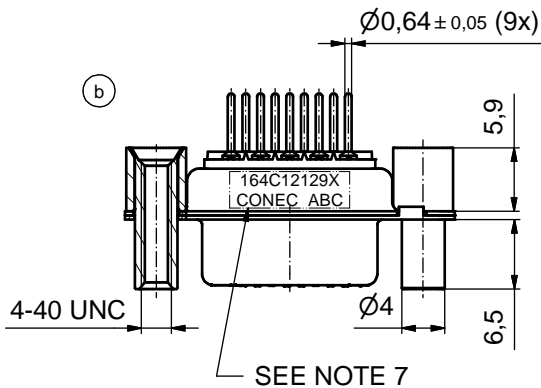
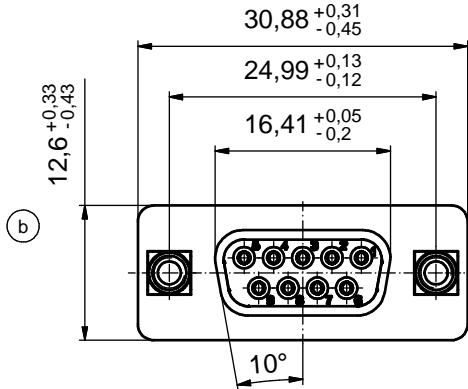
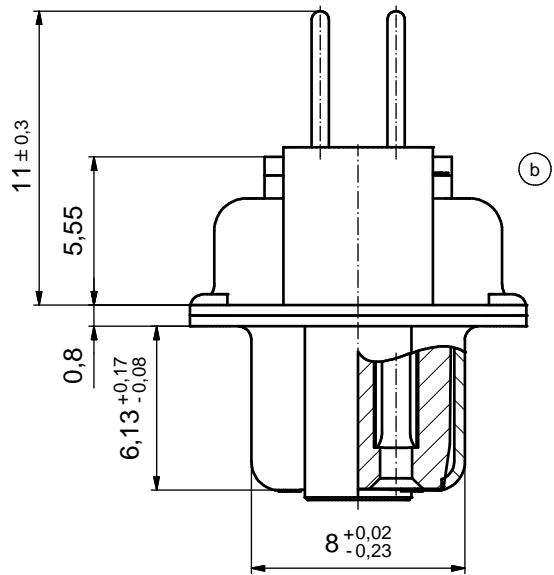
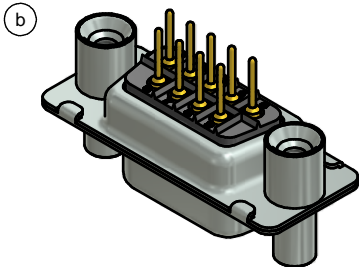
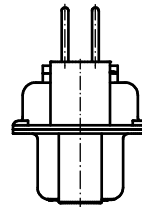


P.C.B. HOLE DRILLINGS  
(P.C.B. TOP SIDE)



SEE NOTE 7



NOTES: (b)

- METALSHELLS: STEEL; min. 315µin TIN over 40-80µin NICKEL
- INSULATORS: PBT GF UL 94 V-0, BLACK
- CONTACTS: COPPER ALLOY; PLATING (SEE PART NO):
  - PLEASE ADD A for GOLD FLASH over NICKEL ( PREFERRED TYPE)
  - PLEASE ADD B for 20µin HARD GOLD over min. 50µin NICKEL
  - PLEASE ADD C for 30µin HARD GOLD over min. 50µin NICKEL
- THREADED REAR SPACERS / FRONT THREADED LOCKS: COPPER ALLOY; min. 200µin TIN over 80µin NICKEL
- SLEEVES: COPPER ALLOY; min. 200µin TIN over 80µin NICKEL
- MAXIMUM TORQUE VALUE FOR THREAD: 6 in.LB
- CONNECTOR IS PART MARKED: 164□12129X CONEC ABC

THIS DRAWING MAY NOT BE COPIED OR REPRODUCED IN ANY WAY, AND MAY NOT BE PASSED ON TO A THIRD PARTY WITHOUT WRITTEN PERMISSION. OWNERSHIP AND COPYRIGHT OF CONEC GmbH DO NOT ALTER CAD DRAWING BY HAND	finish:			tolerance		dim. in mm	scale:		
							material: SEE NOTES		
				date	name		title: <b>D-SUB FEMALE</b> 9pos. SOLDER PIN STRAIGHT with threaded rear spacer and front threaded lock		
				drawn	19.08.2014	Heinrich			
				appd.	20.08.2014	Henneboel			
				norm				dwg no: 16K1A625	
				d-old		16K1A270A/16K1A625			
7 x b	Ä 5305	19.08.2014	Heinrich					DIN-A3	
a	Origin							sh: 1	
rev.	description	date	name			part no: (b) 164□12129X (see note 3)			