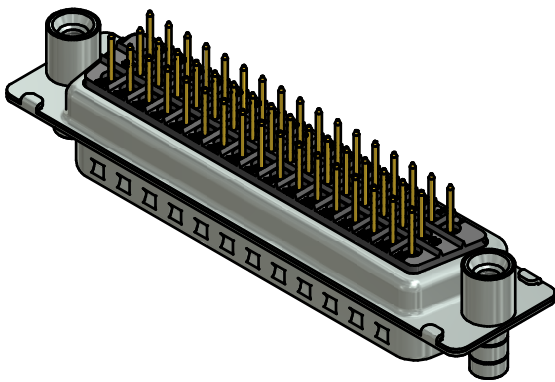
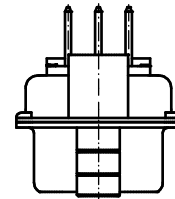
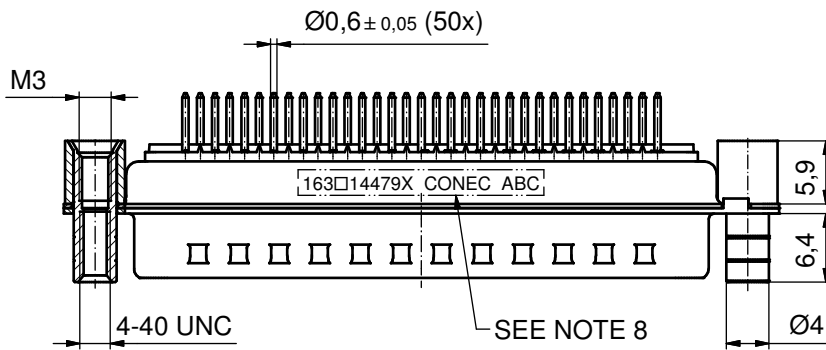
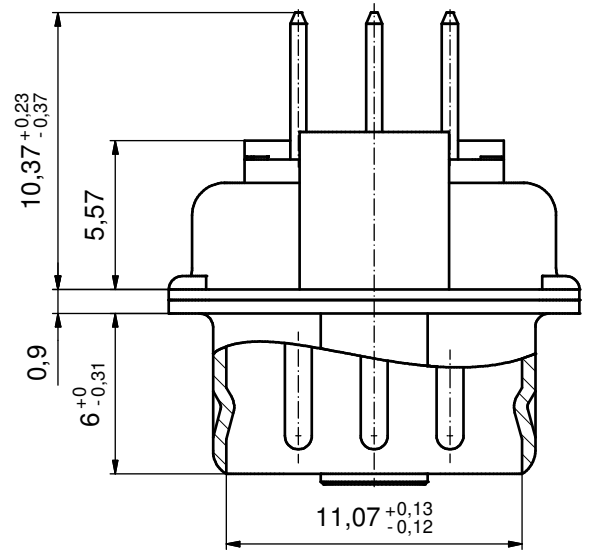
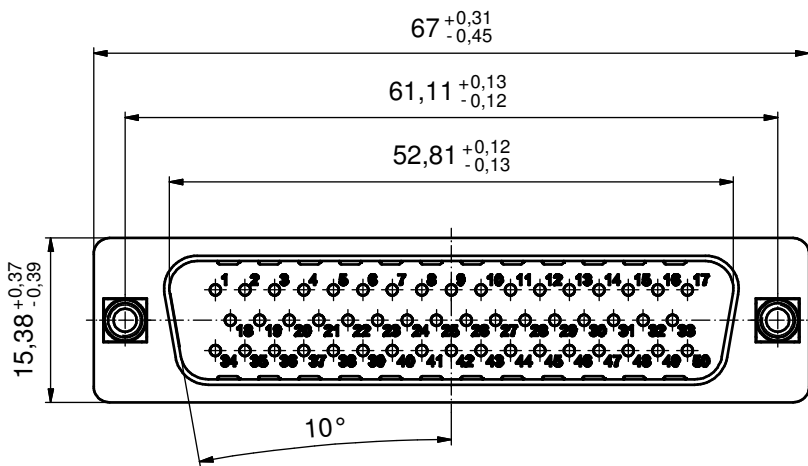


(5:1)



NOTES:

1. METALSHELLS: STEEL; min. 315µin TIN over 40-80µin NICKEL
2. INSULATORS: PBT GF UL 94 V-0, BLACK
3. CONTACTS: COPPER ALLOY, PLATING (SEE PART NO.):
  - PLEASE ADD A for GOLD FLASH over NICKEL (PREFERRED TYPE)
  - PLEASE ADD B for 20µin HARD GOLD over min. 50µin NICKEL
  - PLEASE ADD C for 30µin HARD GOLD over min. 50µin NICKEL
4. THREADED REAR SPACER/FRONT THREADED LOCKS: COPPER ALLOY; min. 200µin TIN over 80µin NICKEL
5. SLEEVES: COPPER ALLOY; min. 200µin TIN over 80µin NICKEL
6. P.C.B. HOLE DRILLINGS ON SHEET 2
7. MAXIMUM TORQUE VALUE FOR THREAD. 6in.LB
8. CONNECTOR IS PART MARKET: 163□14479X CONEC ABC

Directive 2002/95/EC RoHS compliant

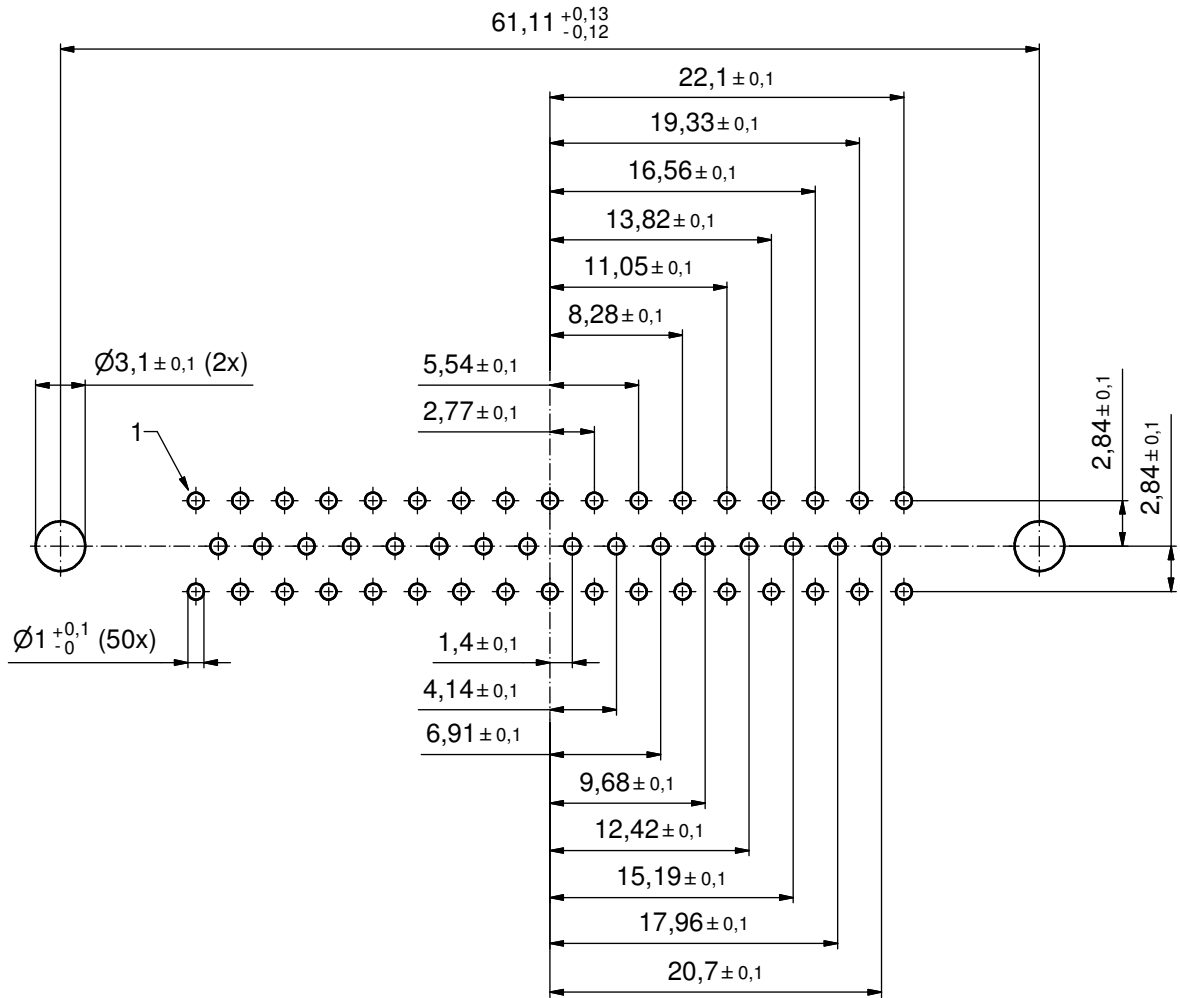
THIS DRAWING MAY NOT BE COPIED OR REPRODUCED IN ANY WAY, AND MAY NOT BE PASSED ON TO A THIRD PARTY WITHOUT WRITTEN PERMISSION.  
 OWNERSHIP AND COPYRIGHT OF CONEC GmbH  
 DO NOT ALTER CAD DRAWING BY HAND

tolerance			scale: 2:1 (5:1)	
dim. in mm			material: SEE NOTES	
drawn	19.03.13	name		title: <b>D-SUB MALE</b> 50pos. SOLDER PIN STRAIGHT with threaded rear spacer and front threaded lock dwg no: 16K1A3204 part no: 163□14479X (see note 3)
appd.	19.03.13	Fischer		
norm				
d-old				
rev.	a	Original		
description	date	name		

title:		DIN-A3
<b>D-SUB MALE</b> 50pos. SOLDER PIN STRAIGHT with threaded rear spacer and front threaded lock		
dwg no:		sh: 1/2
16K1A3204		
part no:		163□14479X (see note 3)

# P.C.B. HOLE DRILLINGS

(P.C.B. TOP SIDE)



THIS DRAWING MAY NOT BE COPIED OR REPRODUCED IN ANY WAY, AND MAY NOT BE PASSED ON TO A THIRD PARTY WITHOUT WRITTEN PERMISSION. OWNERSHIP AND COPYRIGHT OF CONEC GmbH DO NOT ALTER CAD DRAWING BY HAND				tolerance		scale: 3:1
					dim. in mm	material: SEE SHEET 1
				date	name	title: P.C.B. HOLE DRILLINGS D-SUB MALE 50pos. SOLDER PIN STRAIGHT threaded rear spacer and front threaded lock
				drawn 19.03.13	Henneboel	
				appd. 19.03.13	Fischer	
			norm		dwg no:	DIN-A3
			d-old		16K1A3204	sh: 2/2
	a	Original			part no: SEE SHEET 1	
rev.	description	date	name			